

Animal Control Stats	October 2014	September 2014	October 2013
Animal Cruelty Concern	2	1	0
Animal Removed from Vehicle, Garage or Other Property	24	22	6
Animals Released to Wild	33	19	19
Animals Released to Friends of the Animal	41	24	23
Barking Dog Complaint	0	1	0
Beached/Dead Animal (Signal 0)	20	20	15
Bees	1	5	2
Cat or Dog Returned to Owner	1	1	1
Cat on Causeway	0	2	0
Clean Up After Pets (Sec. 3-30)	13	16	11
Clean Up After Pets Complaint	1	0	1
Coyote Concern	1	0	0
Injured Animal (s)	5	5	0
Loose Canine or Cats (s)	4	13	10
Lost Canine or Cat Reported	0	3	0
Lost Canines or Cats	0	0	6
Monitor Trap Set by Code	50	34	4
Owners to Vaccinate	0	0	4
Patrol for Owners Not Cleaning Up After Pets	91	81	51
Raccoon in Dumpster/Trap	4	1	0
Scan Animal for Microchip	2	4	3
Service Animal Information/Inquiry	6	10	4
Snake Concern	10	0	2
Training for Animal Control Equipment/Animal Handling	0	1	0
Traps Issued or Returned	14	8	4
Trap Maintenance	6	5	7
Traps Set Up by Code Enforcement	23	30	5
Wildlife Investigation	0	0	2
Follow up on Animal Bite/Scratch	0	0	4
Follow up on Animal Cruelty	2	0	0
Follow up on Barking Dogs	0	1	0
Follow up on Bees	1	2	0
Follow up on Cleaning up after Pets	12	10	8
Follow Up on Injured Animal	1	1	0
Follow up on Loose Dog or Cat	0	6	9
Follow up on Loose Dog(s) or Cat(s) Complaint	0	3	0
Follow up on Lost Pet	0	2	4
Follow up on Owners to Vaccinate Pet(s)	0	0	5
Follow up on Quarantine Case	0	0	6
<b>GRAND TOTAL</b>	<b>359</b>	<b>331</b>	<b>217</b>



## Facts About Cats:

1. There are cats who have [survived](#) falls from over 32 stories (320 meters) onto concrete.
2. A group of cats is called a [clowder](#).
3. Cats have over 20 muscles that control their [ears](#).
4. When cats [grimace](#), they are usually “taste-scenting.” They have an extra organ that, with some breathing control, allows the cats to taste-sense the air.
5. [Evidence](#) suggests domesticated cats have been around since 3600 B.C., 2,000 years before Egypt’s pharaohs.
6. A cat’s [purr](#) may be a form of self-healing, as it can be a sign of nervousness as well as contentment.



www.buzzfeed.com

# Recycling Stats October 2014

**Aluminum 101:** Lightweight, durable and infinitely recyclable, aluminum has become an essential element of daily life. As the sustainable material of choice, its applications span from everyday items like fuel-efficient vehicles, smart phones, zippers and foil to wiring the nation's power grid, the apex of the Washington Monument and housing the International Space Station. - See more at:

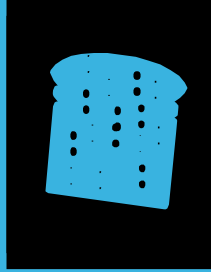
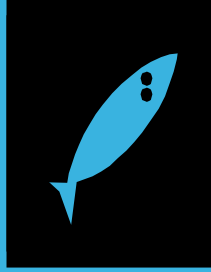
<http://www.aluminum.org/aluminum-advantage/aluminum-101#sthash.X2hXPSyj.KOlPQTDm.dpuf>

# Represents Pounds Recycled of each product	October 2014	September 2014
Cardboard	1905	1791
Plastic	915	891
Paper	985	1080
Tin	31	39
Aluminum	89	93
Totals :	3925	3894



# ENVIRONMENTAL HEALTH SERVICES DEPARTMENT

HEALTH STATS  
OCTOBER 2014





### **Most Common Foodborne Pathogens**

**According to a 2011 Centers for Disease Control and Prevention (CDC) report, approximately 48 million Americans get sick, 128,000 are hospitalized and 3,000 die each year from food poisoning, also known as foodborne illness.**

**Bacteria are the source of many food poisoning cases, usually due to improper food handling. Some bacteria, in small amounts, are not harmful to most healthy adults because the human body is equipped to fight them off. However, the trouble begins when certain bacteria and other harmful pathogens multiply and spread, which can happen when food is mishandled or not cooked or cooled properly. Foods that are contaminated may not look, taste or smell any different from foods that are safe to eat. Symptoms of food poisoning can vary and develop as quickly as thirty minutes to a few hours or take longer (up to several days) after eating food that's been infected.**

**As identified by the CDC, eight known pathogens (bacteria, viruses and parasites that cause disease) account for the vast majority of foodborne illness, hospitalization and death in the United States:**

**Salmonella**

**Clostridium perfringens**

**Campylobacter**

**Staphylococcus aureus**

**E. coli O157:H7**

**Listeria monocytogenes**

**Norovirus**

**Toxoplasma gondii**

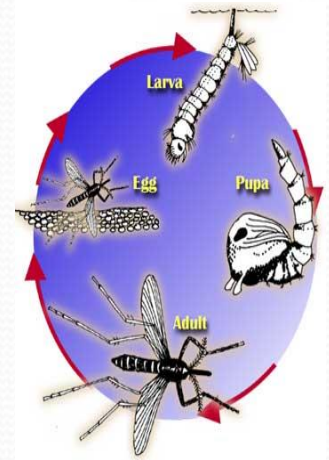
**<http://homefoodsafety.org/food-poisoning/foodborne-pathogens>**

<b>Code Enforcement Stats</b>	<b>October 2014</b>	<b>September 2014</b>	<b>October 2013</b>
Beach Patrol Section C TIME'S X HOURS/ MIN.	10 x 9 hrs. 45 min	19 x 16.25 hrs.	6 x 1hr 6 min
BFI Bundle/Brush Locations (Sec. 9-17)	16	20	6
Concern citizens/Ordinance Info. (Code 5)	282	202	204
Containers Required Sanitation (Sec. 9-13D)	0	9	0
Damaged Dumpster (Sec. 9-13B)	0	2	1
Debris/Misc. on Roadway Removed	11	18	13
Effluent Discharge (Sec. 10-1)	5	3	4
Enclosures Proper/Screened (Sec. 9-13(B)(5))	4	2	2
Glass on Beach (Sec. 12-7)	3	7	0
Graffiti (Sec. 12-21)	1	4	3
Hotel Room Inspection (Sec. 341.066)	1	3	3
Littering Prohibited (Sec. 9-3)	2	8	2
Maintenance of Signs (Sec.15-11 B,C) (15-2)	4	3	2
Monitor for Camping (Sec. 12-3)	0	0	4
Monitor Noises - Loud, Disturbing, etc. Prohibited (Code 11 Sec. 12-2)	0	0	2
Monitor Overfilled Dumpster	18	1	0
Outdoor Displays (Sec. 13-15)	0	1	1
Overfilled Dumpster	2	0	0
Overgrown weeds on commercial property(Sec.4-56)	4	10	10
Owners to maintain clean premises (Sec.9-12)	7	19	12
Patrol by (Code 11)	0	1	1
Permit for Sign/Banner (Sec. 15-3)	5	0	3
Permits and Approvals Required – Dunes (Sec. 22-7)	1	0	0
Premises Identification (4-64)	1	0	0
Prohibited Banner/Sign (Sec. 15-5)	0	2	3
Prohibition of Shade Devices & Chairs on the Public Beach (13-24)	0	6	0
Recreational Vehicles/Mobile Equip. (Sec. 20-11C)	3	1	2
Required Signs (Sec. 15-2)	7	0	0
Sign Standards (Sec. 15-17)	0	0	7
Slow Speed/Minimum Wake Required of all Watercrafts (Sec. 12-15)	0	1	0
Stagnant Water (Sec. 9-4)	7	21	2
Survey on Natural Habitat	10	56	3
Vehicle on the Beach (Sec. 18-4)	1	1	0
Water Leak	1	0	0
Weedy Lots (Sec. 9-6)	157	293	90
Weedy Lot Letters	137	237	66
<b>Follow ups:</b>			
Follow up on Address	3	0	0
Follow up on Banners/Signs/Required Signs (Ch. 15)	2	1	66
Follow up on Brush and Debris (Sec. 9-12.1)	11	16	6
Follow up on Damage Dumpster (Sec 9-13B)	0	3	1
Follow up on Dumpsters Required (Sec. 9-13)	0	7	0
Follow up on Effluent Discharge/Stagnant (Sec. 10-1)	8	2	4
Follow up on Enclosures	3	0	2
Follow up on Hotel Rooms	1	1	0
Follow up on Littering (Sec 9-3)	2	0	2
Follow up on Noise (Sec. 12-2)	0	0	2
Follow up on Overfilled Dumpsters	1	0	0
Follow up on Property Cleanup (Sec. 9-12)	14	11	11
Follow up on Shade Device Ordinances	0	0	0
Follow up on Stagnant Water (Sec. 10-1)	6	3	4
Follow up on Water Leak	1	1	0
Follow up on Weedy Lot/Business with Weedy Lot (Sec. 9-6 & Sec. 4-56)	1	219	158
<b>Total for Follow-Ups</b>	<b>161</b>	<b>264</b>	<b>257</b>
<b>Calls for Service</b>	<b>830</b>	<b>1196</b>	<b>706</b>
<b>NOTICE OF COMPLY ISSUED</b>	<b>15</b>	<b>31</b>	<b>16</b>
<b>WARNINGS ISSUED</b>	<b>4</b>	<b>5</b>	<b>3</b>
<b>CITATIONS ISSUED</b>	<b>0</b>	<b>3</b>	<b>4</b>



# Mosquito Management Stats

## October 2014



# Represents Amount of Times Performed	October 2014	September 2014	October 2013
Altosid/BTI (larviciding)	143	199	71
Adulticide Spraying hrs	28	36	13
Scheduled for Adulticide	62	60	62
Landing Rate Counts	9	4	41
Mosquito concerns	1	8	8
Work done in chemical room	6	8	3
<b>Totals :</b>	<b>249</b>	<b>311</b>	<b>270</b>

### Mosquito Fast Facts

1. In the interest of science, Arctic researchers uncovered their chests, arms, and legs and reported as many as 9000 mosquito bites per person, per minute. At this rate, and unprotected human would lose one half of his blood supply in approximately 2 hours.
2. Some people are more attractive to mosquitoes than others. It is not clear why, but probably has something to do with the 300 odd chemicals produced by the skin.
3. A mosquito can smell the carbon dioxide you exhale from about 60 to 75 feet away.
4. Most mosquitoes do not fly very far from their larval habitat, but the salt marsh mosquito migrates 75 to 100 miles over the course of its life.

[http://www.fightthebitecolorado.com/top\\_ten\\_facts.pdf](http://www.fightthebitecolorado.com/top_ten_facts.pdf)