

Animal Control Stats	April 2013	April 2012	March 2013
Animal Bite / Scratch	0	0	2
Animal Cruelty Concern	0	2	1
Animals Placed in Quarantine	0	0	2
Animals Released to Wild	29	14	11
ANIMALS RELEASED TO FRIEND OF THE ANIMAL/SEALIFE CENTER	35	35	30
Beached/Dead Animal (Signal 0)	8	22	6
Cat or Dog Returned to Owner	6	2	6
Clean Up After Pets	2	5	1
Coyote Concern(s)	0	1	0
Injured Animal (s)	7	7	6
Loose Canine or Cats (s)	17	0	16
Loose Dog or Cat Complaints	0	2	0
Lost Dog or Cat Reported	6	0	7
Owners to Vaccinate	3	1	0
Patrol for Owners Not Cleaning Up After Pets	67	164	144
Removed from Vehicle, Garage/Other	14	1	11
Scan Animal for Microchip	2	1	3
Snake Concern	2	2	1
Training for Animal Control Equipment	2	1	0
Traps Issued or Returned	10	5	7
Trap Maintenance	5	20	0
Traps Set Up by Code Enforcement	8	6	5
Unlawful Restraint of Dog(s)	1	1	0
Welfare Concern	5	1	1
Follow up on Animal Bites / Scratch	0	2	1
Follow up on Animal Cruelty	2	0	10
Follow up on Barking Dog(s)	3	1	1
Follow up on Cleaning up after Pets	3	1	1
Follow up on Loose Dog or Cat	6	4	5
Follow up on Loose Dog(s) or Cat(s) Complaint	1	4	5
Follow up on Lost Dog / Cat Reported	5	1	6
Follow up on Owners to Vaccinate Pet(s)	6	2	2
Follow up on Quarantine Case	5	6	4
Follow up on Welfare Concern	5	0	0
TOTALS	265	312	295



Snakes have become more active lately. How can you deter them from your yard?

Instructions

1

Develop a barrier around your yard to exclude snakes. A 1/4-inch wire mesh built at 3 feet high and buried to at least 4 inches beneath the ground will help.

2

Enclose the wire mesh with aluminum flashing. The flashing should wrap around the outside of the mesh, along the bottom of the fencing. Bury the flashing at least 4 inches beneath the ground. The brightness of the aluminum will deter snakes.

3

Remove a snake's source of food. If you have a rodent problem, killing the rodents will eliminate the chance of snakes being introduced to your yard. Place mouse traps around populated mouse areas. Ensure that you throw out the traps immediately after catching a mouse.

4

Maintain your yard and get rid of debris that could become a potential habitat for snakes. Mowing your yard, removing logs laying against your home and trimming your shrubs will discourage snakes.

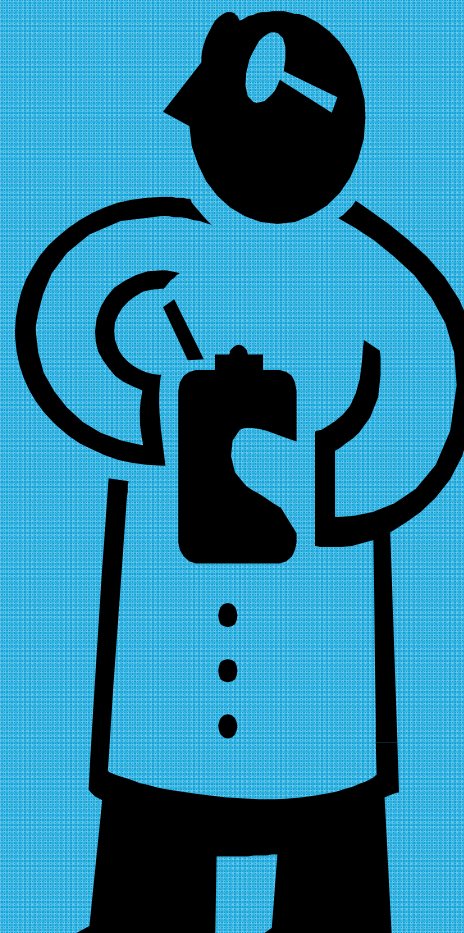
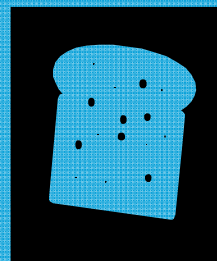
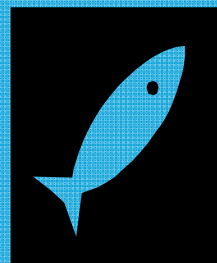
5


Inspect your home for cracks. According to the Minnesota Department of Health, snakes can slip through a 1/2-inch wide crack. Using expandable caulk can seal any potential entry points into your home.

Read more: [How to Deter Snakes | eHow.com](http://www.ehow.com/how_8517724_deter-snakes.html#ixzz2SBYruDpZ)
http://www.ehow.com/how_8517724_deter-snakes.html#ixzz2SBYruDpZ

ENVIRONMENTAL HEALTH SERVICES DEPARTMENT

HEALTH STATS
APRIL 2013



PERMIT #	ESTABLISHMENT	ADDRESS	PERMIT FEE	Re-Inspection/Score
5787	Origin's Recovery	4610 Padre Blvd	\$100.00	89
5816	Parrot Eyes	5801 Padre Blvd.	Field Investigation	92
5823	Jake's Bar & Restaurant	2500 Padre Blvd.	\$100.00	88
5830	Senor Donkey	4215 Padre Blvd.	\$100.00	94
5832	Ceda Chocolate	8605 Padre Blvd.	Farmer Market	100
5833	Araceli Sanchez	8605 Padre Blvd.	Farmer Market	100
5835	Farmer Mac's Kettle Corn	7355 Padre Blvd.	\$100.00	Temp
5836	Mini-Donuts	7355 Padre Blvd.	\$30.00	Temp
5837	RMC Funnel Cakes	7355 Padre Blvd.	\$30.00	Temp
5838	Round Up BBQ	7355 Padre Blvd.	\$30.00	Temp
5839	Scoops Homemade Ice Cream	7355 Padre Blvd.	\$30.00	Temp
5840	Dave's BBQ	7355 Padre Blvd.	\$30.00	Temp
5841	Rosie Ibarra	7355 Padre Blvd.	\$30.00	Temp
5842	Gracie's Goodies	7355 Padre Blvd.	\$30.00	Temp
5843	Lightning Softball	7355 Padre Blvd.	\$30.00	Temp
5844	M & B Firehouse Catering	7355 Padre Blvd.	\$30.00	Temp
5845	Biggz Jerky	7355 Padre Blvd.	\$30.00	Temp
5849	Grandpa's Bar-B-Q	7355 Padre Blvd.	\$30.00	Temp
5856	B-Rey's BBQ & Catering	6900 Padre Blvd.	\$10.00	Temp
5787	Origin's Recovery	4610 Padre Blvd	\$0.00	Compliance
5816	Parrot Eyes	5801 Padre Blvd.	\$0.00	Compliance
5823	Jake's Bar & Restaurant	2500 Padre Blvd.	\$0.00	Compliance
5830	Senor Donkey	4215 Padre Blvd.	\$0.00	Compliance
	Total Compliance	4	\$0.00	
	Field Investigations	1	\$0.00	
	Farmer's Market Permits	2	\$0.00	
	Total Temporary Inspections	13	\$440.00	
	Total Establishment Permits (annual)	3	\$300.00	
	Total Health Inspections	23	\$740.00	

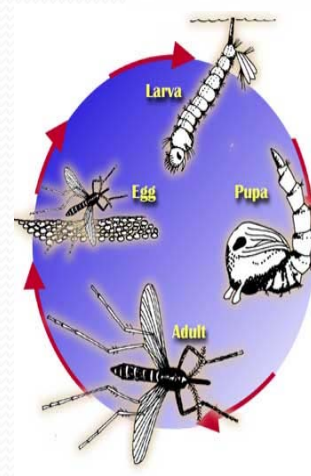
130°F is a temperature value at which vegetative forms of pathogenic bacteria are killed in a few hours. (Procedures to Investigate Foodborne Illness, Sixth Edition, 2011)

Mosquito Management Stats

April 2013



# Represents Amount of Times Performed	April 2013	March 2013	April 2012
Altosid/BTI (larviciding)	11	15	0
Adulticide Spraying hrs	0	0	0
Scheduled for Adulticide	60	62	60
Landing Rate Counts	15	0	0
Larval Counts	0	0	3
Mosquito concerns	0	0	2
Training for Spraying	0	1 hr	2
Work done in Chemical room	0	2 hrs	3 x 2.5 hours
Totals :	86	80	70



Mosquito Fast Facts

1. In the interest of science, Arctic researchers uncovered their chests, arms, and legs and reported as many as 9000 mosquito bites per person, per minute. At this rate, and unprotected human would lose one half of his blood supply in approximately 2 hours.
2. Some people are more attractive to mosquitoes than others. It is not clear why, but probably has something to do with the 300 odd chemicals produced by the skin.
3. A mosquito can smell the carbon dioxide you exhale from about 60 to 75 feet away.
4. Most mosquitoes do not fly very far from their larval habitat, but the salt marsh mosquito migrates 75 to 100 miles over the course of its life.

http://www.fightthebitecolorado.com/top_ten_facts.pdf



City of South Padre Island

Code Enforcement Stats

April 2013

	Apr-13	Mar-13	Apr-12
Beach Patrol Section C TIME'S X HOURS/ MIN.	10x 6hr 20min	127 x 257hr 10min	44 x 76.5 hrs
BFI Bundle/Brush Locations (Sec. 9-17)	13	18	30
Concern citizens/Ordinance Info. (Code 5)	301	640	378
Containers Required (Sec 9-13)	1	3	14
Debris/Misc. on Roadway Removed	101	73	181
Effluent Discharge (Sec. 10-1)	10	7	9
Enclosures Proper/Screened (Sec. 9-13(B)(5))	3	4	8
Glass on Beach (Sec. 12-7)	0	94	57
Graffiti (4-61)	0	9	2
Hotel Room Inspection (341.066)	1	0	0
Littering Prohibited (Sec. 9-3)	33	35	2
Maintenance of Signs (Sec. 15-11(B,C)) (15-2)	1	18	21
Noises--Loud, disturbing, etc. prohibited (Sec.12-2)	0	59	18
Overfilled Dumpsters (9-12a)	1	98	49
Overgrown weeds on commercial property(Sec.4-56)	5	4	1
Owners to maintain clean premises (Sec.9-12)	11	85	42
Patrol by (Code 11)	0	113	17
Permit Req. for work within right of ways (16-1)	0	0	2
Permit Req. on Signs (Sec. 15-3)	6	25	22
Premises Identification (4-64)	17	7	0
Prohibited Banner/Sign (Sec. 15-5)	9	21	5
Sign Standards (Sec. 15-7)	4	8	7
Stagnant Water (Sec.9-4)	2	2	2
Street Light Survey	8	17	0
Survey on Natural Habitat	26	27	17
Weedy Lots (Sec. 9-6)	31	69	70
Follow up on Accessory Structure (Sec. 4-59)	0	1	0
Follow up on Addresses	3	12	5
Follow up on Banners/Signs/Required Signs	48	55	37
Follow up on brush and debris	29	12	29
Follow up on Container Required (9-13A)	3	3	0
Follow up on damage dumpster (Sec 9-13B)	0	2	8
Follow up on dumpsters required	3	2	0
Follow up on Hotel Room Inspection (341.066)	1	0	0
Follow up on Effluent Discharge/Stagnant	7	2	8
Follow up on Enclosures	3	2	6
Follow up on Littering (sec 9-3)	27	1	0
Follow up on Noise (Sec. 12-2)	0	60	2
Follow up on Outdoor Display	1	1	0
Follow up on Overfilled dumpsters	1	81	28
Follow up on Property Cleanup	21	133	27

Follow up on Recreational Vehicles	0	3	2
Follow up on Regulation of Lighting	0	0	17
Follow up on Shade Device Ordinance	2	1	1
Follow up on Soliciting	0	1	0
Follow up on Stagnant Water	3	2	6
Follow up on Temporary Structure	0	1	1
Follow up on trash service required (9-13)	0	0	2
Follow up on Water Leak	3	0	1
Follow up on Weedy Lot/Weedy Businesses	65	70	101
Follow up on Window Signs (15-2{72})	0	18	57
Total for Follow-Ups	220	462	338
CALLS FOR SERVICE	804	1881	1235
NOTICE OF COMPLY ISSUED	29	44	26
WARNINGS ISSUED	3	18	37
CITATIONS ISSUED	2	13	5

Recycling Stats April 2013

How Tires Get Recycled

Tire waste is a mounting problem and states have taken action to give consumers options for the proper disposal and recycling of tires.

Many municipalities have tire “amnesty” days where residents can bring a limited number of tires without charge for proper disposal. Additionally, some tire retailers and manufacturers offer take-back programs where customers have the opportunity to return used tires. You can search for local retailers and drop-off points in your area using Earth911’s recycling locator.

Rubber is difficult to recycle due to the procedure known as “vulcanization,” which it undergoes to attain its springy, flexible nature. Vulcanization is a curing process that involves adding sulfur to rubber, which creates stronger bonds between the rubber polymers. Due to the vulcanization method, tires are difficult to melt for reuse and are therefore typically broken down by a mechanical process.

Initially, whole tires are shred into strips using rugged machines. The shredded material is then placed in grinding machines that use rotors to further shred the material and remove the steel fibers from the tire. Some processors also use powerful magnets to further draw metal from the rubber.

Once the bulk of the steel is removed, the strips are placed into granulators. Depending on the consistency desired by the end user of the shredded tires, the rubber can be milled into assorted sizes of granules that are useful in a number of industries.

New products include: playground covers, flooring, rubberized asphalt, highway barriers, sandals, handbags, patio furniture, patio decks, roofing tiles, and bio-fuel.

Courtesy of www.tire-rec.com

# Represents Pounds Recycled of each product	April 2013	March 2013
Cardboard	1,908	2,133
Plastic	1,047	1,178
Paper	3,487	920
Office Waste	(Included in Paper)	3,157
Tin	157	223
Aluminum	154	307
Totals :	6,753	7,918

