

Animal Control Stats	February 2013	February 2012	January 2013
Animal Bite / Scratch	1	4	1
Animal Cruelty Concern	1	0	1
Animals Released to Wild	7	0	7
ANIMALS RELEASED TO FRIEND OF THE ANIMAL/SEALIFE CENTER	17	51	17
Barking Dog Violation (Citation Issued)	0	3	0
Beached/Dead Animal (Signal 0)	23	90	23
Bee Calls	0	1	0
Cat or Dog Returned to Owner	7	4	7
Follow up on Animal Bites / Scratch	4	5	4
Follow up on Cleaning up after pets	0	5	0
Follow up on Loose Dog or Cat	0	1	0
Injured Animal	8	8	8
Loose Canines Or Cats	15	22	15
Lost Dog / Cat Reported	2	0	2
Owners to Vaccinate Dogs	0	1	0
Scan Animal for Microchip	1	0	1
Traps Issued or Returned	2	6	2
Traps Set Up by Code Enforcement	3	0	3
Welfare Concern	3	2	3
TOTALS	94	289	94



## Chick, Bunnies & Salmonella

Many families will be celebrating Easter in a few weeks. Along with the cute chicks, furry bunnies and colored Easter eggs comes another important but not-so-cute topic to think about: *Salmonella*.

*Salmonella* are bacteria that can cause gastrointestinal illness.

There are many species and serotypes of *Salmonella*, and animals and raw eggs can be sources for many of them.

Typical symptoms of *Salmonella* infection include fever, headache, malaise, abdominal pain, nausea, and diarrhea.

A Spring tradition is giving chicks, ducklings and bunnies to children as gifts. Chicks, ducklings and other animals can be a source of *Salmonella*, and very young children should not be allowed to handle them. *Salmonella* can cause serious illness in young children, pregnant women, the elderly, and people with weakened immune systems. It is very important that people wash their hands with soap and warm water immediately after handling animals to prevent the spread of bacteria. Chicks and ducklings that are carrying *Salmonella* do not usually become ill from the bacteria.

Unfortunately, many of these gift animals end up at shelters or die from inadequate care. Parents should always be consulted before giving a child a live animal. They require proper feeding, care and veterinary services, and the parents must be willing to assume the responsibility if the child doesn't. Chicks, bunnies and ducklings mature quickly into adult animals. Rabbits should be neutered if they are going to be kept as pets. This will prevent any unnecessary breeding and unwanted bunnies. Additionally, many cities have ordinances prohibiting poultry or limiting the number and types of pets.

More information and materials about *Salmonella*, including a poster on hand washing and a template for printable stickers, are available at [www.cdc.gov/healthypets/easter\\_chicks.htm](http://www.cdc.gov/healthypets/easter_chicks.htm) and [www.cdc.gov/features/SalmonellabyBirds/](http://www.cdc.gov/features/SalmonellabyBirds/).

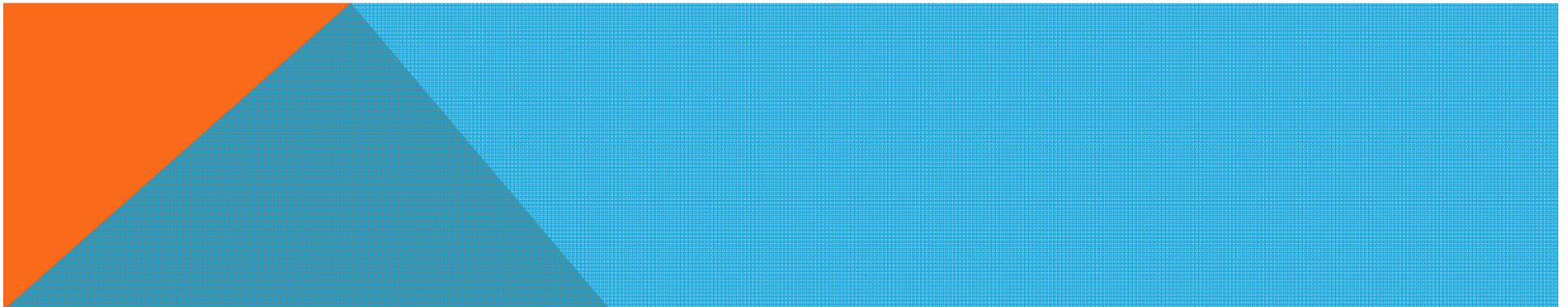
# ENVIRONMENTAL HEALTH SERVICES DEPARTMENT

HEALTH STATS  
FEBRUARY 2013

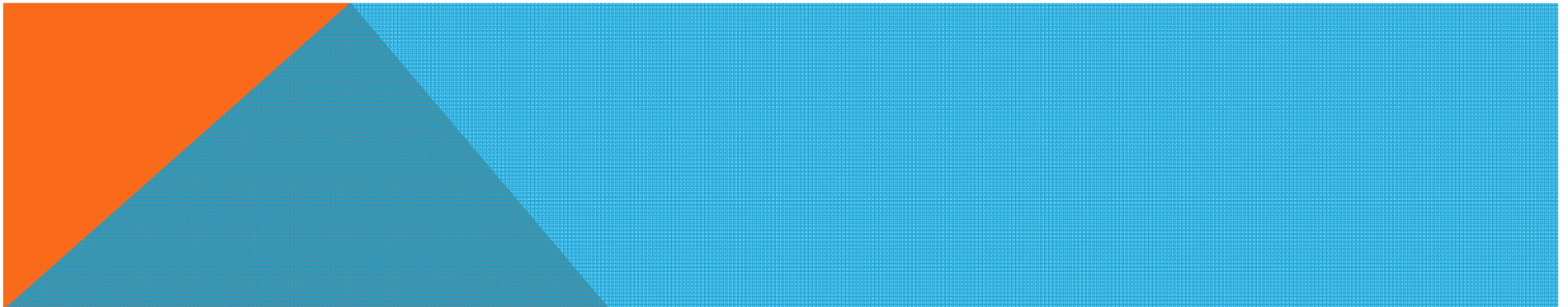





PERMIT #	ESTABLISHMENT	ADDRESS	PERMIT FEE	Re-Inspection/Score
5706	Anita's Gourmet	8605 Padre Blvd.	Farmer's Market	Temp
5734	Two Pines Farm	8605 Padre Blvd.	Farmer's Market	Temp
5751	Cap'n Roy's	1313 Padre Blvd	Field Investigation	100
5757	Alaniz Produce	8605 Padre Blvd.	Farmer's Market	Temp
5759	Laura's Grapefruits	8605 Padre Blvd.	Farmer's Market	Temp
5760	Rita Bender & Valerie Larson	2305 Laguna Blvd	Chili Cookoff	Temp
5761	Frank Shisler	2305 Laguna Blvd	Chili Cookoff	Temp
5762	Deborah Meeks	2305 Laguna Blvd	Chili Cookoff	Temp
5763	Douglas Amstutz	2305 Laguna Blvd	Chili Cookoff	Temp
5764	Walter Conrad	2305 Laguna Blvd	Chili Cookoff	Temp
5765	Darla A. Jones	2305 Laguna Blvd	Chili Cookoff	Temp
5766	Sabrina Miranda	2305 Laguna Blvd	Chili Cookoff	Temp
5767	Edward Mathers	2305 Laguna Blvd	Chili Cookoff	Temp
5768	Maria D. Garza	2305 Laguna Blvd	Chili Cookoff	Temp
5769	Miranda Arredondo	2305 Laguna Blvd	Chili Cookoff	Temp
5770	Kitty Van Holsbeke & Dylan T. Santiso	2305 Laguna Blvd	Chili Cookoff	Temp
5771	John Reed	2305 Laguna Blvd	Chili Cookoff	Temp
5772	Robin Norris	2305 Laguna Blvd	Chili Cookoff	Temp
5773	Teresa Mayo	2305 Laguna Blvd	Chili Cookoff	Temp
5774	Colleen Gerlock	2305 Laguna Blvd	Chili Cookoff	Temp
5775	David Eymard	2305 Laguna Blvd	Chili Cookoff	Temp
5776	John J. Elliff & Christy Carrasco	2305 Laguna Blvd	Chili Cookoff	Temp
5777	Emily Fox	2305 Laguna Blvd	Chili Cookoff	Temp
5778	Roger Harstad	2305 Laguna Blvd	Chili Cookoff	Temp
5779	Carlos Torres Jr.	2305 Laguna Blvd	Chili Cookoff	Temp



5780	Elizabeth Mauro	8605 Padre Blvd.	Farmer's Market	Temp
5781	House Of David	8605 Padre Blvd.	Farmer's Market	Temp
5783	Isla Grand (Quarterdeck)	500 Padre Blvd	\$100.00	97
5784	Isla Grand (Windjammers)	500 Padre Blvd	\$100.00	90
5785	Louie's Backyard	2305 Laguna Blvd	\$100.00	100
5786	Valley Pecan	8605 Padre Blvd	Farmer's Market	Temp
5788	Island Inn	3813 Padre Blvd	\$100.00	100
5789	Blue Bay Inn	901 Padre Blvd	\$100.00	100
5790	Pizza Hut	1905 Padre Blvd.	\$100.00	100
5791	World's Best Beef Jerky	7355 Padre Blvd.	\$30.00	Temp
5792	El Rey Del Elote	7355 Padre Blvd.	\$20.00	Temp
5796	Outlaws Kettle Corn	7355 Padre Blvd.	\$30.00	Temp
5797	Royal Prestige	7355 Padre Blvd.	\$30.00	Temp
5798	Old Homestead Candies	7355 Padre Blvd.	\$30.00	Temp
5799	Gloria Anderson	7355 Padre Blvd.	\$30.00	Temp
5800	Jensu's	7355 Padre Blvd.	\$30.00	Temp
5801	Technology 2000 Unlimited	7355 Padre Blvd.	\$30.00	Temp
5802	Serendipity of the Valley	7355 Padre Blvd.	\$30.00	Temp
5803	Gaga's Gourmet	7355 Padre Blvd.	\$30.00	Temp
5804	Dolce Roma	4200 Padre Blvd.	\$100.00	97
5805	Dolce Roma	904 Padre Blvd.	\$100.00	97
5806	Ben's Liquor	3000 Padre Blvd.	\$100.00	100
5807	Ben's Liquor	5912 Padre Blvd	\$100.00	100
5808	CVS	1500 Padre Blvd	\$100.00	92



5810	Margarita Mania and Party Rentals	7355 Padre Blvd.	\$20.00	Temp
5811	Ruby Elotes	7355 Padre Blvd.	\$20.00	Temp
5812	Marco's Tacos	7355 Padre Blvd.	\$20.00	Temp
5813	El Mexi Dog	7355 Padre Blvd.	\$20.00	Temp
5814	Hawaiian Shaved Ice	7355 Padre Blvd.	\$20.00	Temp
5815	Margarita Mania and Party Rentals	7355 Padre Blvd.	\$20.00	Temp
5783	Isla Grand (Quarterdeck)	500 Padre Blvd	\$0.00	Compliance
5784	Isla Grand (Windjammers)	500 Padre Blvd	\$0.00	Compliance
5804	Dolce Roma	4200 Padre Blvd.	\$0.00	Compliance
5805	Dolce Roma	904 Padre Blvd.	\$0.00	Compliance
5808	CVS	1500 Padre Blvd	\$0.00	Compliance
	<b>Total Compliance</b>	<b>5</b>	<b>\$0.00</b>	
	<b>Field Investigations</b>	<b>1</b>	<b>\$0.00</b>	
	<b>Farmer's Market Permits</b>	<b>7</b>	<b>\$0.00</b>	
	<b>Total Temporary Inspections</b>	<b>36</b>	<b>\$410.00</b>	
	<b>Total Establishment Permits (annual)</b>	<b>11</b>	<b>\$1,100.00</b>	
	<b>Total Health Inspections</b>	<b>60</b>	<b>\$1,510.00</b>	

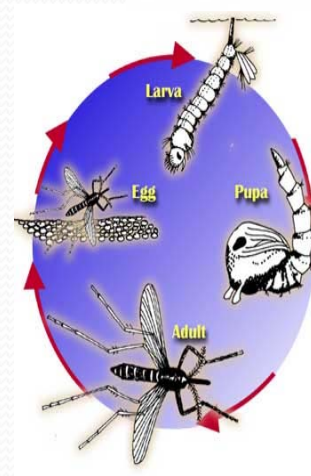
Foodhandlers must wash their hands after touching their hair, face, or body and they must also take off their aprons after prepping food and before using the restroom.

# Mosquito Management Stats

## February 2013



# Represents Amount of Times Performed	February 2013	January 2013	February 2012
Altosid/BTI (larviciding)	7	35	0
Adulticide Spraying	5	3	3
Scheduled for Adulticide	56	62	58
Landing Rate Counts	39	5	0
Mosquito concerns	1	3	5
Training for Spraying	2 hrs	0	0
Work done in Chemical room	3 x 2.5 hr.	2 x 1hr.	3 x 1.5 hr.
Totals :	111	110	69



### Mosquito Fast Facts

- There are more than 3,000 species of mosquitoes.
- A mosquito weighs 2.5 milligrams (0.0025 grams).
- A mosquito flies at a speed of 1 to 1.5 mph.
- Mosquitoes live up to 6 months.
- A mosquito beats its wings 300-600 times per second making the mosquito buzz sound.
- A mosquito has 47 teeth.

Copyright © 2009  
BestFunFacts.com | All  
Rights Reserved





# City of South Padre Island

## Code Enforcement Stats

### February 2013

	<i>Feb-13</i>	<i>Jan-13</i>	<i>Feb-12</i>
Beach Patrol Section C TIME'S X HOURS/ MIN.	1 X 1HR	0	2 x 1.25 hrs
BFI Bundle/Brush Locations (Sec. 9-17)	19	31	16
Concern citizens/Ordinance Info. (Code 5)	304	191	307
Containers Required (Sec 9-13)	1	1	1
Debris/Misc. on Roadway Removed	38	37	130
Effluent Discharge (Sec. 10-1)	5	2	0
Enclosures Proper/Screened (Sec. 9-13(B)(5))	3	2	117
Littering Prohibited (Sec. 9-3)	6	0	1
Maintenance of Signs (Sec. 15-11(B,C)) (15-2)	1	2	1
Noises--Loud, disturbing, etc. prohibited (Sec.12-2)	0	2	2
Overfilled Dumpsters (9-12a)	0	1	2
Overgrown weeds on commercial property(Sec.4-56)	3	0	0
Owners to maintain clean premises (Sec.9-12)	6	2	6
Patrol by (Code 11)	3	2	0
Permit Req. for work within right of ways (16-1)	1	0	2
Permit Req. on Signs (Sec. 15-3)	11	15	8
Premises Identification	8	0	1
Prohibited Banner/Sign (Sec. 15-5)	37	3	1
Sign Standards (Sec. 15-7)	6	6	0
Stagnant Water (Sec.9-4)	0	0	2
Street Light Survey	12	0	24
Survey on Natural Habitat	20	10	0
Weedy Lots (Sec. 9-6)	40	1	86
Follow up on Addresses	4	0	0
Follow up on Banners/Signs/Required Signs	31	11	7
Follow up on brush and debris	22	16	0
Follow up on Container Required (9-13A)	4	0	0
Follow up on damage dumpster (Sec 9-13B)	1	5	0
Follow up on dumpsters required	4	0	0
Follow up on Hotel Room Inspection (341.066)	1	0	0
Follow up on Effluent Discharge/Stagnant	5	1	0
Follow up on Enclosures	1	2	5
Follow up on littering (sec 9-3)	1	2	1
Follow up on Noise (Sec. 12-2)	0	0	5
Follow up on Overfilled dumpsters	0	1	0
Follow up on property cleanup	5	2	3
Follow up on premises identification	0	0	1
Follow up on required signs (Sec 15-2 {61})	60	0	0
Follow up on Stagnant Water	3	0	10
Follow up on trash service required (9-13)	0	0	1
Follow up on Weedy Lot/Weedy Businesses	34	15	78

<b>Total for Follow-Ups</b>	<b>176</b>	<b>55</b>	<b>111</b>
<b>CALLS FOR SERVICE</b>	<b>700</b>	<b>363</b>	<b>818</b>
<b>NOTICE OF COMPLY ISSUED</b>	<b>18</b>	<b>14</b>	<b>5</b>
<b>WARNINGS ISSUED</b>	<b>3</b>	<b>1</b>	<b>6</b>
<b>CITATIONS ISSUED</b>	<b>1</b>	<b>1</b>	<b>1</b>



# Recycling Stats

## February 2013

### Port of Brownsville Recycling

The Environmental Health Services Department has teamed up with Port of Brownsville Recycling (PBR), as an additional source for our recycling needs. PBR is conveniently located off of Highway 48, on FM 511 in Brownsville, where aluminum, plastic, office paper, news paper, tin, and cardboard are accepted. Other materials are accepted as well, such as lead acid batteries, car batteries, and various metals. In addition to accepting recyclable materials, PBR sells recycled materials like electric motors, plate and structural steel, various metals and alloys.

# Represents Pounds Recycled of each product	February 2013	January 2013
Cardboard	1,450	1,580
Plastic	880	765
Newspaper	665	675
Office Waste	330	225
Tin	55	50
Aluminum	85	40
Totals :	3,465	3,335

