

Animal Control Stats	December 2012	December 2011	November 2012
Animal Bite / Scratch	0	0	1
Animal Cruelty Concern	0	1	0
Animals Placed in Quarantine	0	0	1
Animals Released to Wild	3	14	5
ANIMALS RELEASED TO FRIEND OF THE ANIMAL/SEALIFE CENTER	6	12	5
Barking Dog Violation (Citation Issued)	1	0	0
Beached/Dead Animal (Signal 0)	11	21	7
Cat or Dog Returned to Owner	2	3	1
Clean up after pets	1	1	0
Follow up on Abandoned Puppies	3	0	0
Follow up on Animal Bites / Scratch	0	0	3
Follow up on Cleaning up after pets	1	1	0
Follow up on Loose Dog or Cat Complaint	0	2	0
Follow up on Lost Pet	3	8	0
Follow up on Owner to Vaccinate Pet	2	0	0
Follow up on Quarantine Case	0	0	5
Follow up on Welfare Concern	0	1	0
Injured Animal	4	8	2
Loose Canines Or Cats	7	17	2
Lost Dog / Cat	2	3	1
Monitor Trap Set by Code	15	1	0
Owners to Vaccinate Dogs	2	2	0
Patrol for Owners not cleaning up after pets	38	65	66
Scan Animal for Microchip	5	2	0
Snake Concern	0	2	0
Traps Issued or Returned	4	5	0
Traps Set Up by Code Enforcement	15	1	0
Welfare Concern	1	1	0
TOTALS	126	171	99



TIP OF THE MONTH


Do you know how to help protect yourself from dog bites?

Unfortunately, even our favorite pets can sometimes bite. Here are some tips you can use to help prevent dog bites:

- Never approach a dog that you don't know.
- Report stray dogs or dogs displaying unusual behavior.
- Remain motionless when approached by an unfamiliar dog -- never run or scream.
- Do not disturb a dog that is sleeping, eating, or caring for puppies.
- If it appears that a dog is going to attack you, throw an article of clothing or something else at the dog that the dog can bite instead of biting you.
- If a dog leaps at you, cover your head and neck. It is very important that you try to keep the dog away from your head and neck.
- If knocked down by a dog, lie still and remain in a ball.
- Do not play aggressive games with your dog; for example, wrestling.
- Never try to separate fighting dogs.
- If bitten by a dog, immediately report the bite.

Information was provided by the website www.helpkeepkidssafe.org

**CITY OF SOUTH PADRE ISLAND
HEALTH DEPARTMENT STATS
DECEMBER 2012**

PERMIT #	ESTABLISHMENT	ADDRESS	PERMIT FEE	Re-Inspection/Score
5573	The Big Donkey	4215 Padre Blvd.	6 mth	100
5737	Jake's Flowers & Gift Baskets	2500 Padre Blvd.	\$100.00	97
5738	Bada Bing Bagels	1817 Padre Blvd.	\$100.00	94
5739	D' Pizza Joint	2413 Padre Blvd.	\$100.00	97
5740	Blackbeard's Restaurant	103 E. Saturn	\$100.00	97
5737	Jake's Flowers & Gift Baskets	2500 Padre Blvd.	\$0.00	Compliance
5738	Bada Bing Bagels	1817 Padre Blvd.	\$0.00	Compliance
5739	D' Pizza Joint	2413 Padre Blvd.	\$0.00	Compliance
5740	Blackbeard's Restaurant	103 E. Saturn	\$0.00	Compliance
	6 Month Inspections	1	\$0.00	
	Total Compliance	4	\$0.00	
	Field Investigations	0	\$0.00	
	Farmer's Market Permits	0	\$0.00	
	Total Temporary Inspections	0	\$0.00	
	Total Establishment Permits (annual)	4	\$400.00	
	Total Health Inspections	9	\$400.00	

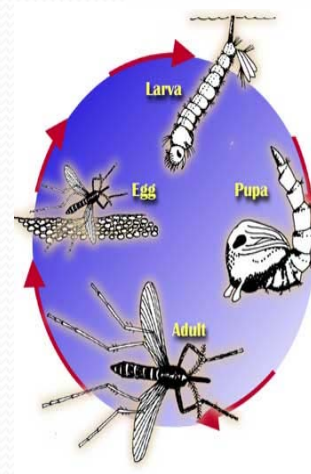
Foodborne Illness is a major concern to the restaurant and foodservice industry. A foodborne illness is a disease carried or transmitted to people by food. A foodborne-illness outbreak involves two or more people experience the same illness after eating the same food. (ServSafe Essentials Third Edition)

Mosquito Management Stats

December 2012



# Represents Amount of Times Performed	December 2012	November 2012	October 2012
Altosid/BTI (larviciding)	0	38	59
Adulticide Spraying	0	3	10
Scheduled for Adulticide	46	57	62
Landing Rate Counts	0	5	12
Mosquito concerns	0	2	3
Work done in Chemical room	3	5	10
Totals :	49	110	156



Mosquito Fast Facts

Mosquito is Spanish for "little fly."

The word reportedly originated in the early 16th century. In Africa, mosquitoes are called "Mozzies".

There are more than 3,500 species of mosquitoes. About 175 of them are found in the United States, with the *Anopheles quadrimaculatus*, *Culex pipiens*, and *Aedes aegypti* (Asian tiger mosquito) among the most common. The *Anopheles* is a malaria carrier, and the other two are known to spread various forms of encephalitis.

Mosquitoes don't have teeth. The females "bite" with a long, pointed mouthpart called a proboscis. They use the serrated proboscis to pierce the skin and locate a capillary, then draw blood through one of two tubes.

A mosquito can drink up to three times its weight in blood. Don't worry, though. It would take about 1.2 million bites to drain all the blood from your body.

Sources: The American Mosquito Control Association; the U.S. Centers for Disease Control; the U.S. Department of Agriculture; and, entomology and agriculture departments at the University of California – Davis, Colorado State University, Rutgers University, University of Nebraska, and the University of Florida.



City of South Padre Island

Code Enforcement Stats

December 2012

	Dec-12	Nov-12	Oct-12
Beach Patrol Section C TIME'S X HOURS/ MIN.	0	0	2 x 6 min
BFI Bundle/Brush Locations (Sec. 9-17)	38	0	32
Concern citizens/Ordinance Info. (Code 5)	128	189	109
Debris/Misc. on Roadway Removed	41	14	30
Effluent Discharge (Sec. 10-1)	1	0	2
Enclosures Proper/Screened (Sec. 9-13(B)(5))	1	2	0
Graffiti (Sec 12-21)	3	3	0
Hotel Inspection (341.066)	0	0	1
Littering Prohibited (Sec. 9-3)	4	0	0
Maintenance of Signs (Sec. 15-11(B,C)) (15-2)	0	4	0
Noises--Loud, disturbing, etc. prohibited (Sec.12-2)	0	1	0
Overgrown weeds on commercial property (Sec. 4-56)	1	6	2
Owners to maintain clean premises (Sec.9-12)	9	1	10
Patrol by (Code 11)	2	3	10
Permit Req. on Signs (Sec. 15-3)	11	2	0
Prohibited Banner/Sign (Sec. 15-5)	11	15	6
Sign Standards (Sec. 15-7)	1	0	0
Stagnant Water (Sec.9-4)	0	0	1
Weedy Lots (Sec. 9-6)	58	56	44
Weedy Lots Letters (Sec. 9-8)	0	124	105
Follow up on Banners/Signs/Required Signs	5	8	5
Follow up on brush and debris	31	38	0
Follow up on Containers Required (9-13A)	1	0	0
Follow up on damage dumpster (Sec 9-13B)	0	1	0
Follow up on Hotel Room Inspection (341.066)	0	0	3
Follow up on Effluent Discharge/Stagnant	2	0	2
Follow up on Enclosures	2	2	0
Follow up on littering (sec 9-3)	2	0	0
Follow up on Noise (Sec. 12-2)	0	1	0
Follow up on Outdoor Display	0	0	0
Follow up on Overfilled dumpsters	0	0	0
Follow up on property cleanup	5	6	7
Follow up on recreational vehicles	0	0	0
Follow up on shade device ordinances	0	0	0
Follow up on Stagnant Water	0	0	0
Follow up on trash service required (9-13)	0	0	0
Follow up on Weedy Lot/Weedy Businesses	92	51	143
Total for Follow-Ups	143	112	161

CALLS FOR SERVICE	475	537	519
NOTICE OF COMPLY ISSUED	3	3	0
WARNINGS ISSUED	4	2	0
CITATIONS ISSUED	0	0	0

Recycling Stats

December 2012

How Much Energy is Consumed to Make Bottled Water???

Taken from the article "How Much Energy Goes Into Making a Bottle of Water?" on March 17, 2009, by Lisa Zyga, on Phys.org

Since world consumption of bottled water has increased by 70% since 2001 to 200 billion liters in 2007, some people have become concerned about the environmental, economical, and social impacts of bottled water. In a recent study, researchers Peter Gleick and Heather Cooley from the Pacific Institute in Oakland, California, have estimated the energy required to produce bottled water, including the energy required to manufacture plastic, fabricate the plastic into bottles, process the water, fill and seal the bottles, transport the bottles, and chill the bottles for use.

Combining all the energy input totals, Gleick and Cooley found that producing bottled water requires between 5.6 and 10.2 million joules of energy per liter, depending on transportation factors (a typical personal-sized water bottle is about 0.5 liters). That's up to 2,000 times the energy required to produce tap water, which costs about 0.005 million joules per liter for treatment and distribution.

Read more at: <http://phys.org/news156506896.html#jCp>

# Represents Pounds Recycled of each product	December 2012	November 2012
Cardboard	1100	3200
Plastic	500	250
Newspaper	500	900
Office Waste	700	700
Tin	25	60
Aluminum	40	40
Totals :	1965* *Weights are estimated	5150* *Weights are estimated

