

**NOTICE OF SHORELINE TASK FORCE REGULAR MEETING
CITY OF SOUTH PADRE ISLAND**

**TUESDAY, NOVEMBER 9, 2021
3:00 PM AT THE MUNICIPAL COMPLEX
2ND FLOOR COUNCIL CHAMBERS**

4601 PADRE BOULEVARD SOUTH PADRE ISLAND, TX 78597

1. Call to Order

2. Pledge of Allegiance

3. Public Comments and Announcements

This is an opportunity for citizens to speak to Shoreline Task Force relating to agenda or non-agenda items. Speakers are required to address the board at the podium and give their name before addressing their concerns. [Note: State law will not permit the Task Force to discuss, debate or consider items that are not on the agenda. Citizen comments may be referred to City Staff or may be placed on the agenda of a future Shoreline Task Force meeting]

4. Regular Agenda

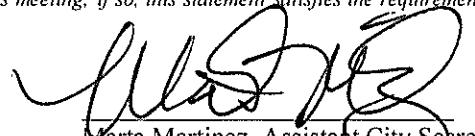
- 4.1. Discussion and action to approve the minutes from the regular meeting on October 5, 2021. (Hughston)
- 4.2. Discussion and action to approve the minutes from the regular meeting on October 26, 2021. (Boburka)
- 4.3. Discussion and action to hold a special meeting on November 30, 2021. (Boburka)
- 4.4. Discussion and possible recommendations regarding vehicle and trailer parking along Gulf Boulevard. (Nixon)
- 4.5. Discussion and action to provide a recommendation to City Council on the statement of qualification that was received for the Coastal Management Program's Cycle 26 Sea Island Beach Access Amenity Improvements grant. (Hughston, Boburka)

5. Adjourn

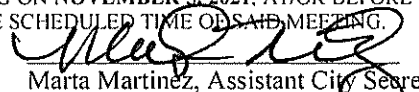
NOTE:

One or more members of the City of South Padre Island City Council may attend this meeting; if so, this statement satisfies the requirements of the OPEN MEETINGS ACT.

DATED NOVEMBER 5, 2021


Marta Martinez, Assistant City Secretary

I, THE UNDERSIGNED AUTHORITY, DO HEREBY CERTIFY THAT THE ABOVE NOTICE OF MEETING OF THE SHORELINE TASK FORCE OF THE CITY OF SOUTH PADRE ISLAND, TEXAS IS A TRUE AND CORRECT COPY OF SAID NOTICE AND THAT I POSTED A TRUE AND CORRECT COPY OF SAID NOTICE ON THE BULLETIN BOARD AT CITY HALL/MUNICIPAL BUILDING ON **NOVEMBER 5, 2021**, AT/OR BEFORE 3:00 PM AND REMAINED SO POSTED CONTINUOUSLY FOR AT LEAST 72 HOURS PRECEDING THE SCHEDULED TIME OF SAID MEETING.


Marta Martinez, Assistant City Secretary

THIS FACILITY IS WHEELCHAIR ACCESSIBLE, AND ACCESSIBLE PARKING SPACES ARE AVAILABLE. REQUESTS FOR ACCOMMODATIONS OR INTERPRETIVE SERVICES MUST BE MADE 48 HOURS PRIOR TO THIS MEETING. PLEASE CONTACT BUILDING OFFICIAL, GEORGE MARTINEZ AT (956)761-8103.

Agenda: NOVEMBER 9, 2021



**CITY OF SOUTH PADRE ISLAND
SHORELINE TASK FORCE
AGENDA REQUEST FORM**

MEETING DATE: November 9, 2021

NAME & TITLE: Kristina Boburka, Shoreline Director

DEPARTMENT: Shoreline Department

ITEM

Discussion and action to approve the minutes from the regular meeting on October 5, 2021. (Hughston)

ITEM BACKGROUND

Minutes from the October 5, 2021 meeting.

BUDGET/FINANCIAL SUMMARY

None

COMPREHENSIVE PLAN GOAL

N/A

LEGAL REVIEW

Sent to Legal:

Approved by Legal:

RECOMMENDATIONS/COMMENTS:

**MINUTES OF REGULAR MEETING
CITY OF SOUTH PADRE ISLAND
SHORELINE TASK FORCE**

Tuesday, October 5th, 2021

I. CALL TO ORDER.

The Shoreline Task Force of the City of South Padre Island, Texas, held a regular meeting on Tuesday, October 5th, 2021, at the Municipal Complex Building, 2nd Floor, 4601 Padre Boulevard, South Padre Island, Texas. Chairman Virginia Guillot called the meeting to order at 3:00 p.m. A quorum was present with Task Force Chairman Virginia Guillot, Task Force Members Robert Nixon, Stormy Wall, Norma Trevino, and Michael Sularz. Task Force Members with an excused absence include Abbie Mahan.

City staff members present were: Shoreline Director Kristina Boburka and Coastal Coordinator Erika Hughston.

II. PLEDGE OF ALLEGIANCE.

Chairman Virginia Guillot led the Pledge of Allegiance.

III. PUBLIC COMMENTS AND ANNOUNCEMENTS:

Task Force Nixon apologized for missing the September 21st meeting, cancelled due to lack of quorum.

IV. REGULAR AGENDA

I. DISCUSSION AND ACTION TO APPROVE THE MINUTES FROM THE REGULAR MEETING ON SEPTEMBER 14TH, 2021. (HUGHSTON)

Task Force Member Nixon made a motion to approve the minutes. Task Force Member Wall seconded the motion. Motion carried unanimously.

II. DISCUSSION AND ACTION TO PROVIDE A RECOMMENDATION TO CITY COUNCIL ON THE BIDS RECEIVED FOR THE COASTAL MANAGEMENT PROGRAM'S CYCLE 24 DUNE RESTORATION GRANT. (HUGHSTON, BOBURKA)

Shoreline Director Kristina Boburka and Coastal Coordinator Erika Hughston gave input on bids received and withdrew for the Dune Restoration Grant. The remaining bids

included Coastal Transplants and Belaire Environmental Inc. Shoreline Task Force discussed the funding solutions for full use of grant funds and the priorities addressed with using a full funding amount. Task Force Member Trevino made a motion to recommend to City Council to select Coastal Transplants. The motion was seconded by Task Force Member Nixon. Motion carried unanimously.

V. ADJOURNMENT.

There being no further business, Chairman Guillot adjourned the meeting at 3:12 p.m.

Erika Hughston, Coastal Coordinator

Virginia Guillot, Chairman

**CITY OF SOUTH PADRE ISLAND
SHORELINE TASK FORCE
AGENDA REQUEST FORM**

MEETING DATE: November 9, 2021

NAME & TITLE: Kristina Boburka, Shoreline Director

DEPARTMENT: Shoreline Department

ITEM

Discussion and action to approve the minutes from the regular meeting on October 26, 2021. (Boburka)

ITEM BACKGROUND

Meeting minutes from October 26, 2021.

BUDGET/FINANCIAL SUMMARY

None

COMPREHENSIVE PLAN GOAL

N/A

LEGAL REVIEW

Sent to Legal:

Approved by Legal:

RECOMMENDATIONS/COMMENTS:

**MINUTES OF REGULAR MEETING
CITY OF SOUTH PADRE ISLAND
SHORELINE TASK FORCE**

Tuesday, October 26th, 2021

I. CALL TO ORDER.

The Shoreline Task Force of the City of South Padre Island, Texas, held a regular meeting on Tuesday, October 26th, 2021, at the Municipal Complex Building, 2nd Floor, 4601 Padre Boulevard, South Padre Island, Texas. Vice Chairman Rob Nixon called the meeting to order at 3:01 p.m. A quorum was present with Task Force Vice Chairman Rob Nixon, Task Force Members Stormy Wall, Norma Trevino, Abbie Mahan, and Michael Sularz. Task Force Members with an excused absence include Virginia Guillot.

City staff members present were: City Manager Randy Smith, Shoreline Director Kristina Boburka, and Coastal Coordinator Erika Hughston.

II. PLEDGE OF ALLEGIANCE.

Vice Chairman Rob Nixon led the Pledge of Allegiance.

III. PUBLIC COMMENTS AND ANNOUNCEMENTS:

There were no public comments at this time.

IV. REGULAR AGENDA

I. DISCUSSION AND ACTION TO APPROVE THE MINUTES FROM THE MEETING ON OCTOBER 5, 2021. (HUGHSTON)

Shoreline Director Kristina Boburka pulled this item to edit the minutes and said they will be brought back at the next meeting.

II. DISCUSSION AND ACTION TO APPROVE THE MINUTES FROM THE REGULAR MEETING ON OCTOBER 12, 2021. (HUGHSTON)

Task Force Member Abbie Mahan motioned to approve the minutes from the regular meeting on October 12, 2021. Task Force Member Michael Sularz seconded the motion. Task Force Member Stormy Wall abstained from the motion. Motion carried unanimously.

III. DISCUSSION AND POSSIBLE RECOMMENDATION REGARDING VEHICLE AND TRAILER PARKING ALONG GULF BOULEVARD. (NIXON)

Vice Chariman Rob Nixon gave a brief description on the background of this item. He mentioned the City's attorney, Ed Cyganiewicz, has been working on draft language to update the City's ordinances in regard to this item and request. He should be available at the next Shoreline Task Force meeting on November 9, 2021, so that the Task Force can discuss and provide possible recommendations to City Council. A motion to table this item to the next meeting was made by Abbie Mahan and seconded by Task Force Member Norma Trevino. Motion carried unanimously.

IV. UPDATE ON THE DEEP WATER MARINA FEASIBILITY STUDY. (BOBURKA)

Shoreline Director Kristina Boburka gave an update on the deep water marina feasibility study which is currently being conducted by Edgewater Resources for the South Padre Island Economic Development Corporation. She gave a presentation on possible locations and design concepts. The study should be completed within the next few months.

V. ADJOURNMENT.

There being no further business, Vice Chairman Nixon adjourned the meeting at 3:23 p.m.

Erika Hughston, Coastal Coordinator

Rob Nixon, Vice Chairman

**CITY OF SOUTH PADRE ISLAND
SHORELINE TASK FORCE
AGENDA REQUEST FORM**

MEETING DATE: November 9, 2021

NAME & TITLE: Kristina Boburka, Shoreline Director

DEPARTMENT: Shoreline Department

ITEM

Discussion and action to hold a special meeting on November 30, 2021. (Boburka)

ITEM BACKGROUND

BUDGET/FINANCIAL SUMMARY

COMPREHENSIVE PLAN GOAL

LEGAL REVIEW

Sent to Legal:

Approved by Legal:

RECOMMENDATIONS/COMMENTS:

**CITY OF SOUTH PADRE ISLAND
SHORELINE TASK FORCE
AGENDA REQUEST FORM**

MEETING DATE: November 9, 2021

NAME & TITLE: Kristina Boburka, Shoreline Director

DEPARTMENT: Shoreline Department

ITEM

Discussion and possible recommendations regarding vehicle and trailer parking along Gulf Boulevard. (Nixon)

ITEM BACKGROUND

BUDGET/FINANCIAL SUMMARY

COMPREHENSIVE PLAN GOAL

LEGAL REVIEW

Sent to Legal:

Approved by Legal:

RECOMMENDATIONS/COMMENTS:

**CITY OF SOUTH PADRE ISLAND
SHORELINE TASK FORCE
AGENDA REQUEST FORM**

MEETING DATE: November 9, 2021

NAME & TITLE: Kristina Boburka, Shoreline Director

DEPARTMENT: Shoreline Department

ITEM

Discussion and action to provide a recommendation to City Council on the statement of qualification that was received for the Coastal Management Program's Cycle 26 Sea Island Beach Access Amenity Improvements grant. (Hughston, Boburka)

ITEM BACKGROUND

The City was awarded funding through the Coastal Management Program (CMP)'s Cycle 26 to provide access amenity improvements to the Sea Island Circle Beach Access (#5). The City went out statement of qualifications for engineering services and received one from LJA Engineering. Their SOQ is attached in the packet.

BUDGET/FINANCIAL SUMMARY

Funding is through the Coastal Management Program's Cycle 26.

CMP Funds: \$120,000

Matching Funds: \$80,000

COMPREHENSIVE PLAN GOAL

Chapter III. Parks and Resources

GOAL 1: The City shall ensure protection and conservation of natural resources, such as beaches, dunes, wetlands, Laguna Madre waterfront and native flora and fauna, allowing for their sustainable use and enjoyment by future generations.

Objective 1.1 Beach and dunes shall be protected from both natural and artificial erosion.

LEGAL REVIEW

Sent to Legal:

Approved by Legal:

RECOMMENDATIONS/COMMENTS:

CITY OF SOUTH PADRE ISLAND

Sea Island Circle Beach Access
Amenity Improvements

RFQ #2021-SL04

Copy

November 4, 2021



LJA ENGINEERING

TABLE OF CONTENTS

SECTION A

Firm Introduction 01

SECTION B

Project Manager Qualifications 03

SECTION C

Project Team Qualifications 05

SECTION D

Firm's Work Experience 15

SECTION E

Record of Performance 20

SECTION F

Adequacy of Cost Estimates/Performance..... 25

SECTION G

Resources & Capabilities..... 26

SECTION H

Project Approach 27

SECTION I

Comments on Standard Form Agreement..... 33

FORMS

Certification and Acknowledgment Form/Pending Litigation



LJA ENGINEERING

FIRM INTRODUCTION



A



5350 S Staples Street, Suite 425, Corpus Christi, Texas 78411
t 361.991.8550 f 361.993.7569 LJA.com TBPE F-1386 TBPLS 10104001

POINT-OF-CONTACT

 Jay Gardner
 Assistant Project Manager
 361.360.2138
 jgardner@lja.com

November 4, 2021

City of South Padre Island
City Secretary
4601 Padre Blvd
South Padre Island, Texas 78579

Re: RFQ 2021-SL04 Sea Island Circle Beach Access Amenity Improvements

Dear Members of the Selection Committee,

LJA Engineering, Inc. (LJA) is pleased to be invited to submit a Statement of Qualifications in response to the City of South Padre Island's request for the Sea Island Circle Beach Access Amenity Improvements.


LJA is an employee-owned, comprehensive multi-disciplinary consulting firm that offers one-source, one-stop reliability for all of its clients, when and where they need us. Our team stands at the ready with experienced coastal, civil, transportation, midstream, and rail engineers, plus hydrologists, environmental specialists, planners, landscape architects, construction managers, GIS designers, and surveyors. LJA has become one of the largest and most adept engineering and environmental teams in the state of Texas with over 70 dedicated environmental specialists and 100 environmental service offerings.

Headquartered in Houston, and with several offices located along the Texas Gulf Coast including Corpus Christi, Beaumont, and Galveston, LJA has performed work in South Padre Island and surrounding areas for decades. Our regional presence is backed by over 1,300 professionals, many of whom have relevant experience to this project. LJA has successfully helped numerous Texas municipalities, counties and other local entities develop and implement beach/dune projects in compliance with federal, state, and local regulatory requirements, while working within funding source requirements.

We understand that this project is funded in part by a Coastal Management Plan (CMP) grant, and that funding is a critical component. We are familiar with the project site, and believe that permitting the proposed restroom should not be financially cumbersome or overly complicated. In addition, we would likely recommend a pre-engineered building (available from several sources, i.e., CXT) from a supplier that we have worked with in the past. This approach should yield an end product that meets all codes and requirements in an efficient and cost effective manner.

We are proud of our team's size, but even more so because of the comprehensive array of environmental analysis, permitting, engineering, and regulatory compliance services we offer. We appreciate the opportunity to present this Statement of Qualifications and look forward to working with the City on this project. If you have any questions regarding our submittal, please contact me directly.

Sincerely,



Jay Gardner
Assistant Project Manager

A » FIRM INTRODUCTION

We seek solutions.

LJA was established to be the premier engineering firm across the Southeastern US by providing high quality, innovative, and cost-effective services to our clients. From the beginning, the firm stood out by recognizing the importance of quality engineering solutions amid a culture of visionary leadership and collaborative delivery. Our reputation is built upon a 49-year legacy of mutual trust – among our staff and our clients – driving our commitment to deliver the best solutions to complex building and business challenges.

Founded in 1972 when John “Dutch” Lichliter established The Lichliter Company, Bill Jameson joined the firm in 1976 as president and the firm was renamed Lichliter/Jameson & Associates. The firm evolved into LJA Engineering, Inc. in 2011, as it is known today. At LJA, we continue to build upon our reputation, while broadening our knowledge and constantly striving to be better.

To us, there is no measure that matters more than our own drive to exceed the firm we were yesterday. And, to our clients, this is what they value most and have come to expect. Our history defines us, but in no way limits us. We are proud of landmark projects from our past and look forward to blazing a new path and setting the new standard. The best companies are about great people — and great people, working together, make great projects.

With over 1,300 employees in 43 offices across Texas, Tennessee, Oklahoma, Florida, and Georgia, we are organized around nine comprehensive sectors:

- » Public Infrastructure
- » Land Development
- » Energy Services
- » Environmental & Coastal
- » Surveying
- » Rail Services
- » Water Resources
- » Construction Engineering & Inspection
- » Transportation

LJA has received awards for not only project excellence, but more importantly for our ability to connect with our employees, our clients, and our communities. National and regional awards over the years include:



- » Top Workplace
- » Best Places to Work
- » Hot Firm
- » Fast 100
- » Top Design Firm
- » Top Civil/Structural Firm

LJA was recently named #57 by ENR National as a Top 500 Design Firm, #41 as a Top Pure Design Firm, #124 by ENR Top 150 Global Design, and as the 2019 Design Firm of the Year by ENR Texas & Louisiana.

49

YEARS IN BUSINESS

1,300

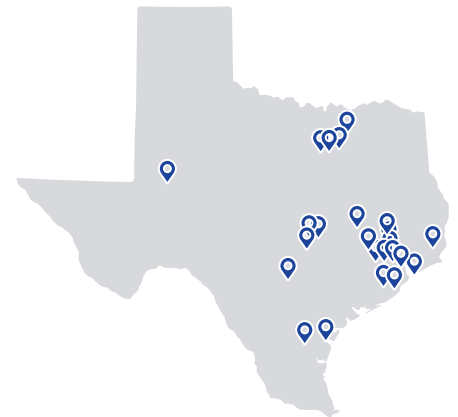
EMPLOYEE OWNERS

9

SECTORS

43

OFFICES



SOQ • City of South Padre Island
Sea Island Circle Beach Access Amenity Improvements

We seek solutions. » 1

Our depth of services is comprehensive, our breadth of knowledge leads the industry, and our regional influence continues to positively impact our personal and professional communities.

EMPLOYEE OWNERSHIP

Defining characteristics inherent to LJA keep us at the forefront of our industry. We offer a singular and unique perspective to our clients that is defined by our very DNA. At our core, LJA is comprised of our people and our client-centered, teamwork-driven culture. Our employee-owners work tirelessly to build LJA's reputation of experts in our chosen disciplines and precision in our engineering solutions. The LJA difference is our people who make the commitment to treat every client like a part of the LJA Family. We believe in keeping relationships for life.

ENVIRONMENTAL EXPERTISE

The LJA team includes seasoned professional leaders in the fields of wetlands science and regulatory permitting, wildlife ecology, aquatic and terrestrial biology, geology, prehistoric and historic archeology, historical architecture, and NEPA compliance. We help our clients develop strategic programs that satisfy all applicable state/federal regulations in an efficient manner, while improving the natural resources in their communities. Our unique team of professionals are recognized experts in their respective fields, each with many years of experience conducting objective and reliable scientific and technical studies.

Moreover, each member of our professional staff understands how those studies apply towards achieving your project's particular environmental permitting and regulatory compliance needs.

LJA specializes in compliance with federal, state, and local environmental regulations including National Environmental Policy Act (NEPA), Clean Water Act Section 404 (Wetlands), Endangered Species Act, and Comprehensive Environmental Response, Compensation, and Liability Act (CERCLA, or Superfund).



SOQ • City of South Padre Island
Sea Island Circle Beach Access Amenity Improvements

CORE MANAGEMENT



PRINCIPAL-IN-CHARGE

Jeff Coym, PE



PROJECT MANAGER

Doug Dusini, PE



ASSISTANT PROJECT MANAGER

Jay Gardner



ENVIRONMENTAL SERVICES



- » Dune Permitting
- » Coastal Restoration
- » Coastal Infrastructure
- » Rivers and Channels
- » Numerical Modeling
- » Disaster Recovery
- » Design & Construction Oversight
- » Phase I/Phase II MS4 Permits
- » Stormwater Pollution Prevention Plans (SWP3)
- » Environmental Assessments
- » Spill Prevention Control/Countermeasure
- » Wastewater Discharge Permit Applications and Renewals
- » Cultural Resources
- » National Environmental Policy Act (NEPA) Compliance Assessments
- » US Army Corps of Engineers (USACE) Permitting Preparation and Coordination
- » Hazardous Materials Assessments
- » Mitigation Plans & Monitoring
- » Environmental GIS/CADD Mapping

We seek solutions. » 2

PROJECT MANAGER QUALIFICATIONS



B

B » PROJECT MANAGER QUALIFICATIONS



DOUG DUSINI, PE

PROJECT MANAGER



SIMILAR DESIGN EXPERIENCE

Doug graduated from Ohio State University, where he studied coastal hydraulics for his MS in civil engineering and environmental engineering for his BS in civil engineering. He is a licensed Professional Engineer in Texas, South Carolina, North Carolina, and Florida. During his 16 years of coastal engineering practice, he has designed and managed projects along the Texas and Florida gulf coasts, the southeastern Atlantic coast of the United States, and at several locations in the Caribbean as well as Bermuda. His project management experience includes shoreline and transportation infrastructure and beach re-nourishment, inlet stabilization and relocation, assessment of potential storm damage to residential structures, navigational and recreational area dredging, FEMA flood map revisions, assessment of storm damage to residential and other coastal structures, coastal hydraulics modeling, and construction project inspection.

RELEVANT PROJECT EXPERIENCE

Protection of State Highway 87 From Gulf of Mexico Flooding and Shoreline Retreat, Galveston County, TX – Mr. Dusini analyzed roadway protection measures to reduce flood frequency and pavement damage caused by a rising and encroaching Gulf of Mexico on Bolivar Peninsula in Galveston County. Proposed measures included grade raising of the pavement surface, rock revetment within the highway right of way, improvements to vehicular beach access points, and dune restoration.

Lynchburg Ferry Emergency Repairs, TX – Mr. Dusini assessed the conditions of the existing breakwater that provides wave protection for ferries while in berth at the north landing. He developed detailed calculations as part of the analysis of typical as well as extreme waves and currents at the site. He prepared detailed design and bid documents including drawings and specifications for the rubble-mound breakwater and its tie-into the existing riprap revetment, which allowed for adequate clearance for the ferry hulls at extreme low-water conditions, and overtopping protection for a 50-year sea level rise. Mr. Dusini also optimized the length of the breakwater for a replacement structure at the berthing area.

Sabine River Authority Parks and Recreation Master Plan, Lake Fork, TX – Mr. Dusini performed preliminary site development of the marina facilities and boat ramp at Caney Point on Lake Fork, and assessed the undeveloped coastline at eight sites on three lakes within the Sabine River Authority to find detrimental and beneficial shoreline properties for a variety of recreational projects. He performed detailed engineering

16 YEARS OF EXPERIENCE

EDUCATION

2005, MS, Civil Engineering,
Ohio State University

2001, BS, Civil Engineering,
Ohio State University

PROFESSIONAL LICENSE

2017, PE, Texas #127813
Expiration Date: 6/30/2022

PE, South Carolina #27764
PE, North Carolina #036593
PE, Florida #71756

CERTIFICATIONS/ MEMBERSHIPS

American Shore & Beach
Preservation Association

American Society of Civil
Engineers

PUBLICATIONS

"The effect of Lake Erie water level variation on sediment resuspension." Journal of Great Lakes Research. Volume 35, Issue 1, March 2009, Pages 1-12. Douglas S. Dusini, Diane L. Foster, Jennifer A. Shore, Carolyn Merry.



SOQ • City of South Padre Island

Sea Island Circle Beach Access Amenity Improvements

We seek solutions. » 3

River Authority to find detrimental and beneficial shoreline properties for a variety of recreational projects. He performed detailed engineering investigations to assess the dredge and excavation quantities for the marina basin and approach channels. He also identified potential permitting requirements and investigated other site characteristics including cove and shoreline areas that are suitable for boat ramps and related amenities, nearshore slopes suitable for beaches and boat beaching areas, dredging and excavating possibilities.

Harris County WCID No. 1 (2017), FEMA Flood Damage Assistance, Highlands, TX – Mr. Dusini is currently managing the FEMA grant application process for the water control and improvement district in Highlands, Texas. The WCID plant, which sits adjacent to the San Jacinto River, was flooded during Hurricane Harvey, and flooding damaged equipment critical to the operation of the plant. The flooding damaged equipment critical to the operation of the plant. As project manager, Mr. Dusini has developed preliminary engineering reports detailing the damage to the facilities and to specific components. He is working closely with the FEMA program manager, as well as the district general manager, technical consultants, and subconsultants to maximize mitigation efforts and reimbursement for work completed.

Velasco Drainage District, Freeport Coastal Storm Risk Management and Ecosystem Restoration, Certification of Velasco Hurricane Flood Protection Levee, Freeport/Lake Jackson, TX – Mr. Dusini developed detailed calculations to evaluate wave runup and overtopping of the earthen levee as well as the wave forces on the levee's structural components as part of the District's USACE levee certification. Computed the maximum horizontal wave force acting on five vertical structures—Power 2 gate and Plant A wastewater outfall, the Memorial Tide Gate, and two Dow cooling water intake structures. Computed horizontal forces and runup at the A611 building bulkhead and at eight T- or I-wall structures within the levee system. Performed detailed analysis to quantify the deficiencies of the levee system and developed two tiers of corrective measures for achieving acceptable conditions for the levee system.

Highway 3 Boat Ramp Facilities Upgrade, Galveston County, TX – Mr. Dusini is the project manager for facilities upgrades to a community boat ramp park including parking lot upgrades, lighting, picnic pavilion, water, electrical, information kiosks, and installation of a new kayak launch with an ADA access ramp. He has prepared construction cost estimates for several design scenarios, and developed the rehabilitation plans for the 40-vehicle parking that includes ADA access.

Sabine River Authority, Lake Tawakoni Spillway Channel Bank Stabilization, Northeast, TX – Mr. Dusini prepared the detailed design and bid documents including drawings and specifications for the 400-ft long steel retaining wall along the spillway channel's east bank. He prepared the construction cost estimate and prepared detailed volume calculations of the project's excavation requirements.

Sienna Plantation Levee Improvement District, Steep Bank Creek Channel Bank Stabilization, Missouri City, TX – Mr. Dusini designed the 3,800 cubic yard gabion dike along the bend of the creek that has been eroding the toe of the levee, particularly during extreme flooding. The Sienna Plantation Levee, in Missouri City, Texas, protects several hundred million dollars' worth of residential infrastructure. The gabion dike is designed to protect the earthen levee from the erosive effects of flood water, while redirecting the flow away from the threatened bank and toward the center of the stream.

Sarasota County Bay Island Park Seawall Replacement – Mr. Dusini was the site engineer for the construction management phase of the seawall replacement project. The project consisted of replacing over 400' of the island park's concrete-panel bulkhead with poured-on-site reinforced concrete panels stabilized with tie-backs and concrete deadmen. Mr. Dusini redesigned the concrete cap at the bulkhead corner section to accommodate a grade elevation change during construction. The park project also included landscape design, paving and walkways, benches and picnic areas, and pedestrian hand railing.



PROJECT TEAM QUALIFICATIONS



C

C » PROJECT TEAM QUALIFICATIONS



JEFF COYM, PE

 **PRINCIPAL-IN-CHARGE**



SIMILAR DESIGN EXPERIENCE

Jeff has 20 years of experience in municipal infrastructure design and project management, largely within Corpus Christi and along the Texas Gulf Coast. He is responsible for directing efforts of project teams, including the surveying and mapping and CADD technicians, to successfully completing specific projects. Mr. Coym's experience includes projects carried from preliminary investigations through design and construction phases, to final job acceptance.

20 YEARS OF EXPERIENCE

EDUCATION

2002, BS, Civil Engineering,
Texas Tech University

PROFESSIONAL LICENSE

2008, PE, Texas #101983
Expiration Date: 9/30/2022

CERTIFICATIONS/ MEMBERSHIPS

American Council of
Engineering Companies

American Society of Civil
Engineers

RELEVANT PROJECT EXPERIENCE

City of Corpus Christi, Bear Lane from SPID to Old Brownsville Road, Corpus Christi, TX – Project Engineer for this \$6.26M project, including reconstruction and widening of an existing two-lane rural section roadway with drainage ditches to a three-lane curb and gutter section with storm sewer and drainage outfall. Project included significant waterline and sewer line replacement/rehabilitation. Work included surveying and mapping, preliminary engineering, final design, bidding, and construction phase services.

City of Corpus Christi, Buddy Lawrence Drive, IH 37 to Antelope Street, Corpus Christi, TX – Project Engineer for this \$2.72M project, including complete rehabilitation of the existing two-lane concrete and asphalt street sections with drainage ditches to a three-lane curb and gutter section with underground storm sewer. Project also included utilities rehabilitation and upgrade of all utilities. Work included surveying and mapping, preliminary engineering, final design, bidding and construction phase services.

City of Corpus Christi Rodd Field Road Expansion, Saratoga Blvd to Yorktown Blvd, Corpus Christi, TX – Project Engineer for this \$15.2M project. The scope of this project is to reconstruct 9,000 LF of City Arterial Street along with replacement of all pertinent utilities. This project is currently in the construction phase.

City of Portland Phase 9 Street Improvements, Portland, TX – Project Manager for this \$3.5M project. Phase I included full depth reconstruction of eight roadways and overlay operations of ten roadways including ADA ramps, parking lot and sidewalk expansions, and pavement repair to various portions of eighteen streets in the City of Portland. Phase II included removing 2,100 LF of the existing Memorial Parkway northbound lane and curb and gutter along the west side and replacing with new flexible (asphalt) pavement with an alternate for a concrete (rigid) pavement, curb and gutter, ADA ramps, 10' x 6" reinforced concrete curvilinear hike/bike trail path in median, and associated pavement markings.



SOQ • City of South Padre Island
Sea Island Circle Beach Access Amenity Improvements

We seek solutions. » 5



JAY GARDNER

 **ASSISTANT PROJECT MANAGER**



SIMILAR DESIGN EXPERIENCE

Jay has been involved with beach and dune permitting, restoration, and mitigation for fifteen years. Projects have included developments, walkovers, and dune restoration on Padre and Mustang Island, South Padre, Cameron County beaches and Matagorda Island, as well as permitting and compliance monitoring for USACE permits regarding beach maintenance. He is very knowledgeable of local beach/dune rules, Texas Administrative Code Chapter 15, The Open Beaches Act and Chapters 61-63 of the Natural Resources Codes dealing with beach access, rights, and dune protection. Mr. Gardner has spent many volunteer hours drafting and revising Beach Management Plans with the City of Corpus Christi, Nueces County, Cameron County, and the TGLO.

Mr. Gardner has worked with a variety of coastal governments, UTBEG, the TGLO, citizen committees and task forces regarding beach and dune mapping, management, and protection. Mr. Gardner has also served to review proposed projects from local governments, engineers and scientists. His staunch review of projects typically results in additional protection or improvement of projects and our natural resources, that typically result in cost savings through efficiency.

RELEVANT PROJECT EXPERIENCE

REPRESENTATIVE BEACH/DUNE PROJECTS

- » Jim Williams Beach Access/"drive-over" and Dune Permit
- » Joseph Cabela Beach Access/"drive-over" and Dune Permit
- » James Worth Beach Access/"drive-over" - Utilities Port Aransas Dune Permit
- » Windsport Venue Phase I, City of South Padre
- » Cameron County Beach Maintenance Permit (USACE) and Monitoring
- » Bob Hall Pier Expansion
- » Nueces County Beach Maintenance Permit and Monitoring
- » Nueces County Coastal Parks Master Plan
- » Port Royal Walkover
- » Island Park Estates Subdivision and Walkover
- » Beachview Estates Subdivision and Walkover
- » Lost Colony Dune Restoration
- » Sunrise Shores Subdivision and Walkover
- » La Concha (various lots, DPP/BCC) Subdivision and Walkover
- » Bella Vista Subdivision
- » BriteStar Subdivision and Walkover
- » Padre Balli Park Improvements
- » Shoreline Protection Projects
- » Laguna Point Recreational Area - City of Port Mansfield

22 YEARS OF EXPERIENCE

EDUCATION

2000, BS, Biology, Texas A&M University - Corpus Christi

CERTIFICATIONS/ MEMBERSHIPS

OSHA HAZWOPER

Certified Wetland Delineator;
Wetland Training Institute

MOCC Boat Certification
USFWS/DOI

Vice President, Coastal
Conservation Association,
Corpus Christi Chapter

Chair, Habitat Today/Fish for
Tomorrow Committee, Coastal
Conservation Association
(CCA) State Board

Chair, Island Strategic Action
Committee for the Corpus
Christi City Council

Committee for the Corpus
Christi City Council

Previous Co-Chair, Watershore
and Beach Advisory



SOQ • City of South Padre Island
Sea Island Circle Beach Access Amenity Improvements

We seek solutions. » 6

- » **Fulton Beach Road - City of Rockport/Fulton**
- » **Little Bay Oyster Restoration Project**
- » **Packery Channel Park - Nueces County**
- » **PJ's Marina**
- » **JFK Boat Ramps and Bulkhead**
- » **Tortuga Harbor**

Beach and Dune Permitting and Restoration Experience

- » Intimate knowledge of Texas Administrative Code Chapter 15, The Texas Open Beaches Act and Chapters 61-63 of the Natural Resources Code. Also intimately familiar with most of the Beach Management Plans and Erosion Response Plans for Texas Coastal Counties.

Permitting and Regulatory

- » Provided project and permitting support for civil and coastal engineering projects including roadways, drainage improvements, wastewater treatment plants, oil and gas pipelines, beach maintenance and nourishment, and private developments
- » ESA formal and informal ESA Section 7 endangered species act consultation for City of Corpus Christi, Nueces County, City of Port Aransas, Cameron County, TGLO, and private developments

Wetland Delineations and Habitat Characterizations

- » Performed wetland delineations in accordance with the 1987 USACE Wetlands Delineation Manual and the Atlantic and Gulf Coast Regional Supplements for City of Corpus Christi, Nueces County, City of Port Aransas, Koch Pipeline, City of Leakey, TWDB, USDA, URS and many private companies and individuals
- » Performed habitat characterizations and environmental assessments in association with the USACE regulatory process for over 10 years
- » Have performed Endangered and Threatened Species surveys and studies and coordinated with USFWS and TPWD regarding listed species for most central and south Texas counties

NEPA Compliance

- » Categorical Exclusion Document (CE) – Williams Drive Phase III – resulted in a FONZI finding. CE document for TxDOT and FHA. Coordinated with multiple partners (City of Corpus Christi and sub-consultants)
- » Environmental Assessment (EA) – SH 200 Ingleside Industrial Corridor – researched and drafted EA document for TxDOT and FHA. Work also included coordination with the Texas Historical Commission. Approval pending (8/2013)
- » NEPA compliance required for all USACE Individual Permits

Environmental Assessments and Other Regulatory Experience

- » Project support associated with Phase I Environmental Site Assessments for San Patricio County, City of Ingleside, and Baffin Bay Water Supply Company
- » Development and submittal of Texas General Land Office (GLO) land lease applications for City of Corpus Christi, City of Port Aransas, many private landowners (piers and docks) and the oil and gas industry
- » Have completed and approved several Environmental Reports for USDA – State Revolving Fund and EDAP Programs





ROBIN WARRICK, PE, SIT

 **ENGINEERING AND DESIGN**



SIMILAR DESIGN EXPERIENCE

Robin is a structural engineer and project manager in LJA's Marine Facilities Group and has been with LJA since 2012. He served in his current project manager role for eight years and has over 15 years of experience designing bulkheads, bridges, docks, mooring / berthing systems, structural inspections and piping and industrial structures. Robin's responsibilities have included project management, design supervision, structural design, civil design, cost estimating, scheduling and specification development.

15 YEARS OF EXPERIENCE

EDUCATION

2007, BS, Civil Engineering,
Lamar University

PROFESSIONAL LICENSE

2011, PE, Texas #110393
Expiration Date: 9/30/2022

PE, New Mexico
PE, Oklahoma
PE, Iowa
PE, Pennsylvania
PE, Louisiana
PE, Colorado

CERTIFICATIONS/ MEMBERSHIPS

American Society of Civil
Engineers

Coasts, Oceans, Ports, and
Rivers Institute – Regional Chair
(Texas Section, Beaumont)

RELEVANT PROJECT EXPERIENCE

Dock Inspections, Port of Texas City (POTC), Texas City, TX – Project Manager/Lead Engineer for the dock inspection program. Tasks include inspection and condition assessment of 13 liquid transfer docks and the associated shore protection, as well as, making repair recommendations including location, method and urgency. Additional tasks include bid document preparation, contractor selection assistance, construction support and repair inventory.

Confidential Client, Ingleside, TX – Project Manager for structural inspection and dock capacity analysis. Tasks included a partial structural health inspection of concrete connections, assessment of dock to increase berthing capacity for larger and deeper vessels, mooring/berthing analysis, recommend modifications for dock upgrade, and project scheduling.

Velasco Drainage District (VDD) Levee Inspection/FEMA Certification, Brazoria County, TX – Assistant Project Manager/Lead Structural Engineer/Inspector for inspection of the 66 structure on VDD's federal levee. Tasks for this project included inspecting and assessing the current structural integrity and performing a design checks of the levee structures for compliance with FEMA and USACE regulations, and making repair recommendations to bring deficient structures up to an acceptable rating for VDD to obtain a levee certification.

Lake Corpus Christi Intake Structure Rehab, Alice Water Authority, Mathis, TX – Discipline Lead for evaluation and design of shoring options of the existing pump house, a steel building on concrete deck support with braced steel pipe columns. Responsibilities included shoring functionality and constructibility review with marine contractors.

Dock 40/41 Turning Cell Rehabilitation, Port of Texas City, TX – Project Manager/Lead Structural Engineer for the rehabilitation design of a 60' diameter turning cell. Responsibilities included detailed analysis of a pile supported cellular structure, and repair sleeve, and construction support.



SOQ • City of South Padre Island
Sea Island Circle Beach Access Amenity Improvements

We seek solutions. » 8



DAVID SHERRILL

REGULATORY AND PERMITTING



SIMILAR DESIGN EXPERIENCE

David has 27 years of experience in wetland and land use management and over 22 years as a Project Manager for environmental services. He has expertise in the USACE Clean Water Act Section 404 wetland permitting, CWA Section 401 Water Quality Certification, and the Rivers and Harbors Act Section 10. He has a diverse background in natural resource assessment, specializing in wetland delineations, wetland permitting, and the creation and mitigation of wetlands and Section 401 water quality plans. David has a thorough knowledge of environmental and wetland regulations, particularly the Clean Water Section 404, allowing him to successfully coordinate large-scale, multi-task projects. He also has expertise with coastal permitting issues and has consulted and coordinated over 50 projects located within the coastal zone or within submerged land owned by TGLO. In addition to USACE permit approval, the coastal projects involved the coordination of approved TGLO coastal land use permits, Beach Construction Certificates, and/or dune mitigation plans. During his 22 years of employment with LJA, David has coordinated over 450 wetland delineations which were verified by the USACE, coordinated permit approval for over 100 Individual Permits and 250 Nationwide Permits including NW 7, 12, 13, 14, 26, 29, 33, 39, 42, 18. He has also completed over 20 Section 10 dredge and fill permits.

27 YEARS OF EXPERIENCE

EDUCATION

1995, Master of Applied Geography Resource and Environmental Studies, Southwest Texas State University

1993, BS, Resource and Environmental Studies, Southwest Texas State University

CERTIFICATIONS/MEMBERSHIPS

Certified Wetland Delineator

Society of Wetland Scientists

Federal Energy Regulatory Commission (FERC) Training and Certification

National Environmental Policy Act (NEPA) Training and Certification

Texas Department of Transportation Certification No. 6551 – precertified in 1.3.1, 2.3.1, 2.4.1, 2.4.2, 2.4.3, 2.5.1, 2.6.1, 2.6.2, and 2.13.1

RELEVANT PROJECT EXPERIENCE

Rockport Islands, Islands of Rockport, LP, Aransas County, TX – Islands of Rockport, LP purchased the 72-acre tract located east of the S.H. 35 and S.H. 188 intersection in Aransas County for the purpose of developing a waterfront canal residential subdivision. Mr. Sherrill delineated eight non-tidal, freshwater wetlands totaling 13 acres, 1.5 acres of sea grasses, tidal fringe wetlands, and the Section 10 boundary. A wetland delineation was also conducted for the 35-acre off-site wetland mitigation area which contained 20 acres of non-tidal jurisdictional wetlands. Both wetland delineations were mapped using GPS equipment according to the Corps 2003 GPS standard operating procedures. Mr. Sherrill also assisted the client during the Individual Permit process to impact unavoidable impacts for the purpose of developing a canal residential development with direct marine access to the Gulf Intracoastal Waterway.

Springwoods Development, Harris County, TX – Mr. Sherrill was the project manager for the wetland delineation and subsequent permitting work for this 315-acre area. Of the wetlands delineated, it was determined that the project would qualify for a Nationwide Permit 29. A Nationwide permit application was submitted to the Corps requesting authorization to fill wetlands in order to construct outfall structures into Spring Creek as well as place fill for lots.





PETER RAVELLA, JD

REGULATORY AND PERMITTING



SIMILAR DESIGN EXPERIENCE

Peter is a coastal consultant with expertise in a broad range of services for public and private sector clients along the coast, working primarily in Texas, North Carolina, and Florida. He is the Publisher of Coastal News Today and the American Shoreline Podcast Network and Co-host of the American Shoreline Podcast. For more than two decades, Peter has collaborated with project engineers, planners, architects, local elected officials, and government staff to plan, fund and execute coastal plans and projects. He has extensive experience in shoreline management planning and coastal project development, permitting and implementation. He is an experienced project team leader proficient in coastal land planning, coastal land use policies and regulations, CEPR erosion response planning, beach and dune restoration, federal and state permitting, beach access planning, state and federal agency coordination, community engagement, grant acquisition and project financing. Peter is highly skilled in public communication, outreach and stakeholder engagement.

Peter's focus is the integration of regulatory compliance, community perspectives, and project funding into the planning and design processes to ensure that coastal projects are not only technically sound but affordable, meet the needs of the community, and satisfy the requirements of regulatory agencies. Since 2000, Mr. Ravello has developed and put in place more than \$250 million in project funding using a wide array of financing tools such as grants, bonds, hotel occupancy and sales tax revenues, ad valorem taxes, and creation of special tax districts in a variety of forms. His moto: Understand the Problem, Find the Solution.

RELEVANT PROJECT EXPERIENCE

SHORELINE PLANNING & PERMITTING EXPERIENCE

- » Cameron County Erosion Response Plan
- » South Padre Island, North Shore Study, Texas General Land Office
- » City of South Padre Island Erosion Response Plan
- » Jamaica Beach Erosion Response Plan
- » Cameron County Isla Blanca Park, Site Planning, Beach Access & Dune Mitigation Permit
- » Cameron County E.K Atwood, Site Planning, Beach Access & Dune Mitigation Permit
- » Cameron County Andy Bowie Park Site Planning & Permitting
- » South Padre Hilton Garden Inn Beach Access & Dune Permit
- » Shores Subdivision, South Padre Island, Beach Access Plan & Beach/Dune Permit

33 YEARS OF EXPERIENCE

EDUCATION

1983, BS, Marine Biology,
Honors, Texas A&M University

1986, JD, Environmental Law.
Lewis & Clark College

CERTIFICATIONS/ MEMBERSHIPS

ASBPA and TSBPA Board

Washington and Oregon State
Bar Association

PUBLICATIONS

SPI and Cameron County
Erosion Response Plans,
Co-Author

Texas Coastal Management
Program, Final Environmental
Impact Statement, Co-Author

Texas Coastwide Erosion
Response Plan – A report to
the 75th Texas Legislature,
Co-Author

ASBPA White Paper, Coastal
Funding for Local Projects, An
Overview of Considerations,
Policies and Practices, Local
Funding Workgroup Chair and
Co-Author

- » Ocean Tower, South Padre Island, Beach/Dune Permit Construction & Demolition
- » La Quinta Hotel, South Padre Island, Dune Restoration Plan, Beach Access & Dune Permit
- » Centex Destination Resorts, Point San Luis Development, Galveston, Beach Access & Dune Permit
- » Matagorda County Nature Park & Preserve, Matagorda County, Beach Access & Dune Permit

PROJECT PLANNING & FINANCING EXPERIENCE

- » Charlotte County, FL Shoreline Management Plan and Financing Strategy
- » SPI Restore Act Grant Applications
- » Palacios Pavilion Financing Plan, Palacios, TX
- » Lake Nasworthy Redevelopment and Land Use Plan, San Angelo, TX
- » Terminal Groin Financing Plan, Village of Bald Head Island, NC
- » Lasara Community Trail Project Financing & Grant Management, Lasara, TX
- » Beach Restoration Project Financing Plan, Town of Surf City, NC
- » Coastal Project Funding, Hotel Occupancy Tax Restructuring, South Padre Island , TX
- » Beach Restoration Project Financing Plan, Town of North Topsail Beach, NC
- » Beach Restoration Project Financing Plan, Town of Topsail Beach, NC
- » Willacy County, CIAP Grant Administration and Planning
- » Laguna Point Recreation Area, Planning and Financing, Port Mansfield, TX
- » Coastal Lands Resources Center, Planning and Financing, Port Mansfield, TX
- » Harbor Boat Ramp Rehabilitation, Grant Acquisition & Planning, Port Mansfield, TX
- » Southern Small Craft Boat Launch, Grant Acquisition & Planning, Port Mansfield, TX





NATALIE DAVIS

REGULATORY AND PERMITTING



SIMILAR DESIGN EXPERIENCE

Natalie has over 12 years of experience in environmental sciences with specific focus on scientific data collection of both terrestrial and marine habitats and developing technical reports. She offers extensive knowledge and understanding of current federal permitting guidelines and mitigation requirements, particularly Section 404 of the Clean Water Act. She has a seasoned background in observing and interpreting the interactions between flora and fauna within marine environments and coastal habitats, including the long-term interactions among the two. She has conducted with over 80 wetland delineations, prepared and permitted over 60 applications for Nationwide Permits (NWP) and Individual Permits (IP) for submission to the United States Army Corps of Engineers (USACE). Her involvement at LJA has also contributed to the completion of mitigation planning and monitoring with over 90 field determinations of wetland habitats according to the USACE permitted guidelines.

12 YEARS OF EXPERIENCE

EDUCATION

2012, MS, Coastal Management, NOVA Southeastern University

2009, BS, Marine Biology, Texas A&M University at Galveston

CERTIFICATIONS/ MEMBERSHIPS

SCUBA Diving Certifications: Dive Master, Advanced, Rescue, Nitrox, AAUS, NSS-CDS Cavern

USACE Wetland Delineation Training Certificate

Texas Boating Safety Course Certificate

TCEQ Air Permitting 101 Certificate 2016

40-Hour HAZWOPER OSHA/RCRA Certification

USEPA 40 CFR 60 Visible Emissions Evaluator Certificate

Post Federal Award Requirements Training Certificate

RELEVANT PROJECT EXPERIENCE

Islands of Rockport, Aransas County, TX – Assisted with the on and off site and seagrass mitigation associated with the Individual Permit for Islands of Rockport, a canal-dependent residential development. The project involved a survey of existing conditions and management of the wetland creation areas on and off site. To implement the required seagrass creation, intensive research was conducted to determine the most appropriate seagrass transplant method with the highest success rates. BOA concluded that the use of “peat pots” for individual seagrass transplant was the best option financially as well as environmentally. The original transplanted seagrasses have shown exceptional growth and there is evidence of propagation of new seagrass within the transplant area. Monitoring of the created seagrass bed has been initiated and will continue until the created wetlands have met the required USACE minimum success criteria. Determining the survival rate of planted seagrasses along shoreline is critical for the long-term of the shoreline as well as the ecological balance for this specific area. Continued routine coastal vegetation survival monitoring. Received approval of 6 permitted residential docks extending over state owned lands through the General Land Office (GLO).

Spoonbill Bay, Galveston County, TX – Performed wetland delineation on the 115-acre site located in Galveston, Texas. Identified multiple features on the subject property including, wetlands, salt marshes, sand flats, and seagrass beds. Submitted the Individual Permit to the USACE for the residential circular canal development plan. Performed seagrass bed survey and sand flat monitoring survey for the presence of Threatened and Endangered Species.





ALBERT FRANCO JR., PE, RPLS

 **SITE INVESTIGATION AND SURVEYING**



SIMILAR DESIGN EXPERIENCE

Albert is a registered professional land surveyor and registered professional engineer in Texas. As a surveyor, he has over 40 years of experience in land surveying and topographic surveying. Albert has performed various topographic and land surveys along the Texas Gulf Coast including municipalities and developers. He also has Subsurface Utility Engineering (SUE) experience and has been providing SUE for improvement projects. He has over 10 years of SUE experience in the location and routing of various utilities on along street right of ways and in the surrounding Bays.

44 YEARS OF EXPERIENCE

EDUCATION

1978, BS, Civil Engineering,
University of Texas at Austin

PROFESSIONAL LICENSE

1986, RPLS, Texas #4471
Expiration Date: 12/31/2021

1993, PE, Texas #77597
Expiration Date: 6/30/2022

CERTIFICATIONS/ MEMBERSHIPS

TxDOT pre-certifications: 6.1.1,
15.1.1, 15.2.1, 15.2.2, 15.3.5, 18.2.1

RELEVANT PROJECT EXPERIENCE

McGee Beach Shoreline Stabilization, Great Southern Dredging, Inc., Corpus Christi, TX – Set tide gage at borrow sites A and B. Set benchmark on steps of McGee Beach. Provide before and after dredge soundings at Borrow Site A and portion of B1, B8, B9, B10, B11 and B12 of Borrow Site B. Provide drawings and volume calculations for both borrow sites. Hydrographic surveys of the remainder of Borrow Site B will be provided if needed.

Gollihar Road, City of Corpus Christi, Corpus Christi, TX – Performed topographic surveys along Gollihar Road from Kostoryz to Weber, including all utilities, stormwater, and wastewater locations. The ROW alignment was also surveyed to determine for the design limits. Vertical and horizontal control was tied in to the City GPS monuments.

Nourishment of Corpus Christi Beach, Longhorn Excavators, Inc., Corpus Christi, TX – Provide topographic/ hydrographic surveys, cross-sections, and quantity computations, as directed by client, in support of Client's contract with the City of Corpus Christi to nourish the beach at North Beach.

North Slip New Bulkhead Project, Port of Texas City, Corpus Christi, TX – Perform topographic survey and tie visible obstacles which will interfere with the pile driving between Dock 14 and 15. Perform underwater assessment along the existing sheet pile bulkhead as indicated on sketch provided by Champ-East. Provide hydrographic survey 200' from shoreline and provide a drawing.

Port of Corpus Christi Docks, Port of Corpus Christi Authority, Corpus Christi, TX – Performed bathymetric surveys on various docks in the Corpus Christi Ship Channel for annual maintenance dredging. They were performed from the toe of the ship channel to the face of the docks or to the shoreline. Electronic equipment with GPS capability was used.





DAVID NESBITT, RPLS, LSLS

 **LSLS SURVEYING**



SIMILAR DESIGN EXPERIENCE

David manages the survey departments for both of LJA's Corpus Christi and the Alice offices and is responsible for directing the efforts of survey crews, survey technicians, and CAD operators, performing records research, preparing estimates, calculating surveys, preparing field notes, and all other tasks associated with surveying and mapping projects. He has over 45 years of experience in all facets of the surveying and mapping field including National Geodetic Survey (NGS) control surveys, state land surveys, wetlands delineation surveys, boundary surveys, topographic surveys, route surveys, oil field lease identification, aerial mapping and photography surveys, construction staking surveys, lawsuit review, and expert witness testimony. David is one of approximately 60 Texas Licensed State Land Surveyors.

RELEVANT PROJECT EXPERIENCE

Port of Corpus Christi Authority, Naval Station Ingleside Survey, San Patricio and Nueces Counties, TX – LSLS and Project Manager on this survey, which included deed record research of subject and adjoining property owners through local courthouse records as well as from the GLO. Working Sketches and retracement to locate as many original boundary markers in place to define the upland tracts. Also required was the State of Texas submerged land boundary as well as the limits of submerged tracts affecting the subject property. This 576.615-acre property consisted of a 483.158-acre upland tract and a 93.457-acre submerged tract.

Coastal Boundary Survey for South Bay Park Beach Nourishment Project, GLO Project #CL 19990014, City of Palacios, TX – LSLS Project Manager for this survey, which included scientific analysis of tidal data in order to determine the State of Texas submerged land boundary and adjacent filled area. Oversee preparation of maps and reports to GLO in order to permit project.

State Land Shoreline Determinations – Mean High Water and Mean Higher High Water surveys to establish the limits of State owned submerged land all along the Texas coast. Clients have included private citizens, governments, and industries.

Gradient Boundary Determinations – Determination of the Gradient Boundary Line along waterways in the State in order to establish the States ownership interests in these waterways. Clients have included private citizens, governments, and industries.

46 YEARS OF EXPERIENCE

EDUCATION

1976, CETA Drafting Program,
Del Mar College

PROFESSIONAL LICENSE

1999, RPLS, Texas #5302
Expiration Date: 12/31/2021

2002, LSLS, Texas #5302
Expiration Date: 12/31/2021

CERTIFICATIONS/ MEMBERSHIPS

Texas Society of Professional
Surveyors



FIRM'S WORK EXPERIENCE



D

D » FIRM'S WORK EXPERIENCE

JIM WILLIAMS/BILL JUDSON DUNE DEVELOPMENT

📍 Port Aransas, TX

👤 NAME OF TEAM LEADER

Jay Gardner

🛠️ DESCRIPTION OF FIRM'S ROLE

Environmental and Permitting
Services

💰 PROJECT COST

\$48,000

📅 YEAR OF WORK

2015 – Ongoing

👤 CONTACT PERSON

Nicole Boyer
City of Port Aransas
361.749.4111

✅ APPLICABILITY TO CITY'S PROJECT

- » Dune Permitting
- » New Beach Access Road

📄 PROJECT DESCRIPTION

The applicant had one of the few last platted lots that did not have landward road access to the property. Adjacent landowners did not have easements available, so a new beach access driveway was engineered and permitted to access the proposed property.

In addition, a water well and septic field (spray irrigation) were permitted through the local water district. Electricity easements were also secured and below-ground service was permitted.

The project is initiating construction as of October 2021.



JOSEPH CABELA BEACH HOUSES AND DUNE ACCESS

📍 Nueces County, TX

👤 NAME OF TEAM LEADER

Jay Gardner

📋 DESCRIPTION OF FIRM'S ROLE

Permitting, Environmental, and Engineering Services

💰 PROJECT COST

\$52,000

📅 YEAR OF WORK

2016 – 2020

👤 CONTACT PERSON

Joseph Cabela
512.694.7401

☑️ APPLICABILITY TO CITY'S PROJECT

- » New Beach Access Driveway
- » Dune Permitting
- » Amendment of Driveway Permit for the City of Port Aransas/TGLO

📄 PROJECT DESCRIPTION

Several platted lots without public street access were permitted for a private driveway from the beach to the lots in the rear of the platted subdivision.

This project also did not have access to water or wastewater service, so permits were approved through the Nueces County Water District #4 for water wells and septic fields (spray irrigation).



Dune mitigation was proposed and permitted on adjacent TGLO lands for both the houses and the driveway. Permitting and engineering were successful, and the houses look and function beautifully today.



PADRE BALLI PARK UPGRADES – RV PARK, BATHROOM, PARKING LOT

📍 Nueces County, TX

👤 NAME OF TEAM LEADER

Jay Gardner

📁 DESCRIPTION OF FIRM'S ROLE

Permitting and
Engineering Services

💰 PROJECT COST

\$350,000

📅 YEAR OF WORK

2018 – Current

👤 CONTACT PERSON

Scott Cross
Parks Director
Nueces County
361.949.8181

☑️ APPLICABILITY TO CITY'S PROJECT

- » Engineering
- » Dune Permitting
- » TGLO Coordination
- » Grant Administration Assistance
- » USACE Permitting

📄 PROJECT DESCRIPTION

Padre Balli Park suffered damages from Hurricane Harvey that undermined and damaged the park's RV pads, utilities, and other infrastructure.

Nueces County proposed to repair the damage and add upgrades, including an additional bathroom and laundry facilities. Our role was to design and permit the upgrades along with an additional bathroom.

The design and permitting was completed on schedule and within budget. These facilities survived Hurricane Hannah with little to no damage, due to our increased sustainability designs.



SOQ • City of South Padre Island
Sea Island Circle Beach Access Amenity Improvements

We seek solutions. » 17

JAMES WORTH RESIDENTIAL PROJECT

📍 Port Aransas, TX

👤 NAME OF TEAM LEADER

Jay Gardner

📋 DESCRIPTION OF FIRM'S ROLE

Environmental Services

💰 PROJECT COST

\$22,000

📅 YEAR OF WORK

2015

👤 CONTACT PERSON

Jim Worth
JWI Partners, Ltd
210.828.3657

☑️ APPLICABILITY TO CITY'S PROJECT

- » Wetland Delineation
- » USACE Coordination
- » TxGLO Coordination
- » Dune Permitting
- » Environmental Management
- » Mitigation Plan
- » Mitigation Monitoring
- » Agency Representation and Coordination

📄 PROJECT DESCRIPTION

This project included surveying for the line of vegetation, erosion line setbacks, and vegetated species for planned mitigation plan. The project was for a new beach access and utilities work for a private residence. The new beach access and "drive-over" for utilities and construction included mitigation impacts and permitting through the City of Port Aransas and the TGLO. The new beach access was also platted. Working with the TGLO and the City provided an opportunity to complete off-site mitigation, as the space was limited for on-site dune mitigation.



SHORES DEVELOPMENT – MASTER PLAN, BEACH DUNE PERMITTING, RESTORATION PLAN

📍 South Padre Island, TX

👤 NAME OF TEAM LEADER

Peter Ravella

📁 DESCRIPTION OF FIRM'S ROLE

Environmental and Permitting Services

💰 PROJECT COST

Multi-Million

📅 YEAR OF WORK

2007-2008

👤 CONTACT PERSON

Robert Franke
Shores Development Inc./
Franke Real Estate
847.356.5263



☑️ APPLICABILITY TO CITY'S PROJECT

- » Develop and Secure GLO Approval under GLO Beach-Dune Rules
- » Shores Public Access Plan
- » Shores Dune Mitigation and Restoration Plan.

📄 PROJECT DESCRIPTION

Peter Ravella was retained to assist Franke Realtors/Shores Development Inc. with the planning and permitting of The Shores subdivision project on South Padre Island, Texas. As the first large-scale development north of the City of SPI, the project required extensive coordination with the Texas General Land Office Beach Access and Dune Protection Program. Ravella lead the effort to develop the Beach/Dune Master Plan which authorized the entire development. Key issues successfully addressed included: (1) establishing a significant construction setback; (2) ensuring public beach access; and (3) developing a comprehensive dune mitigation and restoration plan. The project was successfully completed in accordance with the Master Plan and is considered a model beachfront development on the Texas coast.



RECORD OF PERFORMANCE



E

E » RECORD OF PERFORMANCE

E.K. ATWOOD PARK PAVILION IMPROVEMENTS

📍 South Padre Island, TX

👤 NAME OF TEAM LEADER

Peter Ravella

📁 DESCRIPTION OF FIRM'S ROLE

Environmental Services

💰 # OF CHANGE ORDERS

None

📄 PROJECT DESCRIPTION

LJA member Peter Ravella was part of the team of architects, engineers, and technicians commissioned by Cameron County to revitalize the existing E.K. Atwood Park facilities on South Padre Island. These facilities had been previously closed to the public for several years due to safety concerns with deterioration of the park's pavilion structure. Demolition of the existing pavilion was completed to allow construction of a new elevated boardwalk plaza with five covered pavilions, two open-air restroom facilities and a large rinse station water feature. The improvements also include two walkover structures that allow access from the plaza to the pedestrian beach, as well as stairs and ramps to the new parking lot constructed from an environmentally-conscious permeable paving system.



🧠 EXAMPLES OF INNOVATIVE SOLUTIONS THAT RESULTED IN COST SAVINGS

Cost savings were promulgated by the Team Lead by negotiation with TGLO on layouts, which provided cost savings due to less material used (i.e. shorter runs).

🔄 RESPONSIVENESS DURING CONSTRUCTION/COMMITMENT THROUGHOUT PROJECT

LJA team members continue to assist the City of South Padre Island and Cameron County, upon request, with various maintenance, monitoring, environmental, and regulatory projects.



SOQ • City of South Padre Island

Sea Island Circle Beach Access Amenity Improvements

We seek solutions. » 20

CAMERON COUNTY BEACH MAINTENANCE PERMIT MONITORING

📍 Cameron County, TX

👤 NAME OF TEAM LEADER

Jay Gardner

📁 DESCRIPTION OF FIRM'S ROLE

Environmental Services

💰 # OF CHANGE ORDERS

None

📄 PROJECT DESCRIPTION

This project included coordination with the USACE and USFWS regarding monitoring protocols for the Beach Maintenance Permit. These include quarterly monitoring for beach elevations, shorebird usage, sargassum, and coordinating with Sea Turtle Inc. and Padre Island National Seashore regarding sea turtle nesting programs and efforts.

This was a five-year monitoring program, required by the Permit in the Special Conditions, with a yearly report submitted to the USFWS and USACE.



🧠 EXAMPLES OF INNOVATIVE SOLUTIONS THAT RESULTED IN COST SAVINGS

Cost savings were promulgated by the Team Leader by negotiating with the USFWS regarding future monitoring, thereby ending the costs to the County.

🔄 RESPONSIVENESS DURING CONSTRUCTION/COMMITMENT THROUGHOUT PROJECT

LJA team members continue to assist the City of South Padre Island and Cameron County, upon request, with various maintenance, monitoring, environmental, and regulatory projects.



SOQ • City of South Padre Island
Sea Island Circle Beach Access Amenity Improvements

We seek solutions. » 21

SOUTH PADRE ISLAND EROSION RESPONSE PLAN

📍 South Padre Island, TX

👤 NAME OF TEAM LEADER

Peter Ravella

📁 DESCRIPTION OF FIRM'S ROLE

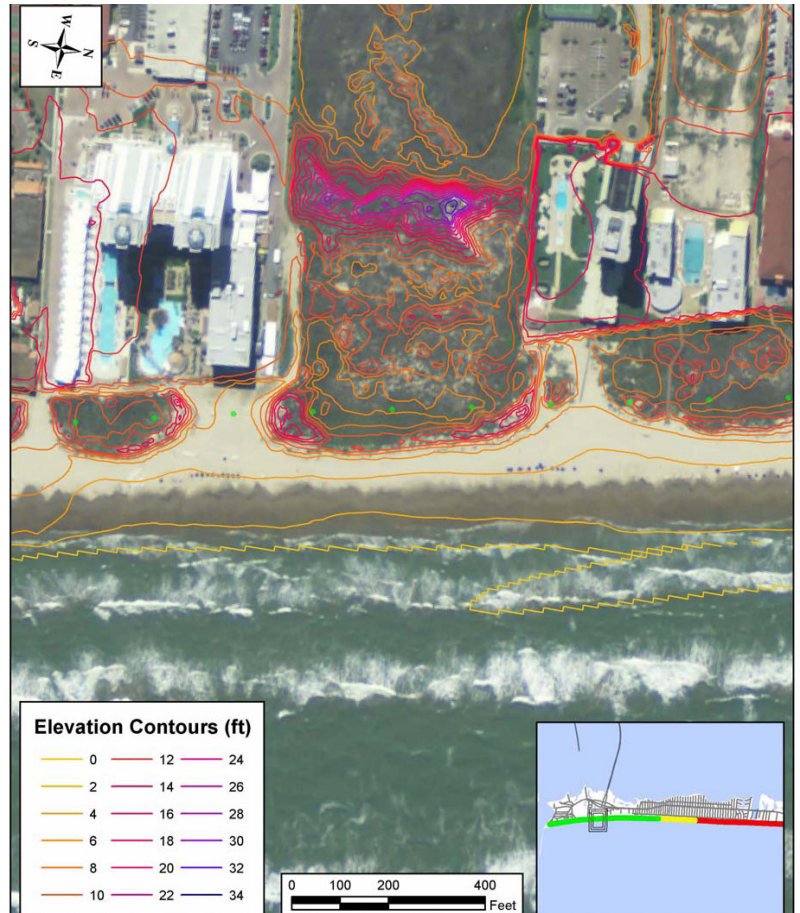
Environmental and
Engineering Services

💰 # OF CHANGE ORDERS

None

📄 PROJECT DESCRIPTION

In accordance with state law, the City of South Padre Island elected to prepare an Erosion Response Plan. In general, the purpose of this plan was to explore means and methods to reduce the public expenditures due to damage to property and infrastructure that can result from shoreline change, erosion, and storm conditions. LJA (as LEAP Engineering) evaluated shoreline change rates, beach profiles, and projected shoreline positions obtained from the UT-BEG. From the GLO, the City obtained the 2009 Texas Coastwide Erosion Response Plan, which includes substantial data and information necessary for the local plan, LIDAR elevation data, and updated aerial photography of the City's shoreline. Finally, the City compiled data on previous beneficial use projects, updated shoreline profiles, dune enhancement projects, and cost estimates for various shoreline management activities.



Services included:

- Perform initial site assessment
- Compilation of practices for:
 - » Beneficial use
 - » Updated shoreline profiles & shoreline rates of change
 - » Dune enhancement/planting
 - » Shoreline management/desired conditions
 - » Construction setbacks
 - » Cost estimates for shoreline management

🧠 EXAMPLES OF INNOVATIVE SOLUTIONS THAT RESULTED IN COST SAVINGS

Cost savings were based on the allocation of competent resources during the project initiation phase and tracking of actual vs. estimated spending throughout the project to take corrective measures ahead of time.

🔧 RESPONSIVENESS DURING CONSTRUCTION/COMMITMENT THROUGHOUT PROJECT

LJA team members continue to assist the City of South Padre Island and Cameron County, upon request, with various maintenance, monitoring, environmental, and regulatory projects.



PALISADE PALMS PHASES I, II, III AND IV

📍 Galveston County, TX

👤 **NAME OF TEAM LEADER**
David Sherrill

📁 **DESCRIPTION OF FIRM'S ROLE**
Environmental Services

💰 **# OF CHANGE ORDERS**
None

📄 **PROJECT DESCRIPTION**
The United States Army Corps of Engineers (USACE) authorized permit #SWG-2005-01402 to East Beach Project Phase III, Ltd. for the fill of 0.36 acres of jurisdictional adjacent wetlands within a 16-acre project area located in East Galveston Beach on Galveston Island, Texas. In

order to compensate for the permitted impacts, the applicant created a total of 0.72 acres of dune swale wetlands within a 7.6-acre mitigation area on the gulf side of Palisade Palms.



On November 1, 2008, the applicant began construction of the mitigation area to restore dunes that were destroyed by Hurricane Ike. The dune reconstruction efforts were coordinated with the Texas General Land Office and the applicant voluntarily restored the dunes. Because the dunes were located within the wetland mitigation area for SWG-2005-01402, the applicant created the dune swale wetland during the dune restoration efforts. The wetland areas were planted in the spring of 2009 and monitoring began in summer of 2009. Due to the presence of federally listed threatened and endangered species by the U.S. Fish and Wildlife Service (USFWS), the project and on-site mitigation areas had to be mitigated in a way that would not impact the federally listed threatened piping plover (*Charadrius melodus*), which is known to winter along the beaches of the Texas Gulf Coast. Texas has the highest population of wintering piping plovers, which exhibit strong site fidelity and territoriality. In addition to the piping plover, the endangered Kemp's Ridley sea turtle (*Lepidochelys kempii*) is known to nest in the vicinity of the project area.

🧠 **EXAMPLES OF INNOVATIVE SOLUTIONS THAT RESULTED IN COST SAVINGS**

On behalf of the City of Rockport and Aransas County through a joint effort project known as the Aransas Pathways project, we have developed a cost-effective habitat enhancement plan in an effort to restore and improve degraded wetland habitat areas in Aransas County. In particular, we restored wetlands in Rockport in a cost-effective manner that resulted in an increase in birding and eco-tourism to the Aransas County Rockport region.

🎯 **RESPONSIVENESS DURING CONSTRUCTION/COMMITMENT THROUGHOUT PROJECT**

We continue to maintain high quality habitat areas which include wetlands within six parks that are owned and operated by the Aransas Pathways project.



CAMERON COUNTY EROSION RESPONSE PLAN

📍 Cameron County, TX

👤 **NAME OF TEAM LEADER**
Peter Ravella

🔧 **DESCRIPTION OF FIRM'S ROLE**
Environmental and Engineering Services

💰 **# OF CHANGE ORDERS**
None

📄 **PROJECT DESCRIPTION**

In compliance with GLO rules and procedures, the project team prepared an Erosion Response Plan for Cameron County Texas for formal review and certification by the GLO. Team members conducted comprehensive shoreline risk assessment; documented shoreline conditions; updated shoreline change rates and dune conditions; identified and quantified dune weaknesses, dune gaps, and blowouts; developed dune enhancement and improvement strategy and dune design for 100-year storm level protection; engaged community leaders and stakeholders; developed erosion response strategies; drafted Beach Access & Dune Protection Plan Amendments; developed and draft nearshore construction and permitting standards; coordinated with General Land Office; and supported County ERP adoption and certification of the plan by GLO.



Services included:

- Extensive analysis of shoreline and dune conditions, nearshore transport & erosion rates
- Dune gap analysis & strategy for future enhancement (100-yr storm level protection)
- Assess & inventory all beach access and facilities
- Develop post-storm monitoring protocols
- Develop construction/shoreline management priorities:
 - » Establish building setback line
 - » Preserve, expand, & enhance dune system
 - » Facilitate more appropriate development via beach-dune permitting standards
 - » Assess/evaluate possible relocation of Park Rd 100
 - » Address/improve public beach use (vehicular impacts reduction)

🧠 **EXAMPLES OF INNOVATIVE SOLUTIONS THAT RESULTED IN COST SAVINGS**

Aggressive & ongoing public engagement to identify and resolve local issues; Early & ongoing Agency coordination; Developed dedicated ERP website for communication & plan sharing; Close coordination w/ client and stakeholders.

🎯 **RESPONSIVENESS DURING CONSTRUCTION/COMMITMENT THROUGHOUT PROJECT**
Provide on-going consultation services throughout GLO review and certification process.



SOQ • City of South Padre Island
Sea Island Circle Beach Access Amenity Improvements

We seek solutions. » 24

ACCURACY OF COST ESTIMATES & PERFORMANCE



F

F » ACCURACY OF COST ESTIMATES & PERFORMANCE

ACCURACY AND DEPENDABILITY OF PROJECTED COST ESTIMATES

The LJA team is well versed in working within set budget constraints for planning, design, and implementation of projects. Project Manager (PM), Doug Dusini, and Assistant Project Manager (APM), Jay Gardner, spend a significant amount of time at the beginning of a project investigating known potential issues that could affect progress. This includes an analysis of the City's stated schedule, scope and budget. Doug and Jay will perform an evaluation of the anticipated project phasing and costs to ensure budgets are accurate. They will then present the City with an assessment of the project schedule, scope and budget and suggested revisions based upon the findings. They will perform all of this work prior to contract negotiations with the City. By doing so, LJA and the City have a good understanding of the project requirements at the time that the contract is executed and each party is in agreement on schedule, scope and budget.

SENSITIVITY AND RESPONSIVENESS TO PROJECT BUDGET CONSTRAINTS

During the preliminary phase, LJA works closely with City staff to define a detailed project scope and estimate of probable costs to accomplish the project scope. Probable costs are identified in a Technical Planning Memorandum (TPM). If probable costs per the TPM exceed original budgets, LJA will suggest reductions in scope and/or cost saving measures to reduce costs. Once City staff makes a final decision on the proposed scope and cost solutions, the City will then authorize LJA to proceed with preparation of design documents per the final scope and budget. By approaching each Project in this manner, the LJA team ensures the City is fully aware of the probable costs of the requested project at each step of the design submittal process before proceeding to final design and bidding. The following project cost estimates were for permitting only, and the Padre Balli Park Upgrades were for engineering, permitting, and construction.

PROJECT NAME	PRE-BID COST ESTIMATE	ACTUAL COST
Joseph Cabela Beach Access	\$85,000	\$52,000
Jim Williams/Bill Judson	\$56,000	\$48,000
Padre Balli Park Upgrades	\$425,000	\$350,000
James Worth Residential	\$25,000	\$22,000

MEASURES TAKEN TO ENSURE PROJECTS REMAINED WITHIN BUDGET

On all four projects, cost savings were based on the allocation of competent resources during the project initiation phase, tracking of actual spending vs. estimated budget throughout the project to take corrective measures ahead of time, and refined engineering templates for maximum benefit and reduced environmental impacts (creating self-mitigating projects).

LJA's history of compliance with programs, schedules, and budgets is best exemplified by our record of attracting repeat and ongoing business with both public and private-sector clients over the last 45+ years.



RESOURCES & CAPABILITIES



G

G » RESOURCES & CAPABILITIES

TEAM'S CAPABILITIES AND APPROACH FOR HANDLING MULTIPLE PROJECTS

Team efficiency and expertise are keys to maintaining schedules and milestones. Our team structure provides us "bench strength", and allows our team to complete similar tasks on separate projects simultaneously with confidence. This also provides us with a level of expertise to find the most efficient ways of completing tasks without sacrificing quality. Meeting the project schedule is a team effort. Communicating issues to and with the City early is imperative to maintaining the schedule and minimizing costs. If an issue or component of the project is not originally scoped, and requires our services, LJA will contact the City immediately to understand the new scope and develop innovative solutions while still maintaining the project schedule and budget. Throughout the process, the PM and APM will lead weekly, and as needed, team meetings to track schedule and milestone progress, as well as to track schedule and budget progress.

ABILITY TO DELIVER PROJECTS WITHIN SPECIFIED SCHEDULE

LJA's team leaders will work together to assign resources from the various divisions throughout our company, as needed, to ensure tasks are completed in a timely manner and within budgets. The LJA Team is fully staffed with immediate availability to perform the services required for this project. In addition, the LJA Team has the local knowledge, technical expertise, and staff resources with experience in similar projects. LJA will take an aggressive attitude toward project scheduling by identifying potential bottlenecks and developing innovative ways to keep the project on track.

Key staff for this project are available and committed to perform their assigned roles, and will make the appropriate time commitment to ensure the successful completion of the project within the City's schedule. We carefully assess our project workload before committing to any project and make necessary adjustments to accommodate the demands for manpower or resources anticipated for successful project completion. The collective team assembled for this project anticipates no difficulty meeting schedule requirements. The following projects and estimated completion dates were for permitting components only. Dune permits are good for 3 years, and some clients elected to delay construction after permitting for whatever reason.

PROJECT NAME	ESTIMATED COMPLETION	ACTUAL COMPLETION
Joseph Cabela Beach Access	Fall 2016	Summer 2016
Jim Williams/Bill Judson	Winter 2017	Summer 2017
Padre Balli Park Upgrades	Spring 2019	Winter 2018
James Worth Residential	Fall 2016	Summer 2016

CONTINGENCY PLAN

PM Dusini and APM Gardner are experienced in and responsible for managing tasks and resources amongst all team members, while simultaneously tackling any unforeseen circumstances that may arise. They will closely monitor the availability of resources throughout the project and act quickly to counterbalance any shifts in manpower or resources that could impede progress. Should there be a need for additional manpower, LJA has the vast resources of a 1,300-person firm to call upon.



LJA has an extensive, local, and available team ready to serve the City of South Padre Island.



SOQ • City of South Padre Island
Sea Island Circle Beach Access Amenity Improvements

We seek solutions. » 26

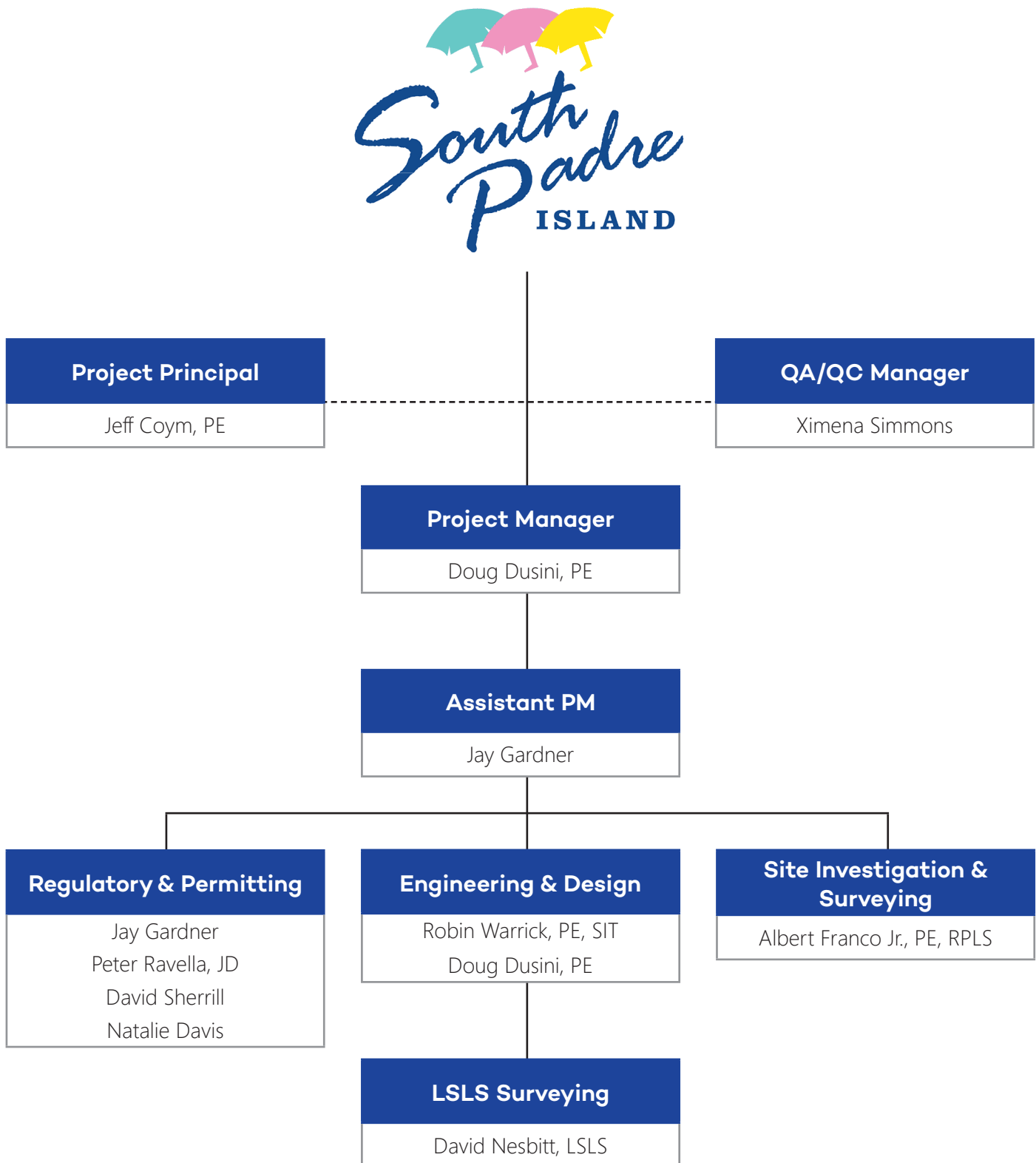
PROJECT APPROACH



H

H » PROJECT APPROACH

TEAM STRUCTURE/ORGANIZATION



PROJECT MANAGEMENT APPROACH

LJA's project management standards ensure that by working closely with clients, and approaching the project in an all-inclusive manner, accurate timelines and budgets are generated to guide the project through the conception-permitting-design-bid-construction process. The LJA team will work closely with City Staff, City Council, and the Shoreline Task Force at the start of the project to develop a comprehensive scope while identifying specific tasks and resource usage for schedule and project budget estimation. Schedulers, in consultation with the Project Manager, will identify critical-path elements to anticipate and avoid potential bottlenecks that may influence timely project execution, and work proactively to minimize any effect.

Our proven project management approach has consistently delivered solid performances as a result of the following key elements:







- Streamlined, efficient program management
- Local/regional project management and execution with experienced personnel from local offices
- Deep bench of technical specialists armed with experience on key technical and regulatory challenges
- Program management infrastructure for efficient schedule/cost management, cost reporting, QA/QC, health and safety contracts/procurement, and regulatory support
- Consistent project execution, reporting, and deliverable preparation
- Established project planning/execution process

Tasks are distributed and progress is tracked across all members of the project team to ensure successful completion. The project manager tracks the usage of budget dollars and resource hours to ensure the significant resources of the project delivery team are being directed in the most productive manner. Owner consultations at multiple stages of the project, as well as a rigorous QA/QC process, ensures the end result exceeds client quality standards.

PROJECT MANAGEMENT PLAN

During a project, LJA's Project Managers will be available 24/7. They will attend meetings with all parties involved to ensure projects are on schedule and any issues are resolved promptly. In coordination with the City, LJA's PM will develop a Project Management Plan (PMP) immediately after receiving Notice to Proceed (NTP).

The PMP will establish:

 Communication procedures between LJA and the City	 Kick-off meeting between LJA and the City	 Email communication protocols to track project progress
 Schedule of project progress meetings	 QA/QC policies and procedures	 File plan, CADD guidelines, design manuals, software

Team members will receive a copy of the PMP so that everyone understands their responsibility and the responsibilities of the other Team members. Proper coordination and information exchange between the LJA Team and the City will be closely tied to the PMP and communication protocols established therein. This greatly increases the quality of a final product, and minimizes conflicts during construction.

With adequate resources, you can count on LJA's ability to accelerate project schedules and handle multiple assignments while remaining within budget to ensure the City's intent will be met.



OVERVIEW OF PROJECT APPROACH

PROJECT MANAGEMENT

- Confirm project objectives as identified by the City (Owner)
- Coordinate with State and Local jurisdictions/agencies

Typical milestone activities/work products:

- » Kickoff meeting/notes and site visit
- » Develop project goals and performance criteria/memo of project understanding
- » Project management/monthly activity summary/schedule updates
- » Meet with City Council, City Staff, and the Shoreline Task Force as needed

SURVEY AND DATA COLLECTION

- Confirm project objectives as identified by the Owner
- Perform historical review and initial constructability/value engineering analysis and design
- Complete assessments and surveys, as required

CRITERIA AND DESIGN DEVELOPMENT

- Confirm project objectives as identified by the Owner
- Select Criteria for Evaluation Matrix
- Coordinate with City Staff, City Council, and the Shoreline Task Force to define required components
- Research manufacturers
- Review flood and windstorm certificates of manufacturers
- Select a manufacturer with staff and team
- Contact manufacturers and local contractors

REGULATORY SUPPORT/DUNE PERMITTING

- Confirm project objectives as identified by the Owner
- Draft dune permit application
- Coordinate with Shoreline Task Force
- Coordinate with TGLO
- Final coordination and receive permit authorization

A sufficient level of engineering and permitting design needs to be completed in order to generate drawings and quantities that must be submitted for the Shoreline Task Force/TGLO permit application(s). This would also include a plan and location for any conservation/mitigation measures.

Typical milestone activities/work products:

- » Field work (e.g. MHW/OHWM delineation, wetland delineation, etc.)
- » Exhibits (e.g. drawings, maps, figures, etc. for permit applications)
- » Submittals as client agent, if desired
- » Response to agencies/revisions
- » Public process/response to comments, if needed
- » Revision assistance based on reviews
- » Receipt of all state, and local permits, if desired

FINAL ENGINEERING AND PREPARATION OF CONSTRUCTION DOCUMENTS

- Confirm project objectives as identified by the Owner
- Check with manufacturer on cost
- Review project plans and specs
- Obtain Owner/stakeholder approval of plans



BID AND CONSTRUCTION PHASE SERVICES

- Assist the Owner to procure a qualified contractor
- Perform construction oversight (e.g. drawing and technical specification interpretation, site visits)
- Substantial completion tasks (e.g. inspection, punch list, etc.)

Typical milestone activities/work products:

- » Bid phase calendar and bid announcement
- » Pre-bid conference participation and documentation
- » Addenda and responses to Requests for Information
- » Participation in bid evaluation and selection process as directed by Owner
- » Coordination/correspondence with Owner and prospective contractor leading to contract execution
- » Construction kick-off meeting and documentation
- » Field notes taken from project oversight activities/construction progress reports
- » Disposition of contractor submittals, change order requests, and pay apps

PROJECT CLOSEOUT SERVICES

- Assist the Owner to ensure contractor completes all specified work
- Close out tasks (e.g. as-built drawings, final contractor submittals/invoices, final project management)

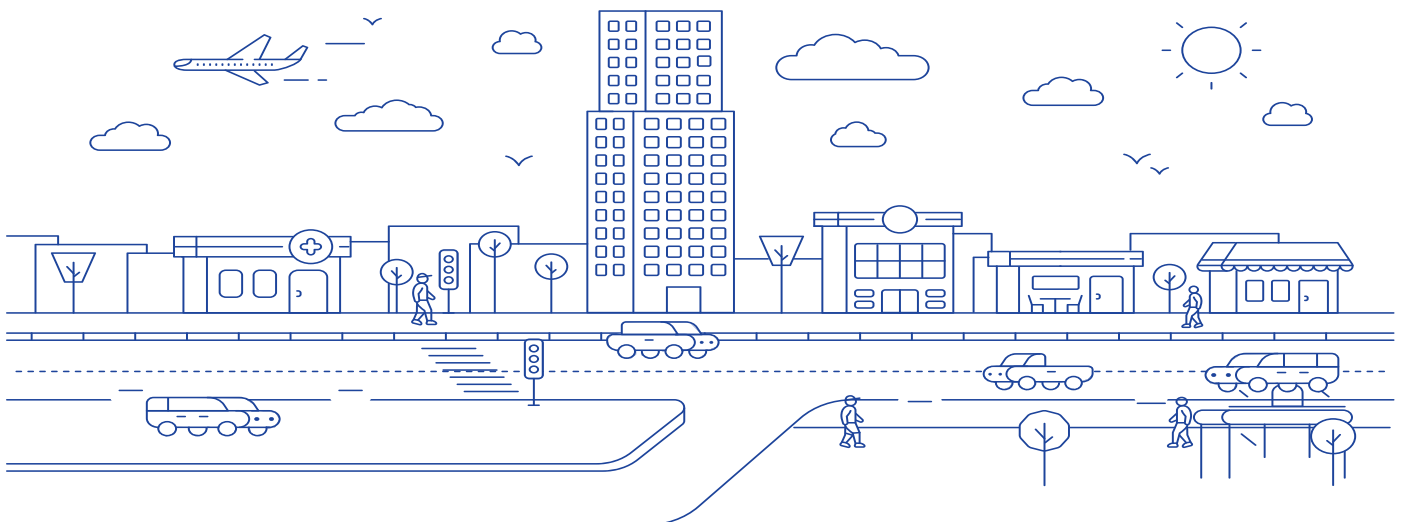
Typical milestone activities/work products:

- » Acceptance of contractor as-built drawings
- » Certificate of Substantial Completion/ Certificate of Construction Completion/Windstorm Certificate
- » Construction contract close-out documentation

QUALITY ASSURANCE/QUALITY CONTROL PROCESS





LJAs in-house procedures provide for a structured project management and quality assurance program from project initiation through final deliverables. Each project or task order commences with a project kick-off meeting to effectively communicate project goals, schedules, assignments, deliverables and expectations to each member of the project team. As projects advance, weekly internal meetings are held to track progress, address challenges, and update assignments to ensure continuity of progress and head off any potential stumbling blocks.

In addition to internal project team meetings, senior project managers meet regularly to review workloads of shared resources to ensure adequate staff are always available to each task of every project. For each project, LJA provides regularly scheduled updates and project specific progress reports to our clients. According to the schedule and preferences of the client, progress reports are typically delivered in progress meetings to allow the clients to comment and communicate any questions, concerns or changes they feel are needed in the most efficient and open manner possible.



QUALITY ASSURANCE

In specific terms, LJA assures unsurpassed project quality through our **TIME** process of four internal review steps:

-  **Team reviews** will be performed on an internal, on-going, peer review process within each discipline.
-  **Interdisciplinary reviews** will be performed across discipline by task leaders to ensure continuity of the final product through each facet of the project.
-  **Milestone reviews** will be performed by an independent team at each deliverable milestone to validate continuity across the entire project, evaluate constructibility, and validate construction budgets/schedules.
-  **Environmental compliance reviews** will provide assurance that all environmental commitments are met and permitting requirements are appropriately addressed in the project.

Tracking of plans routing through the internal review process will be maintained with a review stamp on plan sheets or by a transmittal cover sheet to document each reviewers' initials and date of comments or approval.

Upon completion of the internal **TIME** process, plans will be submitted to the client for their reviews. If any client review produces comments, a comment resolution meeting will occur to determine the best resolution and those decisions will be "red lined" in to the plans for modification. Proposed designs will then be updated per the red lined documents. Documentation of all reviews and the comments (both internal and by clients) will be retained by the QA/QC Manager.

The implementation of the **TIME** process is designed to ensure reviews are completed, comments addressed and a record of the process maintained. In addition to the Quality Assurance procedures, LJA incorporates Quality Control measures through our project Coordination Plan, Critical Path Scheduling, and Design Budget Monitoring procedures.

CRITICAL PATH SCHEDULE

A Critical Path Schedule (CPS) will be developed for every work authorization assigned by the client. The schedule will be created using Microsoft Project, an industry standard, resource loaded, critical path schedule software. The schedule will include all the steps from NTP through the final deliverables of the project.

DESIGN BUDGET MONITORING

To monitor progress and allow for schedule recovery to be implemented in a timely manner, a tracking system in LJA's InFocus software and backed-up with a Microsoft Excel spreadsheet will be used. This redundant system will ensure the process is followed closely. We track the progress of the assignment against the cumulative project expenditures to ensure that the project remains within the time and cost constraints established during the scope and fee process. The percent complete will be determined by assessing progress at the sub-task levels and calculating an overall percent complete for the project. The tasks will include any subconsultant tasks as well to ensure that the entire LJA Team is on-time and on-budget.

LJA's PMP, detailed communication and documentation protocols with the City, and tried and true QA/QC program have been used successfully on hundreds of projects over the years. All team members will be required to understand, sign, and use these processes.



PROPOSED PROJECT SCHEDULE

TASK	ESTIMATED DURATION OF ACTIVITY IN MONTHS											
	1	2	3	4	5	6	7	8	9	10	11	12
Project Management												
Data Collection												
Analysis of data/ Reporting												
Design Review (30%)												
Regulatory Coordination												
Design Review 90%												
Bid & Construction Phase Services												
Project Closeout												

We appreciate the opportunity to present our qualifications and look forward to bringing our experience and expertise to the City of South Padre Island.

LJA is positioned and ready to provide the professional environmental and engineering services that will move the City's projects forward.



COMMENTS ON STANDARD FORM AGREEMENT



I » COMMENTS ON STANDARD FORM AGREEMENT

EXCEPTIONS LIST TO THE CITY OF SOUTH PADRE ISLAND REQUEST FOR QUALIFICATIONS

1. Please modify Article X *Warranty, Indemnification & Release*, Section 10.05 as follows:

10.05 Indemnity. To the fullest extent permitted by law, the Consultant agrees to indemnify, defend, and hold harmless the City, Consultant agrees to indemnify and hold harmless the City, its Council members, officers, agents, employees and volunteers (separately and collectively referred to in this paragraph as "Indemnatee") from and against all claims, damages, losses and expenses including but not limited to **reasonable** attorneys' fees arising out of or resulting from any negligent act, error, omission, intentional tort or willful misconduct, intellectual property infringement or including failure to pay a subconsultant, subcontractor, or supplier pursuant to the agreement by Consultant, its employees, subcontractors, subconsultants, or others for whom Consultant may be legally liable ("Consultant Parties"), but only to the extent caused in whole or in part by the Consultant Parties. IF THE CLAIMS, ETC. ARE CAUSE IN PART BY CONSULTANT PARTIES, AND ALSO IN PART BY THE NEGLIGENCE OR WILLFUL MISCONDUCT OF ANY OR ALL OF THE INDEMNITEES OR ANY OTHER THIRD PARTY, THEN CONSULTANT SHALL ONLY INDEMNIFY ON A COMPARITIVE BASES, AND ONLY FOR THE AMOUNT FOR WHICH THE CONSULTANT PARTIES ARE FOUND LIABLE AND NOT FOR ANY AMOUNT FOR WHICH ANY OR ALL INDEMNITEES OR OTHER THIRD PARTIES ARE LIABLE. **THE DEFENSE OBLIGATION DOES NOT APPLY TO PROFESSIONAL LIABILITY OR WORKERS' COMPENSATION CLAIMS. AS IT RELATES TO SUCH CLAIMS, CONSULTANT SHALL BE LIABLE FOR REASONABLE DEFENSE COSTS INCURRED BY CITY, BUT ONLY AFTER FINAL ADJUDICATION AND ONLY TO THE EXTENT THAT CONSULTANT IS FOUND AT FAULT.**

Explanation: (1) The Texas Civil Practice And Remedies Code provides for the recovery of reasonable attorney's fees for rendered services. (2) LJA's professional liability and workers comp policies provide no defense of third parties, and therefore, regardless of whether Consultant is required to defend the City for professional negligence claims, we are not insured to provide such a defense. However, we can be liable for (and reimburse) those defense costs to the extent that we are liable.

2. Please modify Article X *Warranty, Indemnification & Release*, Section 10.06 as follows:

Release. The Consultant releases, relinquishes, and discharges the City, its Council members, officials, officers, agents, employees and volunteers from all claims, demands, and causes of action of every kind and character, including the cost of defense thereof, for any injury to, sickness or death of the Consultant or its employees and any loss of or damage to any property of the Consultant or its employees **to the extent that is** caused by or ~~alleged to be caused by,~~ **arising arises** out of, or is in connection with the Consultant's work to be performed hereunder. Both the City and the Consultant expressly intend that this release shall apply regardless of whether said claims, demands, and causes of action are covered, in whole or in part, by insurance, ~~and in the event of injury, sickness, death, loss, or damage suffered by the Consultant or its employees, but not otherwise, this release shall apply regardless of whether such loss, damage, injury, or death was caused in whole or in part by the City, any other party released hereunder, the Consultant, or any third party.~~

Explanation: (1) We are insured to be responsible for negligent acts or omissions to the extent of our fault in accordance with the law and the text should clearly identify that the release pertains to the Consultant's services. (2) The original text would have LJA release the client for the client's own negligence. Such provisions are void and unenforceable under State law.

3. Please add the following information for the Consultant in Article XIV *Miscellaneous Terms*, Section 14.02:

Consultant:

LJA Engineering, Inc.



Attn: Doug Dusini
3600 W Sam Houston Pkwy S, Suite 600
Houston, Texas 77042

EXCEPTIONS LIST TO EXHIBIT C
INSURANCE REQUIREMENTS

1. Please modify Section III *General Requirements Applicable to All Policies*, subpart D as follows:

Coverage shall not be ~~suspended, voided~~, canceled, or not renewed ~~reduced in coverage or in limits~~ except after thirty (30) calendar days prior written notice has been given to the City of South Padre Island.

Explanation: Certificates of insurance can provide for notification in the event of cancellation, non-renewal, and cancellation for non-payment. There is no such notice of suspension, voided, or reduced in coverage or in limits.

2. Please modify Section VII *Professional Liability requirements*, subpart B as follows:

Minimum of \$1,000,000 per claim and \$2,000,000 aggregate, with a maximum deductible of \$400,000.00 ~~100,000.00~~.

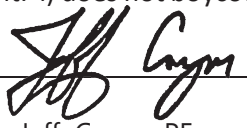
Explanation: LJA's current professional liability policy deductible is \$400,000, which is the industry norm for firms of our size. The insurance industry is constantly shifting and LJA cannot guarantee that the deductible for this specific policy will not be impacted because of changes in the market. Also, a deductible obligation is between the insured and the insurance company, and any failure to meet a deductible would not "stop" the insurer from paying a claim, but would simply reduce the limits available.



CERTIFICATION FORM/LITIGATION »

CERTIFICATION and ACKNOWLEDGMENT

The undersigned affirms that they are duly authorized to submit this Proposal, that this Proposal has not been prepared in collusion with any other Respondent, and that the contents of this Proposal have not been communicated to any other Respondent prior to the official opening. To the extent this Contract is considered a Contract for goods or services subject to § 2270.002 Texas Government Code, Respondent certifies that it: i) does not boycott Israel; and ii) will not boycott Israel during the term of the Agreement.

Signed By:  Title: Vice President

Typed Name: Jeff Coym, PE Company Name: LJA Engineering, Inc.

Phone No.: 361.991.8550 Fax No.: 361.993.7569

Email: jcoym@lja.com

Bid Address: 5350 South Staples St, Suite 425 Corpus Christi TX 78411
P.O. Box or Street City State Zip

Order Address: 5350 South Staples St, Suite 425 Corpus Christi TX 78411
P.O. Box or Street City State Zip

Remit Address: 5350 South Staples St, Suite 425 Corpus Christi TX 78411
P.O. Box or Street City State Zip

Federal Tax ID No.: 76-0540328

DUNS No.: 025475513

Date: 10/28/2021

DISCLOSURE OF PENDING LITIGATION

In response to section N. Disclosure of Pending Litigation in the Standard Terms and Conditions of the RFQ, LJA does not have any material civil or criminal litigation or pending investigation which involves the Respondent or which the Respondent has been judged guilty.