

**NOTICE OF REGULAR MEETING
CITY OF SOUTH PADRE ISLAND
CITY COUNCIL MEETING**

NOTICE IS HEREBY GIVEN THAT THE CITY COUNCIL OF THE CITY OF SOUTH PADRE ISLAND, TEXAS, WILL HOLD A REGULAR MEETING ON:

WEDNESDAY, AUGUST 4, 2010

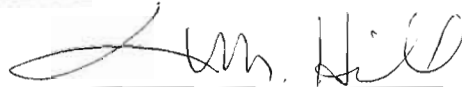
5:30 P.M. AT THE MUNICIPAL BUILDING,
JOYCE H. ADAMS BOARD ROOM, 2ND FLOOR
4601 PADRE BOULEVARD, SOUTH PADRE ISLAND, TEXAS

1. Call to order
2. Pledge of Allegiance
3. Public Comments and Announcements: *This is an opportunity for citizens to speak to Council relating to agenda or non-agenda items. Speakers are required to address Council at the podium and give their name before addressing their concerns. [Note: State law will not permit the City Council to discuss, debate or consider items that are not on the agenda. Citizen comments may be referred to City Staff or may be placed on the agenda of a future City Council meeting]*
4. Presentations and Proclamations:
 - a. Proclamation: Native Plant of the Month for August 2010: Scarlet Pea (Scientific name: Indigofera miniata)
 - b. Proclamation: Children's Book of the Month for August 2010: *I Stink* by Kate and Jim McMullan
5. Approve Consent Agenda:
 - a. Approve minutes of July 21, 2010 Workshop and Regular meeting. (Hill)
 - b. Approve invoices for payment. (Homan)
 - c. Approve Tax Collection and Adjustment Report for taxes collected for the month of June 2010 by the Point Isabel Independent School District Tax Office. (Homan)
 - d. Discussion and action to approve budget amendment in the amount of \$30,000 for a grant that was approved January 20, 2010 with the Lower Rio Grande Valley Development Council for a Regional Solid Waste Grants Program in which the City of South Padre Island wishes to purchase two recycling trailers. (Baldovinos)
6. Presentation by Marie Garrett, Coastal Solutions regarding the Beach Stabilization Demonstration Project. (Clarke)
7. Discussion and action to authorize the City Manager to execute agreements with various property owners to provide temporary parking lots during the months of August and September 2010 and the "summer months" for 2011. (Jones)
8. Discussion and action to approve the formation of a *SPI Wall of Honor* and to approve the appointment of a Steering Committee who will evaluate proposed applicants and be responsible for financing, fund raising, public relations and site preparation. (Ridolfi)

9. Discussion and action to enter into an agreement with HillCo Partners for government consulting services for one year beginning August 15, 2010 in the amount of \$144,000 plus expenses with 50% to be paid by the City's General Fund, 25% to be paid by the Hotel Motel Tax Fund and 25% to be paid by EDC. (Clarke)
10. Discussion and action to award bid for purchase and installation of two used 300 ton Trane screw chillers for \$145,000 plus option to purchase extended warranty and/or service contract. (Quandt)
11. Discussion and action on a Beachfront Construction Certificate and Dune Protection Permit for Mejia & Rose, Inc. for the construction of a five story condominium with amenities at 2400 Gulf Boulevard. (Trevino)
12. Discussion and action to accept award of Transportation State Contract in the amount of \$425,483 to be used for administrative, operating, preventive maintenance and capital costs related to the WAVE. (Vasquez/Arriaga)
13. Discussion, comments and guidance from the City Council regarding the proposed 2010-11 Fiscal Year Budget. (Clarke/Homan)
14. Discussion, comments and guidance from the City Council regarding calling a Special Election to be held on November 2, 2010 for the purpose of issuing bonds for constructing and equipping a new Fire Station. (Clarke)
15. EXECUTIVE SESSION: PURSUANT TO SECTIONS 551.071, CONSULTATION WITH ATTORNEY; 551.072, DELIBERATIONS ABOUT REAL PROPERTY; TO DISCUSS:
 - a. Consultation with Attorney, deliberation regarding the value and possible acquisition and/or sale of real property.
16. Discussion and action regarding the value and possible acquisition and/or sale of real property.
17. Adjourn.

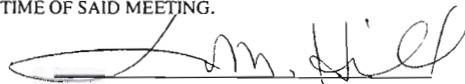
WE RESERVE THE RIGHT TO GO INTO EXECUTIVE SESSION REGARDING ANY OF THE ITEMS POSTED ON THIS AGENDA, PURSUANT TO SECTIONS 551.071, CONSULTATION WITH ATTORNEY; 551.072, DELIBERATIONS ABOUT REAL PROPERTY; 551.073, DELIBERATIONS ABOUT GIFTS & DONATIONS; 551.074, PERSONNEL MATTERS; 551.076, DELIBERATIONS ABOUT SECURITY DEVICES; AND/OR 551.086, DISCUSS (A) COMMERCIAL OR FINANCIAL INFORMATION RECEIVED FROM A BUSINESS PROSPECT WITH WHICH THE CITY IS CONDUCTING NEGOTIATIONS, OR (B) FINANCIAL OR OTHER INCENTIVES TO THE BUSINESS PROJECT.

DATED THIS THE 30TH DAY OF JULY 2010



Susan M. Hill, City Secretary

I, THE UNDERSIGNED AUTHORITY, DO HEREBY CERTIFY THAT THE ABOVE NOTICE OF MEETING OF THE GOVERNING BODY OF THE CITY OF SOUTH PADRE ISLAND, TEXAS IS A TRUE AND CORRECT COPY OF SAID NOTICE AND THAT I POSTED A TRUE AND CORRECT COPY OF SAID NOTICE ON THE BULLETIN BOARD AT CITY HALL/MUNICIPAL BUILDING ON JULY 30, 2010, AT/OR BEFORE 5:00 P.M. AND REMAINED SO POSTED CONTINUOUSLY FOR AT LEAST 72 HOURS PRECEDING THE SCHEDULED TIME OF SAID MEETING.

Susan M. Hill, City Secretary

THIS FACILITY IS WHEELCHAIR ACCESSIBLE, AND ACCESSIBLE PARKING SPACES ARE AVAILABLE. REQUESTS FOR ACCOMMODATIONS OR INTERPRETIVE SERVICES MUST BE MADE 48 HOURS PRIOR TO THIS MEETING. PLEASE CONTACT BUILDING OFFICIAL, JAY MITCHIM; ADA DESIGNATED RESPONSIBLE PARTY AT (956) 761-1025.

**CITY COUNCIL MEETING
CITY OF SOUTH PADRE ISLAND
CONSENT AGENDA**

MEETING DATE: August 4, 2010

ITEM DESCRIPTION

NOTE: All matters listed under Consent Agenda are considered routine by the Town of South Padre Island Board of Aldermen and will be enacted by one motion. There will not be separate discussion of these items. If discussion is desired, that item will be removed from the Consent Agenda and considered separately.

Items to be considered are:

- a. Approve minutes of July 21, 2010 Workshop and Regular meeting. (Hill)
- b. Approve invoices for payment. (Homan)
- c. Approve Tax Collection and Adjustment Report for taxes collected for the month of June 2010 by the Point Isabel Independent School District Tax Office. (Homan)
- d. Discussion and action to approve budget amendment in the amount of \$30,000 for a grant that was approved January 20, 2010 with the Lower Rio Grande Valley Development Council for a Regional Solid Waste Grants Program in which the City of South Padre Island wishes to purchase two recycling trailers. (Baldovinos)

RECOMMENDATIONS/COMMENTS

Approve Consent Agenda

COUNCIL ACTION

Motion: _____

Second: _____

Vote: Ayes: _____ Nays: _____

Abstentions: _____

**CITY OF SOUTH PADRE ISLAND
CITY COUNCIL MEETING
AGENDA REQUEST FORM**

MEETING DATE: August 4, 2010

NAME/DEPT.: Susan Hill, City Secretary

ITEM

Approval of minutes for July 21, 2010 Workshop and Regular meeting.

ITEM BACKGROUND

RECOMMENDATIONS/COMMENTS

BUDGET/FINANCIAL SUMMARY

COMPREHENSIVE PLAN GOAL

COUNCIL ACTION

Motion: _____

Second: _____

Vote: Ayes: _____ **Nays:** _____

Abstentions: _____

<p style="text-align: center;">MINUTES CITY OF SOUTH PADRE ISLAND CITY COUNCIL WORKSHOP</p>
--

WEDNESDAY JULY 21, 2010

I. CALL TO ORDER

The City Council held a Workshop on Wednesday, July 21, 2010 at the Municipal Complex Building, Joyce H. Adams Board Room, 2nd Floor, 4601 Padre Boulevard, South Padre Island, Texas. Mayor Pinkerton called the workshop to order at 1:00 p.m. Those present were Council Members JoAnn Evans, Courtney Hayden, Sam A. Listi, Rick Ridolfi and Alita Bagley

City staff members present were City Manager Joni Clarke, Assistant City Manager Darla A. Jones, CVB Executive Director Dan Quandt, Fire Chief Burney Baskett, Public Works Director Scott Fry, Finance Director Larry Homan, Police Chief Randy Smith, Transit & Development Director Rick Vasquez, Information Services Director Tim Howell, Administrative Services Director Wendi Delgado, Environmental Health Services Director Victor Baldovinos and City Secretary Susan Hill.

II. PLEDGE OF ALLEGIANCE.

Mayor Pinkerton led the Pledge of Allegiance.

III. PUBLIC COMMENTS AND ANNOUNCEMENTS.

IV. DISCUSSION ON DRAFT BUDGET FOR FY 2010/11.

- a. BUDGET APPROACH FOR FY 2010/11**
- b. REVIEW OF BUDGET CALENDAR**
- c. REVENUE PROJECTIONS FOR FISCAL YEAR 2010/11,
INCLUDING EVALUATION OF CURRENT FEE STRUCTURE**
- d. TAX RATE**
- e. STRATEGIES FOR FUNDING CAPITAL PROJECTS**
- f. REVIEW OF EXPENDITURES BY FUND**

City Manager Joni Clarke went through the draft budget highlighting additions or deletions that were factored into the budget. Ms. Clarke stated that this is working document and welcomed discussion and guidance from the Council.

V. DISCUSSION AND REVIEW WITH CLINT SMITH OF HILLCO PARTNERS REGARDING THE 2011/12 LEGISLATIVE AGENDA AND ACTION ITEMS.

- a. OVERVIEW OF CURRENT LANDSCAPE AND POLITICAL CLIMATE IN THE STATE OF TEXAS**
- b. REVIEW OF THE 2009 LEGISLATIVE AGENDA**
- c. CREATION OF THE 2011/12 LEGISLATIVE AGENDA AND ACTION ITEMS FOR THE CITY OF SOUTH PADRE ISLAND**

Clint Smith gave a brief overview of the political landscape in Austin, reviewed the 2009 Legislative agenda and went over new items for the 2011 Legislative agenda, which included:

- Water supply
- Drainage
- Disaster Funding
- Second Causeway
- Annexation
- Regional EOC
- CEPRA Grant
- CIAP Grant
- Coastal Management Plan
- Eight Liners
- Beach Access, Easement and Platting
- Funding for Litter Control on Causeway
- Tomkins Channel
- May Election Day change

VI. ADJOURN.

There being no further business, Mayor Pro-tem Evans adjourned the meeting at 4:51 p.m. (Mayor Pinkerton stepped out momentarily).

Susan M. Hill, City Secretary

APPROVED:

Robert N. Pinkerton, Jr., Mayor

**MINUTES
CITY OF SOUTH PADRE ISLAND
CITY COUNCIL MEETING**

WEDNESDAY, JULY 21, 2010

I. CALL TO ORDER

The City Council Members of the City of South Padre Island, Texas held a Regular Meeting on Wednesday, July 21, 2010 at the Municipal Complex Building, 2nd Floor, 4601 Padre Boulevard, South Padre Island, Texas. Mayor Pinkerton called the meeting to order at 5:30 p.m. A full quorum was present: Council Member JoAnn Evans, Courtney Hayden, Sam A. Listi, Rick Ridolfi and Alita Bagley.

City staff members present were City Attorney Paul Cunningham, City Manager Joni Clarke, Assistant City Manager Darla Jones, CVB Executive Director Dan Quandt, Fire Chief Burney Baskett, Public Works Director Scott Fry, Finance Director Larry Homan, Police Chief Randy Smith, Transit & Development Director Rick Vasquez, Information Services Director Tim Howell, Administrative Services Director Wendi Delgado, Environmental Health Services Director Victor Baldovinos and City Secretary Susan Hill.

II. PLEDGE OF ALLEGIANCE

Mayor Pinkerton led the Pledge of Allegiance.

III. PUBLIC COMMENTS AND ANNOUNCEMENTS:

IV. PRESENTATIONS AND PROCLAMATIONS:

Proclamation was read by Mayor Robert N. Pinkerton, Jr., City of South Padre Island and Mayor Joe E. Vega, City of Port Isabel honoring Carl Phillips for his service to the Lower Laguna Madre area as evidenced in his writing of various events in this area over many years.

V. APPROVE CONSENT AGENDA:

Council Member Ridolfi made a motion, seconded by Council Member Listi to approve the Consent agenda. Motion passed unanimously.

A. APPROVE MINUTES OF JULY 7, 2010 REGULAR MEETING AND WORKSHOPS (2) OF JULY 14, 2010. (HILL)

B. APPROVE INVOICES FOR PAYMENT. (HOMAN)

Invoices approved for payment were paid by General Fund checks numbered 117292 through 117441 for a total amount of \$585,342.39.

C. APPROVE SECOND AND FINAL READING OF ORDINANCE NO. 10-25 APPROVING AMENDMENTS TO THE PLANNED DEVELOPMENT DISTRICT STANDARDS, SPECIFICATIONS AND ZONING FOR THE SHORES SUBDIVISION OF SOUTH PADRE ISLAND. (VASQUEZ)

A true and correct copy of said Ordinance was placed in the City's Ordinance Book and entitled Ordinance No. 10-25, and, by reference hereto, included in these minutes as if fully set out and spread upon the pages of the Minutes Book.

VI. DISCUSSION AND ACTION ON THE GOALS, OBJECTIVES, PROJECTS AND GUIDANCE OF THE DRAFT FISCAL YEAR 2010/11 BUDGET. (CLARKE)

Council Member Evans made a motion to acknowledge receipt of draft budget as submitted by the City Manager in order to be in compliance with the City's Home Rule Charter. Motion was seconded by Council Member Hayden. Motion carried unanimously.

VII. DISCUSSION AND ACTION TO DIRECT CITY STAFF TO DEVELOP PLANS AND SPECIFICATIONS FOR MAINTENANCE DREDGING OF THE TOMPKINS CHANNEL AND TO UTILIZE FUNDS FROM THE CONSTRUCTION LINE ITEM OF THE BAY ACCESS FUND (61) FOR THAT PURPOSE. (BATE/FRY)

Council Member Hayden made a motion to allow City staff to develop plans and specifications for maintenance dredging of the Tomkins Channel. Motion was seconded by Council Member Evans, which passed unanimously.

VIII. DISCUSSION AND ACTION TO DIRECT CITY STAFF TO DEVELOP PLANS, RECEIVE QUOTES, AND EXECUTE A CONTRACT FOR REPAIRS TO THE PALM STREET BOAT RAMP. (BATE/FRY)

Council Member Bagley made a motion, seconded by Council Member Evans to approve the development of plans and execution of contract for the Palm Street Boat Ramp repairs. Motion carried unanimously.

IX. DISCUSSION AND ACTION TO ACCEPT APPOINTMENTS TO THE NEWLY CREATED CITIZENS FINANCIAL ADVISORY COMMITTEE FOR THE NEW FIRE STATION TO ADVISE THE COUNCIL ON ALTERNATIVES AND PREFERRED FINANCIAL ACTIONS FOR THE FIRE STATION COMPLEX AND PRESENT TO COUNCIL WITHIN 30 DAYS. (CITY COUNCIL)

Council Member Evans made a motion, seconded by Council Member Hayden to appoint the following to the Citizens Financial Advisory Committee. Motion passed unanimously.

Patrick McNulty
Teresa Metty
Connie Mitchell

Gary Olle
Charles Rogan
Doyle Wells

Mayor Pinkerton appointed Charles Rogan as Chairman.

X. DISCUSSION AND ACTION ON SUBMITTED PROPOSALS TO PROVIDE A COST ESTIMATION FOR THE CONSTRUCTION OF A FIRE STATION IN ACCORDANCE TO SPECIFICATIONS PROVIDED BY THE CITY'S SELECTED ARCHITECTURAL FIRM BRW. (BASKETT)

Council Member Ridolfi made a motion to award the cost estimation for the construction of a Fire Station to SpawGlass, who was the sole proposal received. Motion was seconded by Council Member Listi, which carried unanimously.

XI. APPROVE SECOND AND FINAL READING OF ORDINANCE NO. 10-22 AMENDING CHAPTER 18 OF THE CODE OF ORDINANCES TO ADD A NEW SECTION 18-19.2 TO PROHIBIT OVERNIGHT PARKING IN OR ON A CUL-DE-SAC EAST OF THE EAST RIGHT-OF-WAY LINE OF GULF BOULEVARD. (EVANS)

Council Member Evans made a motion to approve the Second and Final Reading of Version III of Ordinance No. 10-22. Motion was seconded by Council Member Hayden. Motion passed unanimously. Council Member Evans did state that this Ordinance will not go into effect until the GLO has approved the amendment to our Beach and Dune Plan.

A true and correct copy of said Ordinance was placed in the City's Ordinance Book and entitled Ordinance No. 10-22, and, by reference hereto, included in these minutes as if fully set out and spread upon the pages of the Minutes Book.

XII. DISCUSSION AND ACTION ON AMENDMENT TO GATEWAY PROFESSIONAL SERVICES CONTRACT, SCHEDULE I TO ADD TASK 10, PREPARATION OF TIGER II DISCRETIONARY PRELIMINARY AND FINAL GRANT APPLICATION AND INCREASING PROJECT BUDGET \$25,000; TRANSFERRING \$25,000 FROM THE PUBLIC WORKS STREET MAINTENANCE FUND TO THE TRANSPORTATION AND DEVELOPMENT SERVICE BUDGET (514-0530 – PROFESSIONAL SERVICES). (VASQUEZ)

Council Member Listi made a motion to approve the amendment to the Gateway Contract and transfer of \$25,000 from the Public Works Street Maintenance Fund to the Transportation and Development Service Budget. Motion was seconded by Council Member Bagley, which carried unanimously.

XIII. DISCUSSION AND ACTION TO AUTHORIZE THE CITY MANAGER TO EXECUTE AN AGREEMENT WITH RENE BATES AUCTIONEERS, INC. TO PROVIDE ONLINE AUCTION SERVICES. (JONES)

Council Member Sam Listi made a motion to authorize the City Manger to execute an agreement with Rene Bates Auctioneers to provide online auction services. Motion was seconded by Council Member Hayden. Motion passed unanimously.

XIV. DISCUSSION AND ACTION TO ALLOW THE CITY MANGER PERMISSION TO SIGN A SYSTEM AGREEMENT WITH TYLER TECHNOLOGIES ADDING THE INCODE COURT ONLINE MODULE TO THE CURRENT SOFTWARE SYSTEM USED BY THE CITY. THE COST RELATED TO THIS ITEM IS \$2,900 THE FIRST YEAR AND \$2,100 EVERY YEAR AFTER WHICH WILL BE PAID FROM THE COURT TECHNOLOGY FUND AND TO ALLOW THE CITY MANAGER TO SIGN AN AGREEMENT WITH ETS (ELECTRONIC TRANSACTION SYSTEMS CORPORATION) FOR CREDIT CARD PROCESSING SERVICES. (DELGADO)

a. ALLOW CITY MANAGER TO SIGN A SYSTEM AGREEMENT WITH TYLER TECHNOLOGIES ADDING THE INCODE COURT ONLINE MODULE IN THE AMOUNT OF \$2,900.

Mayor Pinkerton made a motion, seconded by Council Member Evans to allow the City Manager to sign an agreement with Tyler Technologies for the Court Online Module. Motion passed unanimously.

b. ALLOW CITY MANAGER TO SIGN AN AGREEMENT WITH ETS (ELECTRONIC TRANSACTION SYSTEMS CORPORATION) FOR CREDIT CARD PROCESSING SERVICES.

Mayor Pinkerton made a motion, seconded by Council Member Evans to allow the City Manager to sign an agreement with ETS for credit card processing services. Motion passed unanimously

XV. DISCUSSION AND ACTION TO ALLOW THE CITY MANAGER TO SIGN AN INTERLOCAL COOPERATION CONTRACT WITH THE TEXAS DEPARTMENT OF PUBLIC SAFETY WHICH WILL ALLOW THE CITY TO PROVIDE INFORMATION NECESSARY TO DENY RENEWAL OF THE DRIVER LICENSE OF A PERSON WHO FAILS TO APPEAR FOR A COMPLAINT OR CITATION OR FAILS TO PAY OR SATISFY A JUDGMENT ORDERING PAYMENT OF A FINE AND COST IN THE MANNER ORDERED BY THE COURT IN A MATTER INVOLVING ANY OFFENSE THAT A COURT HAS JURISDICTION OF UNDER CHAPTER 4, CODE OF CRIMINAL PROCEDURE. (DELGADO)

Mayor Pinkerton made a motion to allow the City Manager to sign an Interlocal Cooperation contract with Texas Dept. of Public Safety to allow the City to provide

information to deny renewal of the Driver License of a person who fails to appear for a complaint, citation or fails to pay. Motion was seconded by Council Member Evans, which carried unanimously.

XVI. DISCUSSION AND ACTION TO APPROVE AMENDMENT TO THE TOWN OF SOUTH PADRE ISLAND EMPLOYEE HANDBOOK SECTION 25.0 EDUCATIONAL ASSISTANCE POLICY TO CREATE A \$2500 CAP ON THE AMOUNT OF EDUCATIONAL ASSISTANCE AN EMPLOYEE MAY BE REIMBURSED DURING A FISCAL YEAR. THE CURRENT POLICY HAS NO MAXIMUM AMOUNT LISTED. (DELGADO)

Council Member Ridolfi made a motion to approve proposed amendment to Section 25.0 Educational Assistance Policy with the amendment to Section 25.0-B-6 striking "designee" and replacing with "Assistant City Manager". Motion was seconded by Council Member Hayden. Motion passed unanimously.

XVII. EXECUTIVE SESSION: PURSUANT TO SECTIONS 551.071, CONSULTATION WITH ATTORNEY; 551.074, PERSONNEL MATTERS; 551.072, DELIBERATIONS ABOUT REAL PROPERTY; TO DISCUSS:

Mayor Pinkerton announced that Item b will be pulled from the agenda.

- a. **CONSULTATION WITH ATTORNEY, DELIBERATION REGARDING APPEAL AND MEDIATED SETTLEMENT OF A RECENTLY TERMINATED CITY EMPLOYEE.**
- b. **CONSULTATION WITH ATTORNEY, DELIBERATION REGARDING THE VALUE AND POSSIBLE ACQUISITION AND/OR SALE OF REAL PROPERTY.**

At 6:30 p.m., Council Member Evans made a motion, seconded by Council Member Hayden to go into Executive Session. Motion carried unanimously

At 6:50 p.m., the Council reconvened into Open Session.

XVIII. DISCUSSION AND ACTION REGARDING THE APPEAL AND MEDIATED SETTLEMENT OF A RECENTLY TERMINATED CITY EMPLOYEE.

Council Member Evans made a motion to approve the mediated settlement; motion was seconded by Council Member Ridolfi. Motion carried unanimously.

XIX. DISCUSSION AND ACTION REGARDING THE VALUE AND POSSIBLE ACQUISITION AND/OR SALE OF REAL PROPERTY.

This item was pulled from the Executive Session agenda – no action.

XX. ADJOURN.

There being no further business, Mayor Pinkerton adjourned the meeting at 6:51 p.m.

Susan M. Hill, City Secretary

APPROVED

Robert N. Pinkerton, Jr., Mayor

DRAFT

**CITY OF SOUTH PADRE ISLAND
CITY COUNCIL MEETING
AGENDA REQUEST FORM**

MEETING DATE: August 4, 2010

NAME/DEPT.: Larry Homan, Finance Director

ITEM

Approve invoices for payment by General Fund checks numbered 117442 through 117612 for a total of \$649,129.53.

ITEM BACKGROUND

RECOMMENDATIONS/COMMENTS

BUDGET/FINANCIAL SUMMARY

COMPREHENSIVE PLAN GOAL

COUNCIL ACTION

Motion: _____

Second: _____

Vote: Ayes: _____ **Nays:** _____

Abstentions: _____

KEY: 06713 Regular Payments JULY 21,2010

IDOR SET: 01

ID : 01 GENERAL FUND

DEPARTMENT: N/A NON-DEPARTMENTAL

BANK: OPER

BUDGET TO USE: CB-CURRENT BUDGET

IDOR	NAME	ITEM #	G/L ACCOUNT NAME	DESCRIPTION	CHECK#	AMOUNT
=====						
001297	AMERICAN FUNDS					
		I-72110	01 -2485	AMERICAN GENE EMPLOYEE SALARY ALLOC 7/16/1	117442	83.08
002434	CINDY BOUDLOCHE, TRUSTE					
		I-DW1201007192626	01 -2469	DEBTORS WAGE CASE NO. 10-10265-B-13	117443	1,142.31
		I-DW5201007192626	01 -2469	DEBTORS WAGE A/N 07-10758-B-13	117444	662.30
		I-DW9201007192626	01 -2469	DEBTORS WAGE CASE NO 10-10137-B-13	117445	478.85
003185	OFFICE OF THE ATTY GENL					
		I-C09201007192626	01 -2473	CHILD SUPPORT A/N 0010486563	117446	212.31
		I-C10201007192626	01 -2473	CHILD SUPPORT A/N 2004094864B	117447	282.92
		I-C14201007192626	01 -2473	CHILD SUPPORT A/N N002589726	117448	100.00
		I-C24201007192626	01 -2473	CHILD SUPPORT A/N 0011488748	117449	451.38
		I-C31201007192626	01 -2473	CHILD SUPPORT A/N 0011545222	117450	161.54
		I-C32201007192626	01 -2473	CHILD SUPPORT A/N 2007031654D	117451	169.18
		I-C37201007192626	01 -2473	CHILD SUPPORT A/N 2008-10-5941-D	117452	492.46
		I-C47201007192626	01 -2473	CHILD SUPPORT CASE # 0009943810	117453	141.68
		I-C48201007192626	01 -2473	CHILD SUPPORT NO. 2008-08-4758-H	117454	383.08
		I-C49201007192626	01 -2473	CHILD SUPPORT 0009648707	117455	165.69
		I-C50201007192626	01 -2473	CHILD SUPPORT AG CASE #0011346896	117456	634.62
006163	AMERICAN GENERAL LIFE I					
		I-72110	01 -2485	AMERICAN GENE EMPLOYEE SALARY ALLOC 7/21/10	117458	528.78
007001	ANA GARZA					
		I-C04201007192626	01 -2473	CHILD SUPPORT A/N 2003-03-1480-B	117460	194.88
009097	INTERNAL REVENUE SERVIC					
		I-IR6201007192626	01 -2459	IRS LEVY A/N XXX-XX-1603	117462	383.00
012108	HERMELINDA LONGORIA					
		I-C16201007192626	01 -2473	CHILD SUPPORT A/N 2002031289D	117464	146.77
016686	PUTNAM INVESTMENTS					
		I-72110	01 -2485	AMERICAN GENE EMPLOYEE SALARY ALLOC 7/21/10	117467	62.15
019222	S.P.I. FIREFIGHTERS ASS					
		I-72110	01 -2472	FIREFIGHTERS ASSOCIATION DUES 7/21/10	117471	221.00
019327	SOUTH PADRE ISLAND PROF					
		I-72110	01 -2487	POLICE DEPT A ASSOCIATION DUES 7/21/10	117472	360.00
019997	TG					
		I-DX1201007192626	01 -2469	DEBTORS WAGE CS239406800	117474	153.04
020615	TOWN OF SOUTH PADRE ISL					
		I-072110	01 -2479	EMPLOYEE ACTI PAYROLL DATE 6/23/10	117475	132.00
		I-072110	01 -2479	EMPLOYEE ACTI PAYROLL DATE 7/07/10	117475	132.00
		I-072110	01 -2479	EMPLOYEE ACTI PAYROLL DATE 7/21/10	117475	132.00

7/21/2010 3:39 PM

REGULAR DEPARTMENT PAYMENT REGISTER

PAGE: 2

PACKET: 06713 Regular Payments JULY 21, 2010

VENDOR SET: 01

FUND : 01 GENERAL FUND

DEPARTMENT: N/A NON-DEPARTMENTAL

BANK: OPER

BUDGET TO USE: CB-CURRENT BUDGET

VENDOR	NAME	ITEM #	G/L ACCOUNT NAME	DESCRIPTION	CHECK#	AMOUNT
=====						
01-021109	UNITED WAY OF S. CAMERO					
	I-72110	01 -2468	UNITED WAY	EMPLOYEE DONATIONS 7/21/10	117477	228.50
01-023200	MICHELLE WILBURN					
	I-C21201007192626	01 -2473	CHILD SUPPORT A/N 0011549506		117480	146.31
			DEPARTMENT	NON-DEPARTMENTAL	TOTAL:	8,381.83

7/21/2010 3:39 PM

REGULAR DEPARTMENT PAYMENT REGISTER

PAGE: 3

PACKET: 06713 Regular Payments JULY 21, 2010

VENDOR SET: 01

FUND : 01 GENERAL FUND

DEPARTMENT: 512 CITY ADMINISTRATION

BANK: OPER

BUDGET TO USE: CB-CURRENT BUDGET

VENDOR	NAME	ITEM #	G/L ACCOUNT NAME	DESCRIPTION	CHECK#	AMOUNT

01-003681	JONI CLARKE					
		I-062710	01 -512-0550	TRAVEL EXPENS MEAL REIMBURSEMENT	117457	10.80
01-013166	MINERVA E. LOPEZ					
		I-071710	01 -512-0550	TRAVEL EXPENS MILEAGE REIMBURSEMENT	117465	120.56
DEPARTMENT 512 CITY ADMINISTRATION					TOTAL:	131.36

7/21/2010 3:39 PM

REGULAR DEPARTMENT PAYMENT REGISTER

PAGE: 4

PACKET: 06713 Regular Payments JULY 21, 2010

VENDOR SET: 01

FUND : 01 GENERAL FUND

DEPARTMENT: 513 FINANCE DEPARTMENT

BANK: OPER

BUDGET TO USE: CB-CURRENT BUDGET

VENDOR	NAME	ITEM #	G/L ACCOUNT NAME	DESCRIPTION	CHECK#	AMOUNT
01-019641	STAPLES	CREDIT PLAN				
		I-20481	01 -513-0101	OFFICE SUPPLI POST ITS, 2PLY REG.TAPE, REFIL 117473		47.47
			DEPARTMENT 513	FINANCE DEPARTMENT	TOTAL:	47.47

7/21/2010 3:39 PM

REGULAR DEPARTMENT PAYMENT REGISTER

PAGE: 5

PACKET: 06713 Regular Payments JULY 21,2010

VENDOR SET: 01

FUND : 01 GENERAL FUND

DEPARTMENT: 514 PLANNING DEPARTMENT

BANK: OPER

BUDGET TO USE: CB-CURRENT BUDGET

VENDOR	NAME	ITEM #	G/L ACCOUNT NAME	DESCRIPTION	CHECK#	AMOUNT
=====						
01-021231	GATEWAY PLANNING GROUP					
		I-63010	01 -514-0530	PROFESSIONAL SPI FBC INITIATIVE	117478	218,189.56
DEPARTMENT 514 PLANNING DEPARTMENT TOTAL:						218,189.56

7/21/2010 3:39 PM

REGULAR DEPARTMENT PAYMENT REGISTER

PAGE: 6

PACKET: 06713 Regular Payments JULY 21, 2010

VENDOR SET: 01

FUND : 01 GENERAL FUND

DEPARTMENT: 540 FLEET MANAGEMENT

BANK: OPER

BUDGET TO USE: CB-CURRENT BUDGET

VENDOR	NAME	ITEM #	G/L ACCOUNT NAME	DESCRIPTION	CHECK#	AMOUNT
=====						
01-006241	FUELMAN					
		I-NP25625073	01 -540-0104-01	FUEL & LUBRIC FUEL PURCHASED JUNE 1 -30,2010	117459	6,254.64
		I-NP25625073	01 -540-0104-01	FUEL & LUBRIC FUEL PURCHASED JUNE 1 -30,2010	117459	2,261.27
		I-NP25625073	01 -540-0104-03	FUEL & LUBRIC FUEL PURCHASED JUNE 1 -30,2010	117459	2,326.20
		I-NP25625073	01 -540-0104-04	FUEL & LUBRIC FUEL PURCHASED JUNE 1 -30,2010	117459	1,242.81
DEPARTMENT 540 FLEET MANAGEMENT					TOTAL:	12,084.92
=====						

7/21/2010 3:39 PM

REGULAR DEPARTMENT PAYMENT REGISTER

PAGE: 7

PACKET: 06713 Regular Payments JULY 21, 2010

VENDOR SET: 01

FUND : 01 GENERAL FUND

DEPARTMENT: 570 GENERAL SERVICES

BANK: OPER

BUDGET TO USE: CB-CURRENT BUDGET

VENDOR	NAME	ITEM #	G/L ACCOUNT NAME	DESCRIPTION	CHECK#	AMOUNT
=====						
01-009159	IKON OFFICE SOLUTIONS					
		I-82482056	01 -570-0510	RENTAL OF EQU	117463	304.92
				DEPARTMENT 570 GENERAL SERVICES	TOTAL:	304.92

				FUND 01 GENERAL FUND	TOTAL:	239,140.06

7/21/2010 3:39 PM

REGULAR DEPARTMENT PAYMENT REGISTER

PAGE: 8

PACKET: 06713 Regular Payments JULY 21, 2010

VENDOR SET: 01

FUND : 02 HOTEL/MOTEL TAX FUND

DEPARTMENT: 590 VISITORS BUREAU

BANK: OPER

BUDGET TO USE: CB-CURRENT BUDGET

VENDOR	NAME	ITEM #	G/L ACCOUNT NAME	DESCRIPTION	CHECK#	AMOUNT
=====						
01-006241	FUELMAN					
		I-NP25625073	02 -590-0104	FUELS & LUBRI FUEL PURCHASED JUNE 1 -30,2010	117459	41.40
DEPARTMENT 590 VISITORS BUREAU TOTAL:						41.40

7/21/2010 3:39 PM

REGULAR DEPARTMENT PAYMENT REGISTER

PAGE: 9

PACKET: 06713 Regular Payments JULY 21,2010

VENDOR SET: 01

FUND : 02 HOTEL/MOTEL TAX FUND

DEPARTMENT: 592 SALES & MARKETING

BANK: OPER

BUDGET TO USE: CB-CURRENT BUDGET

VENDOR	NAME	ITEM #	G/L ACCOUNT NAME	DESCRIPTION	CHECK#	AMOUNT
01-006241	FUELMAN					
		I-NP25625073	02 -592-0104	FUELS & LUBRI FUEL PURCHASED JUNE 1 -30,2010	117459	201.06
01-017002	DAN QUANDT					
		I-61810	02 -592-0550	TRAVEL EXPENS MILEAGE REIMBURSEMENT	117468	338.80
				DEPARTMENT 592 SALES & MARKETING	TOTAL:	539.86

7/21/2010 3:39 PM

REGULAR DEPARTMENT PAYMENT REGISTER

PAGE: 10

PACKET: 06713 Regular Payments JULY 21,2010

VENDOR SET: 01

FUND : 02 HOTEL/MOTEL TAX FUND

DEPARTMENT: 593 EVENTS MARKETING

BANK: OPER

BUDGET TO USE: CB-CURRENT BUDGET

VENDOR	NAME	ITEM #	G/L ACCOUNT NAME	DESCRIPTION	CHECK#	AMOUNT
=====						
01-006241	FUELMAN					
		I-NP25625073	02 -593-0104	FUEL & LUBRIC FUEL PURCHASED JUNE 1 -30,2010	117459	136.50
DEPARTMENT 593 EVENTS MARKETING TOTAL:						136.50

FUND	02	HOTEL/MOTEL TAX FUND	TOTAL:	717.76		

7/21/2010 3:39 PM

REGULAR DEPARTMENT PAYMENT REGISTER

PAGE: 11

PACKET: 06713 Regular Payments JULY 21,2010

VENDOR SET: 01

FUND : 06 CONVENTION CENTER FUND

DEPARTMENT: 565 CONVENTION CENTER OPER

BANK: OPER

BUDGET TO USE: CB-CURRENT BUDGET

VENDOR	NAME	ITEM #	G/L ACCOUNT NAME	DESCRIPTION	CHECK#	AMOUNT
=====						
01-006241	FUELMAN					
		I-NP25625073	06 -565-0104	FUELS & LUBRI FUEL PURCHASED JUNE 1 -30,2010	117459	219.24
DEPARTMENT 565 CONVENTION CENTER OPER TOTAL:						219.24

FUND 06 CONVENTION CENTER FUND TOTAL:						219.24

7/21/2010 3:39 PM

REGULAR DEPARTMENT PAYMENT REGISTER

PAGE: 12

PACKET: 06713 Regular Payments JULY 21,2010

VENDOR SET: 01

FUND : 30 TRANSPORTAION GRANT

DEPARTMENT: 591 TRANSPORTATION DEPT

BANK: OPER

BUDGET TO USE: CB-CURRENT BUDGET

VENDOR	NAME	ITEM #	G/L ACCOUNT NAME	DESCRIPTION	CHECK#	AMOUNT
=====						
01-006241	FUELMAN					
		I-NP25625073	30 -591-0104	FUELS & LUBRI FUEL PURCHASED JUNE 1 -30,2010	117459	10,054.82
01-019081	SEASIDE SERVICES					
		I-062910	30 -591-0411	BUILDING & ST CLEANING SERVICE	117469	180.00
01-020702	TRANSIT INFORMATION PRO					
		I-00011872	30 -591-0533	MARKETING 40 INFORMATION HOLDERS	117476	3,816.40
				DEPARTMENT 591 TRANSPORTATION DEPT	TOTAL:	14,051.22

				FUND 30 TRANSPORTAION GRANT	TOTAL:	14,051.22

7/21/2010 3:39 PM

REGULAR DEPARTMENT PAYMENT REGISTER

PAGE: 13

PACKET: 06713 Regular Payments JULY 21,2010

VENDOR SET: 01

FUND : 60 BEACH MAINTENANCE FUND

DEPARTMENT: 560 BEACH MAINTENANCE

BANK: OPER

BUDGET TO USE: CB-CURRENT BUDGET

VENDOR	NAME	ITEM #	G/L ACCOUNT NAME	DESCRIPTION	CHECK#	AMOUNT
=====						
01-006241	FUELMAN					
		I-NP25625073	60 -560-0104	FUEL & LUBRIC FUEL PURCHASED JUNE 1 -30,2010	117459	561.29
DEPARTMENT 560 BEACH MAINTENANCE TOTAL:						561.29
=====						
FUND 60 BEACH MAINTENANCE FUND TOTAL:						561.29

7/21/2010 3:39 PM

REGULAR DEPARTMENT PAYMENT REGISTER

PAGE: 14

PACKET: 06713 Regular Payments JULY 21,2010

VENDOR SET: 01

FUND : 99 HURRICANE RECOVERY

DEPARTMENT: 599 HURRICANE RECOVERY

BANK: OPER

BUDGET TO USE: CB-CURRENT BUDGET

VENDOR	NAME	ITEM #	G/L ACCOUNT NAME	DESCRIPTION	CHECK#	AMOUNT
01-007600	GULF COAST PAPER CO. IN					
		I-26515	99 -599-0150	MINOR TOOLS & HURRICANE ALEX	117461	489.00
01-013290	MO'S INDUSTRIAL IGNITIO					
		I-3977	99 -599-0410	MACHINERY & E HURRICANE ALEX	117466	360.00
		I-3978	99 -599-0410	MACHINERY & E HURRICANE ALEX	117466	377.90
01-019100	SEA GARDEN SALES					
		I-1343201	99 -599-0117	SAFETY SUPPLI HURRICANE ALEX	117470	892.24
01-023137	WILLIS DEVELOPMENT					
		I-1-1	99 -599-0411-01	BUILD & STRUC POLICE VEHICLE CANOPY	117479	32,504.25
				DEPARTMENT 599 HURRICANE RECOVERY	TOTAL:	34,623.39
				FUND 99 HURRICANE RECOVERY	TOTAL:	34,623.39
					REPORT GRAND TOTAL:	289,312.96

PKET: 06746 Regular Payments 7-30-10
 IDOR SET: 01
 ID : 01 GENERAL FUND
 PARTMENT: N/A NON-DEPARTMENTAL
 GET TO USE: CB-CURRENT BUDGET

BANK: OPER

IDOR	NAME	ITEM #	G/L ACCOUNT NAME	DESCRIPTION	CHECK#	AMOUNT
=====						
001290	AMERICAN FAMILY LIFE					
		I-035263	01 -2463	AMERICAN FAMI JULY 2010 EMPLOYEE PREMIUMS	117491	35.18
002200	BLUE CROSS BLUE SHIELD					
		I-72710	01 -2462	BLUE CROSS DE AUGUST 2010 DENTAL PREMIUM	117503	1,437.72
002205	BLUE CROSS BLUE SHIELD					
		I-71610	01 -2477	COBRA AUGUST 2010 COBRA DENTAL PREM	117505	80.78
006133	FORT DEARBORN LIFE INS					
		I-72310	01 -2465	VTL LIFE INSU EMPLOYEE PREMIUMS - VTL	117525	234.21
020057	TEXAS MUNICIPAL LEAGUE					
		I-72910	01 -2461	BLUE CROSS ME AUGUST 2010 MEDICAL PREMIUMS	117584	11,979.54
020700	TRANSAMERICA WORKSITE M					
		I-72910	01 -2464	TRANSAMERICA JULY 2010 EMPLOYEE PREMIUMS	117593	15.17
01	MISC. VENDORS					
	CUELLAR, KRISTAN	I-000201007142591	01 -2424	MUN. COURT BO Bond Refund:12194C -01	117608	204.00
	HALEY P. STROUD	I-000201007142592	01 -2424	MUN. COURT BO Bond Refund:11037C -01	117609	265.00
	VILLILON, VENITO	I-000201007232628	01 -2424	MUN. COURT BO Bond Refund:33717A -01	117610	5.00
	CONTRERAS, ROSA LA	I-000201007232629	01 -2424	MUN. COURT BO Bond Refund:33795A -01	117611	230.00
				DEPARTMENT	NON-DEPARTMENTAL	TOTAL: 14,486.60

PACKET: 06746 Regular Payments 7-30-10

VENDOR SET: 01

FUND : 01 GENERAL FUND

DEPARTMENT: 512 CITY ADMINISTRATION

BANK: OPER

BUDGET TO USE: CB-CURRENT BUDGET

VENDOR	NAME	ITEM #	G/L ACCOUNT NAME	DESCRIPTION	CHECK#	AMOUNT
01-001129	A & W OFFICE SUPPLY INC					
		I-432280-0	01 -512-0101	OFFICE SUPPLI PENS, PROJ.& FILE FLDRS	117486	47.13
		I-432280-1	01 -512-0101	OFFICE SUPPLI 1 DZ RETRACT.PENS	117486	7.44
01-002200	BLUE CROSS BLUE SHIELD					
		I-72710	01 -512-0081	GROUP INSURAN AUGUST 2010 DENTAL PREMIUM	117503	114.70
01-003423	CDW GOVERNMENT, INC.					
		C-SZQ4472	01 -512-0101	OFFICE SUPPLI HP 90 INK RETURNED	117509	236.25-
01-006133	FORT DEARBORN LIFE INS					
		I-71310	01 -512-0081	GROUP INSURAN AUGUST 2010,LTD,LIFE,AD&D PREM	117523	185.94
01-007600	GULF COAST PAPER CO. IN					
		I-35736	01 -512-0101	OFFICE SUPPLI DESK TOP CALCULATOR	117530	51.10
01-008211	SUSAN HILL					
		I-062310	01 -512-0550	TRAVEL EXPENS C/A: TRIP TO EL PASO AUG5-6	117535	500.00
01-018509	SAM'S CLUB DIRECT					
		I-999999 A-1	01 -512-0551	DUES & MEMBER City Sams Card:M. LOPEZ	117566	40.00
01-020043	TEXAS MUNICIPAL CLERK'S					
		I-62310	01 -512-0513	TRAINING EXPE REGISTRATION:SUSAN HILL	117482	215.00
01-020057	TEXAS MUNICIPAL LEAGUE					
		I-72910	01 -512-0081	GROUP INSURAN AUGUST 2010 MEDICAL PREMIUMS	117584	1,640.80
01-021212	UNIVERSITY OF TEXAS PAN					
		I-60310	01 -512-0513	TRAINING EXPE CCPM PROGRAM TRACK IV	117600	595.00
DEPARTMENT 512 CITY ADMINISTRATION					TOTAL:	3,160.86

7/30/2010 10:00 AM

REGULAR DEPARTMENT PAYMENT REGISTER

PAGE: 3

PACKET: 06746 Regular Payments 7-30-10

VENDOR SET: 01

FUND : 01 GENERAL FUND

DEPARTMENT: 513 FINANCE DEPARTMENT

BANK: OPER

BUDGET TO USE: CB-CURRENT BUDGET

VENDOR	NAME	ITEM #	G/L ACCOUNT NAME	DESCRIPTION	CHECK#	AMOUNT
01-001129	A & W OFFICE SUPPLY INC					
		I-432281-0	01 -513-0101	OFFICE SUPPLI HP INKJET CARTRIDGES	117486	34.98
01-002200	BLUE CROSS BLUE SHIELD					
		I-72710	01 -513-0081	GROUP INSURAN AUGUST 2010 DENTAL PREMIUM	117503	114.70
01-006133	FORT DEARBORN LIFE INS					
		I-71310	01 -513-0081	GROUP INSURAN AUGUST 2010,LTD,LIFE,AD&D PREM	117523	196.73
01-020057	TEXAS MUNICIPAL LEAGUE					
		I-72910	01 -513-0081	GROUP INSURAN AUGUST 2010 MEDICAL PREMIUMS	117584	1,660.80
				DEPARTMENT 513 FINANCE DEPARTMENT	TOTAL:	2,007.21

7/30/2010 10:00 AM

REGULAR DEPARTMENT PAYMENT REGISTER

PAGE: 4

PACKET: 06746 Regular Payments 7-30-10

VENDOR SET: 01

FUND : 01 GENERAL FUND

DEPARTMENT: 514 PLANNING DEPARTMENT

BANK: OPER

BUDGET TO USE: CB-CURRENT BUDGET

VENDOR	NAME	ITEM #	G/L ACCOUNT NAME	DESCRIPTION	CHECK#	AMOUNT
01-002200	BLUE CROSS BLUE SHIELD					
		I-72710	01 -514-0081	GROUP INSURAN AUGUST 2010 DENTAL PREMIUM	117503	45.88
01-006133	FORT DEARBORN LIFE INS					
		I-71310	01 -514-0081	GROUP INSURAN AUGUST 2010,LTD,LIFE,AD&D PREM	117523	75.04
01-020057	TEXAS MUNICIPAL LEAGUE					
		I-72910	01 -514-0081	GROUP INSURAN AUGUST 2010 MEDICAL PREMIUMS	117584	662.32
				DEPARTMENT 514 PLANNING DEPARTMENT	TOTAL:	783.24

PAGE: 5

BANK: OPER

DEPARTMENT 515	TECHNOLOGY DEPARTMENT	TOTAL:	7,497.12
----------------	-----------------------	--------	----------

7/30/2010 10:00 AM

REGULAR DEPARTMENT PAYMENT REGISTER

PAGE: 6

PACKET: 06746 Regular Payments 7-30-10

VENDOR SET: 01

FUND : 01 GENERAL FUND

DEPARTMENT: 516 HUMAN RESOURCES

BANK: OPER

BUDGET TO USE: CB-CURRENT BUDGET

VENDOR	NAME	ITEM #	G/L ACCOUNT NAME	DESCRIPTION	CHECK#	AMOUNT
01-002200	BLUE CROSS BLUE SHIELD					
		I-72710	01 -516-0081	GROUP INSURAN AUGUST 2010 DENTAL PREMIUM	117503	22.94
01-006133	FORT DEARBORN LIFE INS					
		I-71310	01 -516-0081	GROUP INSURAN AUGUST 2010,LTD,LIFE,AD&D PREM	117523	13.35
01-020057	TEXAS MUNICIPAL LEAGUE					
		I-72910	01 -516-0081	GROUP INSURAN AUGUST 2010 MEDICAL PREMIUMS	117584	326.16
				DEPARTMENT 516 HUMAN RESOURCES	TOTAL:	362.45

PACKET: 06746 Regular Payments 7-30-10

VENDOR SET: 01

FUND : 01 GENERAL FUND

DEPARTMENT: 520 MUNICIPAL COURT

BANK: OPER

BUDGET TO USE: CB-CURRENT BUDGET

VENDOR	NAME	ITEM #	G/L ACCOUNT NAME	DESCRIPTION	CHECK#	AMOUNT
01-002200	BLUE CROSS BLUE SHIELD					
		I-72710	01 -520-0081	GROUP INSURAN AUGUST 2010 DENTAL PREMIUM	117503	45.88
01-006133	FORT DEARBORN LIFE INS					
		I-71310	01 -520-0081	GROUP INSURAN AUGUST 2010,LTD,LIFE,AD&D PREM	117523	53.20
01-020057	TEXAS MUNICIPAL LEAGUE					
		I-72910	01 -520-0081	GROUP INSURAN AUGUST 2010 MEDICAL PREMIUMS	117584	652.32
				DEPARTMENT 520 MUNICIPAL COURT	TOTAL:	751.40

PACKET: 06746 Regular Payments 7-30-10

VENDOR SET: 01

FUND : 01 GENERAL FUND

DEPARTMENT: 521 POLICE DEPARTMENT

BANK: OPER

BUDGET TO USE: CB-CURRENT BUDGET

VENDOR	NAME	ITEM #	G/L ACCOUNT NAME	DESCRIPTION	CHECK#	AMOUNT
01-002200	BLUE CROSS BLUE SHIELD					
		I-72710	01 -521-0081	GROUP INSURAN AUGUST 2010 DENTAL PREMIUM	117503	871.72
01-006133	FORT DEARBORN LIFE INS					
		I-71310	01 -521-0081	GROUP INSURAN AUGUST 2010, LTD, LIFE, AD&D PREM	117523	1,071.11
01-007006	GT DISTRIBUTORS, INC.					
		I-INV0318744	01 -521-0161	AMMUNITION & PD: AMMUNITION	117528	1,440.78
01-011116	KUSTOM SIGNALS, INC.					
		I-420228	01 -521-0150	MINOR TOOLS & 1-ANTENNA CABLE, FRT	117537	80.00
01-012023	LEXIS NEXIS					
		I-1006202080	01 -521-0415	SERVICE CONTR PD-1 YR SERV AUG09-SEPT10	117539	152.00
01-016110	PADRE ISLAND'S ACE HARD					
		I-063821	01 -521-0150	MINOR TOOLS & 2-PK, . STAPLES	117552	6.38
		I-064296	01 -521-0150	MINOR TOOLS & MISC. HDW.	117552	2.98
01-018509	SAM'S CLUB DIRECT					
		I-999999 A-1	01 -521-0551	DUES & MEMBER City Sams Card:RACHEL ROC	117566	20.00
01-019595	SYMBOL ARTS					
		I-0130621-IN	01 -521-0116	AWARDS PD-CHALLENGE COINS	117579	233.50
		I-0131110-IN	01 -521-0130	WEARING APPAR PD- 2 BADGES-SGT. & POLIC	117579	160.00
01-020057	TEXAS MUNICIPAL LEAGUE					
		I-72910	01 -521-0081	GROUP INSURAN AUGUST 2010 MEDICAL PREMIUMS	117584	13,459.61
01-022015	VALLEY BAPTIST MEDICAL					
		I-70910	01 -521-0530	PROFESSIONAL PD-5 SEXUAL ASSLT EX	117602	2,750.00
01-022021	VALLEY EMERGENY PHYSICI					
		I-0902097	01 -521-0530	PROFESSIONAL PD-S/A EXAM-DELAGARZA,C	117603	375.00
DEPARTMENT 521 POLICE DEPARTMENT					TOTAL:	20,623.08

PACKET: 06746 Regular Payments 7-30-10

VENDOR SET: 01

FUND : 01 GENERAL FUND

DEPARTMENT: 522 FIRE DEPARTMENT

BANK: OPER

BUDGET TO USE: CB-CURRENT BUDGET

VENDOR	NAME	ITEM #	G/L ACCOUNT NAME	DESCRIPTION	CHECK#	AMOUNT
01-002200	BLUE CROSS BLUE SHIELD					
		I-72710	01 -522-0081	GROUP INSURAN AUGUST 2010 DENTAL PREMIUM	117503	481.74
01-006116	JOE KING JR.					
		I-24516	01 -522-0117	SAFETY SUPPLI HURRICANE RETRY STICKERS!	117522	450.00
01-006133	FORT DEARBORN LIFE INS					
		I-71310	01 -522-0081	GROUP INSURAN AUGUST 2010,LTD,LIFE,AD&D PREM	117523	674.02
01-013136	MANNY'S UNIFORMS					
		C-11657	01 -522-0130	WEARING APPAR 4 CLIP ON TIES RETURNED	117542	20.64-
		I-11517	01 -522-0130	WEARING APPAR REPLACEMENT UNIFORMS	117542	348.56
		I-11566	01 -522-0130	WEARING APPAR REPLACEMENT WHITE SHIRTS	117542	194.72
01-016110	PADRE ISLAND'S ACE HARD					
		I-063557	01 -522-0150	MINOR TOOLS & 2~ QTS. MOTOR OIL UNIT #F-2	117552	8.58
		I-063694	01 -522-0150	MINOR TOOLS & MISC. CABLE TIES	117552	13.48
		I-063782	01 -522-0113	BATTERIES 1-PK AA ALK. BATTERIES	117552	11.49
		I-064046	01 -522-0150	MINOR TOOLS & 1- BURNR RPL	117552	26.99
		I-064068	01 -522-0150	MINOR TOOLS & 2- 24" BUNGEE CORDS	117552	1.58
01-018509	SAM'S CLUB DIRECT					
		I-999999 A-1	01 -522-0551	DUES & MEMBER City Sams Card:YOLANDA CR	117566	20.00
01-019222	S.P.I. FIREFIGHTERS ASS					
		I-61910	01 -522-0130	WEARING APPAR MISC. REIMBURSEMENT	117571	45.00
01-020057	TEXAS MUNICIPAL LEAGUE					
		I-72910	01 -522-0081	GROUP INSURAN AUGUST 2010 MEDICAL PREMIUMS	117584	6,593.20
01-023124	GARY WILBURN					
		I-61110	01 -522-0551	DUES & MEMBER MISC. REIMBURSMENT	117606	35.00
		I-70210	01 -522-0130	WEARING APPAR MISC. REIMBURSEMENT	117606	28.99
DEPARTMENT 522 FIRE DEPARTMENT					TOTAL:	8,912.71

PACKET: 06746 Regular Payments 7-30-10

VENDOR SET: 01

FUND : 01 GENERAL FUND

DEPARTMENT: 532 CODE ENFORCEMENT

BANK: OPER

BUDGET TO USE: CB-CURRENT BUDGET

VENDOR	NAME	ITEM #	G/L ACCOUNT NAME	DESCRIPTION	CHECK#	AMOUNT
=====						
01-001950	B & N TRACTOR SERVICE					
	I-BN-168	01 -532-0545	LOT MOWING	MOWING @ 110 W. SUNSET	117498	39.00
	I-BN-169	01 -532-0545	LOT MOWING	MOWING @ 5906&5908 YUCCA CIR	117498	79.00
	I-BN-170	01 -532-0545	LOT MOWING	MOWING @ 112 PARADE	117498	69.00
	I-BN-171	01 -532-0545	LOT MOWING	MOWING @ 108 E. MARS	117498	59.00
	I-BN-176	01 -532-0545	LOT MOWING	MOWING 102 WEST PALM	117498	64.00
	I-BN-177	01 -532-0545	LOT MOWING	MOWING AT 104 E. MARISOL	117498	34.00
	I-BN-178	01 -532-0545	LOT MOWING	MOWING @ 6005 PADRE/102W/SUNSE	117498	100.00
01-002200	BLUE CROSS BLUE SHIELD					
	I-72710	01 -532-0081	GROUP INSURAN	AUGUST 2010 DENTAL PREMIUM	117503	137.64
01-006051	FASTENAL COMPANY					
	I-TXBRW84260	01 -532-0105	CHEMICALS	7- 56-512 APRONS	117519	131.90
01-006133	FORT DEARBORN LIFE INS					
	I-71310	01 -532-0081	GROUP INSURAN	AUGUST 2010,LTD,LIFE,AD&D PREM	117523	139.28
01-016699	PUBLIC HEALTH EQUIPMENT					
	I-6535	01 -532-0105	CHEMICALS	4-LARVICIDE DIPPERS	117559	64.71
01-018046	ISLA GRAND BEACH RESORT					
	I-9072	01 -532-0102	LOCAL MEETING	LUNCHEON MEETING: 6/10/10	117561	49.05
01-018509	SAM'S CLUB DIRECT					
	I-007793	01 -532-0113	BATTERIES	BATTERIES	117566	49.74
	I-007795	01 -532-0101	OFFICE SUPPLI	PENS	117566	19.76
	I-007796	01 -532-0101	OFFICE SUPPLI	FIRE EXT.	117566	74.49
	I-007797	01 -532-0105	CHEMICALS	WORKTABLE/GLOVES	117566	213.76
	I-999999 A-1	01 -532-0551	DUES & MEMBER	City Sams Card: AMY BUSH	117566	20.00
01-019192	SHERWIN WILLIAMS CO.					
	I-3820-9	01 -532-0105	CHEMICALS	2-GAL PAINT, THINNER,ETC	117569	88.57
01-020057	TEXAS MUNICIPAL LEAGUE					
	I-72910	01 -532-0081	GROUP INSURAN	AUGUST 2010 MEDICAL PREMIUMS	117584	1,976.96
01-020115	TX DEPT. OF STATE HEALT					
	I-07212010	01 -532-0513	TRAINING EXPE	STUDY MANUAL & COURSE PYMT	117588	115.00
01-020751	DAVID TRAVIS					
	I-72010	01 -532-0513	TRAINING EXPE	MISC. REIMBURSEMENT	117594	11.08
DEPARTMENT 532 CODE ENFORCEMENT						TOTAL: 3,535.94

PACKET: 06746 Regular Payments 7-30-10

VENDOR SET: 01

FUND : 01 GENERAL FUND

DEPARTMENT: 540 FLEET MANAGEMENT

BANK: OPER

BUDGET TO USE: CB-CURRENT BUDGET

VENDOR	NAME	ITEM #	G/L ACCOUNT NAME	DESCRIPTION	CHECK#	AMOUNT
=====						
01-001123	ADVANCE AUTO PARTS					
	C-3004	01 -540-0420-01	REPAIRS & MAI 24 QTS 5W30 OIL RETURNED	117484	47.76-	
	I-0702	01 -540-0420-01	REPAIRS & MAI 12 QTS EA. 5W30, 5W20	117484	47.76	
	I-2054	01 -540-0420-01	REPAIRS & MAI 12 QTS EZ. 5W30, 5W20	117484	47.76	
	I-2055	01 -540-0420-03	REPAIRS & MAI 12 QTS EA. 5W20, 5W30, PWKS	117484	47.76	
	I-2056	01 -540-0420-04	REPAIRS & MAI 12 QTS 5W20 OIL CODE ENF	117484	23.88	
	I-2373	01 -540-0420-01	REPAIRS & MAI MISC. OIL FILTERS PD	117484	41.36	
	I-2374	01 -540-0420-03	REPAIRS & MAI 4-OIL FILTERS PWKS	117484	7.52	
	I-2591	01 -540-0420-02	REPAIRS & MAI F-2 FD	117484	385.00	
	I-3000	01 -540-0420-01	REPAIRS & MAI 24 QTS. 5W30 OIL PD	117484	47.76	
	I-3002	01 -540-0420-01	REPAIRS & MAI 12 QTS EA. 5W30, 5W20	117484	47.76	
	I-3003	01 -540-0420-03	REPAIRS & MAI 12 QTS EA. 5W20, 5W30 PWKS	117484	47.76	
	I-3024	01 -540-0420-03	REPAIRS & MAI 24 QTS 5W20 OIL PWKS.	117484	47.76	
01-002200	BLUE CROSS BLUE SHIELD					
	I-72710	01 -540-0081	GROUP INSURAN AUGUST 2010 DENTAL PREMIUM	117503	45.88	
01-002435	BOGGUS MOTOR COMPANY					
	I-C44516	01 -540-0420-01	REPAIRS & MAI STATE INSPECTION UNIT#F-83 PD	117506	14.50	
	I-C44951	01 -540-0420-04	REPAIRS & MAI CABLE ADJUSTED. FORD RANGER	117506	46.00	
01-003424	CHEMTEX					
	I-629	01 -540-0420-03	REPAIRS & MAI 1-CS. BEAT IT	117510	56.00	
01-006083	FAST & FAIR CAR CARE					
	I-1256	01 -540-0420-04	REPAIRS & MAI INSPECTION #52, 2 PLUGS	117520	24.50	
	I-1722	01 -540-0420-01	REPAIRS & MAI 10 TIRES DISPOSAL FEE	117520	50.00	
	I-1728	01 -540-0420-03	REPAIRS & MAI INSPECTION UNIT F-73	117520	14.50	
	I-1736	01 -540-0420-03	REPAIRS & MAI STATE INSPECTION UNIT # 36	117520	14.50	
01-006133	FORT DEARBORN LIFE INS					
	I-71310	01 -540-0081	GROUP INSURAN AUGUST 2010, LTD, LIFE, AD&D PREM	117523	56.24	
01-006140	FLEET SAFETY EQUIPMENT,					
	I-6553	01 -540-1007	MOTOR VEHICLE PD-TAHOE PARTITIONS, 1 TRU	117526	1,330.00	
01-008120	ANGEL R. HERNANDEZ					
	I-709516	01 -540-0420-04	REPAIRS & MAI REMOVAL /INSTALLATION LGT BAR	117532	125.00	
	I-709519	01 -540-0420-01	REPAIRS & MAI PRISONER CAGE INSTALLATION	117532	210.00	
01-009685	JR'S AUTO SERVICE					
	I-70210	01 -540-0420-04	REPAIRS & MAI REPAIR ON UNIT CE-52	117536	90.00	
01-014030	NAPA AUTO PARTS					
	I-570942	01 -540-0420-03	REPAIRS & MAI 2-OIL FILTERS, 16 -OIL AIR COM	117547	87.87	
	I-571143	01 -540-0420-01	REPAIRS & MAI 6-PRO SELECT OIL , SOLVENT	117547	32.04	
	I-571281	01 -540-0420-03	REPAIRS & MAI TEST CLIPS, MIS. BULBS	117547	15.16	
	I-571338	01 -540-0420-01	REPAIRS & MAI HOSE, CLAMPS, FUEL FILTR OIL	117547	43.98	
	I-571470	01 -540-0420-03	REPAIRS & MAI LGT KIT, BATT. CABLE TERM	117547	50.87	

PACKET: 06746 Regular Payments 7-30-10

VENDOR SET: 01

FUND : 01 GENERAL FUND

DEPARTMENT: 540 FLEET MANAGEMENT

BANK: OPER

BUDGET TO USE: CB-CURRENT BUDGET

VENDOR	NAME	ITEM #	G/L ACCOUNT NAME	DESCRIPTION	CHECK#	AMOUNT
01-014030	NAPA AUTO PARTS		continued			
		I-571677	01 -540-0420-01	REPAIRS & MAI BATTERY, CORE DEP.ENV. CHARGE	117547	34.99
		I-571935	01 -540-0420-02	REPAIRS & MAI 10 ROLLS TOWELS	117547	23.90
		I-572038	01 -540-0420-02	REPAIRS & MAI 12 QTS EA. 5W30,5W20, OIL FILT	117547	90.54
		I-572039	01 -540-0420-01	REPAIRS & MAI 3- OIL FILTERS, UNIT# C-31	117547	8.16
		I-572386	01 -540-0420-01	REPAIRS & MAI 2- HORNS, UNIT #F-92	117547	32.78
01-015012	O'REILLY AUTOMOTIVE, IN					
		I-387450	01 -540-0420-01	REPAIRS & MAI 1-OXYGEN SENSE UNIT F-82	117548	69.59
		I-390901	01 -540-0420-01	REPAIRS & MAI PRIMER/SEALER, ENAMEL F-71	117548	29.94
01-015020	OIL PATCH FUEL & SUPPLY					
		I-314670	01 -540-0104	FUELS & LUBRI DIESEL FUEL DELIVERED 7/22/10	117549	1,238.72
01-016110	PADRE ISLAND'S ACE HARD					
		I-063384	01 -540-0420-02	REPAIRS & MAI CABLE TIES, MISC. HDW. FD	117552	3.13
01-019310	SOUTH SHORE AUTOMOTIVE					
		I-2938	01 -540-0420-02	REPAIRS & MAI STATE INSPECTION UNIT #F-1	117574	14.50
01-020057	TEXAS MUNICIPAL LEAGUE					
		I-72910	01 -540-0081	GROUP INSURAN AUGUST 2010 MEDICAL PREMIUMS	117584	652.32
01-1	MISC. VENDORS					
	ISLAND MARKET	I-63010	01 -540-0104-01	FUEL & LUBRIC ISLAND MARKET: FUEL PURCHASED	117612	21.25
DEPARTMENT 540 FLEET MANAGEMENT					TOTAL:	5,271.18

PAGE: 13

BANK: OPER

BUDGET TO USE: CB-CURRENT BUDGET

VENDOR	NAME	ITEM #	G/L ACCOUNT NAME	DESCRIPTION	CHECK#	AMOUNT
01-002200	BLUE CROSS BLUE SHIELD					
	I-72710	01 -541-0081	GROUP INSURAN	AUGUST 2010 DENTAL PREMIUM	117503	68.82
01-006133	FORT DEARBORN LIFE INS					
	I-71310	01 -541-0081	GROUP INSURAN	AUGUST 2010,LTD,LIFE,AD&D PREM	117523	153.62
01-016110	PADRE ISLAND'S ACE HARD					
	I-064029	01 -541-0150	MINOR TOOLS &	SCRWDRVR, CALUK, PAINTBRUSH	117552	33.94
	I-064302	01 -541-0427	PLUMBING	1-BRBRS NIPPLE, RR REPAIR	117552	5.49
01-019192	SHERWIN WILLIAMS CO.					
	I-4312-6	01 -541-0411	BUILDINGS & S	PAINT-BUILDING MAINT	117569	74.10
01-020016	TERMINIX					
	I-296505278	01 -541-0415	SERVICE CONTR	PEST CONTROL: 4501 PADRE BLV	117583	60.00
	I-296544086	01 -541-0415	SERVICE CONTR	PEST CONTROL 4601 PADRE	117583	200.00
01-020057	TEXAS MUNICIPAL LEAGUE					
	I-72910	01 -541-0081	GROUP INSURAN	AUGUST 2010 MEDICAL PREMIUMS	117584	988.48
01-021102	UNIFIRST CORP.					
	I-1839950	01 -541-0130	WEARING APPAR	UNIFORMS, AIR FRESHNER, ETC	117597	32.28
	I-1839950	01 -541-0160	LAUNDRY & JAN	UNIFORMS, AIR FRESHNER, ETC	117597	32.84
	I-1841880	01 -541-0130	WEARING APPAR	CAPS FOR PW CREW	117597	90.00
	I-1842087	01 -541-0130	WEARING APPAR	UNIFORMS, AIR FRESHENER, ETC	117597	32.28
	I-1842087	01 -541-0160	LAUNDRY & JAN	UNIFORMS, AIR FRESHENER, ETC	117597	83.19
DEPARTMENT 541 BUILDING MAINTENANCE					TOTAL:	1,855.04

7/30/2010 10:00 AM

REGULAR DEPARTMENT PAYMENT REGISTER

PAGE: 14

PACKET: 06746 Regular Payments 7-30-10

VENDOR SET: 01

FUND : 01 GENERAL FUND

DEPARTMENT: 542 INSPECTIONS DIVISION

BANK: OPER

BUDGET TO USE: CB-CURRENT BUDGET

VENDOR	NAME	ITEM #	G/L ACCOUNT NAME	DESCRIPTION	CHECK#	AMOUNT
01-002200	BLUE CROSS BLUE SHIELD					
	I-72710	01 -542-0081	GROUP INSURAN AUGUST 2010 DENTAL PREMIUM	117503	68.82	
01-006133	FORT DEARBORN LIFE INS					
	I-71310	01 -542-0081	GROUP INSURAN AUGUST 2010,LTD,LIFE,AD&D PREM	117523	122.80	
01-012008	LAND'S END INC.					
	I-08771814	01 -542-0130	WEARING APPAR BLDG INSPECTOR SHIRTS	117538	182.45	
01-020057	TEXAS MUNICIPAL LEAGUE					
	I-72910	01 -542-0081	GROUP INSURAN AUGUST 2010 MEDICAL PREMIUMS	117584	978.48	
			DEPARTMENT 542 INSPECTIONS DIVISION	TOTAL:	1,352.55	

PACKET: 06746 Regular Payments 7-30-10

VENDOR SET: 01

FUND : 01 GENERAL FUND

DEPARTMENT: 543 PUBLIC WORKS DEPARTMENT

BANK: OPER

BUDGET TO USE: CB-CURRENT BUDGET

VENDOR	NAME	ITEM #	G/L ACCOUNT NAME	DESCRIPTION	CHECK#	AMOUNT
01-002200	BLUE CROSS BLUE SHIELD					
		I-72710	01 -543-0081	GROUP INSURAN AUGUST 2010 DENTAL PREMIUM	117503	412.92
01-006045	F. D. HAUL & CONSTRUCTI					
		I-019	01 -543-0416	STREETS & RIG BACKHOE SERV	117518	680.00
		I-72710	01 -543-0416	STREETS & RIG CONCRETE REPAIRS	117518	2,900.00
01-006133	FORT DEARBORN LIFE INS					
		I-71310	01 -543-0081	GROUP INSURAN AUGUST 2010,LTD,LIFE,AD&D PREM	117523	486.17
01-007600	GULF COAST PAPER CO. IN					
		I-36987	01 -543-0150	MINOR TOOLS & TRASH BAGS	117530	239.40
01-012071	LAGUNA MDRE WTR DIST NO					
		I-072810-01	01 -543-0417	STORM SEWERS CONTRACT	117540	15,000.00
01-013114	MATHESON TRI-GAS					
		I-01625020	01 -543-0510	RENTAL OF EQU WELDING SUPPLIES - PWKS.	117541	105.12
01-013257	MISSION AUTO ELECTRIC					
		I-275155	01 -543-0410	MACHINERY & E MOWING HARDWARE	117544	522.88
		I-276016	01 -543-0410	MACHINERY & E PART FOR RIDING MOWER	117544	269.98
		I-276811	01 -543-0410	MACHINERY & E BLADES FOR SCAGGS	117544	307.85
01-016110	PADRE ISLAND'S ACE HARD					
		I-063541	01 -543-0150	MINOR TOOLS & BRASS NOZZLE, MISC.HDW	117552	12.94
		I-063838	01 -543-0416	STREETS & RIG 1-CAUTION BARRICADE TAPE	117552	10.99
		I-064054	01 -543-0412	LANDSCAPE PARTS FOR IRRIGATION SYSTEM	117552	14.26
		I-064178	01 -543-0412	LANDSCAPE GLV. NIPPLE, MISC. HDW. IRRIG.	117552	8.19
01-018509	SAM'S CLUB DIRECT					
		I-999999 A-1	01 -543-0551	DUES & MEMBER City Sams Card: DAVID ROC	117566	20.00
		I-999999 A-1	01 -543-0551	DUES & MEMBER City Sams Card: RUDY FALC	117566	20.00
01-020057	TEXAS MUNICIPAL LEAGUE					
		I-72910	01 -543-0081	GROUP INSURAN AUGUST 2010 MEDICAL PREMIUMS	117584	5,880.88
01-021102	UNIFIRST CORP.					
		I-1839950	01 -543-0130	WEARING APPAR UNIFORMS, AIR FRESHNER, ETC	117597	205.06
		I-1841880	01 -543-0130	WEARING APPAR CAPS FOR PW CREW	117597	270.00
		I-1842087	01 -543-0130	WEARING APPAR UNIFORMS, AIR FRESHENER, ETC	117597	205.06
01-023100	WHITE LUMBER & SUPPLY I					
		I-132139	01 -543-0112	SIGNS 12-80#BAGS CONCRETE MIX	117605	56.64
		I-133216	01 -543-0112	SIGNS 10- 80# BAGS CONCRETE	117605	47.20
		I-134015	01 -543-0112	SIGNS 10- 80# BAGS CONCRETE	117605	47.20

DEPARTMENT 543 PUBLIC WORKS DEPARTMENT TOTAL: 27,722.74

7/30/2010 10:00 AM

REGULAR DEPARTMENT PAYMENT REGISTER

PAGE: 16

PACKET: 06746 Regular Payments 7-30-10

VENDOR SET: 01

FUND : 01 GENERAL FUND

DEPARTMENT: 570 GENERAL SERVICES

BANK: OPER

BUDGET TO USE: CB-CURRENT BUDGET

VENDOR	NAME	ITEM #	G/L ACCOUNT NAME	DESCRIPTION	CHECK#	AMOUNT
01-002805	ALLIED WASTE SERVICES #					
		I-000381756	01 -570-0581	WATER, SEWER, 108 W. RETAMA ROLL-OFF SERV	117507	1,499.08
01-003773	CONSTELLATION NEW ENER					
		I-2439318	01 -570-0580	ELECTRICITY SERV@PADRE BLVD LOT TEMP	117513	30.58
01-006104	FIRST CHOICE POWER COMP					
		I-71810	01 -570-0580	ELECTRICITY 108 W. HUISACHE ST. U RRPARK	117521	29.15
		I-71910	01 -570-0580	ELECTRICITY 4501 PADRE SEC. ODL	117521	85.38
01-008100	SOUTH TEXAS EMERGENCY					
		I-0710SPI	01 -570-9027	HARLINGEN EME 4TH QTR AMBULANCE/VAC SUBSIDY	117531	53,715.75
01-016304	PITNEY BOWES					
		I-72810	01 -570-0108	POSTAGE FUNDS FOR POSTAGE METER	117556	600.00
01-016653	POSTMASTER					
		I-071510	01 -570-0108	POSTAGE ANNUAL FEE RENEWAL	117558	185.00
01-018509	SAM'S CLUB DIRECT					
		I-LC100720	01 -570-0101	OFFICE SUPPLI MISC. CHARGES	117566	3.23
01-019520	AT&T					
		I-70310	01 -570-0501	COMMUNICATION PHONE BILL DATED 7/03/10	117577	1,948.11
01-021095	UNITED PARCEL SERVICE					
		I-000034965X290	01 -570-0108	POSTAGE MISC. SHIPPING CHARGES	117596	80.00
01-022000	VALLEY BOTTLE WATER CO.					
		I-790154	01 -570-0581	WATER, SEWER, BOTTLED WATER PUBLIC WORKS	117601	58.25
		I-790155	01 -570-0581	WATER, SEWER, BOTTLED WATER FIRE DPT.	117601	51.75
		I-790157	01 -570-0581	WATER, SEWER, BOTTLED WATER PUBLIC WORKS	117601	61.50
01-023906	XEROX CORPORATION					
		I-048777894	01 -570-0510	RENTAL OF EQU COPIER LEASE	117607	344.11
		I-048777895	01 -570-0510	RENTAL OF EQU COPIER LEASE	117607	55.44
		I-049058634	01 -570-0510	RENTAL OF EQU COPIER LEASE FY2009-10	117607	387.48
DEPARTMENT 570 GENERAL SERVICES					TOTAL:	59,134.81

PACKET: 06746 Regular Payments 7-30-10

VENDOR SET: 01

FUND : 01 GENERAL FUND

DEPARTMENT: 572 SPECIAL PROJECTS

BANK: OPER

BUDGET TO USE: CB-CURRENT BUDGET

VENDOR	NAME	ITEM #	G/L ACCOUNT NAME	DESCRIPTION	CHECK#	AMOUNT
=====						
01-002051	VICTOR BALDOVINOS					
		I-72710	01 -572-9046	ISLAND LITTER CASH NEEDED TO PURCHASE	117499	50.00
01-002101	BEST LITTLE WAREHOUSE I					
		I-72210	01 -572-9179	HOLIDAY LIGHT STORAGE RENTAL:8/11-9/10/10	117501	170.00
01-013259	MINI-STOR ALL					
		I-7936	01 -572-9179	HOLIDAY LIGHT X-MAS STORAGE UNIT	117545	83.00
01-018130	REMOTE SYSTEMS INTEGRAT					
		I-1086	01 -572-9174	HELIPAD RELOCATION OF AWOS UNIT	117563	17,900.00
01-020079	KEEP TEXAS BEAUTIFUL					
		I-72110	01 -572-9046	ISLAND LITTER 2- AFFILIATE ROAD SIGNS	117586	150.00
				DEPARTMENT 572 SPECIAL PROJECTS	TOTAL:	18,353.00
=====						
				FUND 01 GENERAL FUND	TOTAL:	175,809.93

PACKET: 06746 Regular Payments 7-30-10

VENDOR SET: 01

FUND : 02 HOTEL/MOTEL TAX FUND

DEPARTMENT: 590 VISITORS BUREAU

BANK: OPER

BUDGET TO USE: CB-CURRENT BUDGET

VENDOR	NAME	ITEM #	G/L ACCOUNT NAME	DESCRIPTION	CHECK#	AMOUNT
01-001210	AIR FILTER COMPANY					
		I-0000050053	02 -590-0411	BUILDINGS & S AIR FILTER SERVICE VISITORS CT	117489	24.00
01-002200	BLUE CROSS BLUE SHIELD					
		I-72710	02 -590-0081	GROUP INSURAN AUGUST 2010 DENTAL PREMIUM	117503	45.88
01-003423	CDW GOVERNMENT, INC.					
		I-SZH0115	02 -590-0150	MINOR TOOLS & 1-22"MONITORAND SPLITTER	117509	187.30
01-006133	FORT DEARBORN LIFE INS					
		I-71310	02 -590-0081	GROUP INSURAN AUGUST 2010,LTD,LIFE,AD&D PREM	117523	53.69
01-007600	GULF COAST PAPER CO. IN					
		I-33266	02 -590-0160	LAUNDRY & JAN MISC. JANITORAIL SUPPLIES	117530	185.02
		I-35383	02 -590-0160	LAUNDRY & JAN PAPER TOWELS ,ETC	117530	116.97
01-018130	REMOTE SYSTEMS INTEGRAT					
		I-1086	02 -590-1001	BUILDINGS & S RELOCATION OF AWOS UNIT	117563	2,500.00
01-019404	SPRINT					
		I-463528814-032	02 -590-0501	COMMUNICATION CELLPHONE BILL FOR 6/17-7/16	117575	52.07
01-019520	AT&T					
		I-70310	02 -590-0501	COMMUNICATION PHONE BILL DATED 7/03/10	117577	621.32
01-020057	TEXAS MUNICIPAL LEAGUE					
		I-72910	02 -590-0081	GROUP INSURAN AUGUST 2010 MEDICAL PREMIUMS	117584	672.32
01-020104	TEXAS APPROACH/GROUP TE					
		I-711	02 -590-0108	POSTAGE FRT & DRAYAGE CHGS.	117587	2,596.36
01-020661	TOP CUT LAWN CARE & IRR					
		I-29350	02 -590-0412	LANDSCAPE LAWN CARE SERVICE	117592	375.00
		I-29393	02 -590-0150	MINOR TOOLS & 1 POND MASTER PUMPT V CTR	117592	79.85
01-021095	UNITED PARCEL SERVICE					
		I-0000648239280	02 -590-0108	POSTAGE MISC. SHIPPING CHARGES	117596	29.82
		I-0000648239290	02 -590-0108	POSTAGE MISC. SHIPPING CHARGES	117596	445.72
01-021102	UNIFIRST CORP.					
		I-1842088	02 -590-0160	LAUNDRY & JAN FLOOR MATS VISITORS CTR	117597	38.15
01-021110	UNITED STATES POSTAL SR					
		I-71910	02 -590-0108	POSTAGE POSTAGE METER FUNDS	117599	5,000.00
DEPARTMENT 590 VISITORS BUREAU				TOTAL:		13,023.47

PACKET: 06746 Regular Payments 7-30-10

VENDOR SET: 01

FUND : 02 HOTEL/MOTEL TAX FUND

DEPARTMENT: 592 SALES & MARKETING

BANK: OPER

BUDGET TO USE: CB-CURRENT BUDGET

VENDOR	NAME	ITEM #	G/L ACCOUNT NAME	DESCRIPTION	CHECK#	AMOUNT
=====						
01-001344	THE ATKINS GROUP					
		I-5261	02 -592-0530	PROFESSIONAL MARCH 2010	117492	6,000.00
		I-5264	02 -592-0530	PROFESSIONAL 1ST QTR 2010	117492	4,230.52
		I-5467	02 -592-0530	PROFESSIONAL	117492	1,600.00
		I-5507	02 -592-0530	PROFESSIONAL JUNE 2010	117492	3,168.75
		I-5507-3	02 -592-0530	PROFESSIONAL JUNE 2010	117492	1,105.00
		I-5509	02 -592-0559	INTERNET JUNE	117492	2,817.58
		I-5510	02 -592-0530	PROFESSIONAL 2ND QTR 2010	117492	2,906.20
		I-5513	02 -592-0530	PROFESSIONAL 1ST QTR	117492	4,137.45
		I-5514	02 -592-0531	MEDIA PLACEME JUNE	117492	9,700.00
		I-5515	02 -592-0531	MEDIA PLACEME JULY 2010	117492	8,152.94
		I-5516	02 -592-0531	MEDIA PLACEME JUNE 2010	117492	6,668.00
		I-5517	02 -592-0531	MEDIA PLACEME JUNE 2010	117492	9,000.00
		I-5518	02 -592-0531	MEDIA PLACEME JULY 2010	117492	352.94
		I-5519	02 -592-0531	MEDIA PLACEME CORPUS CHRISTI, 6/25-7/24	117492	1,647.10
		I-5520	02 -592-0531	MEDIA PLACEME JUNE 2010	117492	2,315.00
		I-5521	02 -592-0559	INTERNET JUNE 2010	117492	85.00
		I-5525	02 -592-0531	MEDIA PLACEME SUMMER 2010	117492	5,764.85
		I-5544	02 -592-0531	MEDIA PLACEME 4/23/10	117492	1,061.20
		I-5545	02 -592-0530	PROFESSIONAL	117492	5,000.00
		I-5546	02 -592-0531	MEDIA PLACEME CREATIVE SERVICES TX TOUR	117492	800.00
01-002200	BLUE CROSS BLUE SHIELD					
		I-72710	02 -592-0081	GROUP INSURAN AUGUST 2010 DENTAL PREMIUM	117503	229.40
01-004006	DEROUSIE, LILIA					
		I-72210	02 -592-0550	TRAVEL EXPENS MISC. REIMBURSEMENT	117515	207.50
01-006133	FORT DEARBORN LIFE INS					
		I-71310	02 -592-0081	GROUP INSURAN AUGUST 2010, LTD, LIFE, AD&D PREM	117523	321.66
01-018087	ISLAND GEEK					
		I-1015	02 -592-0530	PROFESSIONAL RETAINER TECH SERVICES	117562	1,500.00
01-018509	SAM'S CLUB DIRECT					
		I-999999A-1	02 -592-0551	DUES & MEMBER DAN QUANDT	117566	19.00
		I-999999A-1	02 -592-0551	DUES & MEMBER SYLVIA MATA	117566	19.00
		I-999999A-1	02 -592-0551	DUES & MEMBER MARY K. POLLARD-HANCOCK	117566	19.00
		I-999999A-1	02 -592-0551	DUES & MEMBER DIXIE ROWELL	117566	19.00
		I-999999A-1	02 -592-0551	DUES & MEMBER URBANO GONZALEZ	117566	19.00
01-019129	SGMP PROFESSIONAL DEVEL					
		I-071510	02 -592-0553	TRADE SHOW FE SPONSORSHIP :2010 PROFESSIONAL	117568	300.00
01-019253	SYLVIA SOLIZ					
		C-72910	02 -592-0550	TRAVEL EXPENS ADJ. MADE ON EXP REPORT	117573	8.00-
		I-61810	02 -592-0550	TRAVEL EXPENS MILEAGE & MISC. REIMBURSE	117573	45.35
01-019404	SPRINT					

PACKET: 06746 Regular Payments 7-30-10

VENDOR SET: 01

FUND : 02 HOTEL/MOTEL TAX FUND

DEPARTMENT: 592 SALES & MARKETING

BANK: OPER

BUDGET TO USE: CB-CURRENT BUDGET

VENDOR	NAME	ITEM #	G/L ACCOUNT NAME	DESCRIPTION	CHECK#	AMOUNT
=====						
01-019404	SPRINT		continued			
		I-463528814-032	02 -592-0501	COMMUNICATION CELLPHONE BILL FOR 6/17-7/16	117575	455.51
01-019510	AT&T ADVERTISING & PUBL					
		I-071110	02 -592-0531	MEDIA PLACEME YELLOW PAGE ADVERTISING	117576	256.40
01-019520	AT&T					
		I-70310	02 -592-0501	COMMUNICATION PHONE BILL DATED 7/03/10	117577	569.55
01-020057	TEXAS MUNICIPAL LEAGUE					
		I-72910	02 -592-0081	GROUP INSURAN AUGUST 2010 MEDICAL PREMIUMS	117584	3,271.60
01-020171	TEXAS ASSOCIATION OF FI					
		I-1243	02 -592-0535	FAMILIARIZATI SPONSORSHIP OF FILM TEXAS	117589	1,500.00
DEPARTMENT 592 SALES & MARKETING TOTAL:						85,256.50

7/30/2010 10:00 AM

REGULAR DEPARTMENT PAYMENT REGISTER

PAGE: 21

PACKET: 06746 Regular Payments 7-30-10

VENDOR SET: 01

FUND : 02 HOTEL/MOTEL TAX FUND

DEPARTMENT: 593 EVENTS MARKETING

BANK: OPER

BUDGET TO USE: CB-CURRENT BUDGET

VENDOR	NAME	ITEM #	G/L ACCOUNT NAME	DESCRIPTION	CHECK#	AMOUNT
=====						
01-001344	THE ATKINS GROUP					
		I-5467-1	02 -593-8015	TEXAS POLICE POLICE GAMES ADVERTISING	117492	400.00
01-002200	BLUE CROSS BLUE SHIELD					
		I-72710	02 -593-0081	GROUP INSURAN AUGUST 2010 DENTAL PREMIUM	117503	22.94
01-003697	A CLEAN PORTOCO BRWNSVL					
		I-01-128849-02	02 -593-8015	TEXAS POLICE PORTA POTTYS -POLICE GAMES	117512	65.00
01-006133	FORT DEARBORN LIFE INS					
		I-71310	02 -593-0081	GROUP INSURAN AUGUST 2010,LTD,LIFE,AD&D PREM	117523	33.10
01-016606	POINT ISABEL I.S.D.					
		I-6192010	02 -593-8015	TEXAS POLICE FACILITY FEES: POLICE GAMES 20	117557	838.00
01-020057	TEXAS MUNICIPAL LEAGUE					
		I-72910	02 -593-0081	GROUP INSURAN AUGUST 2010 MEDICAL PREMIUMS	117584	537.92
DEPARTMENT 593 EVENTS MARKETING					TOTAL:	1,896.96

FUND 02 HOTEL/MOTEL TAX FUND					TOTAL:	100,176.93

PACKET: 06746 Regular Payments 7-30-10
 VENDOR SET: 01
 FUND : 06 CONVENTION CENTER FUND
 DEPARTMENT: 565 CONVENTION CENTER OPER
 BUDGET TO USE: CB-CURRENT BUDGET

BANK: OPER

VENDOR	NAME	ITEM #	G/L ACCOUNT NAME	DESCRIPTION	CHECK#	AMOUNT
01-001014	ADMIRAL LINEN & UNIFORM					
	I-JL61475	06 -565-0150	MINOR TOOLS & MOPS, AIR FRESHENERS, ETC	117483	43.00	
	I-JL61476	06 -565-0150	MINOR TOOLS & MISC. TABLECOVERS	117483	42.10	
	I-JL65403	06 -565-0150	MINOR TOOLS & MOPS, AIR FRESHENERS, ETC	117483	43.00	
	I-JL65404	06 -565-0510	RENTAL OF EQU MISC. TABLECOVERS	117483	42.10	
01-002052	BEN E. KEITH, CO.					
	I-01754381	06 -565-0176	CONCESSION SU CONCESSIONS/CATERING SUPPLIS	117500	4,157.84	
01-002200	BLUE CROSS BLUE SHIELD					
	I-72710	06 -565-0081	GROUP INSURAN AUGUST 2010 DENTAL PREMIUM	117503	229.40	
01-006133	FORT DEARBORN LIFE INS					
	I-71310	06 -565-0081	GROUP INSURAN AUGUST 2010,LTD,LIFE,AD&D PREM	117523	239.49	
01-007600	GULF COAST PAPER CO. IN					
	I-35379	06 -565-0160	LAUNDRY & JAN JANITORIAL SUPPLIES	117530	382.05	
01-013246	METRO ELECTRIC					
	I-34689	06 -565-1001	BUILDINGS & S CHECK EXHIBIT HALL LIGHTS	117543	120.00	
01-013297	MOBILE MINI, INC					
	I-122092369	06 -565-0510	RENTAL OF EQU MOBILE OFFICE RENTAL	117546	243.00	
01-015027	ORKIN EXTERMINATING CO.					
	I-56748648	06 -565-0415	SERVICE CONTR PEST CONTROL SERVICES	117550	314.96	
	I-56749590	06 -565-0415	SERVICE CONTR PEST CONTROL SERVICES	117550	77.88	
01-016110	PADRE ISLAND'S ACE HARD					
	I-063684	06 -565-0150	MINOR TOOLS & BLEACH, CIRC. TESTER, BULBS	117552	87.33	
	I-064042	06 -565-0150	MINOR TOOLS & GLOVES, POP-UP SPRKLER, ETC	117552	65.39	
	I-064048	06 -565-0150	MINOR TOOLS & MTL. REPAIR TAPE, ICE CHEST,ET	117552	39.43	
01-019404	SPRINT					
	I-463528814-032	06 -565-0501	COMMUNICATION CELLPHONE BILL FOR 6/17-7/16	117575	104.34	
01-019520	AT&T					
	I-70310	06 -565-0501	COMMUNICATION PHONE BILL DATED 7/03/10	117577	1,760.41	
01-020057	TEXAS MUNICIPAL LEAGUE					
	I-72910	06 -565-0081	GROUP INSURAN AUGUST 2010 MEDICAL PREMIUMS	117584	3,281.60	
01-020816	TROPI TEX					
	I-6105	06 -565-0412	LANDSCAPE MAI FERTILIZED	117595	1,475.00	
01-021102	UNIFIRST CORP.					
	I-1839952	06 -565-0130	WEARING APPAR UNIFORMS, FLOOR MATS, ETC	117597	85.22	
	I-1839952	06 -565-0160	LAUNDRY & JAN UNIFORMS, FLOOR MATS, ETC	117597	10.46	
	I-1842090	06 -565-0130	WEARING APPAR UNIFORMS, MATS, ETC	117597	85.22	

7/30/2010 10:00 AM

REGULAR DEPARTMENT PAYMENT REGISTER

PAGE: 23

PACKET: 06746 Regular Payments 7-30-10

VENDOR SET: 01

FUND : 06 CONVENTION CENTER FUND

DEPARTMENT: 565 CONVENTION CENTER OPER

BANK: OPER

BUDGET TO USE: CB-CURRENT BUDGET

VENDOR	NAME	ITEM #	G/L ACCOUNT NAME	DESCRIPTION	CHECK#	AMOUNT
=====						
01-021102	UNIFIRST CORP.		continued			
		I-1842090	06 -565-0160	LAUNDRY & JAN UNIFORMS, MATS, ETC	117597	10.46
01-022000	VALLEY BOTTLE WATER CO.					
		I-790152	06 -565-0581	WATER, SEWER BOTTLED WATER - CVB	117601	45.25
DEPARTMENT 565 CONVENTION CENTER OPER					TOTAL:	12,984.93

FUND 06 CONVENTION CENTER FUND					TOTAL:	12,984.93

7/30/2010 10:00 AM

REGULAR DEPARTMENT PAYMENT REGISTER

PAGE: 24

PACKET: 06746 Regular Payments 7-30-10

VENDOR SET: 01

FUND : 21 MUN. COURT TECHNOLOGY

DEPARTMENT: 520 MUN COURT TECHNOLOGY

BANK: OPER

BUDGET TO USE: CB-CURRENT BUDGET

VENDOR	NAME	ITEM #	G/L ACCOUNT NAME	DESCRIPTION	CHECK#	AMOUNT
=====						
01-023906	XEROX CORPORATION					
		I-048777893	21 -520-0510	RENTAL OF EQU COPIER LEASE FY2009-10	117607	258.29
DEPARTMENT 520 MUN COURT TECHNOLOGY TOTAL:						258.29

FUND	21	MUN. COURT TECHNOLOGY	TOTAL:	258.29		

PACKET: 06746 Regular Payments 7-30-10

VENDOR SET: 01

FUND : 30 TRANSPORTAION GRANT

DEPARTMENT: 591 TRANSPORTATION DEPT

BANK: OPER

BUDGET TO USE: CB-CURRENT BUDGET

VENDOR	NAME	ITEM #	G/L ACCOUNT NAME	DESCRIPTION	CHECK#	AMOUNT
01-001123	ADVANCE AUTO PARTS					
		I-2927	30 -591-0420	MOTOR VEHICLE OIL, AIR & FUEL FILTERS, BUSES	117484	144.19
01-001129	A & W OFFICE SUPPLY INC					
		I-432962-0	30 -591-0401	FURNITURE & F Dry Erase Board	117486	368.99
		I-433161-0	30 -591-0101	OFFICE SUPPLI OFFICE SUPPLIES	117486	116.77
		I-433162-0	30 -591-0160	LAUNDRY & JAN TOOLS & SUPPLIES	117486	189.02
01-001258	ALL MODERN					
		I-21409069	30 -591-0401	FURNITURE & F File Pedestal	117490	1,268.00
01-001359	JESUS ARRIAGA					
		I-72010	30 -591-0550	TRAVEL EXPENS MISC. REIMBURSEMENT	117495	79.20
		I-73010	30 -591-0550	TRAVEL EXPENS MISC. REIMBURSEMENT	117495	27.57
01-001393	ANDY'S AUTO & BUS AIR,					
		I-0005-0032450	30 -591-0420	MOTOR VEHICLE 1-CLUTHCH ASSY 8 GR.	117496	129.95
01-002196	BLANCO'S DETAILING SERV					
		I-161	30 -591-0420	MOTOR VEHICLE WASH & DETAIL BUSES-10	117502	400.00
		I-165	30 -591-0420	MOTOR VEHICLE WASH & DETAIL BUSES-10	117502	400.00
		I-71410	30 -591-0420	MOTOR VEHICLE WASH & DETAIL BUSES-10	117502	400.00
01-002200	BLUE CROSS BLUE SHIELD					
		I-72710	30 -591-0081	GROUP INSURAN AUGUST 2010 DENTAL PREMIUM	117503	183.52
01-003439	CHAMPION OCCUPATIONAL					
		I-31110	30 -591-0530	PROFESSIONAL MISC. DRUG TESTING	117511	230.00
01-003805	PAUL CUNNINGHAM					
		I-72610	30 -591-0090	MERIT ADJUSTM SETTLEMENT	117481	15,000.00
01-006083	FAST & FAIR CAR CARE					
		I-1259	30 -591-0420	MOTOR VEHICLE STATE INSPECTION UNIT 23 VAN	117520	14.50
01-006133	FORT DEARBORN LIFE INS					
		I-71310	30 -591-0081	GROUP INSURAN AUGUST 2010,LTD,LIFE,AD&D PREM	117523	188.34
01-006997	G & K SERVICES					
		I-1103448157	30 -591-0130	WEARING APPAR UNIFORMS	117527	103.96
		I-1103451393	30 -591-0130	WEARING APPAR UNIFORMS	117527	102.62
		I-1103454620	30 -591-0130	WEARING APPAR UNIFORMS	117527	103.29
01-015020	OIL PATCH FUEL & SUPPLY					
		I-314087	30 -591-0104	FUELS & LUBRI BUS OIL	117549	442.60
01-016110	PADRE ISLAND'S ACE HARD					
		I-062880	30 -591-0150	MINOR TOOLS & MISC. HDW(SPARE KEYS)	117552	19.08
		I-063701	30 -591-0150	MINOR TOOLS & DRILL BIT, SCRWRD. HDW,	117552	61.72

PACKET: 06746 Regular Payments 7-30-10

VENDOR SET: 01

FUND : 30 TRANSPORTATION GRANT

DEPARTMENT: 591 TRANSPORTATION DEPT

BANK: OPER

BUDGET TO USE: CB-CURRENT BUDGET

VENDOR	NAME	ITEM #	G/L ACCOUNT NAME	DESCRIPTION	CHECK#	AMOUNT
=====						
01-016110	PADRE ISLAND'S ACE HARD	continued				
	I-063710	30	-591-0150	MINOR TOOLS & SCHEDULE HOLDER FOR BUS SHEL	117552	29.99
	I-063710	30	-591-0150	MINOR TOOLS & CREDIT FOR MERC. EXCHANGE	117552	14.99-
	I-063730	30	-591-0150	MINOR TOOLS & TIRE CLNR, MISC. HDW	117552	8.50
	I-063750	30	-591-0150	MINOR TOOLS & DRILL BITS, MISC. HDW	117552	31.50
	I-063799	30	-591-0150	MINOR TOOLS & ADAPTR, BUSHING, PRS. HOSE	117552	47.13
	I-063800	30	-591-0150	MINOR TOOLS & 1-4PK TIEDOWN RATCHET	117552	25.99
	I-064002	30	-591-0150	MINOR TOOLS & SURGE SUPPRESSOR, EXG MER	117552	21.99
	I-064002	30	-591-0150	MINOR TOOLS & CREDIT FOR MER. EXCHANGE	117552	17.94-
	I-064070	30	-591-0150	MINOR TOOLS & WIPING CLOTHS, MISC. HDW	117552	19.49
	I-064158	30	-591-0150	MINOR TOOLS & 3-MISC. HARDWARE	117552	4.47
01-019404	SPRINT					
	I-463528814-032	30	-591-0501	COMMUNICATION CELLPHONE BILL FOR 6/17-7/16	117575	210.57
01-019520	AT&T					
	I-70310	30	-591-0501	COMMUNICATION PHONE BILL DATED 7/03/10	117577	278.30
01-019897	TEENA SIMON					
	I-70110	30	-591-0150	MINOR TOOLS & MISC. REIMBURSEMENT	117581	16.64
01-020004	TEXAS BUS SALES, INC.					
	I-0104615	30	-591-0420	MOTOR VEHICLE 1-SUPPLEMENT KIT	117582	111.59
01-020057	TEXAS MUNICIPAL LEAGUE					
	I-72910	30	-591-0081	GROUP INSURAN AUGUST 2010 MEDICAL PREMIUMS	117584	2,841.04
01-021102	UNIFIRST CORP.					
	I-1839950	30	-591-0130	WEARING APPAR UNIFORMS, AIR FRESHNER, ETC	117597	11.04
	I-1842087	30	-591-0130	WEARING APPAR UNIFORMS, AIR FRESHENER, ETC	117597	11.04
DEPARTMENT 591 TRANSPORTATION DEPT						TOTAL: 23,609.67

FUND	30	TRANSPORTATION GRANT			TOTAL:	23,609.67

7/30/2010 10:00 AM

REGULAR DEPARTMENT PAYMENT REGISTER

PAGE: 27

PACKET: 06746 Regular Payments 7-30-10

VENDOR SET: 01

FUND : 32 CRIMINAL JUSTICE GRANT

DEPARTMENT: 521 POLICE DEPARTMENT

BANK: OPER

BUDGET TO USE: CB-CURRENT BUDGET

VENDOR	NAME	ITEM #	G/L ACCOUNT NAME	DESCRIPTION	CHECK#	AMOUNT
=====						
01-019252	SIRCHIE FINGER PRINT					
		I-0538823-IN	32 -521-0150	MINOR TOOLS & PD-CRIME SCENE EQUIPM'T	117572	1,776.75
		I-5388239-IN	32 -521-0150	MINOR TOOLS & PD-CRIME SCENE EQUIPM'T	117572	548.30
DEPARTMENT 521 POLICE DEPARTMENT TOTAL:						2,325.05

FUND 32 CRIMINAL JUSTICE GRANT TOTAL:						2,325.05

7/30/2010 10:00 AM

REGULAR DEPARTMENT PAYMENT REGISTER

PAGE: 28

PACKET: 06746 Regular Payments 7-30-10

VENDOR SET: 01

FUND : 60 BEACH MAINTENANCE FUND

DEPARTMENT: 522 BEACH PATROL / PT TIME

BANK: OPER

BUDGET TO USE: CB-CURRENT BUDGET

VENDOR	NAME	ITEM #	G/L ACCOUNT NAME	DESCRIPTION	CHECK#	AMOUNT
=====						
01-014030	NAPA AUTO PARTS					
		I-571880	60 -522-0150	MINOR TOOLS & 1-AC LUBE BEACH JEEP #3	117547	7.99
DEPARTMENT 522 BEACH PATROL / PT TIME TOTAL:						7.99

PAGE: 29

BANK: OPER

BUDGET TO USE: CB-CURRENT BUDGET

VENDOR	NAME	ITEM #	G/L ACCOUNT	NAME	DESCRIPTION	CHECK#	AMOUNT
=====							
01-001123	ADVANCE AUTO PARTS						
	I-2934	60	-560-0420	MOTOR VEHICLE FUEL & OIL FILTERS, UNIT#13,14	117484		47.79
01-002200	BLUE CROSS BLUE SHIELD						
	I-72710	60	-560-0081	GROUP INSURAN AUGUST 2010 DENTAL PREMIUM	117503		91.76
01-006043	LOS FRESNOS CONSTRUCTIO						
	I-702	60	-560-0510	EXCESS BEACH BEACH RAKE	117517		1,000.00
01-006133	FORT DEARBORN LIFE INS						
	I-71310	60	-560-0081	GROUP INSURAN AUGUST 2010,LTD,LIFE,AD&D PREM	117523		145.64
01-007600	GULF COAST PAPER CO. IN						
	I-32743	60	-560-0510	EXCESS BEACH DRUM LINERS	117530		489.00
	I-36385	60	-560-0510	EXCESS BEACH DRUM LINERS	117530		489.00
01-016110	PADRE ISLAND'S ACE HARD						
	I-063709	60	-560-0510	EXCESS BEACH MISC. HDW, FOR RAKE #14 & 15	117552		21.60
	I-064282	60	-560-0510	EXCESS BEACH PVC. COUPLES FOR RR REPAIR	117552		4.25
01-019404	SPRINT						
	I-463528814-032	60	-560-0501	COMMUNICATION CELLPHONE BILL FOR 6/17-7/16	117575		123.20
01-020057	TEXAS MUNICIPAL LEAGUE						
	I-72910	60	-560-0081	GROUP INSURAN AUGUST 2010 MEDICAL PREMIUMS	117584		1,304.64
01-020203	TIPTON MOTORS, INC						
	I-108817	60	-560-0420	MOTOR VEHICLE BEACH TRUCK #01	117591		525.00
				DEPARTMENT 560	BEACH MAINTENANCE	TOTAL:	4,241.88

				FUND	60	BEACH MAINTENANCE FUND	TOTAL:
							4,249.87

7/30/2010 10:00 AM

REGULAR DEPARTMENT PAYMENT REGISTER

PAGE: 30

PACKET: 06746 Regular Payments 7-30-10
VENDOR SET: 01
FUND : 80 ECONOMIC DEVELOPMENT CORP
DEPARTMENT: N/A NON-DEPARTMENTAL
BUDGET TO USE: CB-CURRENT BUDGET

BANK: OPER

VENDOR	NAME	ITEM #	G/L ACCOUNT NAME	DESCRIPTION	CHECK#	AMOUNT
=====						
01-001930	DANIEL ADAMS					
		I-275044	80 -1401	GIFT SHOP INV EDC/SPIBNC:GIFT SHOP ITEMS	117497	110.00
01-016182	PEGGY'S TREASURES					
		I-71910	80 -1401	GIFT SHOP INV EDC/SPIBNC:GIFT SHOP ITEMS	117555	436.50
01-017102	QUICK REFERENCE PUBLISH					
		I-00007359	80 -1401	GIFT SHOP INV EDCSPIBNC:BIRDS FIELD GUIDES	117560	204.00
01-018280	DOOLIE RULE					
		I-72710	80 -1401	GIFT SHOP INV EDC/SPIBNC:GIFT SHOP ITEMS	117565	94.50
				DEPARTMENT	NON-DEPARTMENTAL	TOTAL:
						845.00

7/30/2010 10:00 AM

REGULAR DEPARTMENT PAYMENT REGISTER

PAGE: 31

PACKET: 06746 Regular Payments 7-30-10

VENDOR SET: 01

FUND : 80 ECONOMIC DEVELOPMENT CORP

DEPARTMENT: 580 EDC

BANK: OPER

BUDGET TO USE: CB-CURRENT BUDGET

VENDOR	NAME	ITEM #	G/L ACCOUNT NAME	DESCRIPTION	CHECK#	AMOUNT
01-002200	BLUE CROSS BLUE SHIELD					
		I-72710	80 -580-0081	GROUP INSURAN AUGUST 2010 DENTAL PREMIUM	117503	22.94
01-003866	CYPRESS INTREACTIVE					
		I-15900	80 -580-0530	PROFESSIONAL EDC:PROGRAMMING EDC WEBSITE	117514	5,000.00
01-008179	HDR ENGINEERING INC.					
		I-00204349-H	80 -580-0534-018	MARINE SCIENC EDC:PROGRESS BILLING	117534	3,552.76
01-018133	REYNA & ASSOCIATES					
		I-71510	80 -580-9178	PROJECTS EDC:MGMT SERV, JULY 2010	117564	2,500.00
01-019520	AT&T					
		I-7310	80 -580-0501	COMMUNICATION EDC/SPIBNC:PHONE BILL7/3/10	117578	143.14
01-020057	TEXAS MUNICIPAL LEAGUE					
		I-72910	80 -580-0081	GROUP INSURAN AUGUST 2010 MEDICAL PREMIUMS	117584	326.16
				DEPARTMENT 580 EDC	TOTAL:	11,545.00

7/30/2010 10:00 AM

REGULAR DEPARTMENT PAYMENT REGISTER

PAGE: 33

PACKET: 06746 Regular Payments 7-30-10

VENDOR SET: 01

FUND : 85 BIRDING CENTER CONSTRUCTI

DEPARTMENT: 580 ** INVALID DEPT **

BANK: OPER

BUDGET TO USE: CB-CURRENT BUDGET

VENDOR	NAME	ITEM #	G/L ACCOUNT NAME	DESCRIPTION	CHECK#	AMOUNT
=====						
01-019196	SHAMROCK BUILDERS					
		I-72310	85 -580-1001	BUILDINGS & S EDC:INSTALL ACCESS EQUIP	117570	2,132.60
01-019635	SUPERIOR ALARMS					
		I-62310	85 -580-1001	BUILDINGS & S EDC:PROGRSS BILLING	117580	23,957.95
DEPARTMENT 580 ** INVALID DEPT **					TOTAL:	26,090.55

FUND 85 BIRDING CENTER CONSTRUCTI					TOTAL:	26,090.55

PACKET: 06746 Regular Payments 7-30-10

VENDOR SET: 01

FUND : 99 HURRICANE RECOVERY

DEPARTMENT: 599 HURRICANE RECOVERY

BANK: OPER

BUDGET TO USE: CB-CURRENT BUDGET

VENDOR	NAME	ITEM #	G/L ACCOUNT NAME	DESCRIPTION	CHECK#	AMOUNT
=====						
01-018509	SAM'S CLUB DIRECT					
		I-009940	99 -599-0102	LOCAL MEETING ITEMS FOR 1ST RESPONDER TEAM	117566	457.45
				DEPARTMENT 599 HURRICANE RECOVERY	TOTAL:	457.45

			FUND 99	HURRICANE RECOVERY	TOTAL:	457.45
					REPORT GRAND TOTAL:	359,816.57

**CITY OF SOUTH PADRE ISLAND
CITY COUNCIL MEETING
AGENDA REQUEST FORM**

MEETING DATE: August 4, 2010

NAME/DEPT.: Larry Homan, Finance Director

ITEM

Approve Tax Collection and Adjustment Report for taxes collected in the month of June 2010 by the Point Isabel Independent School District Tax Office.

ITEM BACKGROUND

RECOMMENDATIONS/COMMENTS

BUDGET/FINANCIAL SUMMARY

COMPREHENSIVE PLAN GOAL

COUNCIL ACTION

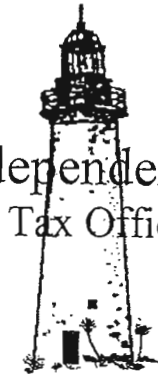
Motion: _____

Second: _____

Vote: Ayes: _____ **Nays:** _____

Abstentions: _____

Point Isabel Independent School District
Tax Office



Filomena Saenz, CTA
Tax Assessor – Collector

101 Port Road
Port Isabel, Texas 78578
Phone: (956) 943 - 0016
(956) 943 - 0017
Fax: (956) 943 - 0014
[Http://www.pi-isd.net](http://www.pi-isd.net)

July 12, 2010

**Mr. Larry Homan, Finance Director
Town of South Padre Island
P.O. Box 3410
South Padre Island, Texas 78597**

Dear Mr. Homan:

**Attached for your verification and presentation to the Board of Aldermen,
please find the Tax Collection and Adjustment Reports for taxes collected
June 1, 2010 through June 30, 2010.**

Respectfully,

A handwritten signature in cursive script that reads "Filomena Saenz". The signature is written in dark ink and is positioned above a horizontal line.

**Filomena Saenz, CTA
Tax Assessor-Collector**

**I, the above signed, do certify that the information contained in this report is true and
correct to the best of my knowledge.**

SOUTH PADRE ISLAND
MONTHLY REPORTS

	JUNE 2010 COLLECTIONS	JUNE 2010 YTD COLLECTIONS	JUNE 2009 YTD COLLECTION:
CURRENT 2009	\$ 74,572.04	CURRENT 2009	\$ 5,696,702.90
2008 & PRIOR	\$ 7,823.51	2008 & PRIOR	\$ 184,291.05
P & I	\$ 13,376.78	P & I	\$ 114,557.36
ATTORNEY'S FEE	\$ 1,378.03	ATTORNEY'S FEE	\$ 33,612.28
LATE RENDITION	\$ 200.93	LATE RENDITION	\$ 1,942.33
TOTAL	\$ 97,351.29	TOTAL	\$ 6,031,105.92
DISCOUNTS	\$ 56.39	DISCOUNTS	\$ (112,656.80)
			\$ (105,522.58)

	BEGINNING BALANCE AS OF 1-Oct-09	CURRENT MONTH ADJUSTMENTS	YTD ADJUSTMENTS	CURRENT MONTH COLLECTIONS	YTD COLLECTIONS	BALANCE AS OF 1-Jul-10
2009 TAX LEVY	\$ 5,946,300.31	\$ 2,026.83	\$ 130,154.66	\$ (74,572.04)	\$ (5,696,702.90)	\$ 379,752.07
2008 & PRIOR	\$ 494,975.56	\$ (72.09)	\$ (6,347.56)	\$ (7,823.51)	\$ (184,291.05)	\$ 304,336.95
TOTAL	\$ 6,441,275.87	\$ 1,954.70	\$ 123,807.10	\$ (82,395.55)	\$ (5,880,993.95)	\$ 684,089.02

COLLECTIONS	2009 TAX LEVY	\$ 5,946,300.31	2008 TAX LEVY	\$ 5,944,224.75
PERCENTAGE	COLLECTION	\$ 5,696,702.90	COLLECTION	\$ 5,710,615.80
		93.75%		94.03%

5-14

TOWN OF SOUTH PADRE ISLAND
YEAR TO DATE FROM OCTOBER 1, 2008 TO SEPTEMBER 30, 2009
COLLECTIONS

MONTH	2009	PRIOR	P & I	DISCOUNT	TOTAL	ATTORNEY'S	LATE RENDITIONS
Oct-09	\$ 2,877,136.91	\$ 39,699.93	\$ 12,437.31	\$ (85,830.24)	\$ 2,843,443.91	\$ 6,740.53	\$ 738.19
Nov-09	\$ 790,380.55	\$ 24,735.58	\$ 6,185.48	\$ (19,609.29)	\$ 801,692.32	\$ 3,925.67	\$ 190.06
Dec-09	\$ 604,056.98	\$ 15,385.18	\$ 8,146.26	\$ (6,604.32)	\$ 620,984.10	\$ 3,469.39	\$ 82.82
Jan-10	\$ 729,921.03	\$ 30,806.84	\$ 11,579.00	\$ (680.33)	\$ 771,626.54	\$ 5,582.30	\$ 135.89
Feb-10	\$ 328,780.45	\$ 17,385.16	\$ 10,697.51	\$ (27.11)	\$ 356,836.01	\$ 2,733.98	\$ 67.59
Mar-10	\$ 122,662.53	\$ 25,669.01	\$ 23,842.53	\$ 36.67	\$ 172,210.74	\$ 5,251.69	\$ 86.25
Apr-10	\$ 94,824.83	\$ 7,713.54	\$ 12,556.49	\$ 1.80	\$ 115,096.66	\$ 1,312.86	\$ 392.82
May-10	\$ 74,367.58	\$ 15,072.30	\$ 15,736.00	\$ 56.39	\$ 105,232.27	\$ 3,217.83	\$ 47.68
Jun-10	\$ 74,572.04	\$ 7,823.51	\$ 13,376.78	\$ (0.37)	\$ 95,771.96	\$ 1,378.03	\$ 200.93
Jul-10							
Aug-10							
Sep-10							
TOTA;	\$ 5,696,702.90	\$ 184,291.05	\$ 114,557.36	\$ (112,656.80)	\$ 5,882,894.51	\$ 33,612.28	\$ 1,942.33

5-15

FISCAL START: 10/01/2009 END: 09/30/2010 JURISDICTION: 0003 TOWN OF SOUTH PADRE ISLAND

CERT TAXABLE VALUE	ADJUSTMENTS	ADJ TAX VALUE	TAX RATE	TAX LEVY	PAID ACCTS
2,434,546,327	53,725,417	2,488,271,744	0.245610	6,076,454.97	8,278

YEAR	TAXES DUE	MONTH ADJ	ADJUSTMENT YTD	LEVY PAID	PAID YTD	BALANCE	COLL %	YTD UNCOLL
2009	5,946,300.31	2,026.83	130,154.66	74,572.04	5,696,702.90	379,752.07	93.75	0.00
2008	267,856.66	72.09-	6,208.50-	6,860.29	122,419.83	139,228.33	46.79	0.00
2007	92,161.75	.00	0.00	159.22	27,231.94	64,929.81	29.55	0.00
2006	38,330.39	.00	139.06-	804.00	13,011.07	25,180.26	34.07	0.00
2005	22,986.36	.00	0.00	0.00	6,665.42	16,320.94	29.00	0.00
2004	9,684.90	.00	0.00	0.00	4,032.29	5,652.61	41.63	0.00
2003	10,880.94	.00	0.00	0.00	2,642.20	8,238.74	24.28	0.00
2002	8,695.39	.00	0.00	0.00	1,836.82	6,858.57	21.12	0.00
2001	4,115.73	.00	0.00	0.00	575.62	3,540.11	13.99	0.00
2000	2,740.44	.00	0.00	0.00	156.94	2,583.50	5.73	0.00
1999	6,014.98	.00	0.00	0.00	1,418.84	4,596.14	23.59	0.00
1998	883.29	.00	0.00	0.00	0.00	883.29	0.00	0.00
1997	1,501.60	.00	0.00	0.00	0.00	1,501.60	0.00	0.00
1996	3,653.07	.00	0.00	0.00	314.04	3,339.03	8.60	0.00
1995	6,588.88	.00	0.00	0.00	1,329.53	5,259.35	20.18	0.00
1994	6,302.40	.00	0.00	0.00	1,329.53	4,972.87	21.10	0.00
1993	6,010.53	.00	0.00	0.00	1,326.98	4,683.55	22.08	0.00
1992	1,669.39	.00	0.00	0.00	0.00	1,669.39	0.00	0.00
1991	208.18	.00	0.00	0.00	0.00	208.18	0.00	0.00
1990	2,953.70	.00	0.00	0.00	0.00	2,953.70	0.00	0.00
1989	127.28	.00	0.00	0.00	0.00	127.28	0.00	0.00
1988	1,609.70	.00	0.00	0.00	0.00	1,609.70	0.00	0.00
****	6,441,275.87	1,954.74	123,807.10	82,395.55	5,880,993.95	684,089.02		0.00

5-16

ITEM

ITEM BACKGROUND

RECOMMENDATIONS/COMMENTS

BUDGET/FINANCIAL SUMMARY

COMPREHENSIVE PLAN GOAL

COUNCIL ACTION

Abstentions:

5-17

**CITY OF SOUTH PADRE ISLAND
CITY COUNCIL MEETING
AGENDA REQUEST FORM**

MEETING DATE: August 4, 2010

NAME/DEPT.: Joni Clarke, City Manager

ITEM

Presentation by Marie Garrett, Coastal Solutions regarding the Beach Stabilization Demonstration Project.

ITEM BACKGROUND

RECOMMENDATIONS/COMMENTS

BUDGET/FINANCIAL SUMMARY

COMPREHENSIVE PLAN GOAL

COUNCIL ACTION

Motion: _____

Second: _____

Vote: Ayes: _____ **Nays:** _____

Abstentions: _____

**CITY OF SOUTH PADRE ISLAND
CITY COUNCIL MEETING
AGENDA REQUEST FORM**

MEETING DATE: August 4, 2010

NAME/DEPT.: Darla A. Jones, Assistant City Manager

ITEM

Discussion and action to authorize the City Manager to execute agreements with various property owners to provide temporary parking lots during the months of August and September 2010 and the "summer months" in the future.

ITEM

BACKGROUND

The City Council passed ordinances 10-20 and 10-23 permitting temporary parking lots in the "C" and C-2" Zoning Districts during the summer months. We haven't had any property owners offer to set up temporary parking lots. In response to the lack of participation and to try to alleviate the visitor parking problems, staff has identified several properties and contacted most of the owners to discuss the idea of either:

- A) the City leasing the property on a temporary basis for a temporary parking lot, or
- B) allowing the property owner to start their own paid parking lot.

There have been several vacant lots identified as potential temporary parking lots. Those are:

- 1) Post Office
- 2) Old Rovon's site
- 3) City Hall
- 4) Garcia's
- 5) North of Chaos
- 6) Laguna Galleria property
- 7) Dr. Emma Gavito's Office
- 8) Vacant Property south of City Hall

RECOMMENDATIONS/COMMENTS

Staff recommends authorizing the City Manager to execute contracts with various property owners to use their properties as temporary parking lots.

BUDGET/FINANCIAL SUMMARY

Expenditures expected of approximately \$4,800, immediately if all property owners agree. Possible annual expense of \$8,600 for future years.

COMPREHENSIVE PLAN GOAL

None.

COUNCIL ACTION

Motion: _____

Second: _____

Vote: Ayes: _____ **Nays:** _____

Abstentions: _____

The City has restricted parking along the side streets between Gulf and Padre. We've attempted to resolve some of the parking problems by allowing those property owners with vacant lots to offer either free or paid parking without the required improvements (paving the lot, striping, etc...).

There have been several vacant lots identified as potential temporary parking lots. Those are:

- 1) Post Office
- 2) Old Rován's site
- 3) City Hall
- 4) Garcia's
- 5) North of Chaos
- 6) Laguna Galleria property
- 7) Dr. Emma Gavito's Office
- 8) Vacant Property south of City Hall

Also, parking on the side streets is permitted on the west side of Padre.

The cost to lease was figured based on the property taxes paid to the City divided by twelve months per year and a lease period of two months (August and September-full month leases). Here is a breakdown of the temporary lots, number of potential parking spaces and the cost to lease the property through Tuesday, September 7, 2010 (the day after Labor Day) and a potential cost for June-September (4 months) for future years.

<u>Location:</u>	<u>Owner:</u>	<u># Spaces:</u>	<u>2months:</u>	<u>4 months:</u>
Old Rován's Site	Elisha Azoulay	+/- 100	\$544.84	\$1,089.68
North of Chaos	Manny Monryal	+/- 90	*\$2,500	\$5,000
South of City Hall	Dorothy Novak	+/- 90	\$330.24	\$660.48
Garcia's		+/- 55	no response	
Dr. Gavito	Dr. Emma Gavito	15	\$0	
Post Office		+/- 100	no response	
City Hall	City of SPI	+/- 50	\$0	
Laguna Galleria	Tom Layton	145	\$900.14	\$1,800.28
Total:			\$4,820.06	\$8,550.44

*Note: Mr. Monryal stated this would be the minimum for which he would lease his property.

**CITY OF SOUTH PADRE ISLAND
CITY COUNCIL MEETING
AGENDA REQUEST FORM**

MEETING DATE: August 4, 2010

NAME/DEPT.: Rick Ridolfi, Council Member

ITEM

Discussion and action to approve the formation of a *SPI Wall of Honor* at City Hall and to approve the appointment a Steering Committee who will evaluate proposed applicants and be responsible for financing, fund raising, public relations and site preparation.

ITEM BACKGROUND

Each year, we consider and select distinguished members of our Community for consideration for the Rio Grande Valley Walk of Fame in McAllen. Few people who visit that Walk know our selections or why these citizens were singled out from SPI. We are pleased that we can list our local heroes who have made significant contributions to our Valley over the years. However, let us consider supplementing the McAllen's Rio Grande Valley Walk of Fame with our City giving prominent recognition to our citizens in a place on the Island, a place of recognition, stated in enduring terms as "*The SPI Wall of Honor*."

One of the marks of any communities is the recognition of individuals, living and deceased who have worked directly and behind the scenes to make our city a great place to live. Those folks who have made significant (both in terms of time and impact) contributions to the betterment of the community deserve the special recognition of its benefactors. South Padre Island, TX is a great place to live because these people cared enough to give energy, work and ideas to improve the quality of life, services and safety of the Community we call Home.

Our town is 37 years (April 10, 1973) old now. The goal is to include and honor the people who worked behind the scenes in business, in volunteering efforts, in organizations, in government and other endeavors that constitute our City as it is now. We should do this before all living memory is lost. *The SPI Wall of Honor* provides a way for the memory to become permanent. This specially designed wall offers a unique way to commemorate your recognition of people who have influenced in a lasting way the direction and quality of the City of SPI that makes our City what it is, what they have contributed in the past and what our city will be in the future as the future becomes our history too.

RECOMMENDATIONS/COMMENTS

1. It is recommended that a wall in City Hall be selected for *The SPI Wall of Honor*.
2. There should be a Steering Committee appointed with expertise in finance, fund raising, public relations, site preparation and legal matters to have this idea become a reality. The Steering Committee will evaluate the proposed applicants for this honor.
3. That April 10 is designated as the City's Founders Day and the inductions take place on Founders Day.
4. The City Manager develop a form to nominate a candidate for this honor and place the application on the City's Web Site and with the City Secretary. The City Secretary will submit the applicants for consideration of the Steering Committee who will make selections.

Rick Ridolfi 29 July 2010

BUDGET/FINANCIAL SUMMARY

COMPREHENSIVE PLAN GOAL

COUNCIL ACTION

Motion: _____

Second: _____

Vote: Ayes: _____ Nays: _____

Abstentions: _____

**CITY OF SOUTH PADRE ISLAND
CITY COUNCIL MEETING
AGENDA REQUEST FORM**

MEETING DATE: August 4, 2010

NAME/DEPT.: Joni Clarke, City Manager

ITEM

Discussion and action to enter into an agreement with HillCo Partners for government consulting services for one year beginning August 15, 2010 in the amount of \$144,000 plus expenses with 50% to be paid by the City's General Fund, 25% to be paid by the Hotel Motel Tax Fund and 25% to be paid by EDC. Cost to the General Fund would be \$72,000 (not including expenses) and \$36,000 each to the EDC and Hotel Motel Tax Fund.

ITEM BACKGROUND

RECOMMENDATIONS/COMMENTS

BUDGET/FINANCIAL SUMMARY

COMPREHENSIVE PLAN GOAL

COUNCIL ACTION

Motion: _____

Second: _____

Vote: Ayes: _____ **Nays:** _____

Abstentions: _____



GOVERNMENTAL CONSULTING AGREEMENT

Agreement entered into as of August 15, 2010 between the City of South Padre Island and the Economic Development Corporation of South Padre (hereinafter referred to as the "Client") and HillCo Partners (the "Consultant"), with respect to government consulting services.

In consideration of the mutual promises set forth below, the Client and the Consultant agree as follows:

- 1) **Term.** The term of this Agreement commences on August 15, 2010 and shall continue through August 14, 2012 unless terminated by either party pursuant to Paragraph 7.
- 2) **The Services.** The responsibility of the Consultant under this agreement shall be as follows:

LEGISLATIVE LOBBYING EFFORT

In addition to specific work on the new causeway project, during the legislative session we propose the following general legislative and regulatory consulting services to South Padre Island:

- Develop a political strategy based on the Client's goals and objectives;
- Work with the client on specific legislation to be sought in the 2011 Texas Legislative Session.
- Continue to confer with and advocate your position with the Governor and his staff and other executive personnel in relation to the new causeway project and other areas of importance to the Client;
- Maintain a continuing relationship with the members and key officers and employees of the House and Senate on your behalf;
- Monitor, daily, all priority legislation introduced and administrative rules proposed;
- Provide periodic status reports on legislation and administrative actions of interest;
- Attend legislative committee hearings, daily sessions in the House and Senate, and report key information to the Client;
- Represent the Client in meetings of legislative committees, state agencies, or individual legislators, as requested;
- Conduct on-site visits to South Padre Island to educate Economic Development Corporation officials, city officials, city staff, and Chamber officials on the legislative process and the Client's agenda;

7-2

- Attend crucial meetings with Economic Development Corporation officials, city officials, city staff, and Chamber officials if needed;
- Identify the most influential or effective sponsor in both houses for proposed legislation, appropriation riders and/or amendments;
- Advise on the preparation and submission of testimony before legislative committee and state agencies;
- Confer with legislative leadership on committee and subcommittee activities as appropriate;
- Work with legislators in passing, amending, or defeating legislation; and
- Provide assistance on PAC committee organization and contributions, if appropriate.

SEEKING STATE FUNDING FOR CLIENT TOURISM DEVELOPMENT AND ISLAND ENHANCEMENT

- Work with the client to identify state funding for tourism attraction to South Padre Island.
- Work with the client to identify beach enhancement funding and infrastructure improvement funding.
- Work with client to seek additional funding for enhancement of the birding center.
- Work with the General Land Office to secure beach nourishment funding and other beach enhancement funding.
- Work with client to identify and seek any additional funding available to the City of South Padre Island and its Economic Development Corporation.

NORTH CAUSEWAY PROJECT

The following are items that the Consultant will be involved and take action in regard to a future causeway to South Padre Island:

- Continue to monitor all significant action, in regard to the Causeway project, by governmental agencies including Texas Department of Transportation (TxDOT), Cameron County Regional Mobility Authority, and Cameron County.
- Continue to meet with key governmental officials and agency officials to communicate South Padre Island's stance on the causeway project.
- Continue to work with South Padre Island leaders to contact and lobby other cities' officials in the Valley to communicate the importance of the North Causeway location.
- Continue to prepare South Padre Island leaders for testimony in all public forums involving the Causeway project.
- Continue to plan on-site visits for state elected officials and governmental agency officials with South Padre Island officials to educate them on the benefits of the North Causeway location.
- Continue an on-going dialogue with South Padre Island leaders as to the status of efforts.

POST LEGISLATIVE LOBBYING EFFORTS

Following the Texas 2011 Legislative Session, Consultant will continue to work on the North Causeway project and will monitor all interim legislative activity that affects the city and the EDC. Periodic consultation and reporting will be maintained during this period.

The consultant will work with South Padre Island officials on maintaining an excellent relationship with the Cameron County RMA and will monitor all actions of this body. The consultants will also continue to maintain contacts with state and local officials on matters affecting the city and the North Causeway project.

The consultant will work with city staff in the interim on projects identified in the "2011-2012 Legislative Agenda and Action Items" developed by the consultant and the City Manager.

All Services to be provided hereunder will be undertaken only as directed by the Client or staff members designated by the Client. The Consultant agrees in performing the Services to work with such individuals and third parties as the Client may designate from time to time. The Consultant will not subcontract the performance of the Services under this Agreement without the prior written consent of the Client.

- a. The Consultant will provide copies of any written materials prepared in connection with the Services to the in-house legal staff and appropriate designee(s) and shall report to those individuals and to the Client periodically in writing.

3) Confidentiality.

- (a) The Consultant will maintain at all times the confidentiality of all information received in connection with the Services performed hereunder regarding the business and activities of the Client.
- (b) The Consultant acknowledges and agrees that any materials referring to any existing or future publications or programs of the Client contain proprietary material; that such materials have been provided to the Consultant in strictest confidence, solely for the purposes of review and use in completing assignments; that no divulgence or reproduction of any such materials shall be made without the prior written permission of the Client; and that any other person who is given access to any of the foregoing materials will be put on notice, in writing, of the terms of this Agreement pertaining to confidentiality. Notwithstanding the foregoing, the Consultant may not, in the course of performing its duties hereunder, disclose any publicly available information about the Client without prior permission and may not make oral representations about the Client.

- (c) All written materials and computer files submitted to the Consultant by the Client shall be returned to the Client by the Consultant, postage prepaid, within ten (10) days after demand by the Client.

4) **Payment.**

- (a) In full consideration of the Consultant's satisfactory performance of all Services to be rendered by the Consultant under this Agreement, the Client agrees to compensate the Consultant in the amount of Twelve Thousand Dollars (\$12,000) per month beginning August 15, 2010 and extending through the term of this Agreement. The City of South Padre Island and the Economic Development Corporation of South Padre Island will advise the consultant how much to bill each separate entity.
- (b) The Client will reimburse the Consultant for reasonable travel expenses, including economy airfare, car rental, lodging and meals incurred in the course of performing the Consultant's duties hereunder. The Client will also reimburse the Consultant for certain office expenses such as postage, legislative reporting services, telephone and express mail costs incurred during the performance of the Consultant's duties not to exceed \$500 per month, except during the Legislative Session, when billing is not to exceed \$1,000. Reimbursement will be made in accordance with the Client's billing policies and based upon submission and approval of appropriate receipts or other reasonable verification of expenses incurred. These expenses will be billed to either the Economic Development Corporation or the City or both depending on the nature of the event and sponsoring entity.

- 5) **Work Product.** Any recommendations, information, approaches, suggestions, concepts, ideas, and any and all contributions received from the Consultant may be used by the Client without compensation, except for that expressly hereinabove provided.

- 6) **Independent Contractor.** The Consultant is an independent contractor and is not authorized to commit or obligate the Client in any manner whatsoever. This Agreement does not constitute an employer-employee relationship between the Consultant and the Client, and therefore the Consultant is not entitled to participate in or receive any employee benefits of the Client, such as, but not limited to, insurance, pension, disability, medical, etc. The Consultant recognizes the Client's right to withhold any monies due the Consultant, for tax or other purposes, should the Client be required to do so by law.

- 7) **Termination.** The Client may terminate this Agreement upon thirty (30) days written notice for any reason without obligation, and the Consultant will be entitled (i) to retain all sums previously paid, (ii) to payment of all outstanding unpaid approved invoices, and (iii) to payment for services through the date that the

9-5

Consultant receives the notice of termination upon receipt and approval in accordance with this Agreement of a statement covering such services.

- 8) **Warranty and Indemnity.** The Consultant warrants and represents that it has the full right, power and authority to enter into this Agreement and to perform legislative and executive branch governmental consulting and public relations services in the State of Texas. The Consultant will file all notices as required by law. The Consultant will indemnify and hold the Client harmless from and against any and all claims, damages, liabilities, costs, and expenses, including legal expenses and reasonable attorney's fees, arising out of any breach of the foregoing provisions, warranties and representations.
- 9) **Cost of Expert Witnesses and Studies to Support Positions.** The Client will bear all costs of "expert witnesses" hired to make presentations to legislative and governmental bodies. The Client will also bear all costs of studies undertaken to advance the Client's positions in front of the legislative and governmental bodies. No witnesses are to be retained or studies undertaken without prior agreement of the Client.
- 10) **Miscellaneous.** The Consultant may not assign this Agreement or any of the Consultant's obligations hereunder. This Agreement will be deemed made in the state of Texas and shall be subject to and construed in accordance with the laws of the state of Texas applicable to agreements to be performed wholly therein; merges all prior representations and understandings; and constitutes the entire understanding between the parties concerning the subject matter hereof. No modification of this Agreement shall be effective unless in writing and signed by both parties.
- 11) **Lobby Activity; Conflict of Interest.**
 - (a) The Texas ethics law and rules adopted by the Texas Ethics Commission require the Consultant to report compensation or reimbursement paid to Consultant for the purpose of directly communicating with members of the legislative or executive branch. Texas Ethics Commission Rules provide that a registrant receiving compensation or reimbursement for purposes other than lobby activities may reasonably determine the amount of compensation attributable to lobby activities and report only that amount. The rules define lobby activity as "Direct communication with one or more members of Texas legislative or executive branch to influence legislation or administrative action and activities in preparing for such direct communication." The statutory term "lobby activity" does not include, for example, the following activities performed on the Client's behalf:
 - Any effort to influence purchasing decisions by a state agency
 - Daily monitoring of legislation and/or executive actions
 - Communication with the Client on many strategic subjects
 - Preparation and delivery of status reports, newsletters, and other items of interest

9-6

- Giving sworn testimony before executive or legislative bodies
 - Legal consultation, briefings and documentation
 - Analysis of political races and fundraising efforts on behalf of PACs and/or individual candidates
 - Attending and preparing for board meetings
 - Negotiation sessions
 - Arranging of meetings with various state officials to brief them on areas of interest to the Client
 - Any other action taken which is not designed specifically to influence legislative or executive action.
- (b) The Consultant will allocate on a reasonable basis, as allowed by the rules, the amount of the retainer paid to the Consultant that is being paid for "lobby activities". Based upon Consultant's experience representing other clients, the Consultant believes 40 percent would be a reasonable estimate of the monthly retainer attributable to "lobby activities." It is understood and agreed that the Consultant's activities will be monitored from time to time so that any change in the amount of time spent on lobby activities as defined by the rules of the Texas Ethics Commission will be detected.
- (c) Attached to this Agreement is a list of clients for which the Consultant engages in lobby activities. The parties acknowledge that the law provides that a registrant may represent multiple clients with the client's consent after full disclosure of the possible effects of that representation on the registrant's professional judgment. The consultant confirms that it has disclosed to the Client such information as is necessary for the client to agree and consent to the representation of all the clients on the attached list, and the Client confirms that it so agrees and consents.

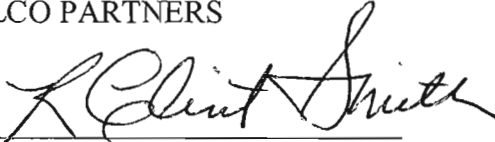
Should any other services relating to the general area of public relations become necessary or warranted such as event management for conventions, openings, meetings and seminars or development of interactive media for presentations or other communications, a separate budget for these services may be negotiated by the parties hereto.

EXECUTED as of the date first set forth above.

HILLCO PARTNERS

SOUTH PADRE ISLAND

By: _____

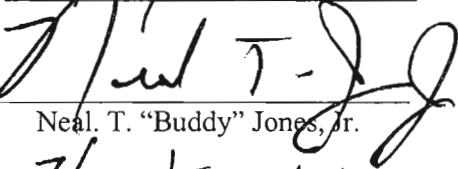


R. Clint Smith

Date: _____

7/16/2010

By: _____



Neal T. "Buddy" Jones, Jr.

Date: _____

7/19/2010

By: _____

Title: _____

Date: _____

ECONOMIC DEVELOPMENT
CORPORATION OF SOUTH PADRE
ISLAND

By: _____

Title: _____

Date: _____

HillCo Partners

Lobby Clients – July 2010

Abilene Chamber of Commerce
Advancement Via Individual Determination
Alamo Community College District
Alcoa
Allergan
American Association of Professional Landmen
Amgen
AMS Staff Leasing
Amylin Pharmaceuticals
Ash Grove Cement
Astellas Pharma US, Inc.
AT&T
BSS, LLC
BEPCO LP
Bayer
Blue Cross Blue Shield of Texas
Brazos River Authority
Carfax Inc.
Chase Power Development LLC
Children's Hospital Association of Texas
City of Abilene
City of Arlington
City of Cedar Park
City of Corpus Christi
City of Dallas
City of Forney
City of Frisco
City of Irving
City of Midland
City of North Richland Hills
City of South Padre Island
Community Education Partners
Community Loans of America
Compass Bank
Continental Airlines
Convergys Corp.
Cook Children's Hospital
CPL Retail Energy LP
Crown Cork & Seal Co.
Cyberonics
Daiichi Sankyo Inc.
Daimler Trucks North America (Freightliner)
Dallas County Hospital District
Dallas Police and Fire Pension System
Deloitte LLC
Direct Energy Business LLC

Direct Energy LP
Distilled Spirits Council of the U.S. (DISCUS)
Driscoll Children's Hospital
Eastman Chemical -Texas Operations
Educational Testing Services
El Paso Water Utilities Public Service Board
Erickson Retirement Communities
Farmers Group, Inc.
Fast Growth Schools Coalition
Federal Express
Flint Hill Resources
Fluor
FORBA Holdings LLC
Fortune Brands Home & Security
FPL Group
Georgia Pacific LLC
GEXA Energy
Goldman Sachs
Guadalupe-Blanco River Authority
Guardian Home Care Holdings Inc.
Health Management Systems
Health E Systems LLC
HEB Grocery Company
Hilltop Holdings Inc.
Houghton Mifflin Harcourt Publishing Company
Houston Municipal Employees Pension System
Houston Police Officers' Pension System
IESI TX Operations
Intel Corporation
INVISTA
Javelin Capital Partners
Jones Lang LaSalle Brokerage Inc.
Koch Companies Public Sector LLC
Koch Industries Inc.
Lake View Management & Development District
Lone Star Transmission LLC
Matrix Healthcare Services, Inc.
McKesson Corporation
Medcath, Inc.
Med Immune Inc.
Menninger Clinic
Microsoft
Molina Healthcare Inc.
National Lloyds Insurance
NextEra Energy Resources
NFL Enterprises LLC dba NFL Network

9-9

HillCo Partners
Lobby Clients – July 2010

Novartis Pharmaceuticals Corporation
Optinuity Alliance Resources (a company of
MBIA)
PBS&J
Pernix Therapeutics
Perry Homes
Pfizer
Pharmaceutical Research & Manufacturers of
America
Popp and Gray
Psychiatric Solutions Inc.
Radio Shack
Raise Your Hand for Public Schools
Reckitt Benckiser Pharmaceuticals
Rocket Ball Inc
Saint Luke's Episcopal Health Systems
San Jacinto River Authority
Sandlot
SavaSenior Care Administrative Service LLC
Scientific Learning
Sharps Environmental
Shelton Ogle Enterprises
South Padre Island Economic Development Corp.
Southwest Schools
Speedway Motor Sports Inc.
Tarrant County Hospital District
Tarrant Regional Transportation Coalition
Tenet Healthcare Corp.
Texans for the Arts
Texas Association of Broadcasters
Texas Association of Property Tax Professionals
Texas Association of Public Employee
Retirement Systems
Texas Children's Hospital
Texas Daily Newspaper Association
Texas Irrigation Council
Texas Oncology
Texas School Alliance
Texas Stadium Corporation etal
Texas State Athletic Trainers Association
Texas Waterway Operators Association
The GEO Group Inc.
Travis County Hospital District
United States Office of Bankruptcy
United Surgical Partners International
Western Refining Inc.
White Stallion Energy Center
Williams Scotsman

9-10

**CITY OF SOUTH PADRE ISLAND
CITY COUNCIL MEETING
AGENDA REQUEST FORM**

MEETING DATE: August 4, 2010

NAME/DEPT.: Dan Quandt, CVB Executive Director

ITEM

Discussion and action to award bid for purchase and installation of two 300 Ton Trane screw chillers for \$145,000, plus purchase of five year extended warranty for \$8,500/year and one year service contract for \$7,500.

ITEM BACKGROUND

The price is less than purchase of one new chiller. These chillers were installed by never operated at Ocean Tower. The second chiller will back up the primary chiller and will assist when building is expanded. There is one year of warranty remaining of the chillers.

RECOMMENDATIONS/COMMENTS

Recommend approval

BUDGET/FINANCIAL SUMMARY

2009/2010 CVB budget was amended to accommodate this request. The total price is less than the \$200,000 budgeted.

COMPREHENSIVE PLAN GOAL

Maintaining City's physical plant

COUNCIL ACTION

Motion: _____

Second: _____

Vote: Ayes: _____ **Nays:** _____

Abstentions: _____



SOUTHERN MECHANICAL AIR CONDITIONING

1820 East Sugarcane Rd.
Weslaco, TX 78596
Office: (956) 447-7900
Fax: (956) 447-8596

southern_mechanical@yahoo.com

Project: **South Padre Island Convention & Visitor Bureau**

Bid Date: 7/26/2010

OUR PRICE INCLUDES: HVAC WORK

We are proposing a 300 Ton Trane Screw Chiller, that has never been started and has 1 year Compressor Warranty left. This Chiller was removed from the OceanTower building. Please note that the original price for 300 Ton Trane Screw Chiller is \$195,000.00. See below breakdown.

Breakdown:

Qty (2) 300 Ton Trane Screw Chiller **\$90,000.00**

Labor to remove existing Chiller from Mechanical Room
Labor to Install Primary Chiller and Secondary Chiller
Labor to remove ductwork that was removed for chiller installation.
Material and Labor for Concrete Slab for Secondary chiller
Material and Labor for Re-piping of Secondary Chiller
Electrical Power to use the secondary chiller in alternating fashion (Only one Chiller to be used at a time)
Material to replace ductwork that was removed for chiller installation **\$55,000.00**

Note: This additional Chiller can be used as an Emergency Chiller or can be used for any additions made to the building in the future.

OUR PRICE EXCLUDES:

1. Work by other trade such as:
 - a. Painting
 - b. Cutting and patching of pavement (Concrete), floors, walls, ceiling, or roofs unless required because of SMAC error in layout of installation.
2. Concrete structural supports and air handlers wooden platforms.
3. Bond Premium. *(Southern Mechanical Air Conditioning would be more than happy to furnish a T listed Subcontract Bond but the premium is not included.)*
4. Utility bills such as water, electrical power, etc.
5. Trash haul off.

BASE BID: HVAC PRICE IS : **\$ 145,000.00**

Alt 1: (Optional) 5 Year Extended Warranty: \$ 8,500 PER YEAR.

Alt 2: (Optional) Service Contract for 1 Year
(3 PM's Per Year) \$ 7,500

*** Any questions concerning the bid information please call David Alanis or Juan Estrada at (956) 447-7900.

1240 North Vo Tech Drive, Suite F
Weslaco, Texas 78596
956-447-1795 - P
956-969-0769 - F



14 July 2010

Southern Mechanical Air Conditioning
1820 E. Sugarcane
Weslaco, Texas 78596
(956) 447-7900 (P)
(956) 447-8596 (F)
ATTN: Mr. David Alaniz

Subject: 300T Air-Cooled Screw Chillers

Mr. Alaniz:

This letter is to verify the two 300 ton trane air cooled chillers (serial numbers: U07E04079 & U07E04080) you currently own have not been factory started. These chillers were installed, but never started up on a previous project. Upon visual inspection, the chillers appear to be in good condition. Some cosmetic touch up will be necessary, but we have provided you with factory paint that should handle it.

Any original warranties from Trane on above referenced units are null and void. Additional warranty and service agreements can be purchased from Trane upon request; preferably prior to when units are started.

Please let me know if you need more information.

Sincerely,

A handwritten signature in dark ink, appearing to read "R. Garza", written over a horizontal line.

Rigoberto Garza
The Trane Company
1240 N. Vo Tech Drive
Weslaco, TX 78596
(956) 447-1795 (P)
(956) 969-0769 (F)

10-3



Water-Cooled Chiller Submittal

Trane
A Division of American Standard Inc.

Prepared For:
Southern Mechanical, Inc.

Date: June 22, 2006

Job Name:
Ocean Towers Condominiums

Trane is pleased to provide the enclosed submittal for your review and approval.

Product Summary

Qty	Product
2	Water-cooled chillers

The attached information describes the equipment we propose to furnish for this project, and is submitted for your approval.

Ken Wertz
Trane
3650 Highpoint St.
San Antonio, TX 78217-2892
Phone: (210) 657-0901
Fax: (210) 657-1761

10-4

10-5

Table Of Contents

Product Summary 1

Water-cooled chillers (Item A1)

 Tag Data 4

 Performance data..... 5

 Mechanical Specifications 6

 Dimensional data 8

 Weight, clearance & rigging diagram 9

 Field wiring diagram 10

(2) Water-cooled chillers with the following options:

Unit mounted solid state starter with:

- Magnetic Contactors
- PT's and CT's for remote display of amperage, voltage, and kW at the chiller control panel
- Control power transformer
- Power supply monitoring and safety via coordination with the chiller control panel
- Under / over voltage protection
- NEMA 1 enclosure with terminal block for main power connection (460 / 3 / 60)
- UL Listed

Microprocessor unit control, safety, and diagnostic panel with clear language

English/Spanish display

1" Armaflex insulation on evaporator, economizer, and suction elbow

1" Diameter internally enhanced copper evaporator tubes with 0.028" thick tube wall

3/4" Diameter internally enhanced copper condenser tubes with 0.028" thick tube wall

Three pass 300 psi standard water boxes with victaulic connections on the evaporator

Two pass 300 psi standard water boxes with marine connections on the condenser

Electronic expansion valves

Neoprene Isolators (standard 3/16" pads) (Field Installed)

Leak checking, evacuation, dehydration, and charging

Operational charge of refrigerant and oil

Refrigerant isolation valves

Factory startup and logging of the machine

(2) 300 psi vapor-proof flow switches (Field installed by Mechanical Contractor)

1st year parts, refrigerant, and labor warranty on the whole unit

2nd -5th Year replacement compressor warranty – no labor

Notes: Rigging, installation, chilled water piping specialties, and all other options, products, services, and warranties not listed are excluded by Trane.

10-7

Performance data

Description	Value	Unit of Measure
Base Unit Module		
Capacity	300.1	tons
Unit power	178	kW
Efficiency	0.593	kW/ton
NPLV	0.653	kW/ton
Full load sound pressure (ARI Condition)	83	dBA
Refrigerant charge (HFC-134a)	625.0	lb
Evap entering temp	59.00	F
Evap leaving temp	44.00	F
Evap flow rate	477.90	gpm
Minimum evap flow rate	404.00	gpm
Evap fluid concentration	0.00	%
Evap fluid freeze point	32.00	F
Evap pressure drop	4.50	ft H2O
Evap fouling factor	0.00010	hr-sq ft-deg F/Btu
Cond entering temp	85.00	F
Cond leaving temp	95.00	F
Cond flow rate	846.50	gpm
Cond fluid concentration	0.00	%
Cond pressure drop	11.30	ft H2O
Cond fouling factor	0.00025	hr-sq ft-deg F/Btu
Run load amps	258.9	A
Min circuit ampacity	323.6	A
Max overcurrent protection	500.00	A
Starter expected inrush	727.00	A
Shipping weight	16168.0	lb
Operating weight	17560.0	lb
Motor locked rotor amps	1453.00	A

10-8

Mechanical Specifications - Water-cooled chiller**Item: A1 Qty: 2 Tag(s): CH-1, CH-2****General**

Exposed metal surfaces are painted with air-dry beige direct to metal single component paint prior to shipment. Each unit ships with a full operating charge of refrigerant and oil. Molded neoprene isolation pads are supplied for placement. Start-up and operator instruction by factory trained service personnel is included.

Chiller complies with ASME Pressure Vessel Code. ASME nameplates are attached to applicable pressure vessels including oil separators.

Compressor

Semi-hermetic, direct-drive, rotary compressor with: capacity control slide valve and differential refrigerant pressure oil flow system. Four pressure lubricated rolling element bearing groups support the rotating assembly. Motor is a suction gas cooled, hermetically sealed, two-pole, squirrel cage induction-type.

Evaporator

Shells are carbon steel plate. Evaporator is designed, tested and stamped in accordance with ASME Code for refrigerant side working pressure of 200 psig. All tube sheets are carbon steel. Evaporator tubes are individually replaceable. Tube are externally finned, internally enhanced seamless copper with lands at both tube supports.

Water pass arrangements are with grooved connections 300 psig waterside. Connections are left-handed. Waterside is hydrostatically tested at 1 1/2 times design working pressure.

Condenser

Shells are carbon steel plate. Condenser is designed, tested and stamped in accordance with ASME Code for refrigerant side working pressure of 200 psig.

All tube sheets are carbon steel. Condenser tubes are individually replaceable. Tubes are externally finned; internally enhanced seamless copper with lands at both tube sheets. Condenser tubes are 3/4 inch (19.05 mm) in diameter. Tubes are mechanically expanded into tube sheets and mechanically fastened to tube supports. A baffle prevents direct impingement of compressor discharge gas upon the tubes.

Condenser is designed for 300 psig waterside. Connections are left-handed. Waterside is hydrostatically tested at 1 1/2 times design working pressure.

Condenser water boxes are fabricated with grooved pipe marine connections.

Refrigerant Circuit

An electronically controlled expansion valve maintains proper refrigerant flow. Isolation valves are added to the refrigerant circuit to provide means of isolating the refrigerant charge in the condenser for installation separation or servicing.

Control Panel

The microprocessor-based control panel is factory installed and tested. A control power transformer factory-installed with the starter powers the control system. The controller will load and unload the chiller via control of the compressor slide valve.

Microprocessor based chilled water reset based on return water temperature is provided.

The CH530 utilizing the Adaptive Control (TM) microprocessor automatically takes action to prevent unit shutdown due to abnormal operating conditions associated with low evaporator refrigerant temperature, high condensing temperature, and motor current overload. If the abnormal operating condition continues and the protective limit is reached, the machine will be shut down.

The panel features machine protection shutdown requiring manual reset for: low evaporator refrigerant pressure, high condenser refrigerant pressure, low oil flow, critical sensor or detection circuit faults, motor current overload, high compressor discharge temperature, communications lost between modules, electrical distribution faults, phase loss, phase imbalance, phase reversal, external and emergency stop, and starter transition failure.

The panel features machine protection shutdown with automatic reset when condition is corrected for momentary power loss, under/over voltage, and loss of evaporator or condenser water flow.

10-9

Over 100 diagnostic checks are made and displayed when a fault is detected. The display indicates the fault, the type of reset required, the time and date the diagnostic occurred, the mode in which the machine was operating at the time of the diagnostic, and a help message. A diagnostic history will display the last 20 diagnostics with the time and date of their occurrence.

Unit is provided with under/over voltage protection, with actual volts shown on the clear language display.

Operator Interface

Factory mounted to the door of the control panel, and tested after build completion, the operator interface has an LCD touchscreen display for operator input with scrolling tabs for tabulated sets of information. All information is displayed in clear language format. An evaporator report, condenser report, compressor report, ASHRAE report, operator settings, service settings, service tests, and diagnostics may be accessed. Some service settings and tests are accessed through the TechView service tool.

The data contained in the evaporator, condenser, compressor, and ASHRAE reports includes: Setpoints, water and air temperatures, refrigerant levels, refrigerant temperatures, superheat, refrigerant approach, oil pressure, flow switch status, EXV position, head pressure control command, compressor starts and run-time, line voltage, line phase percent RLA, Amps, and Volts.

Chilled Water Reset

Chilled water reset based on return water temperature is provided. This includes display of chilled water temperature.

Unit Mounted Starter

Starter is a Solid State configuration. Starter reduces expected inrush to approximately 50 percent of rated motor Locked Rotor Amps. NEMA 1 type enclosure with top power wiring access and three-phase solid-state overload protection. The starter is factory mounted and completely prewired to the compressor motor and the control panel. Factory installed and wired 600VA-control power transformer provides all unit control power (120 Vac secondary) as well as CH530 module power (24 Vac secondary).

A standard-interrupting molded-case circuit breaker is provided with through-the-door handle to disconnect the main power, and comes pre-wired from the factory, with terminal block power connections.

Insulation

Low temperature surfaces are covered with factory installed 3/4 inch (19.05 mm) Armaflex II or equal ($k=0.28$) insulation, including the evaporator and water boxes, suction line, and motor housing. 3/8" foam insulation will be used on the liquid level sensor and gas pump assembly, including piping. Lifting lugs, base plates and service valves will not include insulation. Insulation will be painted to match the chiller.

10-10

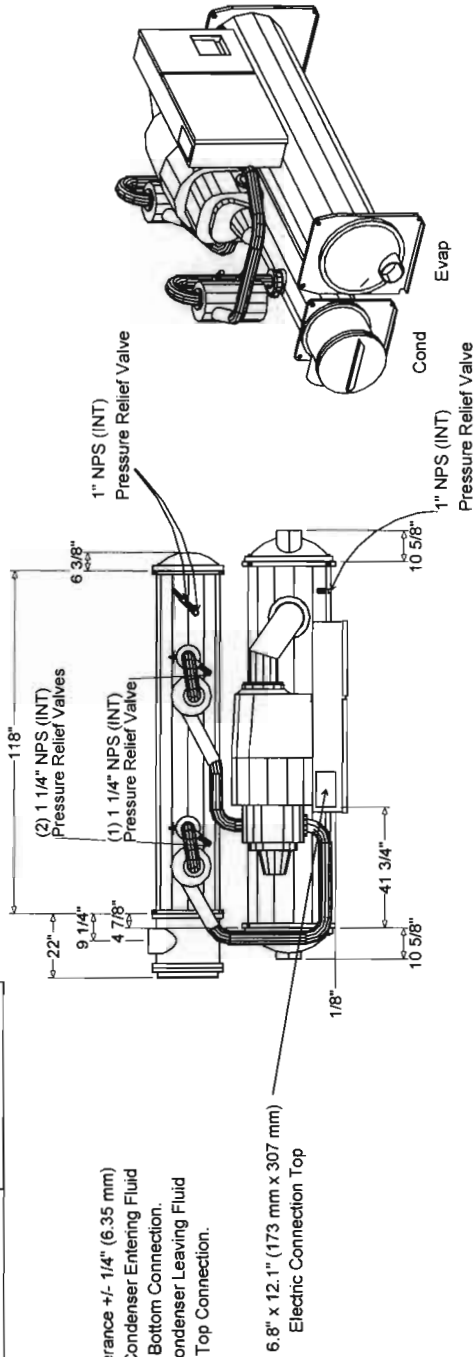
Dimensional data

Item: A1 Qty: 2 Tag(s): CH-1, CH-2

To Be Used With Circuit Breakers	
250A	TOPSS RLA = 0 - 200
350A	TOPSS RLA = 200.1 - 280
400A	TOPSS RLA = 280.1 - 320
500A	TOPSS RLA = 320.1 - 400
600A	TOPSS RLA = 400.1 - 476
700A	TOPSS RLA = 476.1 - 560
800A	TOPSS RLA = 560.1 - 640
1000A	TOPSS RLA = 640.1 - 800
	(2) 30 - 500 MCM
	(2) 30 - 500 MCM
	(2) 30 - 500 MCM
	(2) 30 - 500 MCM
	(2) 30 - 500 MCM
	(3) 1/0 - 500 MCM
	(3) 1/0 - 500 MCM
	(4) 250 MCM - 500 MCM

Terminal/Disconnect Connection Size	AMPS
-------------------------------------	------

Electrical Lug Size L1-L3 (Each Phase)	NPS Pipe Size	
Evaporator Water Connection Size	8	
Condenser Water Connection Size	8	
Short Circuit Withstand Rating (RMS Symmetrical AMPS)	30000	



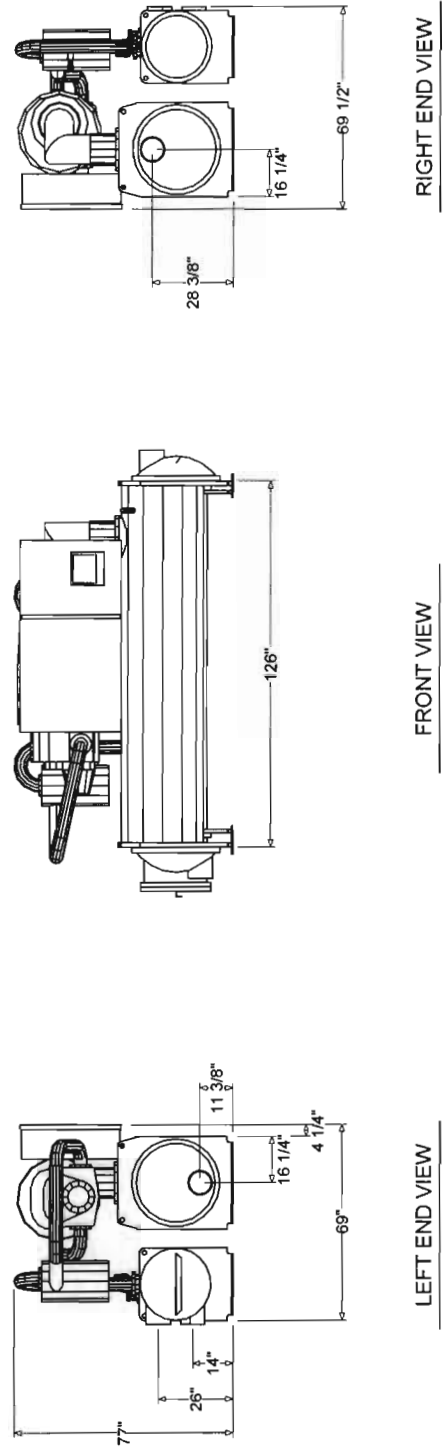
NOTES:

1. Dimensional Tolerance +/- 1/4" (6.35 mm)
2. Evaporator and Condenser Entering Fluid Connection is the Bottom Connection.
3. Evaporator and Condenser Leaving Fluid Connection is the Top Connection.

6.8" x 12.1" (173 mm x 307 mm)
Electric Connection Top

PLAN VIEW

ISOMETRIC VIEW



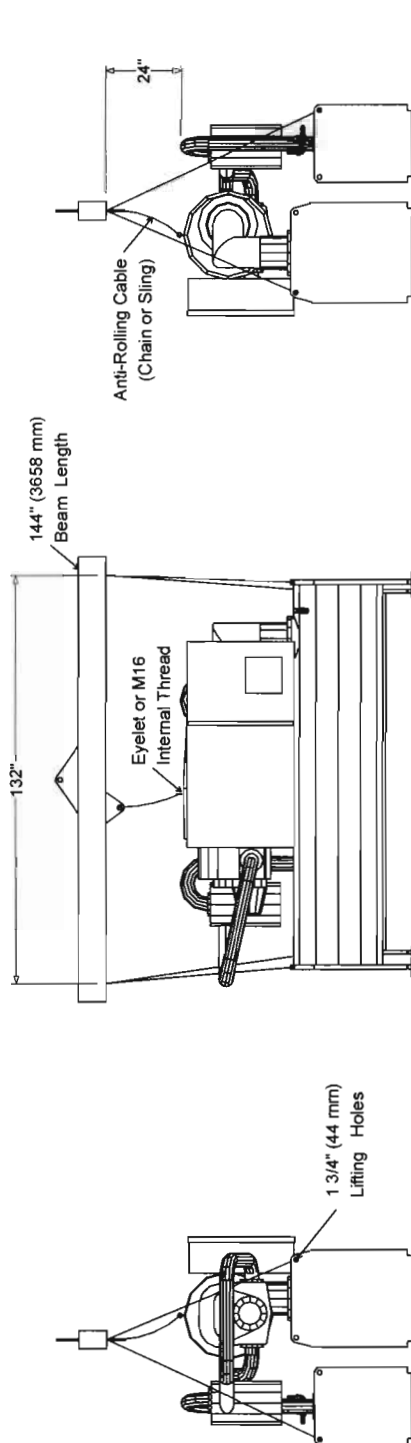
LEFT END VIEW

FRONT VIEW

RIGHT END VIEW

Weight, clearance & rigging diagram

Item: A1 Qty: 2 Tag(s): CH-1, CH-2



RIGHT END VIEW

FRONT VIEW

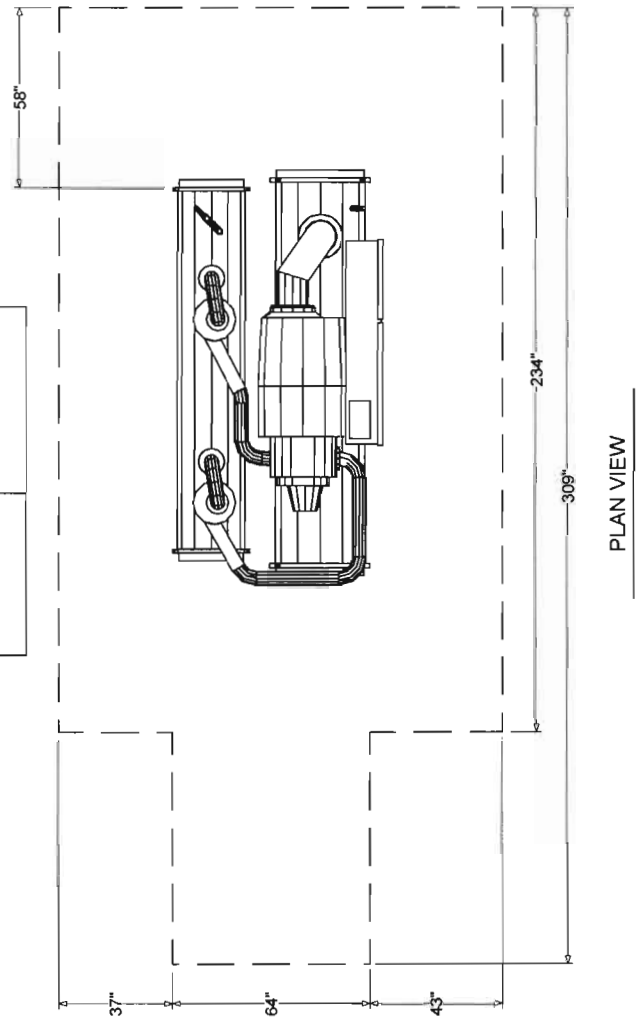
LEFT END VIEW

NOTES:

1. DO NOT USE CABLES (CHAINS OR SLINGS) EXCEPT AS SHOWN. OTHER LIFTING ARRANGEMENTS MAY CAUSE EQUIPMENT DAMAGE OR SERIOUS PERSONAL INJURY.
2. EACH OF THE CABLES (CHAINS OR SLINGS) USED TO LIFT UNIT MUST BE CAPABLE OF SUPPORTING THE ENTIRE WEIGHT OF THE UNIT.
3. LIFTING CABLES (CHAINS OR SLINGS) MAY NOT BE THE SAME LENGTH. ADJUST AS NECESSARY FOR EVEN LEVEL LIFT.
4. ADJUST AS NECESSARY USING SINGLE POINT LIFT. TO PREVENT UNIT FROM ROLLING, ATTACH CABLE (CHAIN OR SLING) WITHOUT ANY TENSION AS SHOWN.
5. DO NOT USE FORKLIFT UNIT TO MOVE OR LIFT.
6. IF UNIT IS DISASSEMBLED, SEE SERVICE BULLETIN RTHC-SB-2 FOR LIFTING AND RIGGING OF COMPONENTS.

NOTE:

ALLOW 36" OF CLEARANCE ABOVE THE STARTER ELECTRICAL CONNECTION DOOR.



PLAN VIEW

10-12

Item: A1 Qty: 2 Tag(s): CH-1, CH-2



- 2 CAUTION: DO NOT ENERGIZE UNIT UNTIL CHECK OUT AND START-UP PROCEDURES HAVE BEEN COMPLETED.
- 3 COMPRESSOR MOTOR IS PROTECTED FROM PRIMARY SINGLE PHASE FAILURE.
- 4 ALL UNIT POWER WIRING MUST BE COPPER CONDUCTORS ONLY AND HAVE A MINIMUM TEMPERATURE INSULATION RATING OF 75 DEGREES C. USE UNIT NAMEPLATE FOR MINIMUM CIRCUIT BREAKER AND MAXIMUM PLEW SIZE REQUIREMENTS. USE 80% OF CIRCUIT BREAKER RATING TO DETERMINE MINIMUM WIRE SIZE TO RUN TO UNIT. CIRCUIT PROVIDER EQUIPMENT PROVIDED IN ACCORDANCE WITH APPLICABLE ELECTRIC CODE.
- 5 THESE FEATURES ARE OPTIONAL AND MAY OR MAY NOT BE PROVIDED. CUSTOMER PROVIDED WIRING FOR ALL STANDARD FEATURES.
- 6 OPENING THE EXTERNAL AUTO-STOP CONTACT WILL INSTITUTE A SHUT DOWN SEQUENCE OF THE CHILLER. CLOSURE OF THE CONTACT WILL ALLOW THE CHILLER TO RETURN TO NORMAL A/C OPERATION.
- 7 AN OPENING OF THE EMERGENCY STOP CONTACT WILL SHUT THE CHILLER DOWN IMMEDIATELY AND TRIGGER AN EMERGENCY STOP. CLOSURE OF THE EMERGENCY STOP CONTACT WILL RESTART THE CHILLER AND A MANUAL RESET OF THE UNIT CONTROLS, DIAGNOSTIC WILL ALLOW THE CHILLER TO RETURN TO NORMAL OPERATION.

WAFV REQUIREMENTS

- | | |
|----|---|
| | RECOMMENDED FIELD WIRING CONNECTIONS ARE SHOWN BY DASHED LINES. |
| 8 | ALL FIELD WIRINGS MUST BE IN ACCORDANCE WITH THE NATIONAL ELECTRICAL CODE AND STATE AND LOCAL REQUIREMENTS. EXISTING FIELD WIRING MUST COMPLY WITH ALL LOCAL APPLICABLE CODES. |
| 9 | VOLUME EXPLODE OFFSETS:
EQUATED TERMINAL BLOCK DISCONNECT ON MAIN CIRCUIT BREAKER; THE POWER WIRING LOG SIZE PROVIDED ON THE VARIOUS UNITS IS SHOWN IN TABLE 1. |
| 11 | CLASS I WIRING, 14 AWG, 600 VOLT CONDUCTORS, 1.5 VOLT CIRCUIT |
| 12 | ALL CUSTOMER CONTROL CIRCUIT WIRING MUST BE COPPER CONDUCTORS ONLY AND HAVE A MINIMUM INSULATION RATING OF 350 VOLTS OR HIGHER. AS NOTED, ALL CUSTOMER WIRING CONNECTIONS ARE MADE TO CIRCUIT BOARD MOUNTED BUS BARS WITH A WIRE BARENESS OF 1/4 TO 3/8 INCH. |
| 13 | DON'T RUN LOW VOLTAGE CORREL WIRING (60 VOLTS OR LESS) IN CONJUNCTION WITH 110 VOLT OR HIGHER WIRING. DON'T EXCEED THE FOLLOWING MAXIMUM RUN LENGTHS FOR A GIVEN SIZE: 14 AWG, 3000 FT.; 16 AWG, 2000 FT.; 18 AWG, 1500 FT. |
| 14 | TRAILER TRACHEE BLUNT RECOMMENDED WIRE:
THE TRACHEE SHEATHED TWISTED PAIR COMMUNICATION CABLE 14-18 AWG, 50V CABLE; THE TOTAL RUN LENGTH OF ALL INTERCONNECTED CABLE BEWOMES IT TO EXCEEDED 500 FEET. GROUND THE SHIELD AT THE TRACHEE END AND AT THE END FOR COMPLETE INSTALLATION AND PROTECTION REQUIRED.
UNITARY COMMUNICATION INTERFACE (LCI) RECOMMENDED WIRE:
22 AWG WIRE, 4 UNSHIELDED COMMUNICATION WIRE RECOMMENDED. THE RUN LENGTH OF ALL INTERCONNECTED CABLE BEWOMES IT TO EXCEED 500 FEET. CONNECTION CALLED OUT BY UNITARY CHART, REFER TO FOLLOWING AUTOMATION SYSTEMS (BAS), COMBINATION OF INITIAL AND FINAL WIRE END OF THE WIRING REQUIREMENTS. |

- | | |
|----|---|
| 15 | THE CONTACTS FOR THESE THERMS ARE JUMPERED AT THE FACTORY BY JUMPER W1 & W2 TO ENABLE UNIT OPERATION IF REMOTE CONTROL IS DESIRED REMOVE THE JUMBERS AND CONNECT TO THE DESIRED CONTROL CIRCUIT |
| 16 | FIELD PROVIDED 115 VOLT 60 HZ OR 220 VOLT 60 HZ CONTROL POWER SUPPLIES ARE REQUIRED. THE MAX FUSE SIZE FOR ALL FIELD PROVIDED WIRING IS 15 AMP. REGARDLESS OF ALL CUSTOMER PROVIDED POWER SUPPLIES AS REQUIRED BY CODE. GREEN GROUND SCREWS ARE PROVIDED IN UNIT FOR GROUNDING. SHAVE |
| 17 | CHILLED/CONDENSED WATER PUMP STARTER AUXILIARY CONTACTS TO BE WIRED IN SERIES WITH FLOW SWITCHES |
- CONTACT RATINGS AND REQUIREMENTS**
- | | |
|----|--|
| 19 | UNIT PROVIDED DRY CONTACTS FOR THE CONDENSER/CHILLED WATER PUMP CONTROL. THE UNIT OPERATING STATUS RELAYS AND ICE MAKING STATUS RELAY ARE RATED FOR 7 AMP RESISTIVE, 2.5 AMP PILOT DUTY, OR 10 HP 12 FLA AT 120 VOLTS 60 HZ. CONTACTS ARE RATED FOR 2 AMPS GENERAL PURPOSE CIRCUIT DUTY AT 240 VOLTS |
| 20 | CUSTOMER SUPPLIED CONTACTS FOR ALL LOW VOLTAGE CONNECTIONS MUST BE COMPATIBLE WITH DRY CIRCUIT 24 VOLTS DC FOR A 12 MA RESISTIVE LOAD. SILVER OR GOLD PLATED CONTACTS ARE RECOMMENDED |
| 21 | FLOW SWITCH AND INTERLOCK CONTACTS MUST BE ACCEPTABLE FOR USE IN A 120 VOLT 15A CIRCUIT OR A 220 VOLT 25A CIRCUIT |

CONTACT RATINGS AND REQUIREMENTS

- 26 UNIT PROVIDES DRY CONTACTS FOR THE CONDENSER/CHILLED WATER PUMP CONTROL. THE UNIT OPERATING STATUS RELAYS AND ICE MAKING STATUS RELAY ARE RATED FOR 7.2 AMPS RESISTIVE, 2.88 AMP/PILOT DUTY, OR 1/3 HP 7.2 FLA AT 120 VOLTS 60 HZ. CONTACTS ARE RATED FOR 5 AMPS GENERAL PURPOSE DUTY AT 240 VOLTS.
- 26 CUSTOMER SUPPLIED CONTACTS FOR ALL LOW VOLTAGE CONNECTIONS MUST BE COMPATIBLE WITH DRY CIRCUIT 24 VOLTS DC FOR A 12 MA RESISTIVE LOAD. SILVER OR GOLD PLATED CONTACTS ARE RECOMMENDED.
- 27 FLOW SWITCH AND WATERLOCK CONTACTS MUST BE ACCEPTABLE FOR USE IN A 120 VOLT 15A CIRCUIT OR A 220 VOLT 25A CIRCUIT
- 28 THE FIELD WIRING FOR THE 115V HOT/LEGS IS TERMINATED TO THE TERMINAL BLOCK SEE INSTRUCTION LABEL IN CONTROL PANEL FOR WIRE ADDITION INSTRUCTIONS. SPLICE FIELD WIRES TOGETHER AND WIRE TO DB.

**CITY OF SOUTH PADRE ISLAND
CITY COUNCIL MEETING
AGENDA REQUEST FORM**

MEETING DATE: August 4, 2010

NAME/DEPT.: Reuben Trevino, Coastal Resources Manager

ITEM

Discussion and Action on the beachfront construction certificate and dune protection permit for Mejia & Rose inc. The Construction of a five story condominium with amenities (2400 Gulf Blvd.)

ITEM BACKGROUND

On July 26, 2010 the BDTF met and reviewed this application. The BDTF unanimously voted to approve the application as submitted.

RECOMMENDATIONS/COMMENTS

Staff recommends approval of this application. All construction is landward of the HBL. The applicant has also submitted a mitigation plan which will reinforce the healthy dune system already established seaward of the HBL.

BUDGET/FINANCIAL SUMMARY

COMPREHENSIVE PLAN GOAL

COUNCIL ACTION

Motion: _____

Second: _____

Vote: Ayes: _____ **Nays:** _____

Abstentions: _____



July 12, 2010

Via Electronic Mail

Mr. Reuben Trevino
City of South Padre Island
P.O. Box 3410
South Padre Island, Texas 78597-3410

Beach and Dune Construction/Protection Permit in the Town of South Padre Island

Site Address: 2400 Gulf Blvd, City of South Padre Island
Legal Description: Lot 4, Block 34, Padre Beach Section IV
Lot Applicant: Pablo Paez/Mejia & Rose, Inc.
GLO ID No.: BDSPI-10-0271

Dear Mr. Trevino:

The General Land Office has reviewed the application for a dune protection permit and beachfront construction certificate for the above-referenced location. The applicant proposes to construct an eight-story condominium complex including the construction of a pool, cabana, restroom facilities and landscaping. Additionally, the applicant proposes a dune restoration project seaward of the Historic Building Line (HBL) to mitigate for all impacts to dunes and dune vegetation within the construction area. The proposed construction is located greater than 200 feet from the line of vegetation and landward of the HBL in an area that, according to the Bureau of Economic Geology, is eroding at the rate of 3 feet per year.

Based on the materials forwarded to our office for review, we have the following comment:

- The City of South Padre Island shall require the permittee to use the mitigation sequence as a condition of the permit and must require the permittee to follow the order of the mitigation sequence by demonstrating avoidance, minimization, mitigation and compensation.¹

¹ 31 TAC §15.4(f).

Page 2 of 2

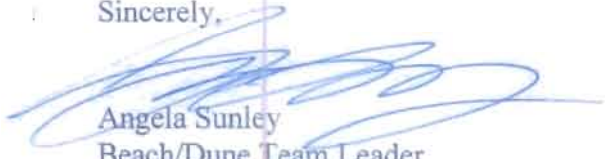
July 12, 2010

Mr. Trevino

BDSPI-10-0002

If you have any questions, please contact me by phone at (512) 463-9309 or by email at angela.sunley@glo.state.tx.us.

Sincerely,



Angela Sunley
Beach/Dune Team Leader
Coastal Assistance Division
Texas General Land Office

Cover page

*Town of South Padre Island
Beach & Dune Application
for*

"Las Estrellas"

Condominiums

at

2400 Gulf Boulevard
South Padre Island, Texas

Prepared for:

SPI ARCHITECTS

P.O. Box 2220

South Padre Island, Texas, 78597

Phone (956)345-9960

Phone (956) 223-9120

Fax: (956) 761-2352

By:

Mejia & Rose, Incorporated

Engineering

Surveying

T.B.P.E. Reg. No. F-2670

1643 West Price Road, P.O. Box 3761

Brownsville, Texas 78523

Phone: (956) 544-3022

Fax (956) 544-3068

Email: mandrinc@cngmail.com

M&R Job No. 18032



Town of South Padre Island
Beach & Dune Application

Site for Proposed Work

Legal Description: Lot 4, Block 34, Padre Beach Section IV

Physical Address: 2400 Gulf Boulevard

Property Owner Information:

Applicant/Agent for Owner:

Name: Mr. Pablo Paez

Name: Mejia & Rose, Incorporated

Mailing Address: 4212 Padre Blvd.

Mailing Address: P.O. Box 3761

City, State, Zip: South Padre Island, Texas 78597

City, State, Zip: Brownsville, Texas 78523

Phone Number: (956) 346-7679

Phone Number: (956) 544-3022

Fax Number: (956) 761-2732

Fax Number: (956) 544-3068

E:mail Address: ppaez@pagadesarrollos.com

E:mail Address: mandrnc@cngmail.com

Applicant Signature: _____

[Handwritten Signature]

Date of Signature: _____

June 8, 2010

I/We, owners of the above-mentioned property, authorize the applicant stated above, to act in my behalf in order to acquire a Beach and Dune permit for the construction proposed below. (owner initials here → *[Handwritten Initials]*)

Owner(s) Signature(s): _____

Date of Signature: _____

[Handwritten Signature]
6/8/2010

Project Description:

Describe with as much detail as possible, the construction proposed. If more room is needed, please include an additional page. Include the number of habitable units, amenities, swimming pools, fences, kinds of fences, whether footings and/or retaining walls will be installed, and locations of proposed landscaping and parking.

The proposed Las Estrellas condominiums will consist of 5 dwelling units in a 5-story with roof deck masonry structure. The development area will be contained to the area west of the existing bulkhead on the permitted bulkhead line.

This development will offer 5 living quarters above the Carport area. All parking areas are located on the western portion of the site on the east side of Gulf Boulevard and will be constructed of brick pavers. There is an amenity area proposed that includes a swimming pool, spa, and Cabañas with enclosed restroom facilities.

Total Square footage of footprint of habitable structure

Percentage of impervious surface [(impervious surface / habitable footprint)* 100]: **64 percent**

Please Note: the percentage of impervious surface cannot exceed 5% in an eroding area.

Approximate Duration of Construction:

Financial Plan for the removal of all hard structures.

All Properties which are allowed to build retaining walls on their property are allowed to do so with the condition that a financial plan for the removal of the retaining wall is submitted to the Public Works Department of the Town of South Padre Island. Removal of the retaining wall at the owner's expense may be required if/once the retaining wall comes into regular contact with wave action for twenty (20) out of thirty (30) consecutive days. The Town accepts the submission of a Retaining Wall Covenant, or other financial guarantee, insuring the removal of the retaining wall if the required conditions are met.

Type of Plan **N/A**

submitted:

Date of submission:

Drainage:

Describe the impact that the proposed construction will have on the natural drainage pattern on the site and adjacent lots.

a) no change in the drainage on site.

b) the proposed construction will change the grading and the drainage on the subject property. (An explanation will be required detailing where the water will drain.)

Explanation/other info:

Impacts to Beach/Dune System:

Answer each question as completely as possible in narrative form:

1) What damage will this proposed construction have on the dune vegetation located at the project site?

a) no damage to dune vegetation whatsoever.

b) the proposed construction will impact _____ % of the dune vegetation on site. (explanation of the "impact" will be required)

c) the proposed construction will require the removal and relocation of _____ % of the dune vegetation on site. (the submission of a mitigation plan will be required)

Explanation/other info:

2) How will the proposed construction alter the dune size/shape at the project site?

a) no change to dune size/shape whatsoever.

b) the proposed construction will change _____ % of the size/shape of dunes on site. (details will be required)

c) the proposed construction will require the removal and relocation of _____ % of the dunes on site. (the submission of a mitigation plan will be required)

Explanation/other info:

3) How will the proposed construction change the hydrology of the dunes at the project site?

a) no change to dune hydrology whatsoever.

b) the proposed construction will impact dune hydrology on site. (details will be required)

Explanation/details:

4) Describe alternatives to the proposed construction or method of construction which will cause fewer or no adverse effects on dunes and dune vegetation. No part of the project will affect the dunes and dune vegetation.

5) Describe alternatives to the proposed construction or method of construction which will cause fewer or no adverse impairment to beach access. ***No part of the project will affect the beach access***

Mitigation Plan: Describe the methods which you will use to avoid, minimize, mitigate and/or compensate for any adverse effects on dunes or dune vegetation. ***No part of the project will effect the dunes and dune vegetation***

Financial Plan for Dune Mitigation: N/A

If required by the Board of Aldermen, a financial guarantee (irrevocable letter of credit or a performance bond, etc.) may be necessary to insure the mitigation of dunes/dune vegetation takes place as proposed and required of the applicant. Type of Plan submitted: - Date of submission:

Checklist of Additional Required Application Information:

An accurate map, plat or site plan showing: (see topographical survey map)

- 1) Legal description of the property (lot, block, subdivision) and the immediately adjoining property.
- 2) Location of all existing structures - including the habitable and inhabitable structures, swimming pools, decks, fences, parking areas, landscape areas, etc.
- 3) Location of the Historical Building Line on the subject property and the extension of the line on the properties immediately adjoining the subject property to the north and to the south.
- 4) Location and elevation of existing retaining walls -both on the subject property and those properties immediately adjoining the subject property to the north and to the south.
- 5) Location of proposed structure(s) - if proposing the construction of a retaining wall, please also include the proposed elevation of the retaining wall.
- 6) Location of proposed driveways, parking areas (showing the # of proposed parking spaces), and landscape areas.
- 7) Location of all existing and proposed beach access paths and/or dune walkovers.
- 8) Location and extent of any man-made vegetated mounds, restored dunes, fill activities, or any other pre-existing human modifications on the tract.
- 9) Topographical survey of the site identifying all elevations, existing contours of the project area (including dunes and sqales), and the proposed contours of the final grade.

Other required application information:

- 1) A grading and layout plan showing proposed contours for the final grade
- 2) The floor plan(s) and elevation(s) of the structure proposed to be constructed or expanded.
- 3) Photographs of the site which clearly show the current location of the vegetation line & existing dunes on the tract.
- 4) Copy of the Flood Rate Map showing the location of the subject property.
- 5) Copy of the Historical Erosion Rate Map as determined by the Univ. of Texas @ Austin, Bureau of Economic Geology.
- 6) \$180 application fee.

YOUR APPLICATION IS NOT COMPLETE UNLESS ALL INFORMATION REQUESTED ABOVE IS SUBMITTED.
FOR APPLICATIONS WHICH REQUIRE BEACH AND DUNE TASK FORCE REVIEW, 21 COPIES WILL BE REQUIRED

All other application submissions require only three (3) copies of the complete information.

Site Photographs of existing conditions



View from Gulf Boulevard



View from the Beach (Gulf of Mexico)



View along permitted bulkhead line
South facing north

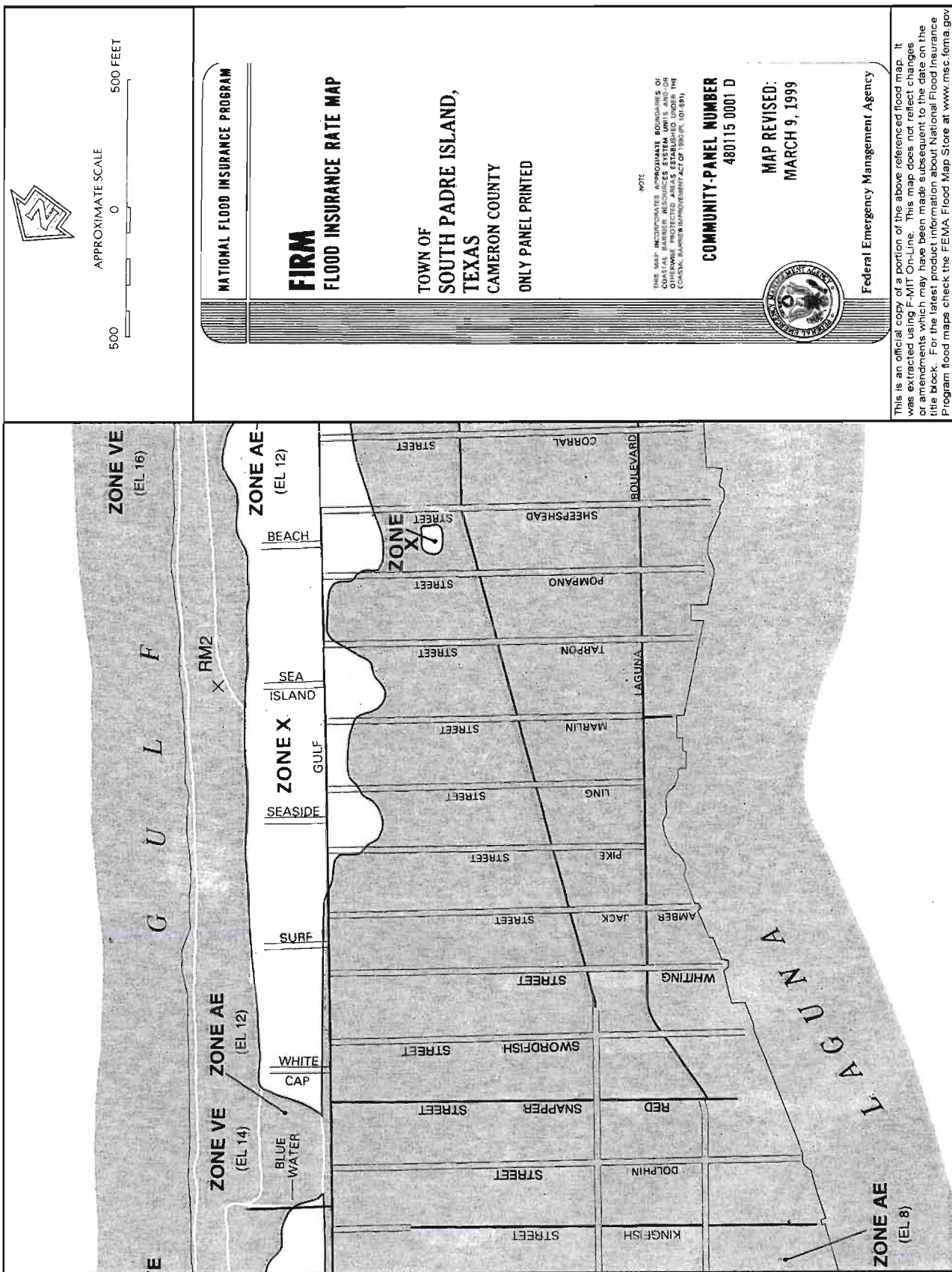


View along permitted bulkhead line
North facing south



View along permitted bulkhead line
facing the Gulf of Mexico

F.E.M.A Flood Map



**CITY OF SOUTH PADRE ISLAND
CITY COUNCIL MEETING
AGENDA REQUEST FORM**

MEETING DATE: August 4, 2010

NAME/DEPT.: Rick Vasquez, Transit & Development Director
Jessie Arriaga, Transit General Manager

ITEM

Discussion and action to accept award of Transportation State Contract RPT1103

ITEM BACKGROUND

Accept State contract RPT 1103(21) 51121F7032 for the amount of \$425.483.

RECOMMENDATIONS/COMMENTS

State funds will be utilized for Administration, Operating, Preventative Maintenance, and Capital cost.

The Wave will be replacing Ford E 350 1997 fifteen passenger van for a 2011 Ford F-250. There is no local match required.

BUDGET/FINANCIAL SUMMARY

The Wave received an increase of \$57,204.00 for State contract FY 2010-2011

COMPREHENSIVE PLAN GOAL

Chapter 4. Mobility Plan

Goal 4.I Increase ridership on the WAVE both residents & visitors.

Goal 4.K Improve Transit Facilities

COUNCIL ACTION

Motion: _____

Second: _____

Vote: Ayes: _____ **Nays:** _____

Abstentions: _____

**CITY OF SOUTH PADRE ISLAND
CITY COUNCIL MEETING
AGENDA REQUEST FORM**

MEETING DATE: August 4, 2010

NAME/DEPT.: Joni Clarke, City Manager

ITEM

Discussion, comments and guidance from the City Council regarding the proposed 2010-11 Fiscal Year Budget.

ITEM BACKGROUND

RECOMMENDATIONS/COMMENTS

BUDGET/FINANCIAL SUMMARY

COMPREHENSIVE PLAN GOAL

COUNCIL ACTION

Motion: _____

Second: _____

Vote: Ayes: _____ **Nays:** _____

Abstentions: _____

**CITY OF SOUTH PADRE ISLAND
CITY COUNCIL MEETING
AGENDA REQUEST FORM**

MEETING DATE: August 4, 2010

NAME/DEPT.: Joni Clarke, City Manager

ITEM

Discussion, comments and guidance from the City Council regarding calling a Special Election to be held on November 2, 2010 for the purpose of issuing bonds for constructing and equipping a new Fire Station.

ITEM BACKGROUND

RECOMMENDATIONS/COMMENTS

The deadline to call a Special Election is August 24, 2010, so if you wish to proceed, we will place on the August 18, 2010 Council meeting a resolution calling for a Special Bond Election.

BUDGET/FINANCIAL SUMMARY

COMPREHENSIVE PLAN GOAL

COUNCIL ACTION

Motion: _____

Second: _____

Vote: Ayes: _____ **Nays:** _____

Abstentions: _____

**CITY COUNCIL MEETING
CITY OF SOUTH PADRE ISLAND
EXECUTIVE SESSION
AGENDA REQUEST FORM**

MEETING DATE: August 4, 2010

EXECUTIVE SESSION

ITEM DESCRIPTION

Pursuant to TEXAS GOVERNMENT CODE, Section 551.071, Consultation with Attorney; Section 551.072, Deliberations about Real Property; an Executive Session will be held to discuss:

- a. Consultation with Attorney, deliberation regarding the value and possible acquisition and/or sale of real property

COUNCIL ACTION

Motion: _____

Second: _____

Vote: Ayes: _____ **Nays:** _____

Abstentions: _____

**CITY COUNCIL MEETING
CITY OF SOUTH PADRE ISLAND
AGENDA REQUEST FORM**

MEETING DATE: August 4, 2010

NAME/DEPT.: City Council

ITEM DESCRIPTION

Discussion and action regarding the value and possible acquisition and/or sale of real property.

RECOMMENDATIONS/COMMENTS

COMPREHENSIVE PLAN GOAL

COUNCIL ACTION

Motion: _____

Second: _____

Vote: Ayes: _____ **Nays:** _____

Abstentions: _____