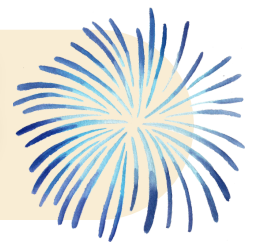


# ISLAND VIBES

the Official Newsletter for the City of South Padre Island



## UPCOMING MEETINGS

**Wednesday • January 7<sup>th</sup>**  
5:30 PM • Regular City Council

View upcoming meetings, live stream in session, & watch archived meetings [here](#).

## UPCOMING EVENTS

### Saturday Recycling

Date: Every Saturday  
Time: 8:00 a.m. to 11:00 a.m.  
Where: 4501 Padre Blvd  
[Click here](#) for event details.

### SPI Market Days

Date: January 23<sup>rd</sup> - 25<sup>th</sup> & February 20<sup>th</sup> - 22<sup>nd</sup>  
Time: 9:00 a.m. - 5:00 p.m.  
Where: SPI Convention Center  
[Click here](#) for event details.

### SPI Chamber of Commerce hosts the Island Showcase

Date: February 3<sup>rd</sup>  
Time: 5:30 p.m. - 7:30 p.m.  
Where: SPI Convention Center  
[Click here](#) for event details.

### 30th Annual Winter Outdoor Wildlife Expo

Date: February 5<sup>th</sup> - 7<sup>th</sup>  
Time: 10:00 a.m. - 5:00 p.m.  
Where: 6801 Padre Boulevard  
[Click here](#) for event details.

### Indoor Kite Fest

Date: February 6<sup>th</sup> - 7<sup>th</sup>  
Time: 6:30 p.m.  
Where: SPI Convention Center  
[Click here](#) for event details.

There's no shortage of events happening on South Padre Island! [Click here](#) to join the fun and see what's happening.



## Adopt-A-Beach

Ready to volunteer to beautify the beach with the help of Adopt-a-Beach? Use this [link](#) to learn more and how to volunteer!



Friday, February 6<sup>th</sup> from 8:30 a.m. to 12:00 p.m.



Beach Access #8 Whitecap Circle between E. Red Snapper St. and E. Swordfish St.

## Pet of the Week

Alone this New Years? You don't have to be! Arlo would love to join you. Arlo is a playful, energetic, young Pitt mix. He loves everyone, does great on walks, and cuddle time is his favorite time of the day.

Meet your future fur friend at Friends of Animal Rescue at 4908 Padre Blvd. Complete the adoption application [here](#).

## Short Term Rentals

[Click here](#) to register your Short Term Rental today. Questions regarding the Short Term Rental Licenses? Contact us at (956) 761-8382 or by emailing hottax@myspi.org.

Browse all the Short Term Rentals that are registered with the City [here](#). [Click here](#) to view the Short Term Rental Information flyer!

## #Join TeamSPI

The City of South Padre Island is hiring! [Apply here](#) to become a part of our sandtastic team today!

The City offers great benefits like vision, medical, and dental coverage, vacation leave, and more!

## Important Safety Links

The City is encouraging individuals who require special assistance during emergencies to enroll in its Special Needs Registry.



Scan or click here to view more.

Sign up for "RAVE" the City's Emergency Notification System to stay up to date during emergencies.



Scan or click here to view more.

As a resident, you can provide details on your properties and more that will be directed to your local law enforcement!



Scan or click here to view more.

If you live and/or own property on South Padre Island register your vehicle for a re-entry sticker.



Scan or click here to view more.



Follow us! @CityofSPI

