



**NOTICE OF MEETING
CITY OF SOUTH PADRE ISLAND
SHORELINE TASK FORCE**

NOTE: One or more members of the City of South Padre Island City Council may attend this meeting; if so, this statement satisfies the requirements of the OPEN MEETINGS ACT.

NOTICE IS HEREBY GIVEN THAT THE SHORELINE TASK FORCE OF THE CITY OF SOUTH PADRE ISLAND, TEXAS, WILL HOLD A MEETING ON:

MONDAY, AUGUST 13, 2018
3:00 P.M. AT THE MUNICIPAL BUILDING,
CITY COUNCIL CHAMBERS, 2ND FLOOR
4601 PADRE BOULEVARD, SOUTH PADRE ISLAND, TEXAS

1. Call to Order.
2. Pledge of Allegiance.
3. Public Comments and Announcements: *This is an opportunity for citizens to speak to Task Force relating to agenda or non-agenda items. Speakers are required to address the Shoreline Task Force at the podium and give their name before addressing their concerns. [Note: State law will not permit the Shoreline Task Force to discuss debate or consider items that are not on the agenda. Citizen Comments may be referred to City Staff or may be placed on the agenda of a future Shoreline Task Force meeting]*
4. Approval of the July 23, 2018 meeting minutes.
5. Discussion on PowerPoint Presentation on the Shoreline Department Projects. (B Hill)
 - Nearshore Berm Nourishment
 - Overview of Particle Tracing Study
 - Beach Access Mat Maintenance Protocol Mapping Results
6. Adjournment.


DATED THIS THE 8TH DAY OF AUGUST 2018.





Susan Hill, City Secretary

THE UNDERSIGNED AUTHORITY, DO HEREBY CERTIFY THAT THE ABOVE NOTICE OF MEETING OF THE SHORELINE TASK FORCE OF THE CITY OF SOUTH PADRE ISLAND, TEXAS IS A TRUE AND CORRECT COPY OF SAID NOTICE AND THAT I POSTED A TRUE AND CORRECT COPY OF SAID NOTICE ON THE BULLETIN BOARD AT CITY HALL/MUNICIPAL BUILDING ON **AUGUST 8, 2018** AT/OR BEFORE **3:00 P.M.** AND REMAINED SO POSTED CONTINUOUSLY FOR AT LEAST 72 HOURS PRECEDING THE SCHEDULED TIME OF SAID MEETING.



Susan Hill, City Secretary

THIS FACILITY IS WHEELCHAIR ACCESSIBLE, AND ACCESSIBLE PARKING SPACES ARE AVAILABLE. REQUESTS FOR ACCOMMODATIONS OR INTERPRETIVE SERVICES MUST BE MADE 48 HOURS PRIOR TO THIS MEETING. PLEASE CONTACT BUILDING OFFICIAL, DAVID TRAVIS; ADA DESIGNATED RESPONSIBLE PARTY AT (956) 761-8103.

**CITY OF SOUTH PADRE ISLAND
SHORELINE TASKFORCE
MEETING
AGENDA REQUEST FORM**

MEETING DATE: August 13, 2018

NAME & TITLE: Brandon Hill, Shoreline Director

DEPARTMENT: Shoreline Department

ITEM

Approval of July 23, 2018 regular meeting minutes.

ITEM BACKGROUND

BUDGET/FINANCIAL SUMMARY

None

COMPREHENSIVE PLAN GOAL

LEGAL REVIEW

Sent to Legal: YES: _____

NO: _____

Approved by Legal: YES: _____

NO: _____

Comments:

RECOMMENDATIONS/COMMENTS

**MINUTES
CITY OF SOUTH PADRE ISLAND
SHORELINE TASK FORCE**

MONDAY, JULY 23, 2018

I. Call To Order.

The Shoreline Task Force of the City of South Padre Island, Texas held a regular meeting on Monday, July 9, 2018, at the Municipal Complex Building, 2nd Floor, 4601 Padre Boulevard, South Padre Island Texas. Chairman Neil Rasmussen called the meeting to order at 3:32 p.m. A quorum was present: Task Force Members Ms. Norma Trevino, Mr. Robert Nixon, Mr. Troy Giles, and Mr. Stormy Wall; Ms. Thoren Thorbjørnsen and Ms. Virginia Guillot were absent.

City staff members present were: City Manager Susan Guthrie, Assistant City Manager Darla Jones, Shoreline Department Director Brandon Hill, and Shoreline Program Coordinator Jose Manuel Aguilar.

II. Pledge of Allegiance.

Chairman Neil Rasmussen led the Pledge of Allegiance.

III. Public Comments And Announcements:

No public comments and announcements were given at this time.

IV. Approval of the July 9, 2018 Meeting Minutes.

Task Force Member Robert Nixon made a motion, seconded by Task Force Member Norma Trevino to approve the meeting minutes as submitted. Motion carried unanimously.

V. Discussion on PowerPoint presentation of the Shoreline Department projects. (B Hill)

- **Nearshore Berm Nourishment**
- **Overview of Particle Tracing Study**

Shoreline Department Director Brandon Hill presented to the Task Force on the topics.

VI. Discussion and action to cancel regular Shoreline Task Force meetings scheduled for August 27, 2018, and December 24, 2018. (B. Hill)

Task Force Member Troy Giles made a motion, seconded by Task Force Member Robert Nixon to approve the cancelation of Shoreline Task Force regular meetings scheduled for August 27, 2018 and December 24, 2018. Motion carried unanimously.

VII. Discussion and action to recommend approval of a resolution supporting the submission of the application for state assistance from the Beach Maintenance Reimbursement fund for the Fiscal Year 2018/19 to City Council. (B. Hill)

Task Force Member Robert Nixon made a motion, seconded by Task Force Member Norma Trevino to recommend approval of a resolution supporting the submission of the application for state assistance from the Beach Maintenance Reimbursement fund for the Fiscal Year 2018/19 to City Council. Motion carried unanimously.

VIII. Discussion and action to recommend approval of a resolution that establishes rental charges for beach cleaning equipment and labor to be used for the City's Beach Maintenance Reimbursement submissions to City Council. (B. Hill)

Task Force Member Robert Nixon made a motion, seconded by Task Force Member Norma Trevino to recommend approval of a resolution that establishes rental charges for beach cleaning equipment and labor to be used for the City's Beach Maintenance Reimbursement submissions to City Council. Motion carried unanimously.

IX. ADJOURNMENT.

There being no further business, Chairman Rasmussen adjourned the meeting at 3:55 p.m.

Jose Aguilar, Program Coordinator

Neil Rasmussen, Chairman

**CITY OF SOUTH PADRE ISLAND
SHORELINE TASKFORCE
MEETING
AGENDA REQUEST FORM**

MEETING DATE: August 13, 2018

NAME & TITLE: Brandon Hill, Shoreline Director

DEPARTMENT: Shoreline Department

ITEM

Discussion on updated PowerPoint presentation of Shoreline Department Projects. (Hill)

- Nearshore Berm Nourishment
- Overview of Particle Tracing Study
- Beach Access Mat Protocol Mapping Results

ITEM BACKGROUND

BUDGET/FINANCIAL SUMMARY

None

COMPREHENSIVE PLAN GOAL

Chapter III. Parks and Resources

GOAL 1: The City shall ensure protection and conservation of natural resources, such as beaches, dunes, wetlands, Laguna Madre waterfront and native flora and fauna, allowing for their sustainable use and enjoyment by future generations.

Objective 1.1 Beach and dunes shall be protected from both natural and artificial erosion.

LEGAL REVIEW

Sent to Legal:	YES: _____	NO: <u> X </u>
Approved by Legal:	YES: _____	NO: <u> X </u>

Comments:
RECOMMENDATIONS/COMMENTS



Shoreline Department

Project Review



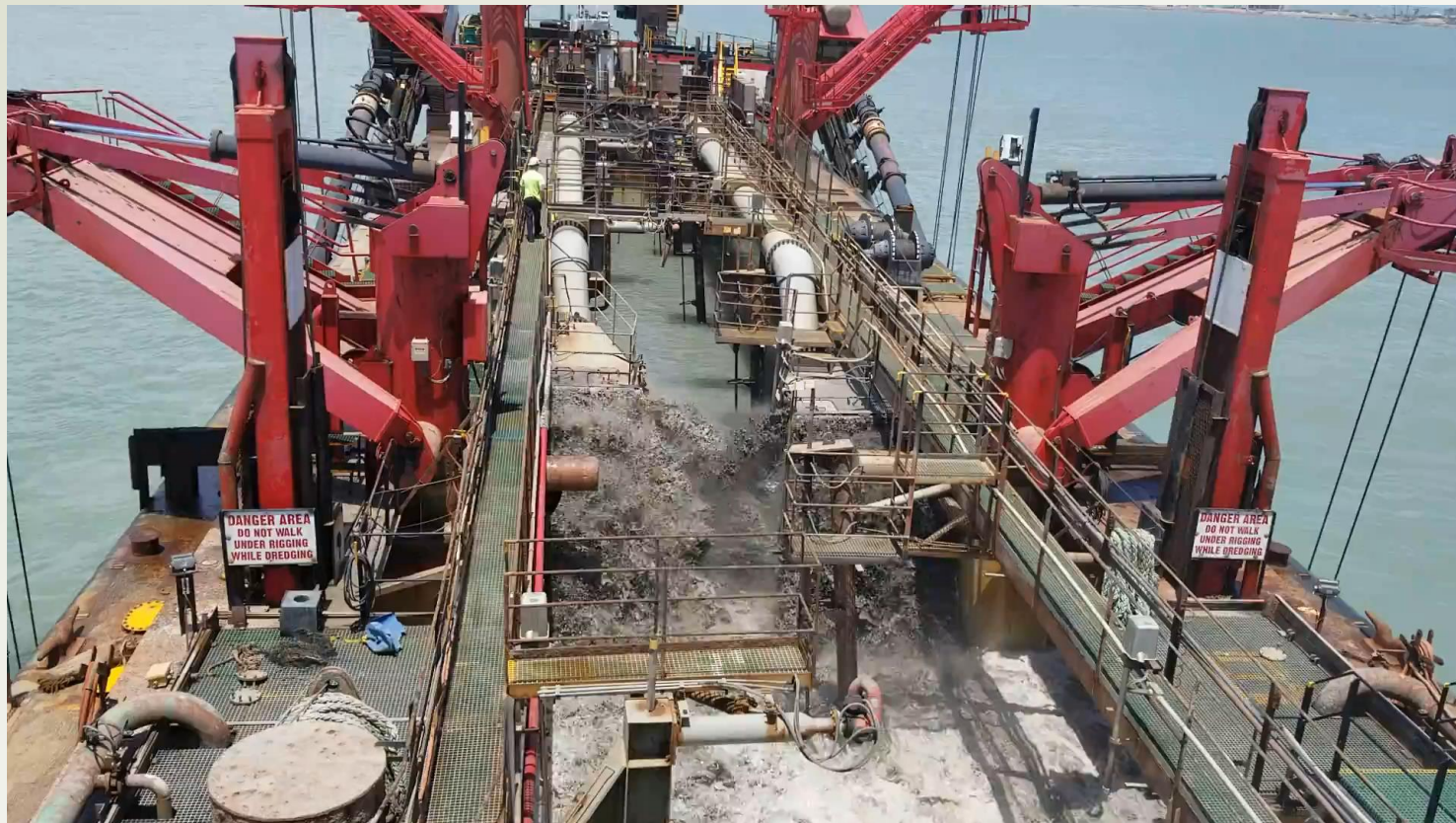
Ongoing Efforts

- Nearshore Berm Nourishment
- Tracer Study
- Access Mat Mapping



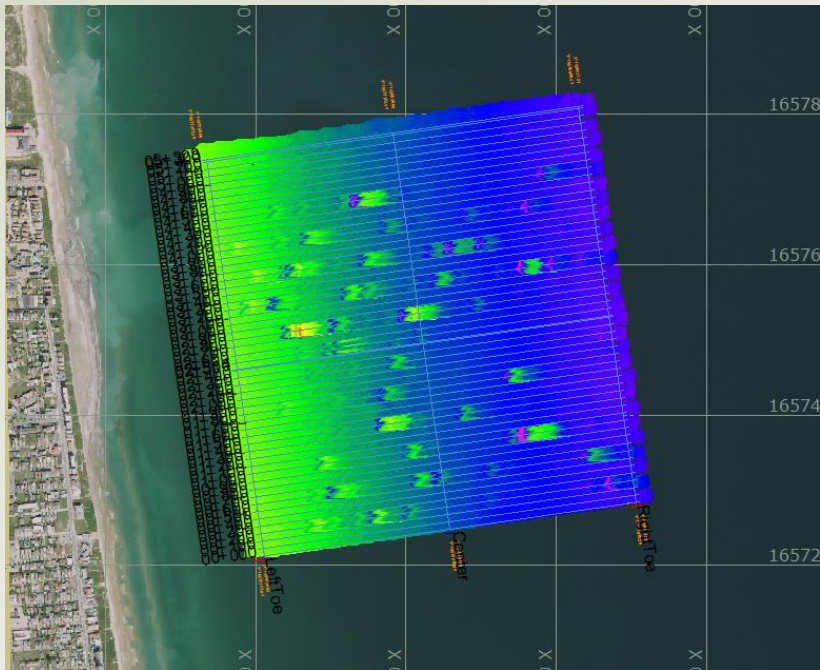
408,000 Cubic Yards

- The Manson Co. hopper dredge Bayport has completed it's mission

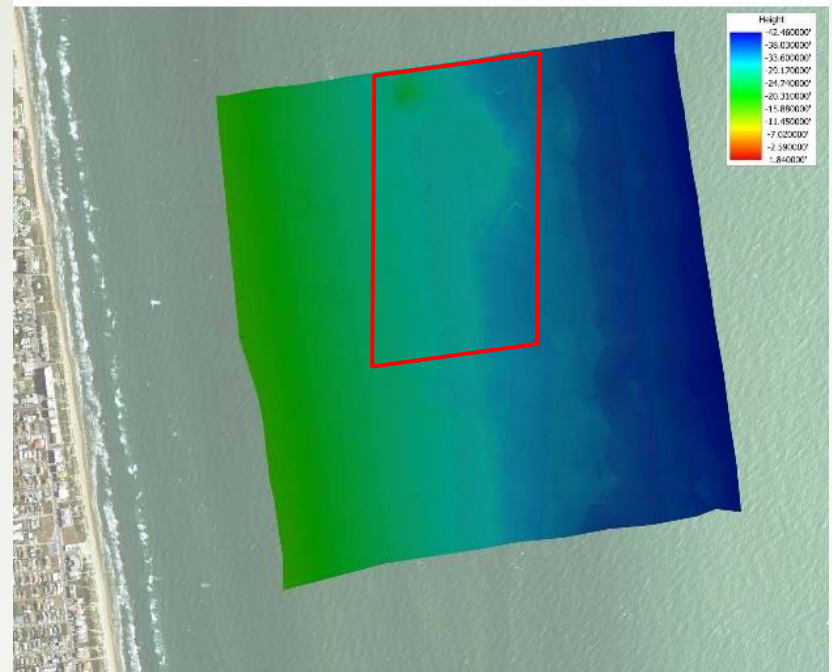


Berm Bathymetry

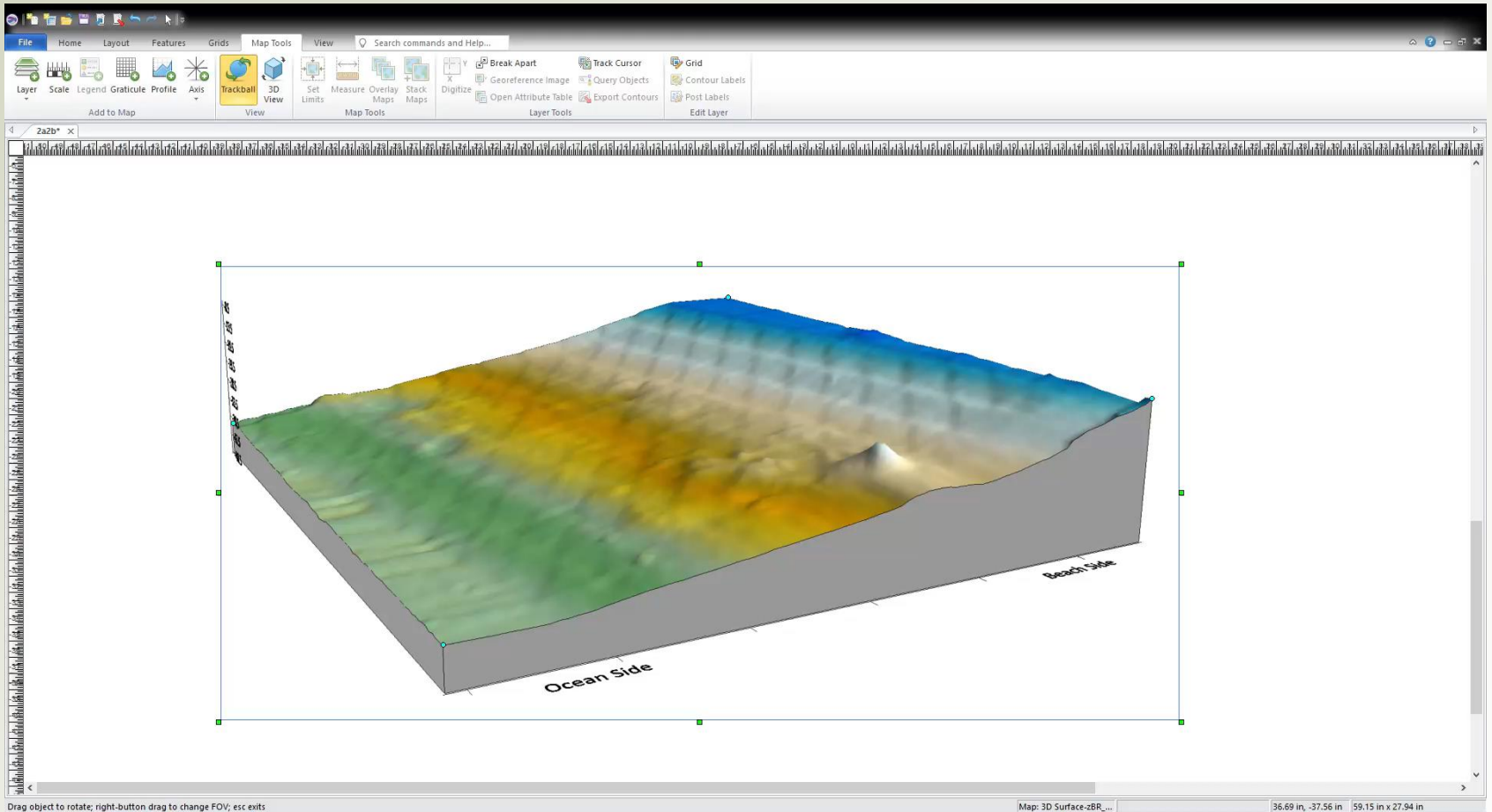
Before



After

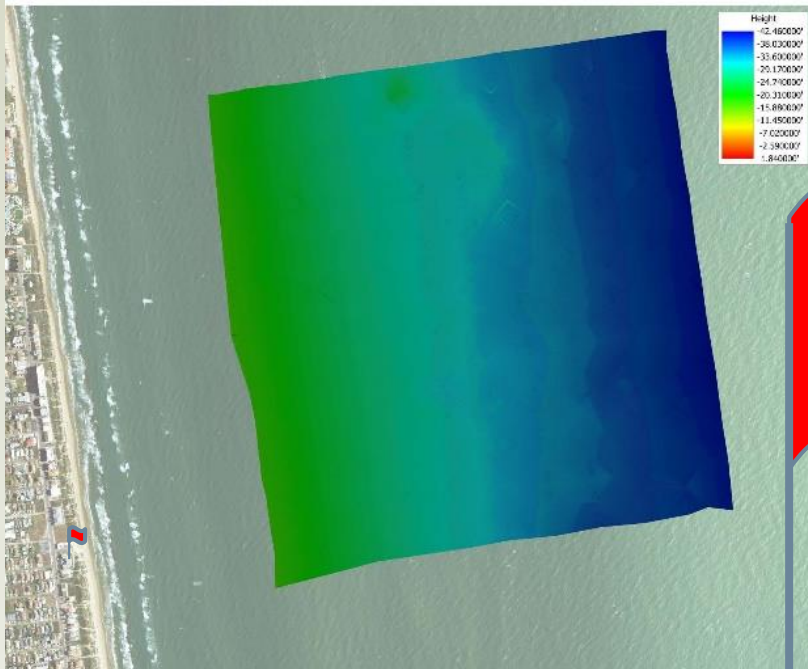


Berm Bathymetry

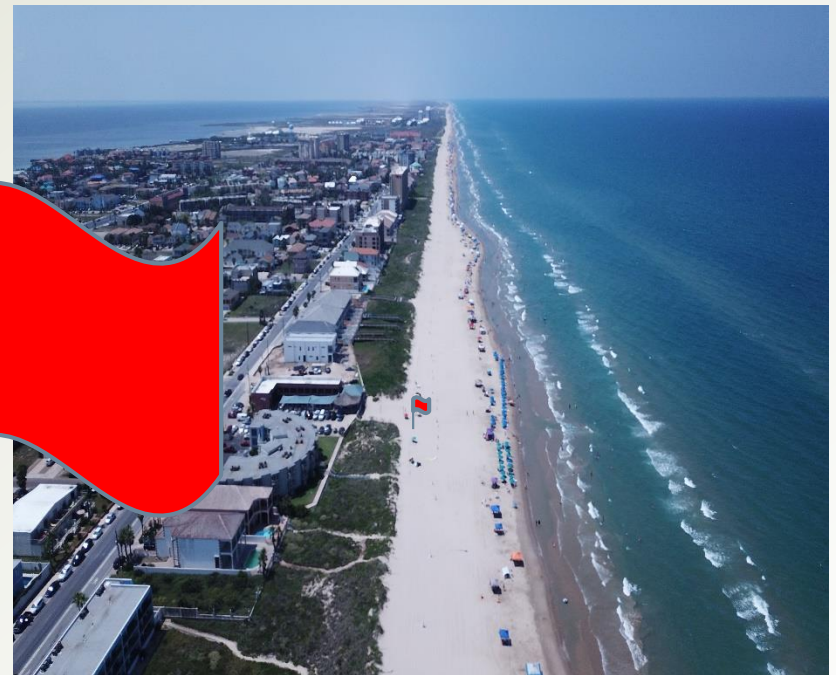


Beach Conditions

Placement Area 2A/2B



Drone Footage Taken 7/25/2018



Particle Tracing Partners



**US Army Corps
of Engineers®**



**TEXAS A&M UNIVERSITY
GALVESTON CAMPUS®**

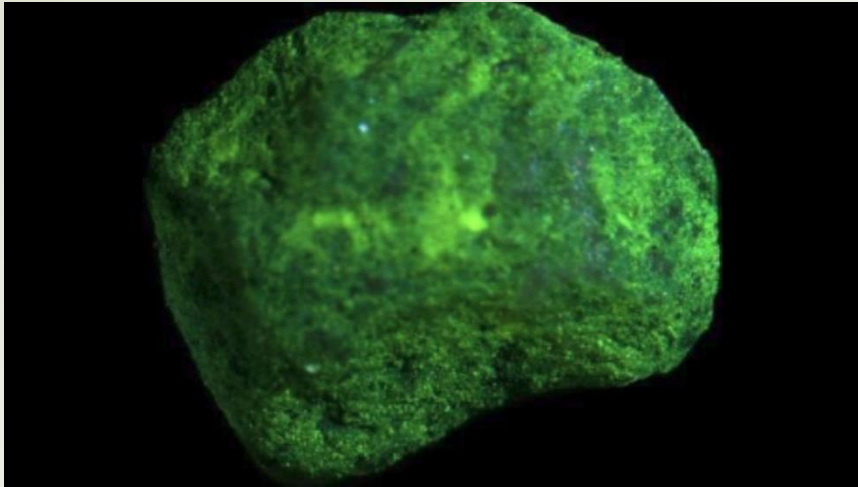


Tracer Sand



Tracer Sand

- Quantity 4,400 lbs.
- Size: 190 microns (matches our sand perfectly)
- Color: chartreuse
- Applied signatures: Fluorescent color and ferrimagnetism.

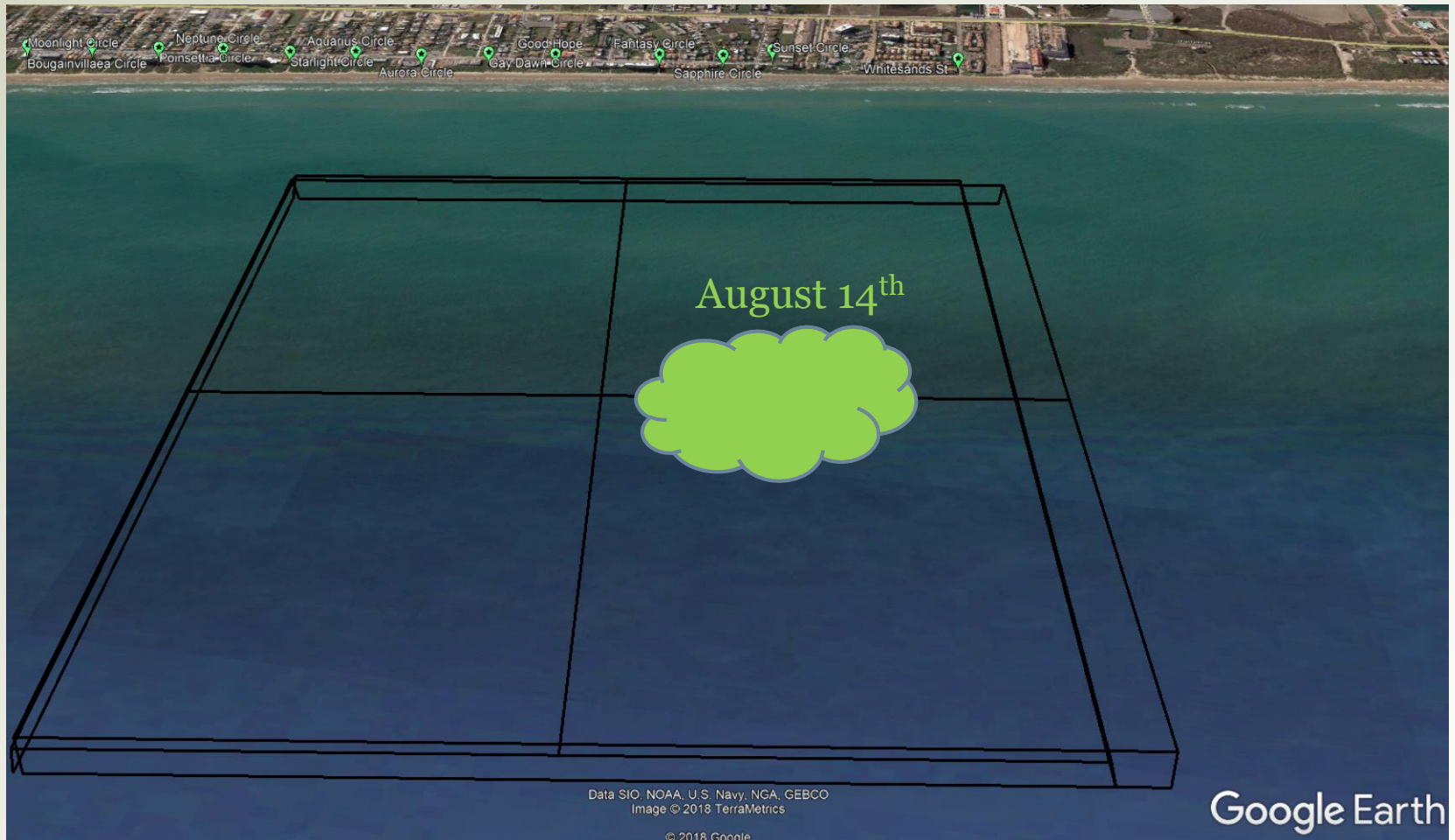


MV. Isabella operated by Breakaway Cruises



Figure 4. The vessel (the MV. Isabella) to be used for tracer deployment.

Study Area



Study Area

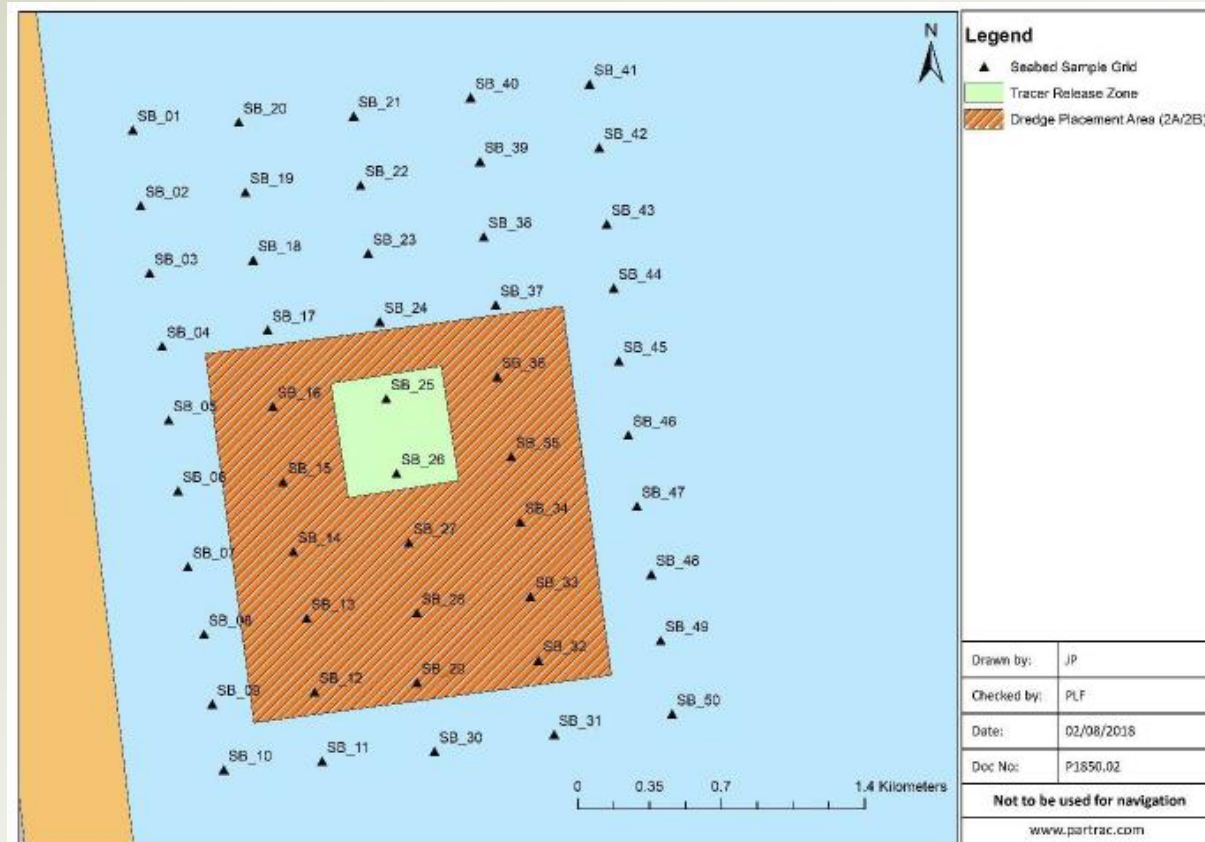


Figure 7. The proposed seabed (offshore) sample locations. The sample numbers correspond to the numbers detailed in Table 5.

Study Area

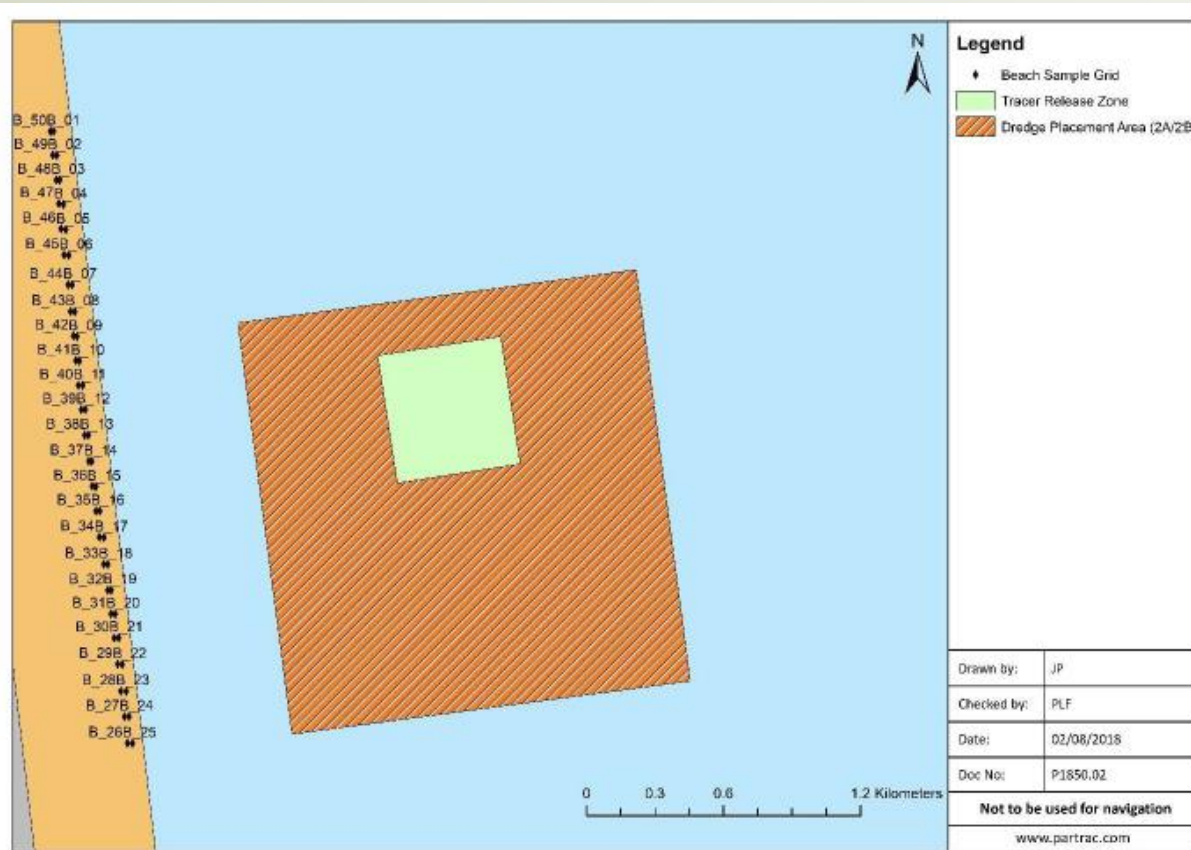
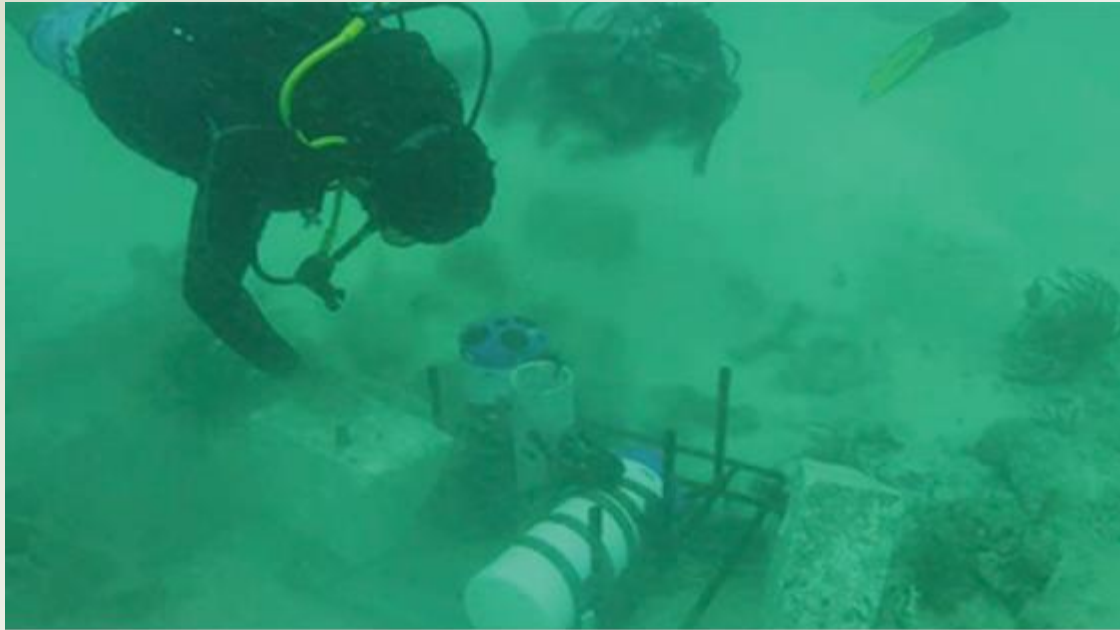
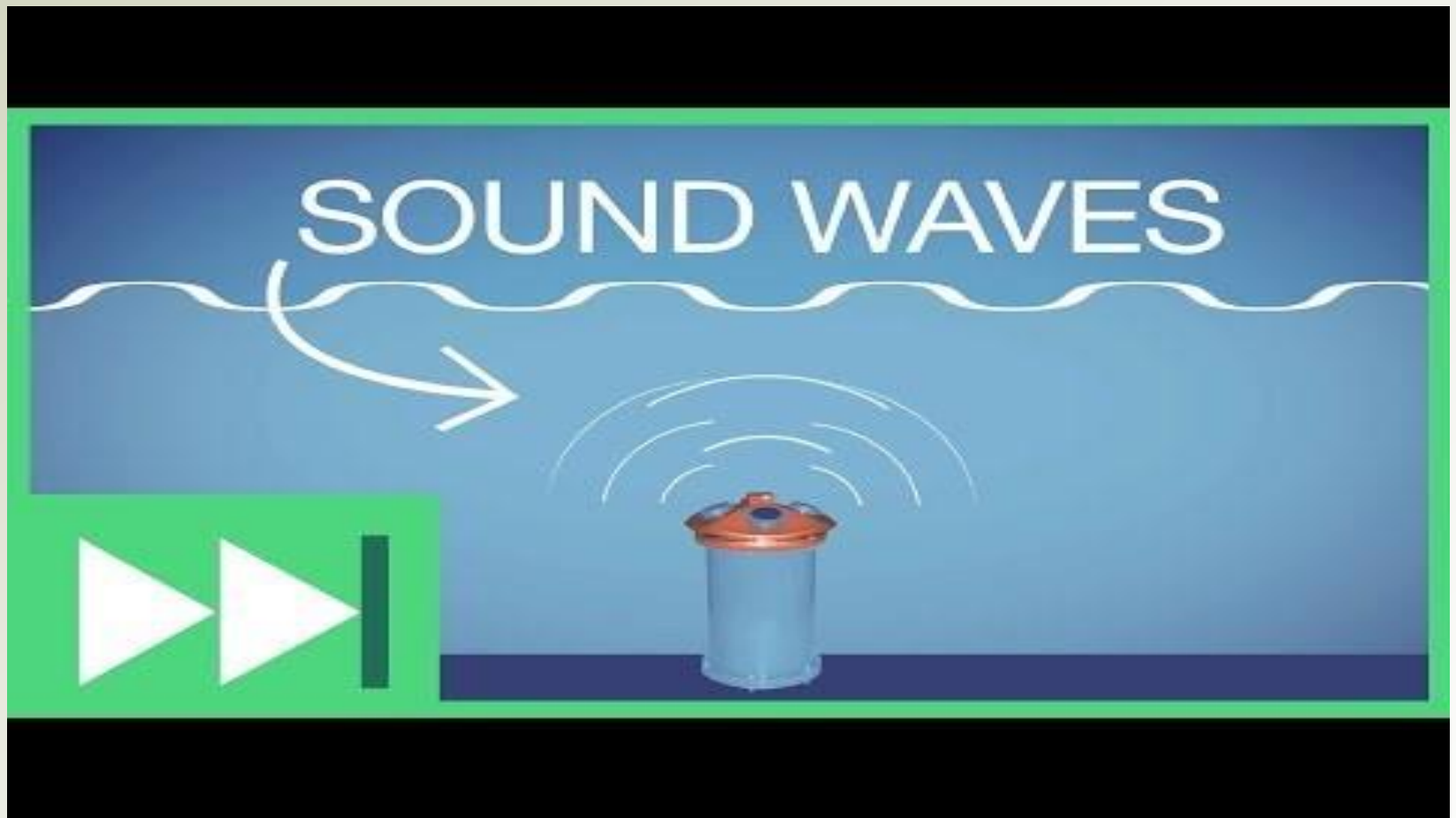


Figure 8. The proposed beach (onshore) sample locations. The numbers detailed correspond to the sample numbers detailed in Table 6.

USGS Sentinel V20



USGS Sentinel V20



Timeline

8/14/2018

- USACE finishes berm
- PARTRAC deploys tracer
- USGS deploys sensors

- Interim reports following samples
- USGS, A&M, USACE, PARTRAC, and SPI data being constantly exchanged and reported on

8/15/2019

- Sediment sampling complete
- Final data analysis begins

12/12/2019

- USACE & USGS final report

2/1/2020

- SPI final report

7/30/2021

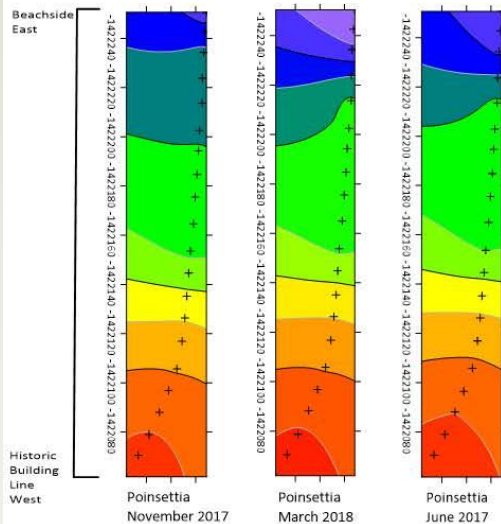
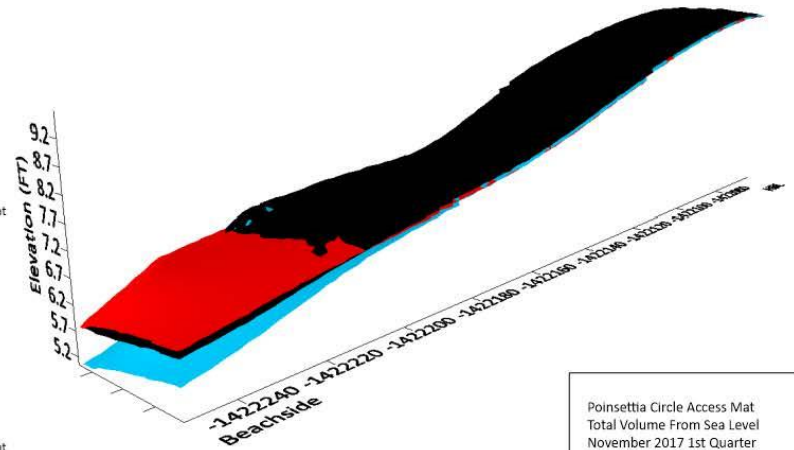
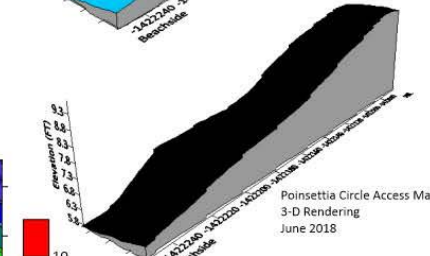
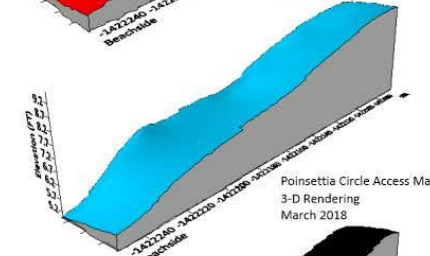
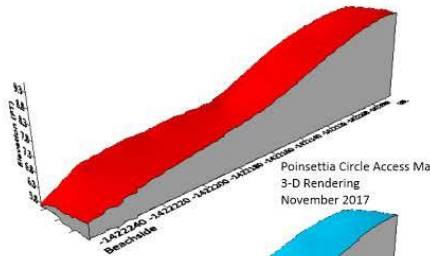
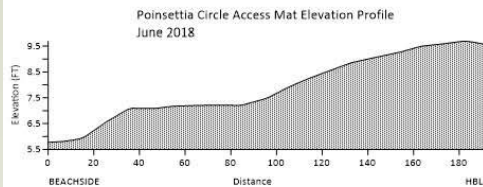
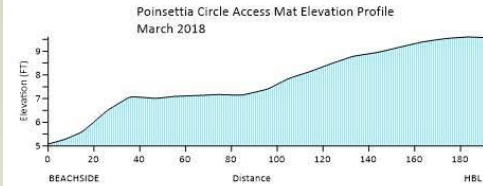
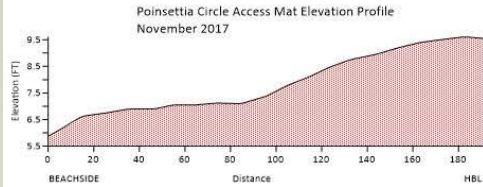
- Joint Scientific Publication

Sampling Timeline

Date	Task
8/13/18	Pre-sampling survey, offshore and onshore
8/14/18	Tracer deployment
8/15/18	Offshore sampling campaign 1
8/16/18	Onshore sampling campaign 1
8/17/18	Offshore sampling campaign 2
8/18/18	Onshore sampling campaign 2
8/19/18	Offshore sampling campaign 3
8/20/18	Onshore sampling campaign 3
8/21/18	Offshore sampling campaign 4
8/22/18	Onshore sampling campaign 4

Access Mat Mapping

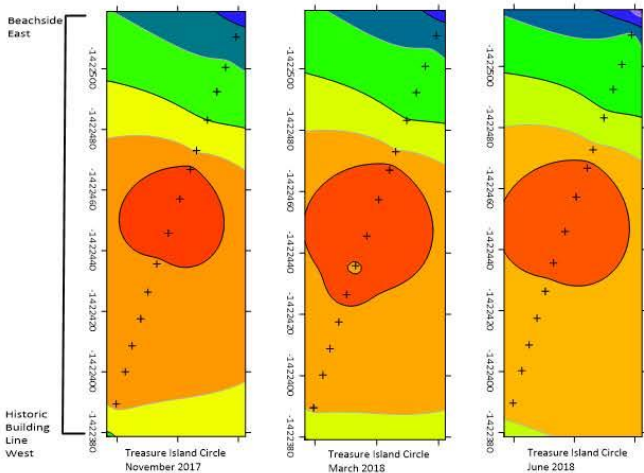
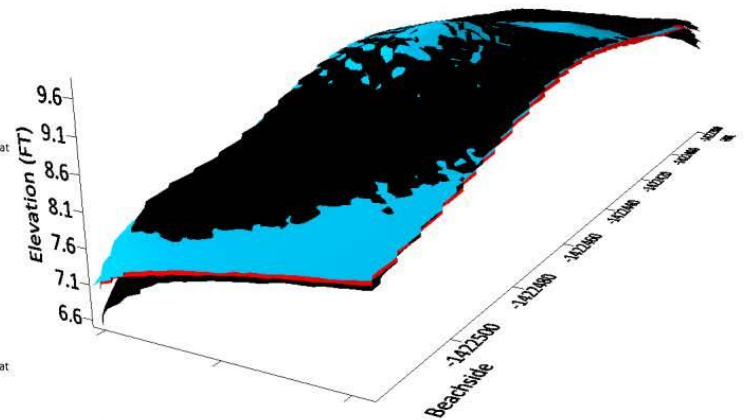
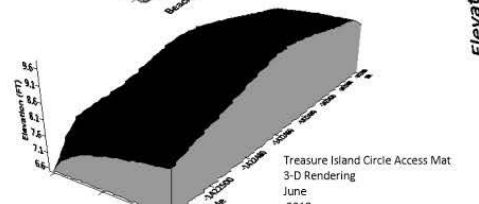
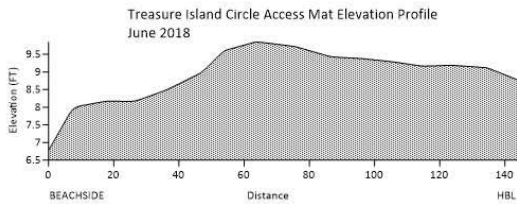
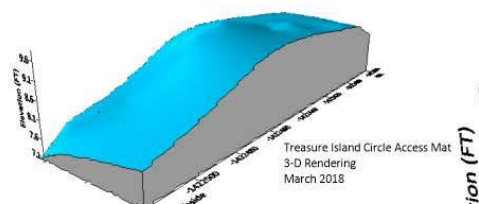
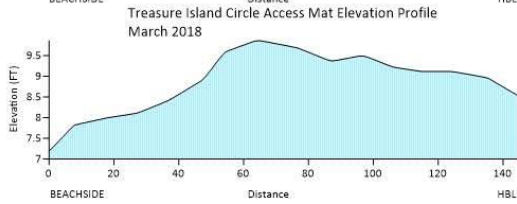
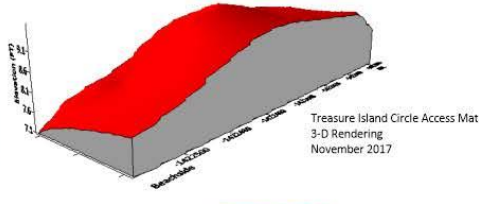
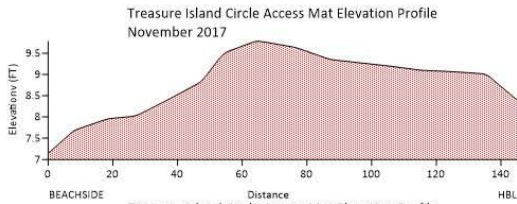
Poinsettia Circle Beach Access Mat Evaluation 7/2018



Poinsettia Circle Access Mat Total Volume From Sea Level November 2017 1st Quarter 48,032.26 Cubic Feet
Poinsettia Circle Access Mat Total Volume From Sea Level March 2018 2nd Quarter 46,846.54 Cubic Feet
Poinsettia Circle Access Mat Total Volume From Sea Level June 2018 3rd Quarter 48,630.08 Cubic Feet
Poinsettia Circle Access Mat FIRST/SECOND Quarter Comparison -1,185.72 Cubic Feet
Poinsettia Circle Access Mat SECOND/THIRD Quarter Comparison 1,783.54 Cubic Feet
Poinsettia Circle Access Mat Current Net Volume 597.82 Cubic Feet

Access Mat Mapping

Treasure Island Circle Beach Access Mat Evaluation 7/2018

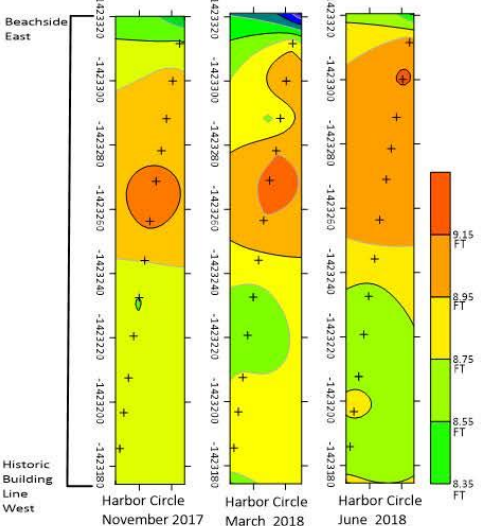
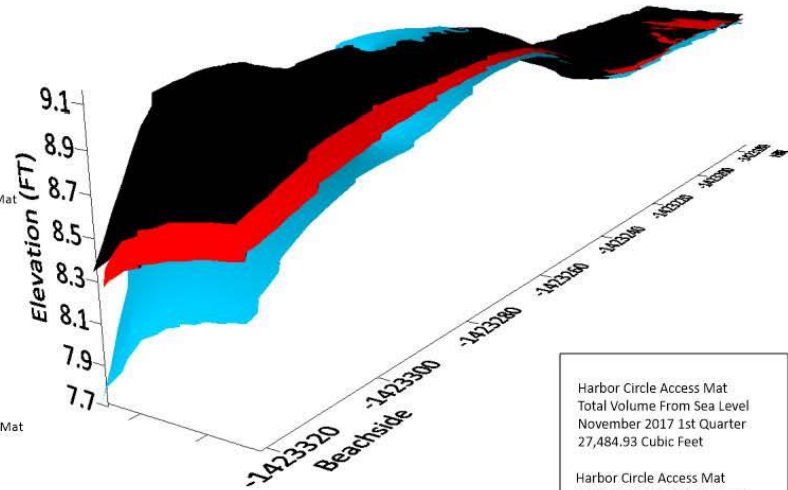
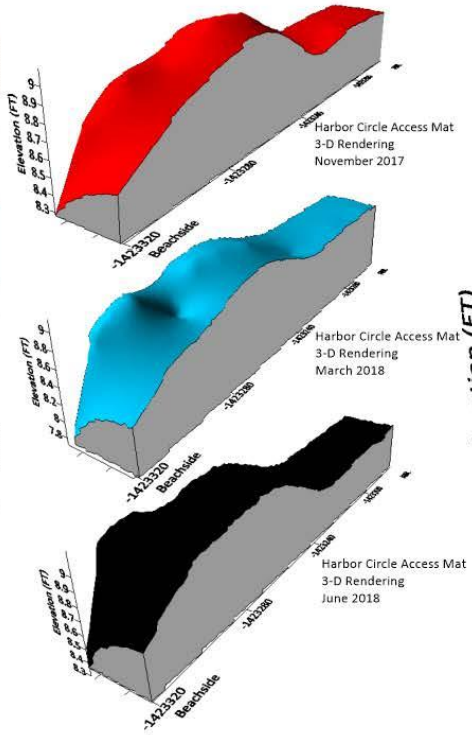
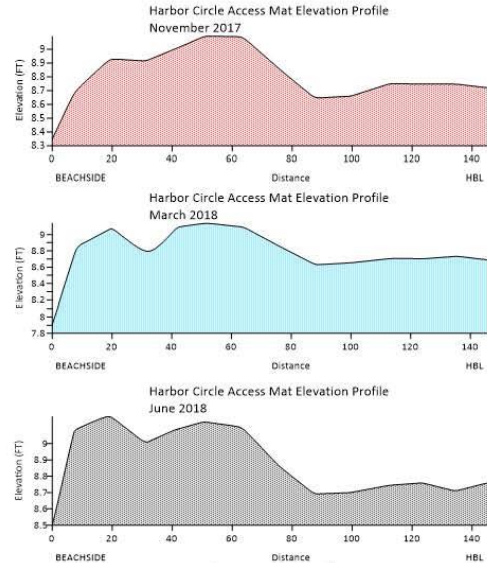


Treasure Island Circle Access Mat Total Volume From Sea Level November 2017 56,910.58 Cubic Feet	Treasure Island Circle Access Mat Total Volume From Sea Level March 2018 56,760.47 Cubic Feet	Treasure Island Circle Access Mat Total Volume From Sea Level June 2018 57,402.73 Cubic Feet
Treasure Island Circle Access Mat FIRST /SECOND Quarter Comparison -150.11 Cubic Feet	Treasure Island Circle Access Mat SECOND/THIRD Quarter Comparison 642.26 Cubic Feet	Treasure Island Circle Access Mat Current Net Volume 492.15 Cubic Feet



Access Mat Mapping

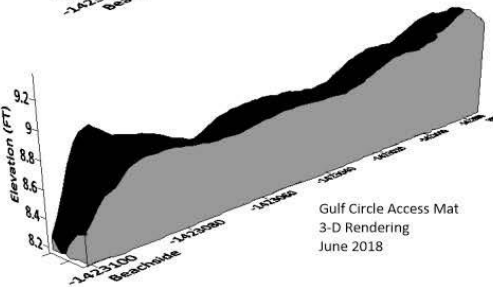
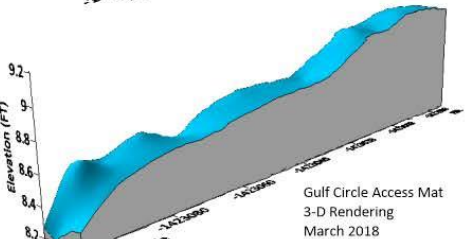
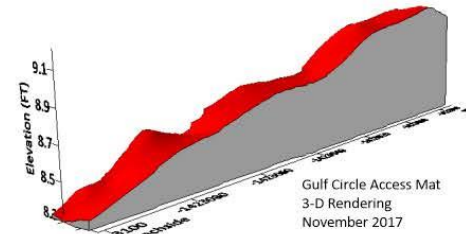
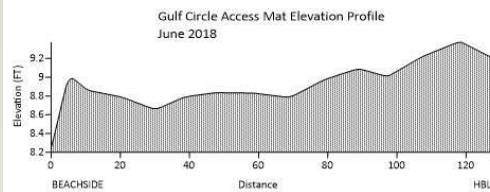
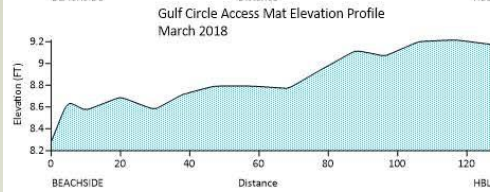
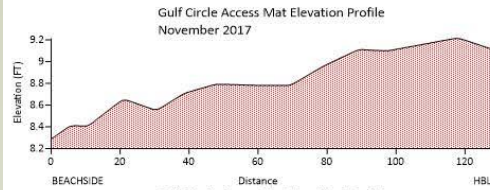
Harbor Circle Beach Access Mat Evaluation 7/2018



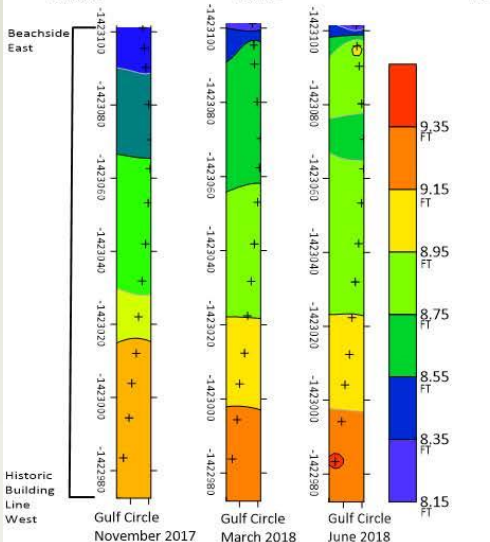
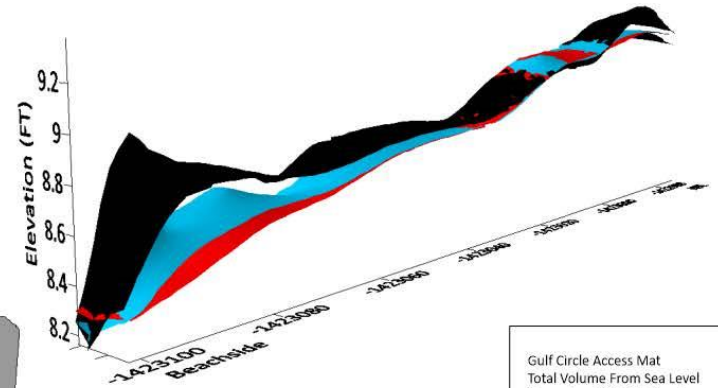
Harbor Circle Access Mat Total Volume From Sea Level November 2017 1st Quarter 27,484.93 Cubic Feet
Harbor Circle Access Mat Total Volume From Sea Level March 2018 2nd Quarter 28,935.86 Cubic Feet
Harbor Circle Access Mat Total Volume From Sea Level June 2018 3rd Quarter 27,421.81 Cubic Feet
Harbor Circle Access Mat FIRST /SECOND Quarter Comparison 1,450.93 Cubic Feet
Harbor Circle Access Mat SECOND/THIRD Quarter Comparison -1,514.05 Cubic Feet
Harbor Circle Access Mat Current Net Volume -63.12 Cubic Feet



Access Mat Mapping



Gulf Circle Beach Access Mat Evaluation 7/2018

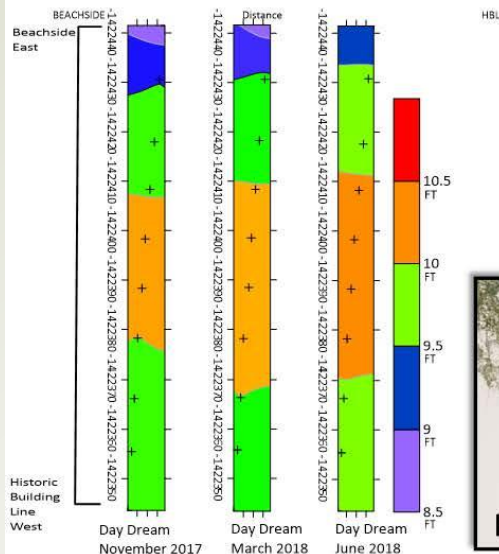
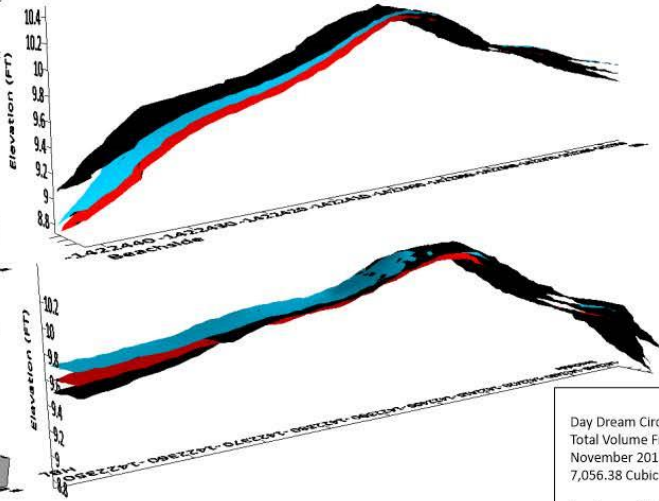
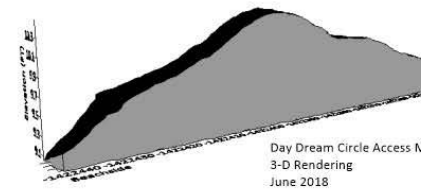
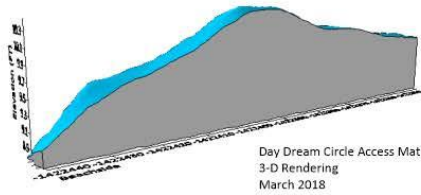
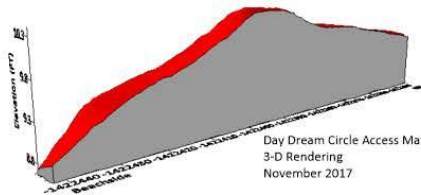
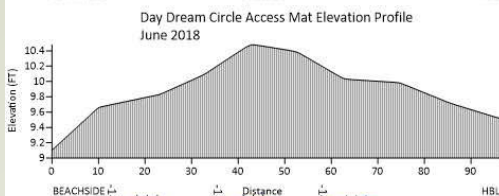
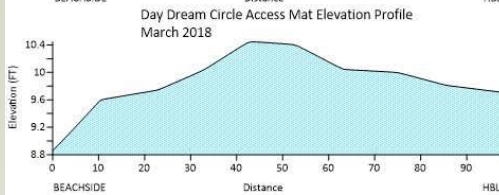
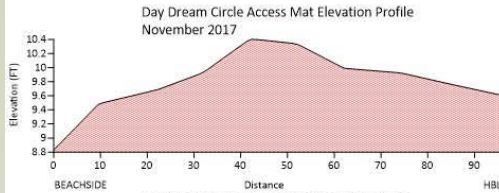


- Gulf Circle Access Mat
Total Volume From Sea Level
November 2017 1st Quarter
10,676.69 Cubic Feet
- Gulf Circle Access Mat
Total Volume From Sea Level
March 2018 2nd Quarter
10,685.36 Cubic Feet
- Gulf Circle Access Mat
Total Volume From Sea Level
June 2018 3rd Quarter
10,850.22 Cubic Feet
- Gulf Circle Access Mat
FIRST /SECOND Quarter
Comparison
8.67 Cubic Feet
- Gulf Circle Access Mat
SECOND/THIRD Quarter
Comparison
164.86 Cubic Feet

**Gulf Circle Access Mat
Current Net Volume
173.53 Cubic Feet**

Access Mat Mapping

Day Dream Circle Beach Access Mat Evaluation 7/2018

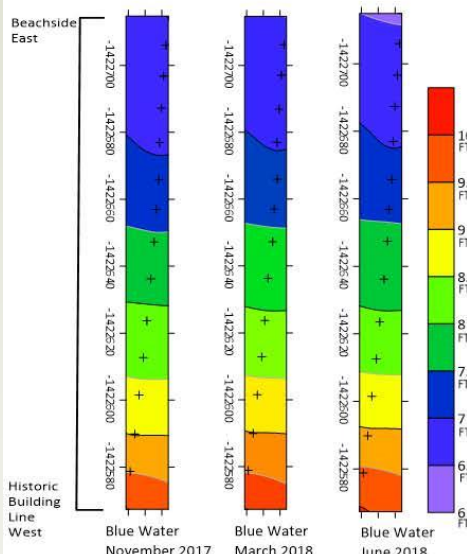
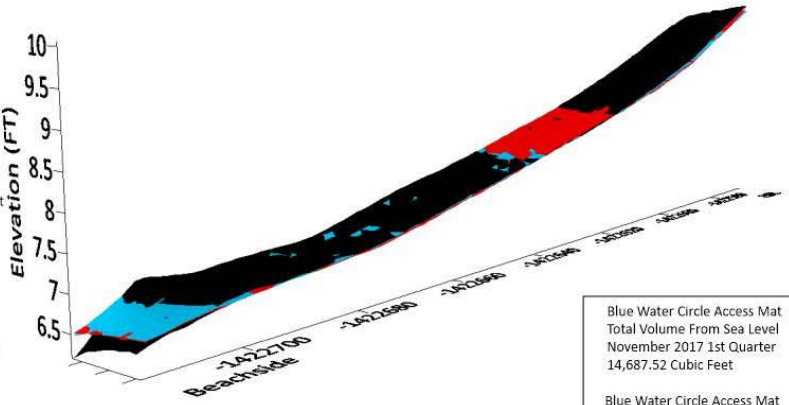
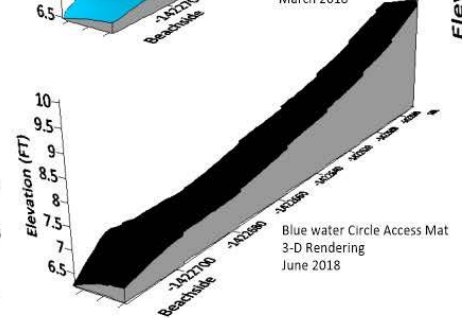
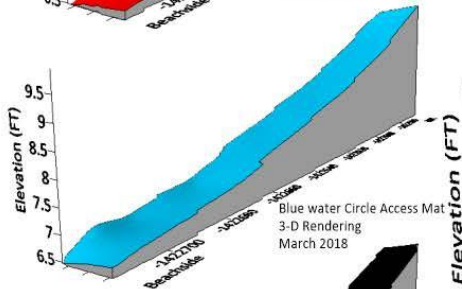
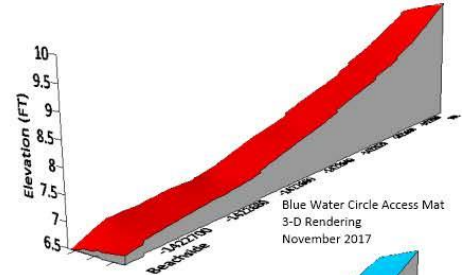
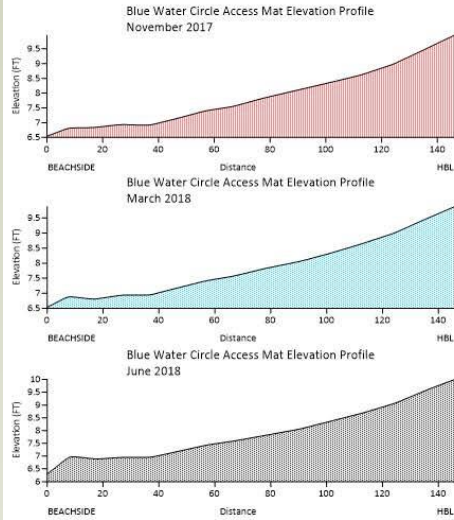


- Day Dream Circle Access Mat
Total Volume From Sea Level
November 2017 1st Quarter
7,056.38 Cubic Feet
- Day Dream Circle Access Mat
Total Volume From Sea Level
March 2018 2nd Quarter
7,240.31 Cubic Feet
- Day Dream Circle Access Mat
Total Volume From Sea Level
June 2018 3rd Quarter
7,050.08 Cubic Feet
- Day Dream Circle Access Mat
FIRST /SECOND Quarter
Comparison
183.92 Cubic Feet
- Day Dream Circle Access Mat
SECOND/THIRD Quarter
Comparison
-190.23 Cubic Feet

**Day Dream Circle Access Mat
Current Net Volume
-6.3 Cubic Feet**

Access Mat Mapping

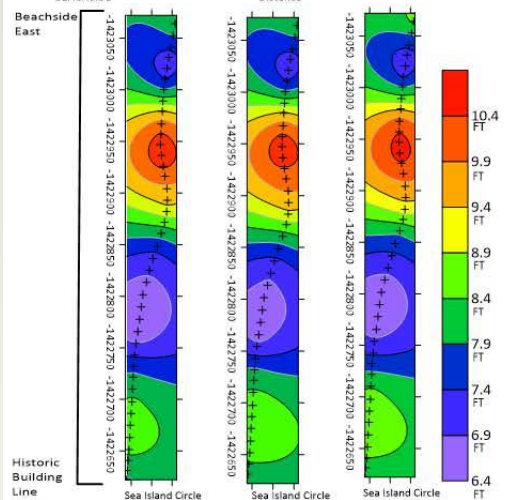
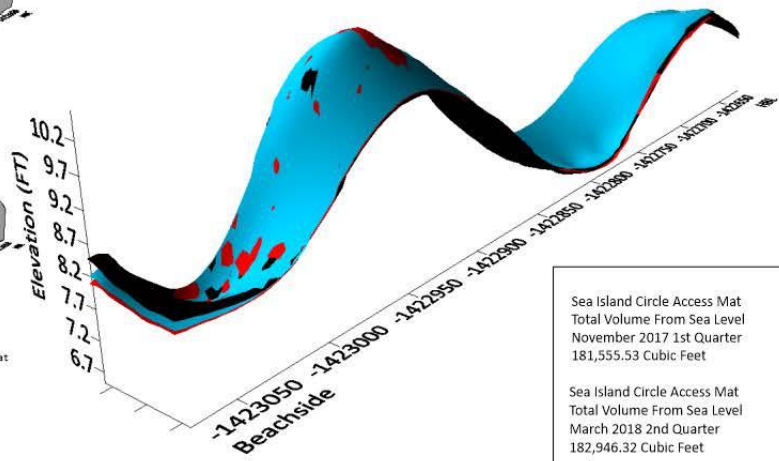
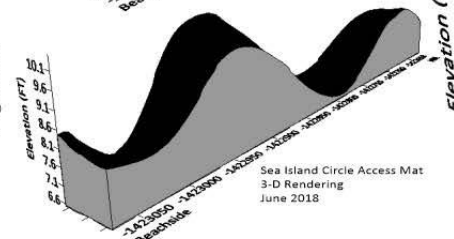
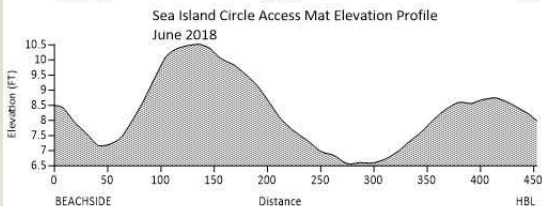
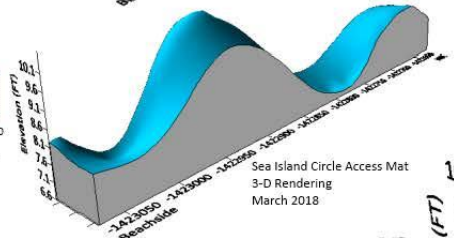
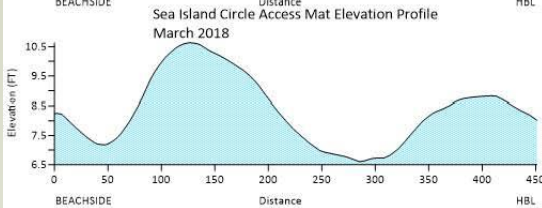
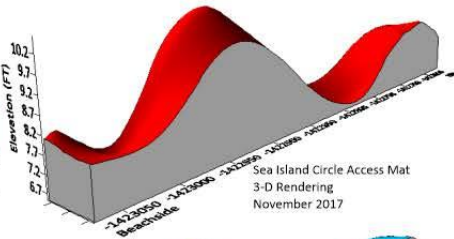
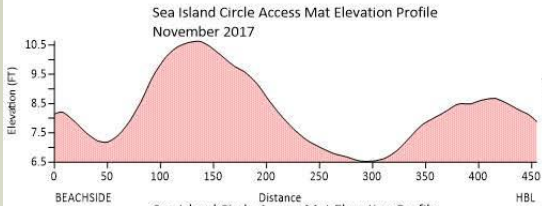
Blue Water Circle Beach Access Mat Evaluation 7/2018



Blue Water Circle Access Mat Total Volume From Sea Level November 2017 1st Quarter 14,687.52 Cubic Feet
Blue Water Circle Access Mat Total Volume From Sea Level March 2018 2nd Quarter 14,569.52 Cubic Feet
Blue Water Circle Access Mat Total Volume From Sea Level June 2018 3rd Quarter 14,628.78 Cubic Feet
Blue Water Circle Access Mat FIRST /SECOND Quarter Comparison -118 Cubic Feet
Blue Water Circle Access Mat SECOND/THIRD Quarter Comparison 59.26 Cubic Feet
Blue Water Circle Access Mat Current Net Volume -58.74 Cubic Feet

Access Mat Mapping

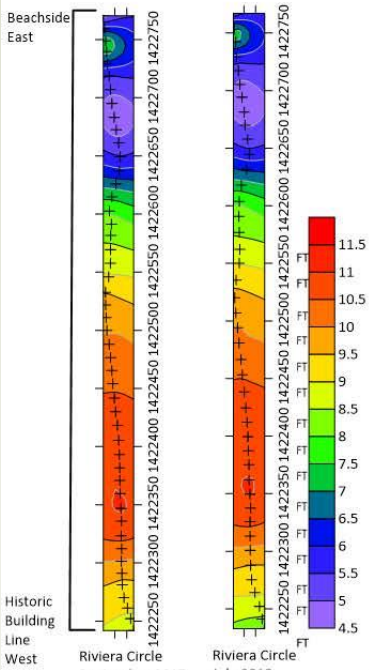
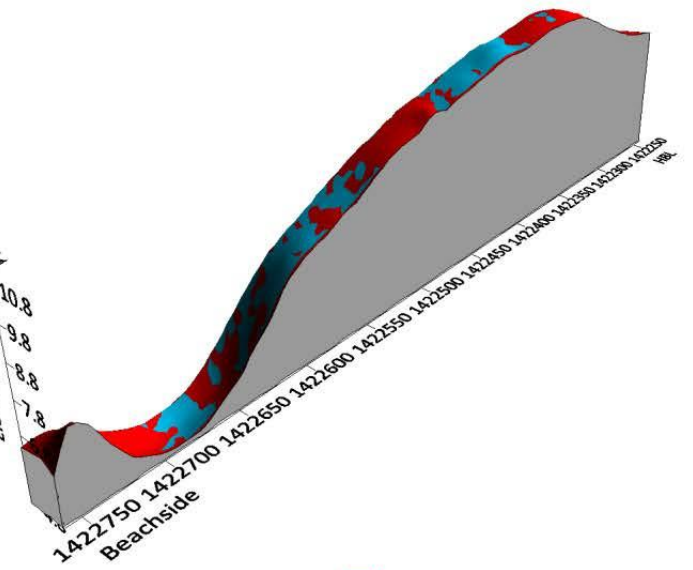
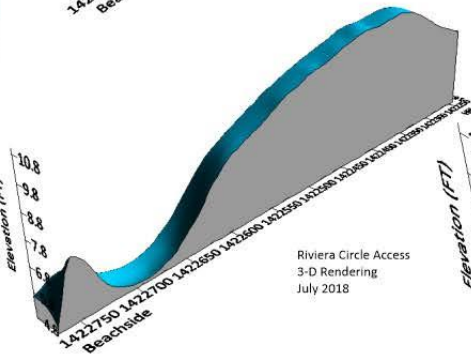
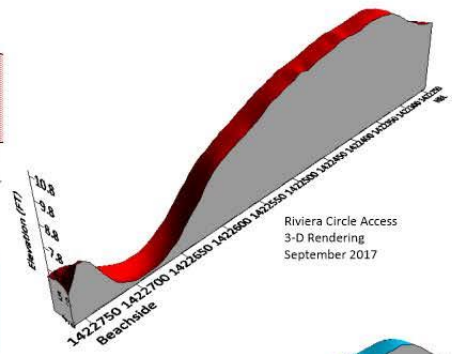
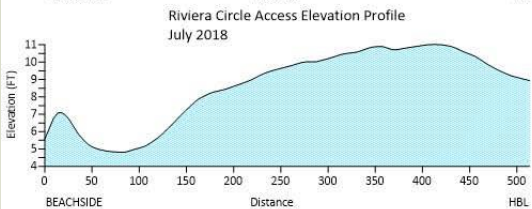
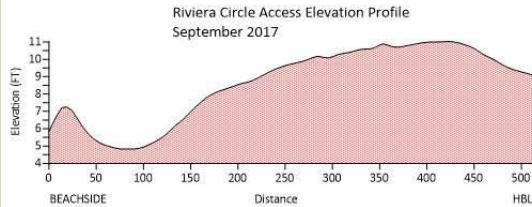
Sea Island Circle Beach Access Mat Evaluation 7/2018



Sea Island Circle Access Mat Total Volume From Sea Level November 2017 1st Quarter 181,555.53 Cubic Feet
Sea Island Circle Access Mat Total Volume From Sea Level March 2018 2nd Quarter 182,946.32 Cubic Feet
Sea Island Circle Access Mat Total Volume From Sea Level June 2018 3rd Quarter 181,421.63 Cubic Feet
Sea Island Circle Access Mat FIRST /SECOND Quarter Comparison 1,390.79 Cubic Feet
Sea Island Access Mat SECOND/THIRD Quarter Comparison -1524.69 Cubic Feet
Sea Island Circle Access Mat Current Net Volume -133.9 Cubic Feet

Access Mat Mapping

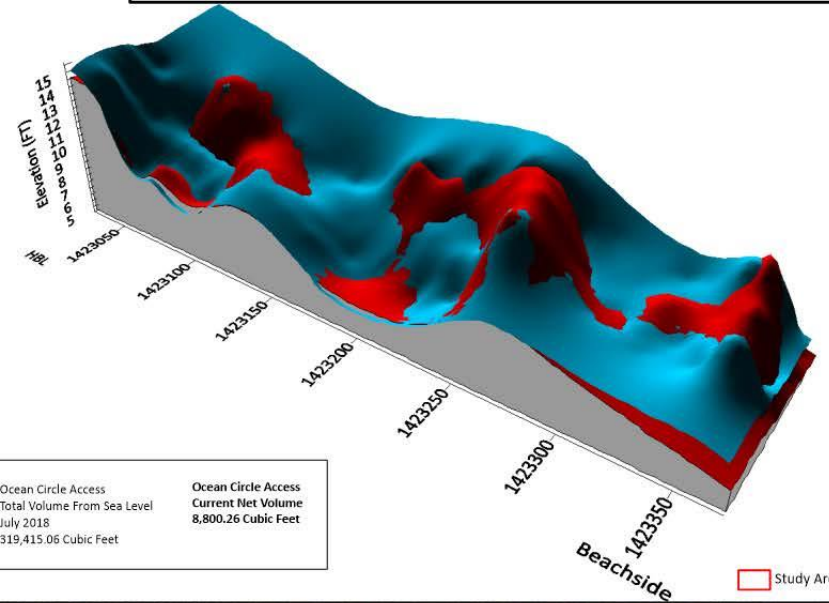
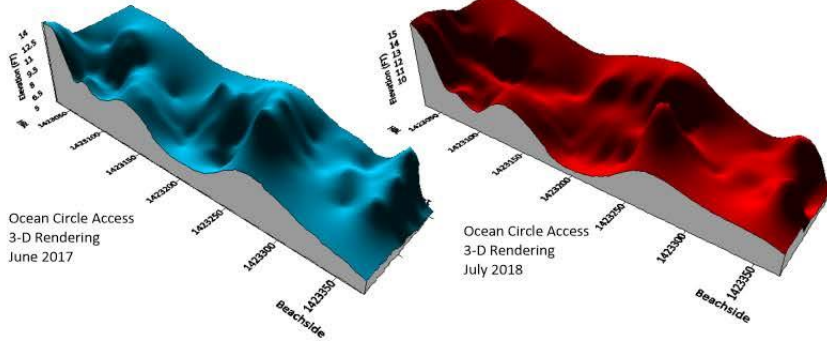
Riviera Circle Beach Access Evaluation 7/2018



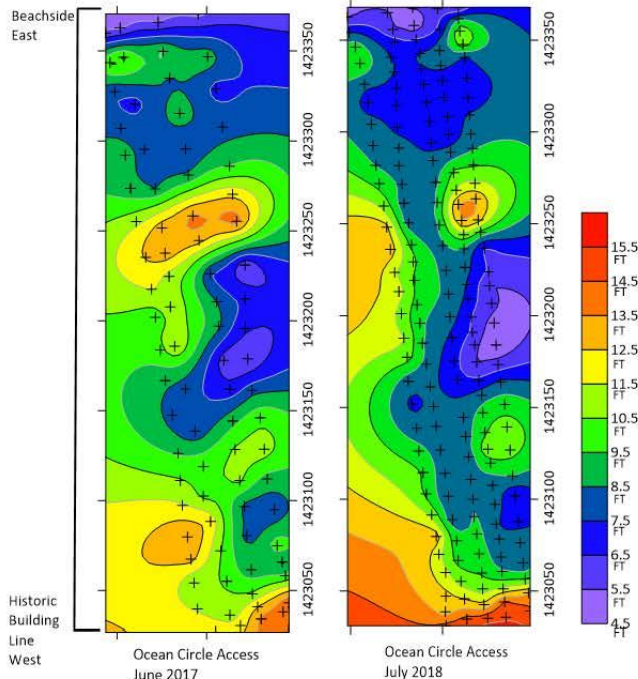
Riviera Circle Access	
Total Volume From Sea Level September 2017	111,702.60 Cubic Feet
Riviera Circle Access	
Total Volume From Sea Level July 2018	109,291.48 Cubic Feet
Riviera Circle Access	
Current Net Volume	-2,411.12 Cubic Feet

Access Mat Mapping

Ocean Circle Beach Access Pre and Post construction Evaluation 7/2018



Ocean Circle Access Total Volume From Sea Level June 2017	Ocean Circle Access Total Volume From Sea Level July 2018	Ocean Circle Access Current Net Volume July 2018
310,614.80 Cubic Feet	319,415.06 Cubic Feet	8,800.26 Cubic Feet



Access Mat Mapping

Name	Access Type	Net Volume over \approx 9 Months (Cubic Feet)
Harbor Circle	Access Mat	-63.12
Gulf Circle	Access Mat	173.53
Sea Island Circle	Access Mat	-133.90
Blue Water Circle	Access Mat	-58.74
Treasure Island Circle	Access Mat	492.15
Day Dream Circle	Access Mat	-6.30
Poinsettia Circle	Access Mat	597.82
Riviera Circle	No Improvement	-2,411.12
Ocean Circle	Walkover	8,800.26

“Blue Text” indicates the accesses used as control

*Shoreline Staff feels that no broad conclusions should be drawn until at least two years of data have been collected

Thank you



South
Padre
ISLAND