

South Padre Island Fire Department

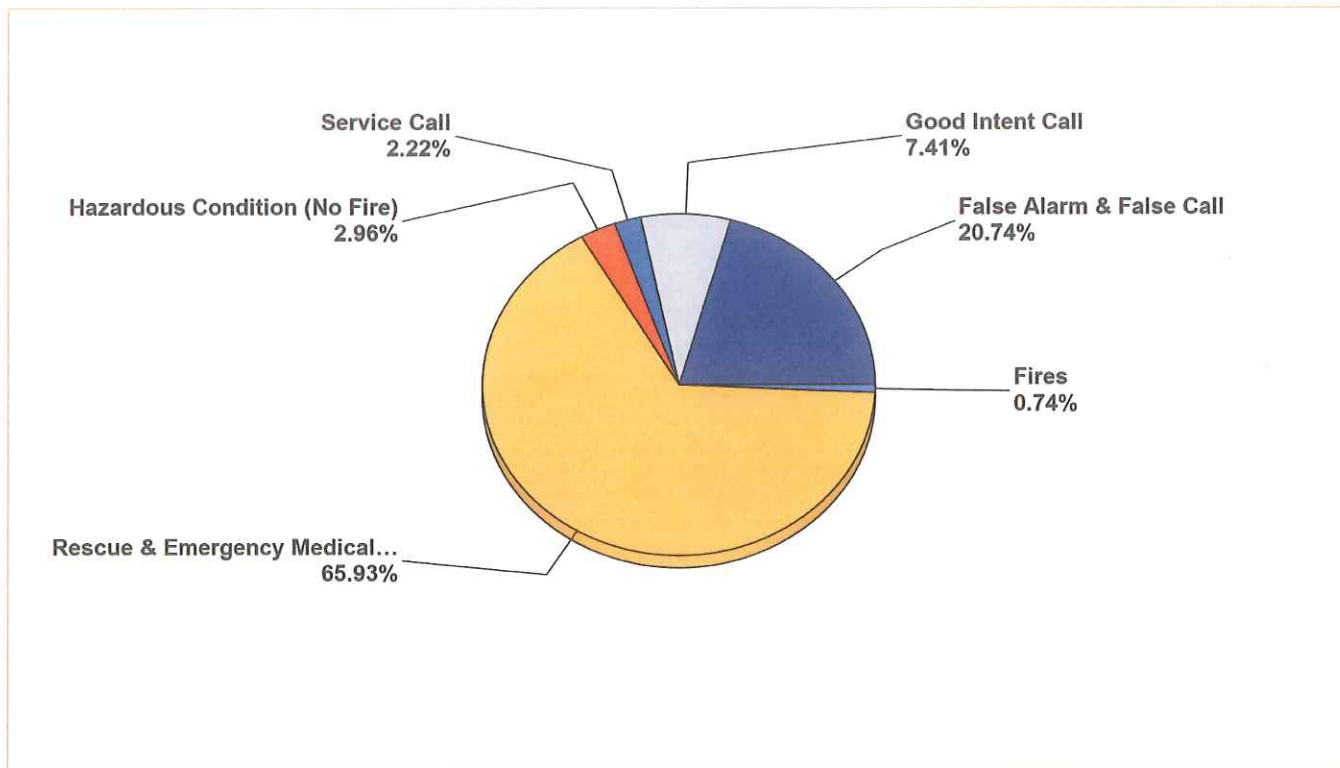
South Padre Island, TX

This report was generated on 7/14/2014 2:29:12 PM



Breakdown by Major Incident Types for Date Range

Start Date: 02/01/2014 | End Date: 02/28/2014



MAJOR INCIDENT TYPE	# INCIDENTS	% of TOTAL
Fires	1	0.74%
Rescue & Emergency Medical Service	89	65.93%
Hazardous Condition (No Fire)	4	2.96%
Service Call	3	2.22%
Good Intent Call	10	7.41%
False Alarm & False Call	28	20.74%
TOTAL	135	100.00%

Only REVIEWED incidents included. Summary results for a major incident type are not displayed if the count is zero.

Detailed Breakdown by Incident Type

INCIDENT TYPE	# INCIDENTS	% of TOTAL
154 - Dumpster or other outside trash receptacle fire	1	0.74%
300 - Rescue, EMS incident, other	6	4.44%
311 - Medical assist, assist EMS crew	16	11.85%
320 - Emergency medical service, other	43	31.85%
321 - EMS call, excluding vehicle accident with injury	23	17.04%
324 - Motor vehicle accident with no injuries.	1	0.74%
411 - Gasoline or other flammable liquid spill	1	0.74%
413 - Oil or other combustible liquid spill	1	0.74%
444 - Power line down	1	0.74%
445 - Arcing, shorted electrical equipment	1	0.74%
511 - Lock-out	1	0.74%
531 - Smoke or odor removal	1	0.74%
554 - Assist invalid	1	0.74%
600 - Good intent call, other	6	4.44%
611 - Dispatched & cancelled en route	3	2.22%
622 - No incident found on arrival at dispatch address	1	0.74%
700 - False alarm or false call, other	6	4.44%
710 - Malicious, mischievous false call, other	1	0.74%
714 - Central station, malicious false alarm	1	0.74%
730 - System malfunction, other	7	5.19%
732 - Extinguishing system activation due to malfunction	1	0.74%
733 - Smoke detector activation due to malfunction	1	0.74%
735 - Alarm system sounded due to malfunction	3	2.22%
740 - Unintentional transmission of alarm, other	2	1.48%
743 - Smoke detector activation, no fire - unintentional	5	3.70%
745 - Alarm system activation, no fire - unintentional	1	0.74%
TOTAL INCIDENTS:	135	100.00%

Only REVIEWED incidents included. Summary results for a major incident type are not displayed if the count is zero.

South Padre Island Fire Department

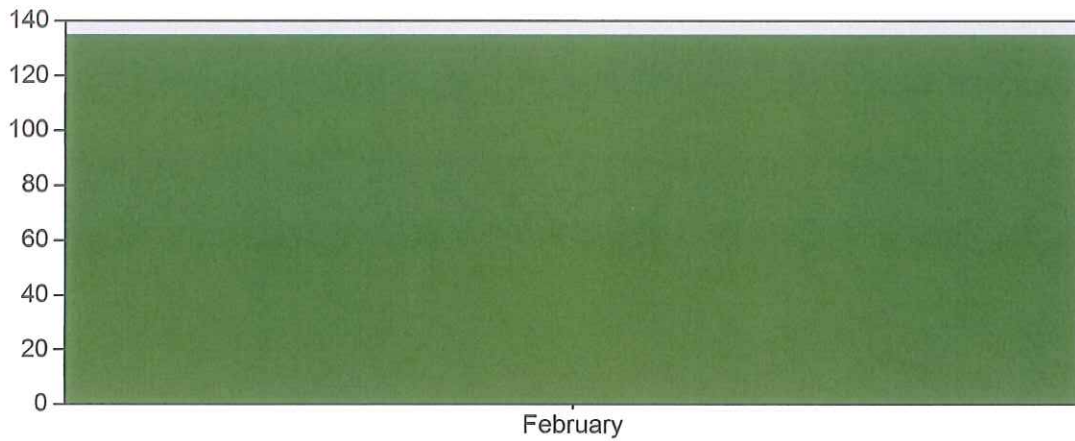
South Padre Island, TX

This report was generated on 7/14/2014 2:36:10 PM



Incidents by Month for Month Range

StartMonth: 2 | EndMonth: 2 | Year: 2014



MONTH	INCIDENTS
February	135

Only REVIEWED incidents included

South Padre Island Fire Department

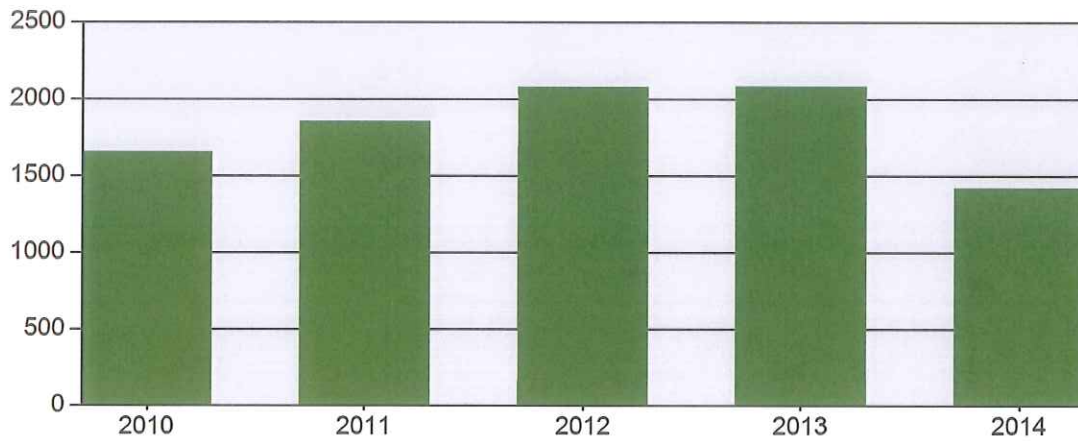
South Padre Island, TX

This report was generated on 7/14/2014 3:22:09 PM



Incidents by Year for Year Range

StartYear: 2010 | EndYear: 2014



YEAR	COUNT
2010	1658
2011	1858
2012	2080
2013	2084
2014	1424

Only REVIEWED incidents included

South Padre Island Fire Department

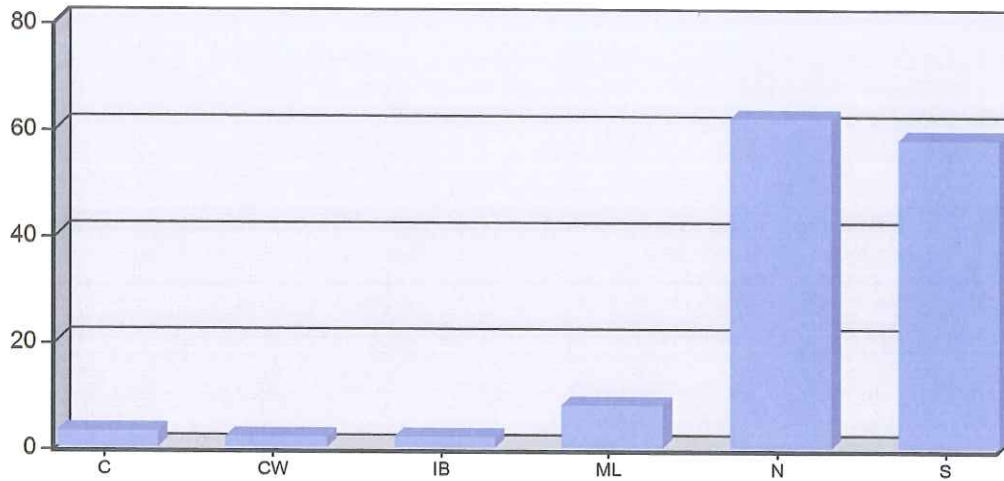
South Padre Island, TX

This report was generated on 7/14/2014 3:27:26 PM



Incident Count by Shift per Zone for Date Range

Start Date: 02/01/2014 | End Date: 02/28/2014



ZONE	# INCIDENTS
C - County	
B Shift	2
C Shift	1
Total for C - County:	3

CW - Causeway	
C Shift	2
Total for CW - Causeway:	2

IB - Isla Blanca	
A Shift	1
C Shift	1
Total for IB - Isla Blanca:	2

Count of incidents by shift per zone for a given date range. Includes a chart.

ML - Mainland	
A Shift	1
B Shift	3
C Shift	4
Total for ML - Mainland:	8

N - North (Town)	
A Shift	11
B Shift	26
C Shift	25
Total for N - North (Town):	62

S - South (Town)	
A Shift	18
B Shift	18
C Shift	22
Total for S - South (Town):	58

TOTAL INCIDENTS: 135

Count of incidents by shift per zone for a given date range. Includes a chart.

South Padre Island Fire Department

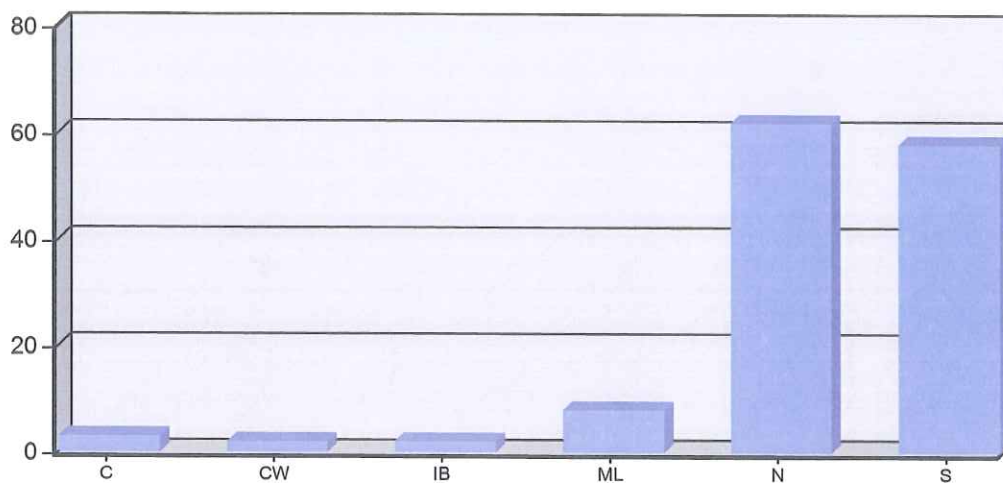
South Padre Island, TX

This report was generated on 7/14/2014 3:38:44 PM



Incident Count per Zone for Date Range

Start Date: 02/01/2014 | End Date: 02/28/2014



ZONE	# INCIDENTS
C - County	3
CW - Causeway	2
IB - Isla Blanca	2
ML - Mainland	8
N - North (Town)	62
S - South (Town)	58
TOTAL:	135

Zone information is defined on the Basic Info 3 screen of an incident. Only REVIEWED incidents included.

South Padre Island Fire Department

South Padre Island, TX

This report was generated on 7/14/2014 3:49:21 PM



Incident Count for Zone for Date Range

Zone: All Zones | Start Date: 02/01/2014 | End Date: 02/28/2014

ZONE	NUMBER OF CALLS
C - County	3
CW - Causeway	2
IB - Isla Blanca	2
ML - Mainland	8
N - North (Town)	62
S - South (Town)	58
TOTAL:	135

Zone information is defined on the Basic Info 3 screen of an incident. This report counts each exposure. Only REVIEWED incidents included.