

<b>Animal Control Stats</b>	<b>August 2012</b>	<b>August 2011</b>	<b>July 2012</b>
Animal Bite / Scratch	1	0	2
Animal Cruelty Concern	1	0	5
Animal Removed from Vehicle, Garage or Other Property	11	0	0
Animals Placed in Quarantine	1	0	1
Animals Released to Wild	10	13	6
ANIMALS RELEASED TO PIAS/FRIEND OF THE ANIMAL/SEALIFE CENTER	19	3	11
Barking Dog Complaint	2	0	0
Barking Dog Violation (Citation Issued)	0	0	0
Beached/Dead Animal (Signal 0)	21	7	14
Bees	4	1	2
Cat on Causeway	0	0	0
Cat or Dog Returned to Owner	3	3	0
Clean up after pets	0	2	0
Follow up on Animal Bites / Scratch	7	2	3
Follow up on Barking Dogs	0	0	0
Follow up on Barking Dogs Complaint	1	0	0
Follow up on Bees	0	0	3
Follow up on Cleaning up after pets	0	0	0
Follow up on Loose Canines or Cats	1	8	1
Follow up on Loose Dog or Cat Complaint	3	0	2
Follow up on Lost Pet	2	1	1
Follow up on Owner to Vaccinate Pet	1	0	7
Follow up on Quarantine Case	6	5	0
Follow up on Welfare Concern	2	0	1
Impoundment by Health Officer	0	0	0
Injured Animal	2	5	5
Loose Canines Or Cats	27	24	25
Loose Horses	0	0	30
Lost Dog / Cat	3	2	4
Monitor Trap Set by Code	1	0	0
Owners to Vaccinate Dogs	0	1	4
Patrol for Owners not cleaning up after pets	86	70	79
Rabies Specimen Prepared and Submitted	0	0	0
Scan Animal for Microchip	2	0	0
Snake Concern	1	2	1
Training for Animal Control Equipment	3	0	0
Traps Issued or Returned	8	7	4
Trap Maintenance	0	0	0
Traps Set Up by Code Enforcement	1	0	0
Unlawful Restraint of Dog	2	0	1
Welfare Concern	17	3	3
Wildlife Investigation	0	0	1
<b>TOTALS</b>	<b>0</b>	<b>0</b>	<b>216</b>

## TIP OF THE MONTH:

### *West Nile Virus and Dogs and Cats*

- Can West Nile virus (WNV) cause illness in dogs or cats?

A relatively small number of WNV infected dogs and WNV infected cats have been reported to CDC .

Experimentally infected dogs\* showed no symptoms after infection with WNV. Some infected cats exhibited mild, nonspecific symptoms during the first week after infection--for the most part only showing a slight fever and slight lethargy.

- How can my veterinarian treat my cat or dog if they are/may be infected with WNV?

There is no specific treatment for WNV infection. Full recovery from the infection is likely. Treatment would be supportive (managing symptoms, if present) and consistent with standard veterinary practices for animals infected with a viral agent.

- How do cats and dogs become infected with West Nile virus?

Dogs and cats become infected when bitten by an infected mosquito.

There is also evidence that cats can become infected with the virus after eating experimentally infected mice.

- Is there a vaccine for cats or dogs?

No.

- Can I use insect repellent on my pets?

DEET-based repellents, which are recommended for humans, are not approved for veterinary use (largely because animals tend to ingest them by licking.) Talk with your veterinarian for advice about the appropriate product for use on your pet.

This information, along with much more helpful information, is located on the Center for Disease Control and Prevention's website.

[www.cdc.gov](http://www.cdc.gov)



# City of South Padre Island

## Code Enforcement Stats

### August 2012

	Aug-12	Aug-11	Jul-12
<b>Beach Patrol Section C TIME'S X HOURS/ MIN.</b>	<b>13 x 19.5 hrs</b>	<b>19 x 11.5 hrs</b>	<b>40 x 57 hrs</b>
<b>BFI Bundle/Brush Locations (Sec. 9-17)</b>	16	4	19
<b>Camping (Sec. 12-3)</b>	1	0	3
<b>Concern citizens/Ordinance Info. (Code 5)</b>	290	313	274
<b>Containers Required (Sec 9-13)</b>	3	0	2
<b>Debris/Misc. on Roadway Removed</b>	41	56	101
<b>Effluent Discharge (Sec. 10-1)</b>	2	2	4
<b>Enclosures Proper/Screened (Sec. 9-13(B)(5))</b>	0	5	21
<b>Glass on Beach (Sec. 12-7)</b>	0	3	28
<b>Graffiti (Sec 12-21)</b>	1	0	0
<b>Hotel Inspection (341.066)</b>	1	1	1
<b>Littering Prohibited (Sec. 9-3)</b>	4	11	102
<b>Lost Person on Beach</b>	2	0	4
<b>Maintenance of Signs (Sec. 15-11(B,C)) (15-2)</b>	1	2	0
<b>Noises--Loud, disturbing, etc. prohibited (Sec.12-2)</b>	0	3	0
<b>Overfilled Dumpsters (9-12a)</b>	3	3	7
<b>Overgrown weeds on commercial property (Sec. 4-56)</b>	0	3	0
<b>Owners to maintain clean premises (Sec.9-12)</b>	13	51	19
<b>Patrol by (Code 11)</b>	3	10	0
<b>Permit Req. on Signs (Sec. 15-3)</b>	12	8	9
<b>Plastic Bag Workshop Information</b>	0	0	0
<b>Prohibited Banner/Sign (Sec. 15-5)</b>	5	4	7
<b>Recreational Vehicles/Mobile Equipment (Sec 20-11)</b>	0	2	2
<b>Regulation of Shade Devices and Chairs on the Public Beach (13-24)</b>	9	0	5
<b>Sign Standards (Sec. 15-7)</b>	1	2	1
<b>Stagnant Water (Sec.9-4)</b>	0	0	0
<b>Weedy Lots (Sec. 9-6)</b>	46	16	54
<b>Weedy Lots Letters (Sec. 9-8)</b>	51	0	0
<b>Follow up on Banners/Signs/Required Signs</b>	17	14	18
<b>Follow up on brush and debris</b>	16	5	4
<b>Follow up on Custom Garment</b>	0	0	0
<b>Follow up on Containers Required (9-13A)</b>	0	0	3
<b>Follow up on damage dumpster (Sec 9-13B)</b>	0	3	0
<b>Follow up on Effluent Discharge/Stagnant</b>	1	2	4
<b>Follow up on Enclosures</b>	1	2	23
<b>Follow up on littering (sec 9-3)</b>	4	9	6
<b>Follow up on Noise (Sec. 12-2)</b>	0	5	0
<b>Follow up on Overfilled dumpsters</b>	1	3	14
<b>Follow up on property cleanup</b>	6	0	18


Follow up on recreational vehicles	0	2	2
Follow up on shade device ordinances	0	0	0
Follow up on Stagnant Water	0	0	0
Follow up on trash service required (9-13)	0	3	2
Follow up on water leak	0	0	0
Follow up on Weedy Lot/Weedy Businesses	87	25	6

<b>Total for Follow-Ups</b>	<b>136</b>	<b>96</b>	<b>100</b>
-----------------------------	------------	-----------	------------

<b>CALLS FOR SERVICE</b>	<b>652</b>	<b>599</b>	<b>763</b>
--------------------------	------------	------------	------------

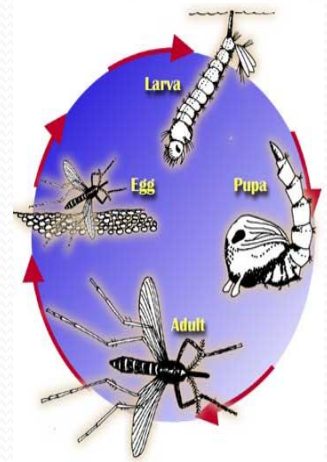
NOTICE OF COMPLY ISSUED	22	18	15
WARNINGS ISSUED	5	7	18
CITATIONS ISSUED	1	2	2

**CITY OF SOUTH PADRE ISLAND  
HEALTH DEPARTMENT STATS  
AUGUST 2012**

PERMIT #	ESTABLISHMENT	ADDRESS	PERMIT FEE	Re-Inspection/Score
5568	Subway	2100 Padre Blvd. SPI	6 mth	NO/92
5658	Blanca White's	202 W Whiting	\$100.00	NO/93
5666	La Rumba	3409 Padre Blvd	\$100.00	NO/100
5667	Gabriella's Italian Grill & Pizzeria	700 Padre Blvd.	\$100.00	NO/92
5669	WindWater Hotel & Resort	5701 Padre Blvd. SPI	\$100.00	NO/97
5677	El Rey Del Elote	7355 Padre Blvd.	\$20.00	Temp
5679	Coconuts	2301 Laguna	\$100.00	NO/100
5680	Comfort Suites	912 Padre Blvd.	\$100.00	NO/97
5681	Yummies Bistro	700 Padre Blvd. Suite K	\$100.00	NO/100
5682	Padre Rita Grill	4001 Padre Blvd.	\$100.00	NO/97
5683	Alex's Vending Food Service	7355 Padre Blvd.	\$20.00	Temp
5684	Ruby Elotes	7355 Padre Blvd.	\$20.00	Temp
5685	La Jaiba Restaurant	2001 Padre Blvd. SPI	\$100.00	NO/92
5568	Subway	2100 Padre Blvd. SPI	\$0.00	Compliance
5658	Blanca White's	202 W Whiting	\$0.00	Compliance
5667	Gabriella's Italian Grill & Pizzeria	700 Padre Blvd.	\$0.00	Compliance
5669	WindWater Hotel & Resort	5701 Padre Blvd. SPI	\$0.00	Compliance
5680	Comfort Suites	912 Padre Blvd.	\$0.00	Compliance
5682	Padre Rita Grill	4001 Padre Blvd.	\$0.00	Compliance
5685	La Jaiba Restaurant	2001 Padre Blvd. SPI	\$0.00	Compliance
	<b>6 Month Inspections</b>	<b>1</b>	<b>\$0.00</b>	
	<b>Total Compliance</b>	<b>7</b>	<b>\$0.00</b>	
	<b>Field Investigations</b>	<b>0</b>	<b>\$0.00</b>	
	<b>Farmer's Market Permits</b>	<b>0</b>	<b>\$0.00</b>	
	<b>Total Temporary Inspections</b>	<b>3</b>	<b>\$60.00</b>	
	<b>Total Establishment Permits (annual)</b>	<b>9</b>	<b>\$900.00</b>	
	<b>Total Health Inspections</b>	<b>20</b>	<b>\$500.00</b>	

# Mosquito Management Stats

## August 2012



# Represents Amount of Times Performed	August 2012	July 2012	June 2012
Altosid/BTI (larviciding)	77	72	34
Adulticide Spraying	4	12	18
Scheduled for Adulticide	60	62	52
Landing Rate Counts	26	21	5
Larval counts	0	0	0
Mosquito concerns	0	2	3
Training for Spraying	6	2	1
Work done in Chemical room	10	3	4
Mosquito Trapping	4		
Totals :	187	174	117

### Mosquito Fast Facts

#### DEFEND YOURSELF AGAINST WEST NILE

Remember the “Four D’s” for your defense against exposure to West Nile virus infected mosquitoes:

☐ **DUSK/DAWN** are the times of day you should try to stay indoors. This is when infected mosquitoes are most active.

☐ **DRESS** in long sleeves and pants when you’re outside. For extra protection, you may want to spray thin clothing with repellent.

☐ **DEET** (N,N-diethyl-m-toluamide) is an ingredient to look for in your insect repellent. Other approved repellents include picaridin, oil of lemon eucalyptus and IR3535. Follow label instructions and always wear repellent when outdoors.

☐ **DRAIN** standing water in your backyard and neighborhood - old tires, flowerpots and clogged rain gutters. These are mosquito breeding sites.

For information about West Nile virus in Texas, go to:

[www.dshs.state.tx.us/idcu/disease/arboviral/WestNile/](http://www.dshs.state.tx.us/idcu/disease/arboviral/WestNile/)

# Recycling Stats

## August 2012

### Does RECYCLING effect MOSQUITO levels?

By now many people know about the importance of recycling tires, because they free up space in landfills and are made into constructive rubber mulch. Another fact that may be more of an incentive is that recycling tires helps keep mosquitoes at bay. Yup, you read that right. The extra effort of taking tires to a responsible recycling center will make your spring and summer more pleasant, with less mosquitoes.

\*Taken from Rubbermulchblog.com

If you see any old tires lying around, please contact Environmental Health Services Department, 956-761-3226, for info on how to properly recycle old tires!

# Represents Pounds Recycled of each product	August 2012	July 2012
Cardboard	640	710
Plastic	340	630
Newspaper	115	170
Office Waste	120	325
Tin	5	45
Aluminum	15	102
Totals :	1235	1982

